

INSPIRING FUTURES START HERE

A LEVELS
DIPLOMAS
ACADEMIES



2024 CALLYWITH COLLEGE



In association with
Truro & Penwith College

**YOUR
FUTURE
STARTS
HERE**



“

**I ENJOY THE
INDEPENDENCE
I HAVE HERE
AND ALL OF MY
LECTURERS ARE
SUPPORTIVE AND
ENTHUSIASTIC.**

04

WHY CHOOSE US?

Find out about our fantastic Ofsted Outstanding college. With state-of-the-art facilities and resources, a diverse range of courses and enrichment activities, exceptional teaching and student support and a track record of student achievement, Callywith College is your stepping-stone to a bright future.

28

COURSES

All of our courses are listed by type and level. Once you've narrowed down your options here, be sure to find out more course details on our website or at one of our Open Events (see inside back page for dates).

A LEVELS 32

LEVEL 3 EXTENDED DIPLOMA & T LEVEL 58

30

WHAT TO CHOOSE

Discover all your options and view course entry requirements. With the widest choice of A Levels and vocational courses in North and East Cornwall, there's bound to be something perfect for you.

70

ACADEMIES

More of the things you love. Choose academic or sporting options as an additional pathway alongside your full-time studies.

78

THE LOW DOWN

All the other stuff you need to know including how to get to the College, how to apply and our Open Event dates. A full index can be found on page 92.

WELCOME



Dr Jon Grey
Principal
Callywith College

Callywith College opened in September 2017 when we welcomed our first cohort of students. Our students have achieved excellent results, participated in everything the College has to offer including a broad range of trips, visits and enrichment activities, and progressed onto an exciting range of destinations including the very best universities.

Callywith College, which was developed in association with Truro and Penwith College, provides a state-of-the-art learning environment. As a specialist post-16 college, we are able to offer an extensive selection of course choices and a diverse range of wider opportunities including our academies programme.

Our high quality provision was recognised by Ofsted in January 2020 when they awarded the College 'Outstanding' in all areas. Callywith College, in Ofsted Inspectors' words, "raises the aspirations and achievements and improves the life chances of young people. Students are overwhelmingly positive about all aspects of college life. They feel privileged to be a student there and take an immense pride in being part of the Callywith College community. They thrive under the exceptionally supportive and caring environment" that "inspires students to do well" whilst "constantly reminding them of their ability and worth" (Ofsted, 2020).

Callywith College provides you with the best possible learning experience, supporting you every step of the way in your progression onto Higher Education, Apprenticeships or employment. You will receive the highest quality teaching and learning in a supportive and caring environment, which will both nurture and challenge you.

Our aim is to work with you to secure the achievements that support your ambitions and aspirations.

The College's experienced team of staff and outstanding post-16 facilities and resources will enhance your learning experience and prepare you for your next steps as you develop the skills to take responsibility for your own learning and achieve your potential. We look forward to welcoming you to the campus during the next year so you can meet our exceptional staff and students and see for yourselves everything that Callywith has to offer you.

I look forward to meeting you soon at an open event as you make the decision to join Callywith College and take the next exciting step in your future.



I am delighted to be able to welcome you to Callywith College and the many opportunities it provides for learners in North and East Cornwall.

Callywith College was created in association with Truro and Penwith College and built on its outstanding foundations with the aim of ensuring the same exceptional quality of experiences and outcomes for students. Ofsted's rating of Callywith College as "Outstanding" in every aspect of its work in January 2020, confirms those ambitious aims have been delivered.

Our students achieve excellent results across the board, and our staff excel in delivering the highest standard of education and support.

As you explore our prospectus, you will see the level of commitment and experience our staff bring to all aspects of college life. I hope you will decide to become part of this exciting and successful College.

David Walrond OBE
Chair of Trustees
Callywith College



CALLYWITH COLLEGE HAS ALREADY BECOME THE CHOICE OF SEVERAL THOUSANDS OF STUDENTS FROM ACROSS A WIDE AREA OF CORNWALL AND DEVON.

Since Callywith opened in September 2017, we have received excellent feedback from students and the wider community about the quality of experience and the facilities and resources on offer. At the start of only its seventh year, Callywith College has already become the choice of several thousands of students from across a wide area of Cornwall and Devon.





CHECK OUT
CALLYWITH
COLLEGE
LIFE ON
INSTAGRAM



MORE OF WHAT YOU LOVE

At Callywith College, we're big believers in choice. **YOUR** choice.

Studying here means you get to choose from an exciting range of subjects. Whether you are academic or prefer to learn by doing, it's easy to find the course that matches your interests, university goals or career aspirations. Our students tell us they have the time of their lives and make best friends here. You'll see why, surrounded by those who have made similar choices and opening doors to new opportunities you never knew you had. It's why we love our students having a choice.

This is **YOUR** time, and choosing Callywith College could be one of the best choices you ever make.

**WHATEVER YOUR PASSION, PURSUE YOUR DREAMS
AT CALLYWITH COLLEGE.**





KEEP UP-TO-DATE
WITH ALL THE LATEST
NEWS AND EVENTS
ON SOCIAL.



@callywithcollege/@callywith



“

I LOVE HAVING
THE FREEDOM TO
TAKE CONTROL
OF MY OWN
FUTURE AND THE
OPPORTUNITIES
YOU GET.



DISCOVER MORE



DISCOVER MORE. VISIT [CALLYWITH.AC.UK](https://callywith.ac.uk) FOR MORE COURSE INFORMATION & APPLY ONLINE

Once you've had a taste of what's on offer at Callywith College, head on over to our website and discover more. You'll find detailed course information, department overviews and lots of useful information to help you decide on the best course for you and make the most of your College experience. See our interactive virtual campus tours, 360 degree aerial views and Subject Spotlight videos offering you an insight into courses and student life. Take a look at our digital resources and study aids to help you get ready for your next step by visiting callywith.ac.uk/year-11

Of course, once you've done your research, our open events are the next step. There are many opportunities each year to join us where you can explore the campus, meet the staff and find out about your future at one of the best college's in the country. See the back page or website for open event dates.



SUBJECT SPOTLIGHT VIDEOS

Our course lecturers have created these Subject Spotlight videos to show you the wide range of courses you can study at Callywith College, what you can expect to learn and to give you an idea of what life as a student at our Outstanding college is like.



Discover more online:
[callywith.ac.uk/
 subjectspotlights](https://callywith.ac.uk/subjectspotlights)

360° INTERACTIVE CAMPUS TOURS & AERIAL VIEWS

Get hands on with amazing, fully interactive campus tours. Take control to zoom around buildings, click information points to find out more and explore the fantastic spaces, resources and facilities on offer.

You can also soar above our campus for a real birds eye view. See the scale of the whole site, the impressive state-of-the-art facilities made just for you and the fantastic location in the beautiful Cornish landscape. Discover a world of opportunity.



Take the tour online:
callywith.ac.uk/360callywith



OUTSTANDING EDUCATION

YOUR EDUCATION AND YOUR FUTURE COULDN'T BE IN BETTER HANDS WHEN YOU CHOOSE TO STUDY WITH **OFSTED OUTSTANDING CALLYWITH COLLEGE.**

We are officially recognised as one of the best colleges in the country and Ofsted has awarded Callywith College 'Outstanding' status as a result of its inspection in January 2020.

Not only are we one of the best performing state A Level providers in Cornwall, we are also one of the highest performing colleges nationally across a range of benchmarks.

The thriving, supportive community and positive, encouraging staff, combined with world-class facilities and exceptional tutors, provides you with the best opportunity to achieve your educational goals.



“

STUDENTS THRIVE UNDER THE **EXCEPTIONALLY SUPPORTIVE** AND CARING ENVIRONMENT.

Ofsted 2020

COMMENTS FROM OFSTED INSPECTORS INCLUDE:

“Students are overwhelmingly positive about all aspects of college life. They feel privileged to be a student at Callywith and take an immense pride in being part of the College community.”

“A thriving supportive community and inclusive culture where students are constantly reminded of their ability and worth by staff. Students feel very safe and valued.”

“Students, including those from disadvantaged backgrounds, make significant progress in developing their personal and social skills.”

“Students who join the college stay on their programmes. They go on to make good or outstanding progress towards their curriculum and personal goals and achieve their qualifications.”

“Callywith provides a wide range of carefully designed academic and vocational learning programmes and high-quality teaching, assessment and support.”

“Students are inspired to do well because staff treat them with great respect.”

“Teachers have a passion for the subjects they teach. They have excellent subject knowledge and vocational experience.”


“Since the opening of Callywith College in September 2017, leaders, managers and staff have worked tirelessly to create a culture of high expectations for all.”

“Callywith has a highly inclusive nature with highly-effective additional support from staff and a range of external agencies which help students with SEND and high needs and from disadvantaged backgrounds to continue with their studies, become more independent and make progress in line with their peers.”

“Governors, leaders and managers have a clear and ambitious vision for the college. They have developed a curriculum which raises the aspirations and achievements of its students and improves the life chances of young people living in one of the poorest regions in the UK.”

MAKE THE MOST OF IT

IT'S NOT ALL ABOUT YOUR STUDIES. STUDENT LIFE IS RICH, VIBRANT AND HUGEY REWARDING. **EMBRACE THE OPPORTUNITY.**



- 1 / EMMIE BULLEY - EXTENDED PROJECT QUALIFICATION (EPQ)

“At first, I chose the EPQ because it gave me the opportunity to find out more about a subject that I am interested in whilst gaining an extra qualification. However, the EPQ has also shown me what to expect at university and has helped me to develop valuable research and writing skills that will be useful in the future. I would recommend the EPQ to anyone, not just those wanting to go to university, as it is very rewarding and has helped me within my other subjects with things such as time management and critical thinking.”



- 2 / CORBEN JONES - STUDENT AMBASSADOR

“I decided to become a student ambassador because I enjoy helping. As a student ambassador I help show people the college on open days and talk about my student experiences. Being a student ambassador means you talk to people you have never met before, which helps build confidence with public speaking and meeting new people.”

● 3 / CHRIS BENTLEY - POLICE WORK EXPERIENCE

“The police work experience held at Callywith as part of my Uniformed Protective Services Diploma was very diverse in the amount you learn about the police and their respected duties. We were hands-on with self-defence training and even got to use different techniques on each other. We also had guest speakers talk about their roles and they showed us that being in the police isn't as it is shown on TV, but is still a very interesting career, overall I enjoyed the work experience and the chance to speak to both retired and serving officers.”



● 4 / JAMIE BASHFORD - CALLYWITH ACTIVE

“I decided to take part in the Callywith Active gym sessions because it's something to do in my free periods and it's a good use of time. The sessions can involve several things you can either do what you want or if you're not sure what to do, you can ask Callywith Active Lead Julian and he will give you advice on what to do for that session.”

● 5 / ELLIE HILLSON - DUKE OF EDINBURGH AWARD (DOFE) AND TEN TORS

“DofE and Ten Tors are two great opportunities to get out of the classroom and develop new skills that you can't get elsewhere. I have had the chance to meet many new people, make lasting friendships and most importantly, have a laugh! We take part in a wide range of activities from camping out on Dartmoor and cooking our own meals, to volunteering in our local communities and developing a skillset of our choice. It has given me the chance to gain independence and for us all to see what we are capable of.”

ACADEMIES

MAKE THE MOST OF IT

WHETHER IT IS SPORTING OR ACADEMIC, BY JOINING AN ACADEMY YOU WILL LOVE BEING IMMERSSED IN AN ENVIRONMENT THAT WILL **SEE YOUR SKILL-LEVELS SOAR.**

The achievements of Callywith College academy students are a huge source of pride for all involved, with team success in football and netball and breaking new ground in their chosen field of study. Callywith College academies provide students with a broad range of opportunities to excel and reach the next level.



NETBALL



ACADEMIC

CHRISTOPHER LEWIS GLANVILLE **ACADEMIC ACADEMY**

“The Academic Academy is one of the best opportunities at Callywith College. These lectures are so valuable in broadening my horizons and exposing me to new ideas and ways of thinking. I’ll use all that I’ve learned in my professional development and university studies.”

BENEDICT HAYDN-DAVIES **ACADEMIC ACADEMY COORDINATOR**

“The academy allows students an opportunity to develop their understanding of the world, stretching themselves beyond their core studies. Guest speakers offer advice and guidance on how to succeed in their specialist areas.”

SEE MORE OF OUR ACADEMIES ON PAGE 70



RUGBY



MEDICS'

MEG MAY NETBALL ACADEMY

“Joining the Netball Academy was one of the best decisions I made when I joined Callywith. I made so many new friends outside of my courses. The academy is really enjoyable, gets you out of your college seat between lessons and is a great way to get physically active.”

RACHEL HORTON NETBALL ACADEMY COACH

“The Netball Academy allows students to increase their skills, widen their understanding of the game, as well as improve their physical and mental health through weekly training sessions and games.”

LARA HILL FEMALE RUGBY CAPTAIN

“I enjoy helping and supporting others who are new to the sport. I love seeing the excitement on their faces when they achieve a new skill or when we win a game, the memories we make along the way make me proud to be a part of the team.”

KYLIE FOURACRES FEMALE RUGBY ACADEMY COACH

“The Female Rugby Academy provides athletes the opportunity to learn and develop their skills and knowledge through training, games and competitions against other colleges, as well as having fun and creating new friends and memories along the way.”

ABBIE JONES MEDICS' ACADEMY

“The Medics' Academy offers a range of activities to help introduce you to the medical field. We have practiced hand dexterity by threading tiny beads whilst holding forceps and also measured each other's heart rate/ blood pressure using practice equipment.”

DYLAN COOPER-WAITE MEDICS' ACADEMY

“We've been visited by many guest speakers, who have talked about a wide range of topics, such as medical ethics, application to medical school, and the importance of many other healthcare professions. We have also done lots of practical sessions and had opportunities to visit universities.”

OUTSTANDING OPPORTUNITIES

OUR STUDENTS ARE HAVING THE MOST INCREDIBLE EXPERIENCES.

A world of opportunity - Discover where in the world you could go with Callywith College: Students at the College have been on a wide range of trips to Iceland, Spain, France, Canada, Iceland, Eswatini, Honduras, Italy and Germany through trips in their subject area.



SPANISH TRIP VALENCIA

Students who study Spanish visit the vibrant and historic city of Valencia, soaking up the culture of the city and putting their spoken Spanish skills into practice. Students enjoyed a range of cultural activities including an urban art workshop, museums visits and Valencia's biggest fiesta, the Fallas festival.

SKI TRIP ITALY

Students hit the slopes, polishing up their ski skills with the help of local instructors in the beautiful mountains of Ponte Di Legno, Italy, with some students learning for the very first time!



GEOGRAPHY TRIP ESWATINI

Students learned about African culture as well as helping the College's Shewula Orphans' Fund charity and visiting local schools. Students could see what an impact education can have on life chances for children in the developing world.



**RUGBY ACADEMY TRIP
ROSSLYN PARK, LONDON**

Male and Female Rugby Academy students took a trip to the Rosslyn Park National Schools Sevens tournament in London - the largest schools tournament in the world for different age groups and genders.



GEOGRAPHY TRIP ICELAND

Students got a taste of adventure in Iceland. This remote sub-arctic nation afforded students diverse experiences including exploring the snowy foot of the notorious Eyjafjallajökull volcano, glacier ice hiking and an off-road excursion into Þórs mörk.



**HOLOCAUST AMBASSADOR
BERGEN-BELSEN**

Maddy-Rose and Lucy who study History, went on a harrowing trip to former concentration camp Bergen-Belsen where they met Holocaust survivor Mala Tribich. The trip aims to educate the next generation and to highlight what can happen if prejudice and racism become acceptable.

MEET THE TEAM

OUR **HIGHLY**
EXPERIENCED TEAM
IS COMMITTED TO
ENSURING STUDENTS
RECEIVE THE
HIGHEST POSSIBLE
LEVELS OF TEACHING
EXCELLENCE
COMBINED WITH
UNRIVALLED
STUDENT SUPPORT.

Teaching & Support Staff

Our teaching and support staff are committed to ensuring students have an outstanding learning experience in a caring and supportive atmosphere.

The Callywith teaching team are of the highest quality having a wealth of post-16 experience together with a range of support staff who ensure the College provides the highest level of pastoral care.

Senior Management Team

Callywith Principal Dr Jon Grey leads a dedicated senior management team consisting of Assistant Principals Jen Temple and Allyn Jefferies and Business Manager Rae Loom, along with six Programme Team Leaders (PTLs) - in delivering teaching and learning and student support services at Callywith College.

Callywith Principal Dr Jon Grey is responsible for ensuring that the subject specialists delivering the College's courses are given the best possible environment to help students achieve outstanding results.

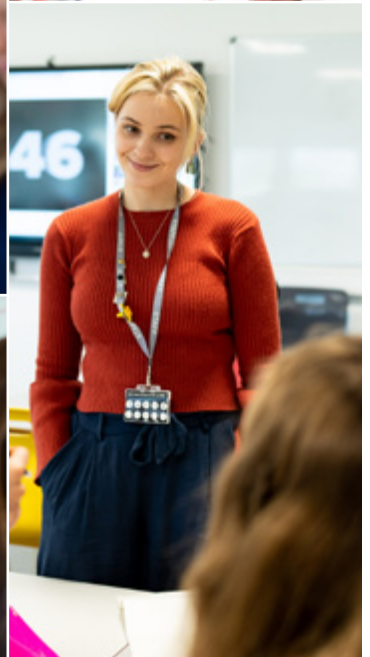
Jon and the Callywith Senior Management Team previously worked at Truro and Penwith College for several years in teaching, management and support roles and played a key role in both Truro and Penwith College and Callywith College achieving Ofsted Outstanding status' in 2016 and 2020.

Assistant Principals Jen Temple and Allyn Jefferies roles are vital to ensuring our students have an outstanding experience. Allyn leads on teaching and learning, ensuring that all students receive the highest quality of teaching; helping them to achieve outstanding results. Jen leads on the Callywith College student experience, ensuring students receive the best possible support.



HEAR FROM OUR TEAM AT ONE OF OUR **OPEN EVENTS.**

See the inside back page for
dates.



SUPPORTING YOU

WHATEVER YOU CHOOSE TO STUDY, WE'RE
HERE TO SUPPORT YOU THROUGHOUT YOUR
TIME AT CALLYWITH COLLEGE.



LUCY CLACK
LEARNING RESOURCES ASSISTANT

What support do you offer?

We offer support with a variety of academic study skills including essay structure, organisation and time management, revision and exam prep, research, note taking, referencing and managing mental health in academia.

How will it help me?

We are here to ensure your transition from GCSE into post-16 education is as smooth as possible, and that you feel supported and confident in your studies.

How do I find out more?

Stop by either of the Learning Centres, or simply ask your Personal Development Tutor to refer you. Alternatively, contact learningservices@callywith.ac.uk for more information or to make an appointment.



LEANNE ELSON
PERSONAL DEVELOPMENT TUTOR

What support do you offer?

Your Personal Development Tutor (PDT) will be there for your entire Callywith journey to support you with your academic and pastoral needs. We deliver sessions on a weekly basis to whole tutor groups on all aspects of life. Our sole focus is to make sure that students have a happy, enriched and supported time here at Callywith.

How will it help me?

You will have a dedicated Personal Development Tutor who is there to assist you with anything you need whether it be support with a university or job application, or techniques to help you handle exam stress/anxiety. You will always have someone who will actively listen to you and who you can ask advice throughout the college day.



JOHN RATCLIFFE
SPECIAL EDUCATIONAL NEEDS AND
DISABILITIES COORDINATOR

What support do you offer?

We can offer one-to-one support for identified high needs students, small group support, learning needs assessment on referral from lecturing staff and liaison with outside agencies. It is my role to ensure that appropriate provision is put in place for young people with Education, Health and Care Plans (EHCPs) and that information is shared with lecturing staff so that they are able to cater for their requirements.

How will it help me?

It will help you to effectively access your learning and enable you to achieve your very best.

How do I find out more?

Call me on 01208 224127 or email johnratcliffe@callywith.ac.uk



JAMIE CROWLE
STUDENT SERVICES TEAM LEADER

What support do you offer?

Our Student Services team are fully trained in trauma-informed approaches and welfare support and are dedicated to help you with any non-academic issues you may be experiencing, such as mental health, counselling, money, drugs & alcohol and careers. We offer a mix of one-to-one and small group support ranging from counselling and anxiety workshops through to our young carer and LGBTQ+ support groups. We have a chaplaincy service and even have our very own therapy dog, Macy!

How will it help me?

We have a very supportive culture here and recognise that coming to college isn't just about getting your qualifications; it is also about enabling you to become a well-rounded and resilient young person so that you can go on to be a successful adult. We recognise that, sometimes, things can happen that are out of your control and impact on your learning; therefore, we are passionate about your personal, social and emotional development.

How do I find out more?

Pop in to speak to us at any time in the Temple building, room T010 or email studentservices@callywith.ac.uk or call 01208 224460.



DAVID SELLARS
CAREERS ADVISOR

What support do you offer?

We are here to guide you through those all-important choices about what to do next and help you make sense of your future options.

How will it help me?

If you are uncertain about your career plan, our careers team can help you with choosing between different options. If you already have a progression route in mind, we can also advise you on how to get there.

How do I find out more?

You can visit our 'Careers Hub' online at callywith.ac.uk/careers for more information and links to helpful resources for students and their parents/carers or email careers@callywith.ac.uk



JULIAN WILLS
CALLYWITH ACTIVE LEAD

What support do you offer?

We deliver a number of programmes for students that offer free physical activity opportunities every day.

How will it help me?

Callywith Active offers non competitive, relaxed and friendly physical activity opportunities including gym sessions, fitness classes and sports sessions to help promote good physical health and mental wellbeing.

How do I find out more?

You can find out more by emailing callywithactive@callywith.ac.uk

GET RESULTS GO PLACES

WE KNOW YOU WILL HAVE **THE TIME OF YOUR LIFE AT CALLYWITH COLLEGE**, AND YOUR RESULTS ARE A BIG PART OF IT.

Callywith remains one of the top non-selective colleges in the country, where students consistently achieve outstanding results compared to local and national averages. The College was ranked as the top sixth-form college nationally for qualification achievement rate in Spring 2020 and featured in The Times - Best 20 state sixth-form colleges in England 2022.

In Summer 2023, 56% of A Level grades were A* - B (3 percentage points higher than the National Average) with 19% achieving at least AAB in their three subjects. Additionally, 45% of students on Extended Diploma qualifications achieved at least Distinction (equivalent to AAA at A Level in terms of UCAS points).



OLLIE RUNDLE - A* A* A A

Previous school: Launceston College

Extra activities: Hockey Academy and High Performance Academy

A Level Biology, Chemistry and Psychology and Extended Project Qualification (EPQ) student Ollie, is going on to study Pharmacology at Nottingham University.

"I'm really happy with my results as they are what I expected and ensured I got into my first-choice university. Staff at Callywith were super positive and helped me with any questions I had and lessons were a nice environment."



DAISY-MAE ROBERTS - DISTINCTION

Previous School: Launceston College

UAL Level 3 Art & Design Diploma student Daisy plans to study Graphic Design at Bath University.

"I am really happy with my results. I feel like my hard work has really paid off!

"Staff support here was excellent! The staff are such amazing lecturers and lovely people, they have really helped me throughout the UCAS application process and throughout my whole course."



JOE HIGHMOOR - A* A* A* A

Previous school: Wadebridge School

Extra activities: Academic Academy and Oxbridge Sessions

Joe studied A Levels in Maths, Physics, Chemistry and Further Maths and is going on to study Chemistry at Oxford University.

“I am very happy with my results and I am excited to see what the future holds. Callywith had all the support and facilities to launch me into higher education and the teachers gave me all the help I needed to reach my full potential. The Oxbridge workshops at the College supported me through the whole application process.”



BEX MUGFORD - TRIPLE DISTINCTION*

Previous School: Callington Community College

BTEC Level 3 Health & Social Care Diploma student outstanding results will see her study Clinical Psychology at Plymouth University.

“I am feeling really happy and proud of my results. My teachers at Callywith were really supportive and have helped with all aspects of College life and are always willing to help. I had a lot of fun in my lessons.”



FREYA BERRYMAN - A* B B

Previous school: Launceston College

Extra activities: Law Academy

Freya studied A Levels in Psychology, English Language and Law and is going on to study Law at UWE Bristol.

“I’m so happy with my results! I was not expecting it at all, so it was a big shock. The staff at Callywith, especially my lecturers, have always been such a massive support. I never would have achieved what I did without them.”

STUDENT DESTINATIONS

STUDENTS AT GALLYWITH COLLEGE **MAKE EXCELLENT PROGRESS, OFTEN WELL ABOVE PREDICTED OUTCOMES.** IT'S YOUR FIRST STEP TO AN INSPIRING FUTURE.

Your studies here are a perfect stepping-stone, preparing you for progression onto an Apprenticeship, into employment or like many of our students, to University. Here is a small taster of our student destinations and subject areas:

APPRENTICESHIP DESTINATIONS:

- 01 Cornwall Partnership NHS Foundation Trust**
L4 Operating Department Practitioner (ODP)
- 02 Devon Air Ambulance**
L3 Information Communication Technician
- 03 EDF Hinkley Point**
L4 Project Management
- 04 BAM Construct UK**
L4 Construction Management
- 05 Rowe IT**
L6 Software Engineer
- 06 Saputo Dairy UK**
L4 Finance
- 07 Aldi**
L3 Store Management

UNIVERSITY DESTINATIONS:

- 01 Cambridge University**
Education & Psychology
Human, Social and Political Science
Natural Science
- 02 Plymouth University**
Maritime Studies
Midwifery
- 03 Exeter University**
Maths & Politics
Zoology
Medicine
- 04 Falmouth University**
Fine Art
- 05 Cardiff University**
Architecture
Civil Engineering
Diagnostic Radiography
- 06 University Centre Truro & Penwith**
Children & Young People's Workforce
- 07 Bournemouth University**
Operating Department Practice
- 08 London South Bank University**
Children's Nursing
Law
- 09 Durham University**
Ancient History
Physics
- 10 York University**
History
Genetics

11 Loughborough University

Business Economics & Finance

12 Bristol UWE

Forensic Science
Business Management

13 Bath University

International Development with Economics

14 Bristol University

Geology
German & Russian

15 King's College London

Comparative Literature

16 Birmingham University

Biochemistry

24 Portsmouth University

Social Work

25 Cumbria University

Wildlife Filmmaking

26 Nottingham University

Criminology

27 Sheffield University

Chinese Studies with Japanese

28 Royal Holloway, University of London

Computer Science

29 Surrey University

Veterinary Medicine

30 Plymouth Marjon University

Journalism with Photography
Sports Therapy

31 University of St Andrews

Medieval History

17 Manchester University

French & English Language

18 Southampton University

Aeronautics & Astronautics

19 Imperial College London

Geology
Earth & Planetary Science

20 Warwick University

Mathematics
English Language & Linguistics

21 Greenwich University

Adult Nursing

22 Brighton University

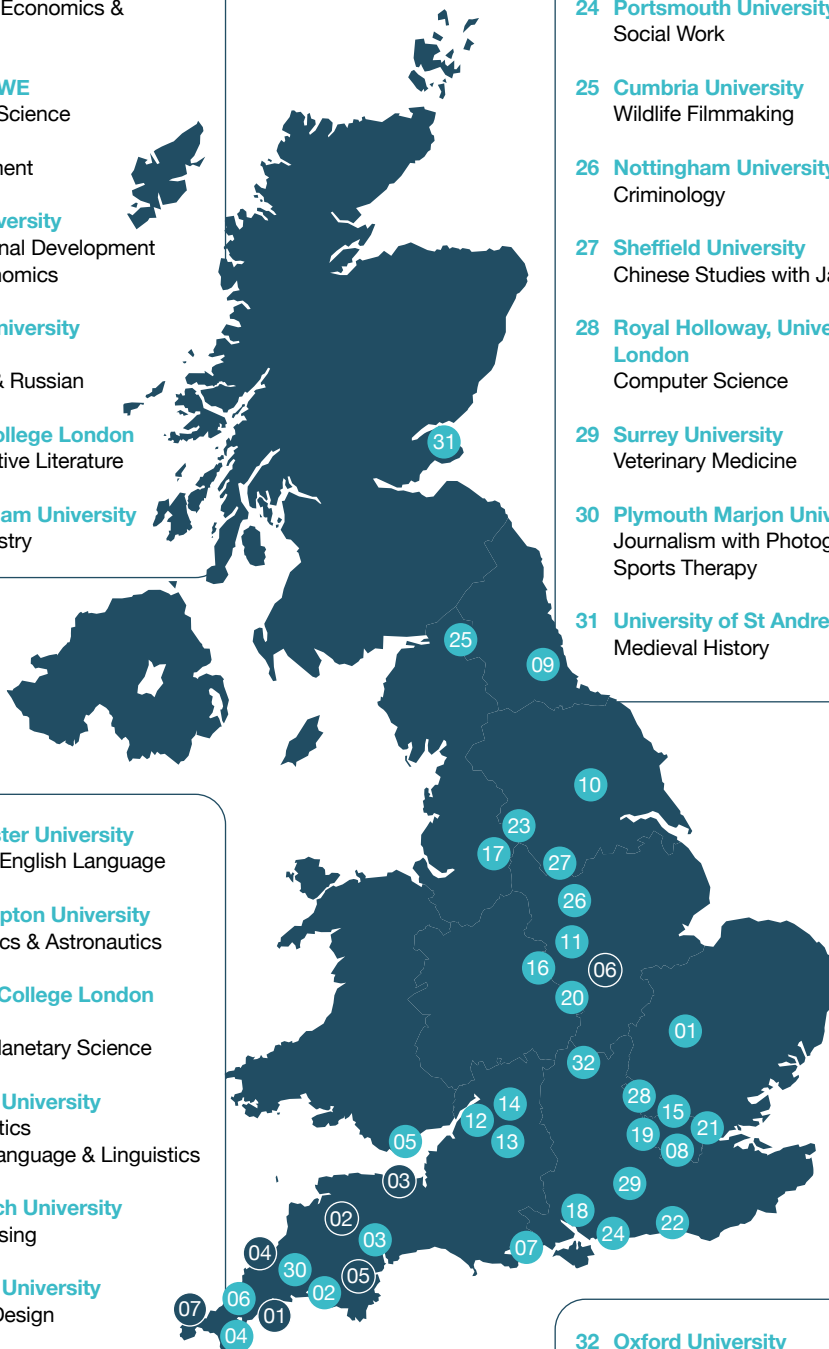
Graphic Design

23 Manchester Metropolitan University

Sport & Exercise Science

32 Oxford University

Law
History & French
Chemistry



OUTSTANDING OUTCOMES

OUR STUDENTS NOT ONLY HAVE **THE MOST INCREDIBLE EXPERIENCES**, BUT ALSO **EXCEL IN THEIR CHOSEN FIELDS.**

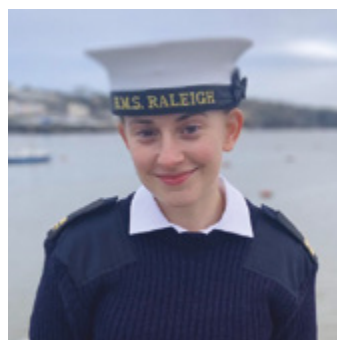
With a little ambition and the support from Callywith College, we'll help you get where you want to go, no matter where in the world that may be. Here is just a taster:



GEORGIA STEVENS
OXFORD UNIVERSITY - LAW

Previous school: Holsworthy Community College
Course/s studied: A Level Law, History and Geography
Extra activities: Extended Project Qualification (EPQ)

"The lecturers at Callywith were all so supportive in pushing me to achieve my full potential. They believed in me and encouraged me to aim high. There's a lot of support at Callywith with applying to Oxford including setting up mock interviews, which definitely helped. I spoke to some lawyers and some barristers, and they grilled me which is great because you need it!"



EDEN LYNCH
NAVAL STUDENT NURSE THROUGH
BIRMINGHAM CITY UNIVERSITY

Previous school: Bodmin College
Course/s studied: Level 3 Health & Social Care Diploma
Extra activities: Work experience shadowing healthcare professionals

"My time at Callywith has helped me so much with preparing for my future career, as well as giving me the opportunity to complete 100 hours of work experience shadowing healthcare professionals such as nurses, which helped me know that this is exactly what I wanted to do! I have felt a lot of encouragement and support at Callywith to go for every opportunity I can to help me get my offer."



Meet our alumni

Former students talk about their experiences, what they are up to now and what they plan to do next.

callywith.ac.uk/careers



BECCA LANGFORD
CAMBRIDGE UNIVERSITY - PSYCHOLOGY & EDUCATION

Previous school: Bodmin College
Course/s studied: A Level Psychology, Biology, Sociology and AS History
Extra activities: Extended Project Qualification (EPQ)

“My tutor at Callywith played a huge part in encouraging and supporting me throughout the university application process. She regularly met with me, reassured me and helped me to create an application and personal statement I was really pleased with. It’s been so encouraging to find that all of my A Level subjects have provided me with a solid foundation and have been really useful at university.”



TRISTAN YOUNG
LEVEL 6 DIGITAL & TECHNOLOGY SOLUTIONS APPRENTICESHIP WITH ROWE IT, EXETER UNIVERSITY

Previous school: Liskeard School
Course/s studied: IT Level 3 Diploma and A Level Maths

“The high level of teaching on the IT Diploma was invaluable in helping me to achieve excellent grades and to secure my degree level apprenticeship. My lecturers were very supportive of me going down the apprenticeship route. They gave me guidance and offered me support along the way.

“The IT course stretched and built my knowledge of computing providing me with practical knowledge, experience, and skills.”

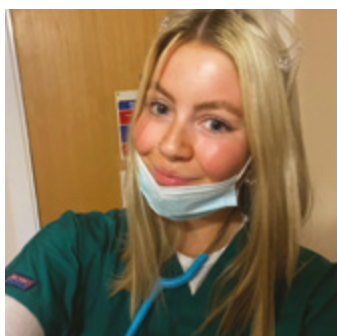


KYLE HOLLISTER
UNIVERSITY OF LONDON INSTITUTE, PARIS - FRENCH

Previous school: Saltash Community School
Course/s studied: A Levels in French, English Literature and Media Studies

“One of the things I liked the most about Callywith was how students are treated as grown-ups. Having now experienced university, I feel as though there was a very small jump between Callywith and my university.

“I loved all of my courses at Callywith, studying French cemented the fact I was going to study it at university. Despite only having been at university for less than a year, I’ve already used elements of all three of the subjects I studied at Callywith.”



RILEY GRIFFITHS
MEDICINE, EXETER UNIVERSITY

Previous school: Looe Community Academy
Course/s studied: Biology, Chemistry and Psychology
Extra activities: Medics’ Academy

“The Medics’ Academy really helped with the application process offering interview practice and the chance to speak to medical students for tips and advice. My lecturers were consistently supportive and I wouldn’t be where I am today without them.”

COURSES



Discover more online:
Watch our Subject Spotlight videos at
callywith.ac.uk/subjectspotlights



28

A LEVEL COURSES 32

APPLIED HUMAN BIOLOGY - A LEVEL EQUIVALENT	33
ART & DESIGN: FINE ART	33
ART & DESIGN: ILLUSTRATION/GRAPHICS	34
ART & DESIGN: TEXTILES	34
ART HISTORY: CRITICAL & CONTEXTUAL STUDIES	34
BIOLOGY	35
BUSINESS STUDIES	37
CHEMISTRY	37
CLASSICAL CIVILISATION	37
COMPUTER SCIENCE	38
CRIMINOLOGY - A LEVEL EQUIVALENT	38
DRAMA & THEATRE STUDIES	40
ECONOMICS	40
ENGLISH LANGUAGE	41
ENGLISH LANGUAGE & LITERATURE	41
ENGLISH LITERATURE	42
ENVIRONMENTAL SCIENCE	43
EXTENDED PROJECT QUALIFICATION - EPQ - 1/2 A LEVEL EQUIVALENT	43
FILM STUDIES	44
FRENCH	44
GEOGRAPHY	46
GEOLOGY	47
GERMAN	47
HEALTH & SOCIAL CARE - A LEVEL EQUIVALENT	47
HISTORY	49
LAW	49
INFORMATION TECHNOLOGY - A LEVEL EQUIVALENT	49
MATHEMATICS	50
MATHEMATICS - FURTHER	51
MATHEMATICAL STUDIES - CORE MATHS - 1/2 A LEVEL EQUIVALENT	51
MEDIA STUDIES	51
POLITICS	52
PHILOSOPHY OF RELIGION & ETHICS	52
PHOTOGRAPHY	54
PHYSICAL EDUCATION	54
PHYSICS	55
PSYCHOLOGY	55
SOCIOLOGY	57
SPANISH	57
SPORT & EXERCISE SCIENCE - A LEVEL EQUIVALENT	57

LEVEL 3 EXTENDED DIPLOMA & T LEVEL 58

APPLIED SCIENCE	59
ART & DESIGN	59
ART & DESIGN - PHOTOGRAPHY	60
BUSINESS	60
EDUCATION & EARLY YEARS - T LEVEL	62
CREATIVE MEDIA PRODUCTION & TECHNOLOGY	62
GAMES, ANIMATION & VFX SKILLS	63
HEALTH & SOCIAL CARE - HEALTH STUDIES	65
HEALTH & SOCIAL CARE - SOCIAL CARE	65
INFORMATION TECHNOLOGY	66
PERFORMING & PRODUCTION ARTS	66
UNIFORMED PROTECTIVE SERVICES	66
SPORT	69
TRAVEL & TOURISM	69

WHAT TO CHOOSE & ENTRY REQUIREMENTS

ACADEMIC OR MORE HANDS ON; **THERE'S A ROUTE FOR YOU.**

If you want to stay in full-time education, you can choose subjects that interest you, either a variety at A Level or specialising in one area on a vocational course.

All of these options will give you an advantage. Whether you want to find a job or go on to university, we'll help you make the choice that's right for you.

For more information about your options, make sure you attend one of our many Open Events. You will get the opportunity to see our fantastic facilities and find out about your life as a student at our Ofsted Outstanding College. See the inside back page for our open event dates.



30

Choose three A Levels from over 30 subjects. It's a good way of keeping your options open.



A LEVEL LEVEL 3

How long is it? Two years

What do you need? Five GCSEs at Grade 4 or above in appropriate subjects, to include English Language or Literature and/or Maths at Grade 5 or above and with specific relevant subjects related to your A Level choices at Grade 6 and above.

What is it? Advanced Level programmes consist of formal lectures, class activities and assessments, set homework and problem-solving. For each subject, you will also be required to undertake several hours of independent study. Modern study facilities are available in the College and successful students use these effectively.

We strongly encourage a broad programme for A Level students. Most subject specifications are assessed by examination but some include coursework assessment. All A Levels at the College will be delivered in the new linear format with no qualification at the end of year one. Academic assessment for Linear A Levels will take place at the end of two years of study. Students must study a minimum of three A Levels.

A full-time vocational course in a single specific subject that is equivalent to three A Levels.



EXTENDED DIPLOMA LEVEL 3

How long is it? Two years - In year one you will complete a Level 3 Foundation Diploma before progressing to gain the full Extended Diploma at the end of Year 2 unless otherwise stated.

What do you need? Four GCSEs at Grade 4 to include either English Language or Literature and/or Maths. A Level 2 Diploma at Merit in an appropriate subject can also be considered (plus English and/or Maths).

What is it? Previously known as the National Diploma, the 180-credit, 18-unit qualification is referred to as the Extended Diploma. This Diploma is equivalent to three subjects at A Level. It is an excellent route if you have decided on the broad area of employment you wish to pursue.

The combination of a range of specialist modules with the depth of knowledge acquired enables you to progress successfully into higher education or into employment. You will also be required to undertake several hours of independent study. Assessment is through coursework, external written assessments and evaluation of practical skills.

This new qualification combines classroom theory and practical learning with an extended industry placement of 45 days.



T LEVEL LEVEL 3

How long is it? Two years.

What do you need? Four GCSEs at Grade 4 to include either English Language or Literature and Maths. A Level 2 Diploma at Merit in an appropriate subject can also be considered (plus English and/or Maths).

What is it? T Levels are equivalent to three A Levels. T Levels combine classroom theory, practical learning and a three-month industry placement with an employer to make sure students have real experience of the workplace. T Levels have been developed in collaboration with employers so that the content meets the needs of industry and prepares students for work. They provide the knowledge and experience needed to open the door to highly skilled employment, an Apprenticeship or higher level study.

Around 80% of your time will be spent at College with the remaining 20% being spent at your placement. This differs to an Apprenticeship, which is typically 80% on-the-job and 20% in the classroom. Experience with a real employer in a real workplace will allow you to apply the skills and knowledge you learn in the classroom to the job, giving you a taste of the world of work you can expect once you complete your studies.

WHY CHOOSE A LEVELS AT CALLYWITH COLLEGE?

1 Want to study more than one subject area? Choose a variety of courses that you love with A Levels.

2 Study your favourite subjects in greater depth than ever before.

3 Enthusiastic lecturers dedicated to helping you achieve the very best you can.

A LEVEL COURSES



Discover more online:
Watch our **Subject Spotlight** videos at
callywith.ac.uk/subjectspotlights



EXTENDED CERTIFICATE APPLIED HUMAN BIOLOGY A LEVEL EQUIVALENT

● **Why choose this course?** This qualification is equivalent to one A Level and it has been designed to be part of a typical two-year study programme, alongside A Levels. Applied human biology forms the foundation of the health and health science sectors. The sectors are wide ranging, including nursing, midwifery, allied health and sciences including life sciences, clinical biomedical sciences and physiological sciences.

● **What will I learn?** The content allows learners to concentrate on the development of their knowledge and understanding as well as essential practical and research skills relevant in applied human biology and health science areas, over an extended period. There are four units on this course including Principles of Applied Human Biology, Practical Microbiology and Infectious Diseases, Human Biology and Health Issues and Genetics and Genetic Engineering.

● **Where will it take me?** Further study could be in the form of training alongside employment, an Apprenticeship or higher education. This course supports routes into nursing, midwifery, the allied health sector, life sciences and biomedical sciences. The course also carries UCAS points towards studying a whole raft of different degrees at university which are not necessarily directly linked to biology.

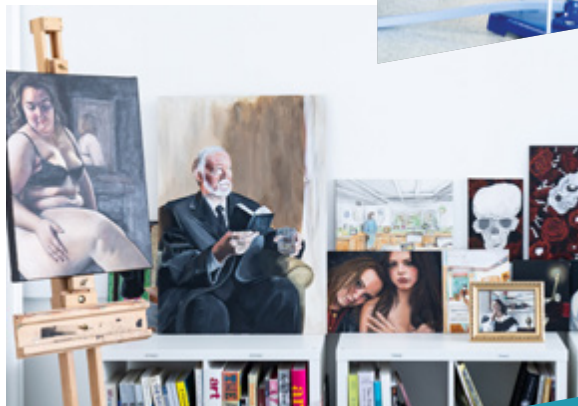
See page 30 for entry requirements

A LEVEL ART & DESIGN: FINE ART

● **Why choose this course?** Do you enjoy drawing? Would you like to improve your skills and knowledge? Would you like the opportunity to see and understand the world in a different way? This course offers you the opportunity to develop creatively, either as a personally enriching interest or as part of your progression towards a career within the creative industries.

● **What will I learn?** You will develop key skills and knowledge fundamental to the world of art and design. During a series of workshops, you will explore a range of two-dimensional materials and approaches, such as tone, mark making, ink, mixed media, colour and painting. You will explore how a range of modern and historic artists have communicated ideas through their imagery and techniques. Year two builds on your learning. Experimental drawing practical workshops are held throughout, encouraging you to take risks and work in new and different ways.

● **Where will it take me?** A qualification in Fine Art is highly valued by many universities and employers. As a 'Classical' 'creative' subject, it is applicable to almost any progression in art and design and an excellent subject to complement courses such as Architecture, History of Art, Film, Prosthetics and Theatrical Make Up, Art Therapy and Education.



A LEVEL ART & DESIGN: ILLUSTRATION/ GRAPHICS

● **Why choose this course?** Do you possess a lively, enquiring mind? Do you enjoy developing your ideas through drawing and utilising a range of processes towards a final product? You will learn to develop design solutions, exploring the power of visual communication as an invaluable commercial tool.

● **What will I learn?** You will begin with a range of varied and challenging workshops developing fundamental skills and knowledge integral to the world of illustration and design including a mix of traditional and contemporary processes. You will develop skills in industry-standard software including Adobe Photoshop, Illustrator and InDesign. Other aspects include typography, thumbnail sketches, layout design and mixed media. You will research a range of illustrative and graphic styles, applying this knowledge to develop your individual practice.

● **Where will it take me?** You can progress directly from A Level to an arts degree such as Graphic Design, Visual Communication, Illustration, Games Design and Multi-Media Design. Employment as a graphic designer is the clearest route but this course also offers a way into illustration or, with further study, animation; you could work for the media, an advertising company or design agency.

A LEVEL ART & DESIGN: TEXTILES

● **Why choose this course?** Do you love the tactile qualities of fabrics and stitch? Do you enjoy drawing and visualising your ideas through a hands-on approach to materials? The textiles course encourages you to explore the breadth of approaches available within contemporary textiles today.

● **What will I learn?** You will develop your skills in stitched, printed and constructed textile processes. You will have the opportunity to design one-off textile art pieces (both two and three dimensional), interior products or wearable accessories. Starting by exploring stitch (both hand and machine) as a drawing medium, you will build a comprehensive textiles vocabulary to help you find your own voice within the subject. Workshops are structured to familiarise you with different techniques and we will also explore how contemporary and historic textile makers communicate ideas. In addition to designing and making, there is a written element to the second year of the course where your learning will be supported by group presentations and contextual lectures preparing you well for higher education.

● **Where will it take me?** You can progress directly to a wide range of degree courses in preparation for a career in textiles, fashion or interior design.

A LEVEL ART HISTORY: CRITICAL & CONTEXTUAL STUDIES

● **Why choose this course?** It is an open and welcoming course for those who appreciate art in which, after an induction into the main ideas, issues and methods of art history, you can explore your own interests and focus on areas that arise as you learn more about the subject. This fascinating subject explores works of art that have been produced through the ages and, through these, what artists have tried to tell us about their worlds and lives.

● **What will I learn?** You will discover through formal lectures how art history reflects comments and interprets social and historical events. Through practical assignments, you will develop innovative opportunities to acquire critical, contextual and curatorial knowledge, understanding and skills in appreciating artefacts, texts and images within particular cultural environments, alongside relevant practical investigations. The option provides for a broad range of intellectual and practical learning experiences through a variety of lively and creative strategies for developing and presenting personal, practical, critical and contextual responses.

● **Where will it take me?** Art History is considered as an academic A Level; the equivalent of other humanities subjects such as History, English Literature, Philosophy etc. Therefore, alongside art courses, it can support university entry into a wide range of degree options.

[See page 30 for entry requirements](#)

A LEVEL BIOLOGY

● **Why choose this course?** If you enjoy learning about life and living organisms and want to delve deeper into concepts that you have been introduced to at GCSE, from biochemistry and cell biology to behaviour and ecology, then this course will offer you an exciting and challenging area of study.

● **What will I learn?** Biology encompasses the cellular basis of living things, the transformation of energy that underlies the activities of life, and the genetic basis for inheritance in organisms. You will study the evolutionary relationships between organisms and the diversity of life on earth, to include microorganisms, plants, animals and fungi.

● **Where will it take me?** A Level Biology is a highly respected qualification that is valued for many degree subjects and by employers worldwide. If you aspire to study biology or a biology-related subject at university, it is recommended that you also study A Level Chemistry, as together these broaden your options. Biology opens up a wide range of opportunities for university level study, including, but not limited to, medicine, nursing, dentistry, physiotherapy, veterinary science, zoology, radiography, agriculture and horticulture, marine biology, biochemistry, genetics, dietetics, nutrition, applied biology, botany, forensic science and many other possibilities.



GET CONNECTED.
SEE MORE OF COLLEGE
LIFE ON SOCIAL.

MEET THE TEAM

Q&A

LUCY MACDONALD BIOLOGY LECTURER & MEDICS' ACADEMY COORDINATOR



Lucy, who after graduating from vet school, decided to study her PGCE with Truro College, has been working as a Biology Lecturer at Callywith College for three years.

● **What inspired you to pursue a career in education?** I studied the International Baccalaureate when I was 16. The support I received during this crucial stage of my education had such a direct impact on my prospects and my route into veterinary. Being a recent university graduate, I felt my knowledge and experience were beneficial to current 16-18 year olds, and I knew the support they needed in order to achieve their goals.

● **What does your role involve?** I work directly with students to ensure they have the knowledge to achieve the qualifications they need for their progression. My role doesn't simply include delivering subject content, but supporting and inspiring students, particularly those enrolled on the Medics' Academy. These students are applying for highly competitive courses, Medics' Academy allows me to coach and prepare them for the challenge of applying to medicine, veterinary and dentistry, as well as other healthcare roles.

● **What about working at Callywith College do you enjoy the most?** I love working at Callywith - it is such a happy environment to be in for both staff and students.

● **What one thing about you might surprise people?** My whole life I worked towards getting into vet school and working in the animal field, my career change definitely surprised people (and myself), but I wouldn't look back. Veterinary is still my passion, but inspiring and supporting others is equally as important to me.

● **What advice would you give students considering applying for Science courses at Callywith?** Sciences are tough - you must be determined to work hard to be successful and achieve your goals.

“

LECTURERS CHALLENGE US TO THINK OUTSIDE THE BOX

MEET THE STUDENT

Q&A

RILEY UDY

Riley is from St Austell and studies A Levels in Biology, Chemistry, Maths and Further Maths. He also attends the High Performance, Medics' and Academic Academies and is a Student Wellbeing Ambassador. He previously attended Brannel School.

● **Why did you choose Callywith College?** At open days, lecturers immediately came across as passionate towards their subjects and willing to help every student perform as well as they possibly can.

● **What do you enjoy most about your courses?** I enjoy the depth of content and how lecturers challenge us to think creatively and outside of the box to answer any questions we have, and how subject content has strong links to real uses in the industry and future careers.

● **What's Callywith like?** Callywith is quite a small college, which I like because it's very easy to find your way around campus and meet up with friends or find a quiet space to study.

● **What are you hoping to do in the future?** My goal is to study medicine at university and then join the armed forces as a doctor.

● **What advice would you give future students?** Get involved during lessons and with lots of academies and activities that you find interesting. It's the best way to get to know lecturers, expand your knowledge and make new friends.

A LEVEL BUSINESS STUDIES

● **Why choose this course?** Plan on joining the world of work and industry? Whether it is setting up your own small business or working for a global multinational, many of the key areas of understanding and useful skills are introduced within this course.

● **What will I learn?** You will reflect upon the commercial world and how it impacts your daily life and future. You will explore how different businesses interact with consumers and competitors and how they make operational and financial decisions. This will help build on your understanding of what it takes to manage a business, the importance of the everyday decisions facing a business and how to consider a business' finances. You will consider the global environment that businesses now operate within and how a business' strategy must consider technological, social, environmental and ethical consequences.

● **Where will it take me?** Many universities highly value the qualification and it is a stepping stone to related topics such as Business Management, Economics, Marketing and Accountancy. The course provides a grounding into initial business concepts that will assist you within the industry, whether running your own business or as an employee.

See page 30 for entry requirements

A LEVEL CHEMISTRY

● **Why choose this course?** Throughout the course you will be challenged in the three main disciplines within the subject. Physical chemistry encompasses the behaviour of matter and how we can measure and dispense chemicals accurately, to allow our desired reactions to take place safely and successfully. Inorganic chemistry follows the intricate patterns of Mendeleev's masterpiece, the periodic table. You will learn to interpret the subtle rules that allow us to make sense of the known 118 chemical elements and begin to understand how and why they are arranged in their specific order. Finally, you will study organic chemistry, the specific chemistry of carbon and how it ranges from simple compounds found in crude oil, petrol and gas, to extremely complicated molecules of life such as condensation polymers and peptide chains.

● **What will I learn?** You will develop your practical skills through plenty of laboratory-based experiments; you will use your mathematical skills to solve problems in a classroom or workshop environment and you will also be introduced to modern analytical techniques such as mass spectrometry, infra-red spectroscopy and nuclear magnetic resonance spectroscopy to elucidate unique chemical structures. The real-life applications of these skills are numerous

● **Where will it take me?** If you want to study Medicine, Dentistry, Pharmacy or Veterinary Science then Chemistry is essential. An understanding of chemistry is desirable for the study of many subjects and is valued highly by universities.

A LEVEL CLASSICAL CIVILISATION

● **Why choose this course?** Classical Civilisation is an engaging course that explores Ancient Greek and Roman culture. You will explore everything from: mythology; art; literature; philosophy and society. This is an exciting opportunity to explore the first great western civilisations and to understand their ongoing impact upon western culture; its language, art and theatre, and its philosophy, religion and politics.

● **What will I learn?** You will study both Greek and Roman Epic; Homer's 'Odyssey', the ever-popular foundation stone of western literature and Virgil's 'Aeneid', Rome's sequel to the fall of Troy and the subsequent creation of the Roman race. From a visual perspective you will study the art of archaic and classical Greece, including vases, sculpture and architecture. You will also look at Greek religion and the nature of the Olympian Gods. This appreciation of the classical world will develop your understanding of major world events and understanding of wider culture.

● **Where will it take me?** The A Level is a highly regarded qualification by both higher education establishments and employers. You will gain access to careers including law, curation, business, marketing, media, politics and creative industries; as well as career pathways specifically involving historical or archaeological skills.



APPLIED DIPLOMA CRIMINOLOGY A LEVEL EQUIVALENT

● **Why choose this course?** This course and the qualification you will achieve is equivalent to one A Level and it has been designed to be part of a typical two-year study programme, alongside A Levels. An understanding of criminology is relevant to many job roles within the criminal justice sector, social and probation work and sociology and psychology.

● **What will I learn?** This course gives learners the opportunity to study different types of crime, influences, the criminal justice system and criminological theories. Learning will be related to authentic case studies. The content of this course allows learners to concentrate on the development of their knowledge and understanding of Criminology. There are four units on this course including Changing Awareness of Crime, Criminological Theories, Crime Scene to Courtroom and Crime and Punishment.

● **Where will it take me?** Successful completion of the course could allow entry into higher education, including Criminology, Criminology and Sociology, Law with Criminology and Psychology and Sociology. Alternatively, the qualification allows learners to gain the required understanding and skills to be able to consider employment within some aspects of the criminal justice system, e.g. the National Probation Service, the Courts and Tribunals Service or the National Offender Management Service.

A LEVEL COMPUTER SCIENCE

● **Why choose this course?** If you enjoy learning about the fundamental principles and concepts behind computer science and how software is engineered, then this course will stretch and challenge you. You will gain skills in a range of programming environments, how we use programming languages to solve problems, how digital technology is used, and the moral, ethical, legal and cultural opportunities and risks.

● **What will I learn?** You will develop practical skills in a range of programming languages, principally C#. You will use your programming skills to create a game of your choice using the Unity development platform.

You will learn how software interacts with hardware, data structures and processes and how the principles of hardware impact on software and data communication. You will also discover how software drives the digital economy and the implications of the digital revolution on society.

● **Where will it take me?** Computer Science complements many courses, such as Physics, Electronics, Mathematics, Technology-related courses, and other sciences and could lead to a degree in Computer Science or Computing-related subjects or a future in programming, networking, business, engineering or banking.



SEE MORE COURSE
DETAILS ONLINE.

See page 30 for entry requirements

MEET THE STUDENT

Q&A

ULA DOBROVOLSKYTE

Ula is from St Austell and studies the Applied Diploma in Criminology, Psychology and Environmental Science A Levels. She previously attended Penrice Academy.

● **What do you enjoy most about your courses?** There's a lot of opportunity for independent learning which increases my independence and prepares you well for uni. I also enjoy the experiments we do within lessons and the external trips we go on which lets us take a break from intense learning.

● **What are your future plans?** My favourite subject is criminology and literally the biggest factor for why I came to this college. In the future, I want to go to uni and carry on with criminology to gain a further degree and hopefully become a forensic scientist.

● **What advice would you give to future students?** Don't be afraid to explore your options, Callywith has so many courses and opportunities for you, it's okay to not know what you want to do, I would recommend to talk to course leaders to help you understand what a day-to-day lesson looks like to see if it's really the course you want to do.



**DON'T BE AFRAID
TO EXPLORE YOUR
OPTIONS. CALLYWITH
HAS SO MANY
OPPORTUNITIES
FOR YOU**

A LEVEL DRAMA & THEATRE STUDIES

● **Why choose this course?** If you enjoy learning about all aspects of drama and theatre then this course is for you. It is largely a practical course but we always consider the work of the influential playwrights, directors and theatre companies that make theatre so exciting and diverse.

● **What will I learn?** The course will provide you with the necessary skills to analyse and appreciate any play text or performance, recognising how historical and cultural contexts inform all areas of theatre-making while developing your performance skills. We have an excellent learning environment; our classes take place in a drama rehearsal room or a theatre space. This dedicated space encourages you to develop your understanding of professional working theatre.

● **Where will it take me?** The research, analytical and reflective writing, presentation and communication skills developed on this course are transferable to all areas of further study such as a degree in Drama or English, Media, Education and Humanities based subjects or a vocational route such as drama school to study Acting, Musical Theatre or Design. Drama also complements many courses, such as English Literature, Dance, Classics, any Media-related course and Education.



A LEVEL ECONOMICS

● **Why choose this course?** Economics relates to every aspect of our lives, from the decisions we make as individuals to the policies of firms and governments. The study of economics enables you to develop a deeper understanding of the world around us that is as valuable as it is interesting.

● **What will I learn?** Economics has been defined as the study of the allocation of scarce resources between competing claims and needs. You will explore the nature of markets and their role in allocating resources in a modern economy. You will use the concepts of supply and demand to analyse markets. You will also investigate the central role of the government when markets fail and examine the performance of the UK economy. You will focus on an understanding and analysis of the labour market and business structures and investigate the role of the government and examine key issues and policies affecting economic performance.

● **Where will it take me?** The qualification is highly valued by many universities and employers. Employers value Economics graduates for their analytical way of thinking and problem-solving skills. Economics graduates are amongst the highest paid graduates and there are numerous career options in public and private sectors.

DISCOVER MORE AT AN
OPEN EVENT. SEE THE
INSIDE BACK PAGE FOR
DETAILS.

A LEVEL ENGLISH LANGUAGE

● **Why choose this course?**

Imagine you could take your innermost thoughts and insert them into someone else's mind. Well, language allows you to do this. You will explore questions like: How do we learn how to speak and write? Is language being corrupted or is linguistic change gr8?

● **What will I learn?** You will learn to analyse texts effectively while applying a range of theories and using detailed linguistic terminology. You will explore how spoken, written and multimodal texts are influenced by context and both reflect and construct personal identities. The language analysed will be incredibly diverse from an informal text message between friends to a formal speech by the Prime Minister. You will also have plenty of opportunity to pursue your own interests in this subject and produce your own creative writing in a genre of your choice and conduct an independent investigation, which can focus on topics such as gender, power and journalism.

● **Where will it take me?** This course is highly valued by universities and employers and is an excellent subject to complement many courses, such as English Literature, Psychology, Sociology, Media Studies and Education. Some university courses also require English Literature.



A LEVEL ENGLISH LANGUAGE & LITERATURE

● **Why choose this course?** Love writing? Like to analyse...well, everything? This course allows you to be creative - not only in the fiction and non-fiction writing you will produce - but in your analytical work by imposing no rules as to how you should approach your analysis of a text. Word class? Sure. Imagery? Of course!

● **What will I learn?** Explore both non-literary and non-fiction texts and expect to study prose, drama and poetry as well as a range of texts such as articles, online copy and adverts. You will also explore the nature of spoken and multimodal language: how people talk and why they talk in the way they do.

You will develop your creative writing in different genres, reflecting on your practice in order to become a critical reviewer of your own, as well as others' works. You will also explore how literature represents 'Society and the Individual' by studying Fitzgerald's 'The Great Gatsby' and Hansberry's 'A Raisin in the Sun'.

● **Where will it take me?** This A Level enables you to develop the key critical, creative and analytical skills required both for progression to higher education and for enhanced employability. The course provides a grounding for either Language or Literature at degree level and is an excellent subject to complement many courses, such as Psychology, Sociology, any media-related course, Communication and Education.

MEET THE TEAM

Q&A

TRACEY WHITE

ART, LANGUAGES & MEDIA
PROGRAMME TEAM
LEADER



Tracey, who teaches A Level Literature, is also the Programme Team Leader for Art, Languages and Media at Callywith, ensuring that a high standard of provision is available to all students.

- **What part of working at Callywith College do you enjoy the most?** I am lucky to work alongside so many talented colleagues who are instrumental in making sure that we maintain the high standards we set for ourselves when Callywith first opened and are prepared to go 'above and beyond' in supporting our students and enabling them to receive the best possible education. We have a beautiful campus with wonderful facilities, and we strive to create a vibrant but hard-working atmosphere that we hope students will enjoy.
- **What one thing about you might surprise people?** I restore and upcycle furniture, pots, anything really! I like the idea of giving a new lease of life to something that no one else wants.
- **What advice would you give students considering applying for Callywith College?** First and foremost, know that your lecturers and personal development tutors want the best for you and will always be willing to help you in any way they can whether this be in the classroom or for extra support. Secondly, your studies will be more difficult and more demanding than at GCSE, but you will have time to complete work at college and I would use this time wisely, especially in creative subjects, to make full use of the college facilities. Finally, enjoy your time at Callywith, make new friends and fully participate in the many opportunities that will come your way.

A LEVEL ENGLISH LITERATURE

● **Why choose this course?** If you enjoy reading and analysing literary texts, then this is the course for you. You will study a range of challenging and stimulating works from a variety of periods from 1610-2010. The course offers opportunities for comparisons between texts and genres and considers works of literature in their historical and cultural contexts. You will learn the skills of close textual analysis and literary criticism.

● **What will I learn?** You will be introduced to dystopian fiction. A dystopia is a nightmarish society; writers use this genre to comment on and criticise their society. You will study Orwell's Nineteen Eighty-Four and (in Year 2) Atwood's The Handmaid's Tale. You will also study Williams' play A Streetcar Named Desire; the 19th century poems of Rossetti and Shakespeare's The Tempest. You will also study Ibsen's A Doll's House, a 19th century play with an ending so controversial Ibsen had to rewrite it in order to have it performed in Germany. You will also have a large degree of independence in your choice of texts and tasks for coursework.

● **Where will it take me?** This A Level is highly valued by universities. It provides an excellent grounding for studying English or other courses such as Modern Languages, Law and Teaching/Education.

See page 30 for entry requirements

A LEVEL ENVIRONMENTAL SCIENCE

● Why choose this course?

The biosphere is an essential component in creating and maintaining life processes on Earth, unfortunately many species and biomes are under threat and you will be able to evaluate how effective management strategies are in trying to save many species from extinction. In your second year, we will examine further how humans affect the planet through our demand for energy sources, release of pollutants and need for biological resources.

● **What will I learn?** In the first year, you will study The Living Environment, The Physical Environment and Research Methods. You will then study the atmosphere, hydrosphere and mineral resources. In the second year you will study Energy Resources and Pollution, Biological Resources, Sustainability and remaining aspects of Research Methods. You will learn about the importance of energy resources and suggest solutions to minimise current and future pollution problems. You will study agricultural and aquatic food production systems and investigate how humans have increased productivity.

● **Where will it take me?** The course could lead you to a career with an environment agency, The National Trust, The Forestry Commission, local wildlife trusts, environmental consultancies, National Parks, recycling organisations, waste management and water quality organisations.



EXTENDED PROJECT QUALIFICATION - EPQ

1/2 A LEVEL EQUIVALENT

● Why choose this course?

The Extended Project Qualification (EPQ) provides a unique opportunity to gain a qualification whilst studying a topic entirely of your own choice. It is equivalent to half an A Level and to be taken in addition to 3 other A Levels, rather than as a stand-alone subject. You will develop a range of functional and transferable skills to enhance university or job applications and be able to demonstrate passion for your intended degree and career path.

● What will I learn?

The EPQ allows you to explore in depth a subject which you find interesting and engaging. Providing it can be researched in an academic way, anything is possible: you really are limited only by your imagination. You will research a topic that significantly extends your knowledge in your other subject(s), or one based on personal interests. With the help of a dedicated supervisor, you will identify a focused title and aims then learn how to plan, research and carry out your project.

Expect to become an expert in your chosen field! The outcome may be a 5000-word report or an artefact (a practical outcome) with an accompanying 1000+ word report. Additionally, you will provide evidence of your process and deliver a presentation.

● Where will it take me?

Skills gained from the EPQ will not only benefit your other courses, but they are highly sought after by employers and universities. You will be able to discuss what you have learnt in personal statements and at interviews, really helping you to stand out in applications. The EPQ is worth up to 28 UCAS points and many universities lower course entry requirements based on a successful outcome (e.g. AAA or AAB with an EPQ). In fact, research suggests completing one enhances your chances of not only completing your degree but also obtaining a 1st or 2:1 (Southampton University, 2018).

A LEVEL FILM STUDIES

● Why choose this course?

Many consider film to be the main cultural innovation of the 20th century and the major art form of the last 100 years. Those who study it characteristically bring with them a high degree of enthusiasm for what is a powerful and culturally significant medium and this course offers the chance to gain hands-on experience of filmmaking and explore film language, history, theory and criticism. You will never see a film the same way again.

● What will I learn?

You will begin by exploring how aspects of film language are motivated for expressive affect. This includes an examination of the creative decisions involved in mise-en-scene, cinematography, editing, special effects and sound and a consideration of how the structuring concepts of narrative and genre control, meaning and spectator response. Film contexts are also explored, examining how social, cultural, political, historical and institutional factors shape meaning. Production work is a crucial part of the course and is integral to your study of film. Studying a diverse range of films from different contexts is designed to give you the opportunity to apply your knowledge and understanding of how films are constructed to your own filmmaking and screenwriting.

● Where will it take me?

A qualification in Film Studies is highly valued by many universities and employers alike. Film Studies is also an excellent subject to complement many courses, such as Media, English, Psychology, Sociology, Photography, Art and Design.



A LEVEL FRENCH

● Why choose this course?

A knowledge of French opens the doors to companies in France and other French-speaking parts of the world. As the world's fifth biggest economy and number-three destination for foreign investment, France is a key economic partner. That makes learning French an excellent choice for young people wanting to maximise their employment chances.

● What will I learn?

You will be able to improve your language skills and learn vocabulary based on a variety of topic areas as well as grammar rules, which will enable you to make sense of the language and to use it accurately. You will have regular conversation sessions to help you improve your confidence in speaking.

You will develop your knowledge of French-speaking countries and their culture, by studying various topics as part of your course, as well as a French film and a French book. Students will have the opportunity to take part in a visit to France during the course.

● Where will it take me?

A qualification in French is highly valued by universities and employers alike. At university, French can be studied alone or combined with almost any other subject. Employment prospects are very good for graduates with a language qualification.



GET CONNECTED.
SEE MORE OF COLLEGE
LIFE ON SOCIAL.

See page 30 for entry requirements



**CALLYWITH IS
EXTREMELY
POSITIVE WITH A
GOOD RANGE OF
RESOURCES AND
FACILITIES**



MEET THE STUDENT

Q&A

POPPY LAZENBURY

Poppy is from Gunnislake and studies A Level History, Fine Art and English Literature. She also takes the Extended Project Qualification (EPQ), and is on the Student Council as Equality, Diversity and Inclusion Representative. She previously attended Scott Medical and Healthcare College.

● **What do you enjoy most about your courses?** The content covered in A Level courses is honestly a lot more extensive than GCSE material, so I would say that I enjoy my course most when I understand a new concept or am able to clearly remember content from previous lessons. Seeing and recognising improvement is a rewarding part of A Levels.

● **What's Callywith Like?** Callywith is extremely progressive, with a good range of resources and facilities. The art and photography department, especially, has brilliant equipment, which has been fun to make the most of.

● **What are your future plans?** My plan had always been A Levels then university, but on the back of 7 years of GCSE and then A Level education, the call for a gap year was too strong to ignore. Most likely, I'll go to uni following my gap year, but I'm keeping my options open at the moment. I may find a job I love during my gap year, I may apply to an apprenticeship, or I may go to university. Either way, Callywith has honestly supported me on my way to following any of these paths.

● **What is your advice for future students?** Don't waste your free periods, use them well so you don't have to work as much at home.

MEET THE TEAM

Q&A

MATT ANDREWS
HUMANITIES DEPUTY
TEAM LEADER - DTL



Matt, who is responsible for establishing and delivering A Level Geography at Callywith, is the Deputy Team Leader for Humanities at the College.

- **What is your background in education?** After completing my A Levels at Truro College, I studied for a BSc in Geography at the University of Southampton and went on to complete my teacher training in secondary Geography at the University of Bristol. I have also worked at both the Truro and Penwith sites, teaching A Levels in Geography, World Development and Environmental Science alongside teaching Geography on the IB Diploma.
- **What part of working at Callywith College do you enjoy the most?** I am very fortunate to have taught so many enthusiastic and eager students who have a strong passion for the planet and an eagerness to learn about our world. I am so proud of their fantastic achievements to date and I'm very happy with the amazing Geography course we've created. I have also enjoyed working with my Callywith colleagues in setting up our outstanding new College and the challenges that we have been able to take on together.
- **What advice would you give students considering applying for Geography at Callywith?** If you enjoy learning about the diversity of Earth's environments, cultures and the geopolitical interactions that affect us on a daily basis and want to know more about the world that you will go on to explore, then you will not be disappointed if you choose Geography. The course gives a fantastic and up-to-date insight into the state of the world through studying a wide breadth of landscapes, issues and places.

A LEVEL GEOGRAPHY

● Why choose this course?

This course offers an exciting issues-based approach to studying both physical and human aspects of the subject. Applying your geographical knowledge, understanding and skills to the world around you, you will engage critically with a wide range of complex contemporary issues such as tectonic hazards, climate change, resource insecurity, globalisation and superpowers.

● **What will I learn?** You will make links between varied geographical concepts through synoptic themes embedded in the subject content including the different players involved in geographical issues and decisions, why attitudes to geographical issues vary so greatly and how this influences actions as well as futures and uncertainties. Inspired by geography as one of the key disciplines relevant to understanding the world's changing places and people, you will also develop a sense of achievement as you grow as a critical, independent thinker and as an informed and engaged citizen.

● **Where will it take me?** A qualification in geography is highly valued by many universities and employers alike. Geography is also an excellent subject to complement many other A Level courses, such as Environmental Science, Geology and History.

A LEVEL GEOLOGY

● **Why choose this course?** If you are fascinated by fossils and their evolutionary roots, which forces drive volcanoes and tsunamis, or perhaps you are concerned about the environmental consequences of the extraction of oil and gas and radioactive materials, then A Level Geology may be for you.

● **What will I learn?** You will investigate the Earth from its meteorite origins through to the range of rocks found in its different layers and surface environments. You will discover how geologists need a multitude of different skills to accurately measure and describe features in the environment and develop these skills through field trips in the UK and abroad. You will use geological maps and cross sections to investigate the difficulties of finding and extracting resources as well as studying the evolution of life on Earth and how geologists can use this knowledge to re-construct a geological timescale stretching back a billion years.

● **Where will it take me?** Geologists are required in the oil industry, mining, materials science, hydrogeology (water resources), civil engineering, geotechnical engineering, public services, geohazard prediction and mitigation, scientific research (e.g. climate change, seismology) and education.

APPLY NOW
FIND OUT HOW ON
PAGE 94.



A LEVEL GERMAN

● **Why choose this course?** Did you know that Germany is the UK's second largest trading partner after the USA? In fact, approximately 75% of UK international trade is with non-English speaking countries. It is therefore not surprising that British businesses are looking for linguists, and, in particular, for people who can speak German. That makes learning German an excellent choice for young people wanting to maximise their employment chances.

● **What will I learn?** You will develop all four language skills: speaking, reading, listening and writing by using a wide range of materials, both in and outside the classroom. You will also have the opportunity to take part in our exchange to Göttingen, which includes five days of work experience. You will develop your knowledge of German-speaking countries and their culture by studying various topics as part of your course, as well as a German film and a German book.

● **Where will it take me?** A qualification in German is highly valued by universities and employers alike. At university, German can be studied alone or combined with almost any subject. Employment prospects are very good for graduates with a language qualification.

EXTENDED CERTIFICATE HEALTH & SOCIAL CARE A LEVEL EQUIVALENT

● **Why choose this course?** This course and the qualification you will achieve is equivalent to one A Level and it has been designed to be part of a typical two-year study programme, alongside A Levels. This course gives an introduction to the health and social care sector. It is for learners who are interested in learning about the health and social care sector as part of a balanced study programme.

● **What will I learn?** This course provides the knowledge, understanding and skills that will prepare learners for further study or training. The content allows learners to concentrate on the development of their knowledge and understanding of Health and Social Care. The four units on this course are Human Lifespan Development, Working in Health and Social Care, Meeting Individual Care and Support Needs and Physiological Disorders.

● **Where will it take me?** Successful completion of the course could allow entry into higher education courses in health or social care including nursing, midwifery, paramedicine, teaching, social work, psychology and youth work degrees and/or employment or training in the health or social care sector.

See page 30 for entry requirements



“

SUPPORT IS
THERE FOR
EVERYONE NO
MATTER WHAT
YOU NEED

MEET THE STUDENT

Q&A

FREYA GODFREY

Freya is from Holsworthy, Devon and studies A Level Geography, Sociology and PE. She previously attended Holsworthy Community College.

- **Why did you choose Callywith College?** My choice was between here or Exeter, as both were equal distances but a direct bus, more suitable times and all on one new campus with new facilities clarified this choice for me after visiting on an open day.
- **What do you enjoy most about your courses?** I like that there is a mix of coursework and exams. My courses are all very different, yet interesting to find links between the subjects.
- **What's Callywith like?** Callywith has a welcoming environment with staff that have our learning and personal development at the centre of their interests. Input = output, lessons are vital for the stem of knowledge and lecturers encourage us to make the most of our timetabled lessons whilst making sure independent time is spent wisely. There is also a great social aspect on campus and plenty of space to work in whatever environment you desire.
- **What are you hoping to do in the future?** I will be going on to study at Plymouth Marjon University to do a specialist course to become a PE teacher at secondary school level.
- **Have you got any advice for future students?** Make the most of the two years, they go quickly. The support is there for everyone no matter what you need, so definitely make the most of it and work hard throughout your first year.



A LEVEL HISTORY

● **Why choose this course?**

The study of history helps us to understand and explain the past and is a fascinating subject in its own right. The course allows students that have studied GCSE History to develop their enjoyment and understanding of major world events.

● **What will I learn?** You will study the British Empire between 1857 and 1967 as well as the rise and fall of Weimar and Nazi Germany, 1918-1945. The final component comprises a historical investigation, looking at the history of the USA from 1763 to 1865. You will examine primary sources, extracts from historians and complete a 3,500 word piece of research.

● **Where will it take me?** History is a popular and highly regarded qualification by both universities and employers. The skills that you acquire as a historian, the ability to think clearly, to weigh up arguments and to analyse problems, are highly desirable. History students gain access to a wide variety of careers including business, law, marketing, media, and politics as well as career pathways including archaeologist, archivist, curator and teacher.

A LEVEL LAW

● **Why choose this course?** Law pervades every aspect of our lives; from a personal decision to purchase a concert ticket to encompassing major constitutional issues such as the complexities involved in the triggering of Article 50 in respect of our departure from the European Union. Law is an excellent choice for students who are keen to branch out and learn something new while developing a highly desirable skill set.

● **What will I learn?** You will have the opportunity to examine the various sources of law within our English legal system and explore both private (tort) and public law (criminal & human rights). You will be encouraged to engage fully and critically with current affairs, develop high-level skills in research, communication, analysis, ICT and debating and will experience the practical realities of advocacy. There will be opportunities to visit the local Crown and Magistrates Courts and take a tour round the Cornwall County Police Headquarters. Guest speakers include judges, solicitors, barristers and court reporters, who visit the college to help provide an insight into careers within the legal system. Law is a natural partner to English and History as well as Psychology and Sociology.

● **Where will it take me?** The study of law is for everyone, not just lawyers. Law A Level is highly valued by employers. Studying Law could not only lead to a career in the legal profession as a barrister, solicitor, coroner, legal executive or paralegal, but also to work in the commercial sector, business and finance, social welfare or politics.

EXTENDED CERTIFICATE INFORMATION TECHNOLOGY A LEVEL EQUIVALENT

● **Why choose this course?**

This course is equivalent to one A Level and designed to be part of a typical two-year study programme, alongside A Levels. It is ideal for learners who are interested in an introduction to the study of creating IT systems to manage and share information alongside other fields of study, with a view to progressing to a wide range of higher education courses, not necessarily in IT.

● **What will I learn?** This course provides the knowledge, understanding and skills that will prepare learners for further study or training. The content allows learners to concentrate on the development of their knowledge and understanding of IT. Learners will study areas such as the relationship between hardware and software that form an IT system, managing and processing data to support business and using IT to communicate and share information.

● **Where will it take me?** Successful completion of the course could allow entry into higher education, including Business, IT, Computing and Software Development. This course also enables learners to develop the skills needed for entry-level roles related to IT, including vocational apprenticeship roles and trainee/entry-level roles such as a social media specialist, web/content developer, or business analyst.

MEET THE TEAM

Q&A

MILLIE ROBERTS PERSONAL DEVELOPMENT TUTOR - PDT



Millie Roberts is one of the College's Personal Development Tutors; she provides pastoral support to students, helping them apply to university, overcome personal difficulties and motivate them to aim high.

● **What inspired you to pursue a career in education?** I feel it is hard for young people to feel genuinely proud of themselves. The first time I experienced such pride was during my graduation ceremony, when I realised how much I had achieved academically and personally. I feel that the opportunity for me to live abroad, to move away from home, to do something I enjoyed and that challenged me has shaped the person I am today. Realising these things inspired me to help young people find their own path, too.

● **What does your role involve?** As a Personal Development Tutor, I can work 1 on 1 with students to guide and advise them personally and academically. We explore what excites them, what they are passionate about, and what they are good at, to motivate and encourage them to aim high and take the necessary steps to their next goal. We also discuss and debate current affairs, mental health, careers and more as a tutor group once a week.

● **What about working at Callywith College do you enjoy the most?** How we are one community of staff and students, with mutual respect for one another. As staff, we will always want the student to achieve their goals, and I feel the students see how much we care, which helps us work as one team.

● **What advice would you give students considering applying for Callywith College?** Going to an FE college gives you a new sense of beginning and autonomy. Not only do you potentially have the opportunity to study a brand-new subject, but you can also enter a new community in our academies and groups. At Callywith, you are given the freedom to explore who you are, with the support and guidance from your personal development tutors and teachers. If you feel a bit lost in yourself and ready for a new adventure, Callywith is a great option for you.

A LEVEL MATHEMATICS

● **Why choose this course?**


Mathematics is a challenging and stimulating course that will encourage you to develop your mathematical skills, improve your ability to think logically and enable you to determine solutions to a wide range of problems. If you enjoyed studying GCSE Maths, particularly the more algebraic topics, and would like to significantly improve your mathematical skills, then this would be an ideal subject for you.

● **What will I learn?** You will need to be good at algebra before you start the course. Throughout the course, you will learn many new mathematical techniques and apply them to a variety of practical situations. At this level, mathematics is all about applying your knowledge to solve problems in real-life situations. You need to be logical so that you can follow a mathematical argument, and you need to be creative so that you can look for different ways to apply your skills to solve a problem.

● **Where will it take me?**

Mathematics is a versatile qualification that is well respected by employers and will be desirable if you are thinking of going on to study courses in subjects such as Computing, Economics, Engineering, Finance, Geography, Psychology or any of the sciences at degree level.

DISCOVER MORE AT AN
OPEN EVENT. SEE THE
INSIDE BACK PAGE FOR
DETAILS.



A LEVEL MATHEMATICS - FURTHER

● Why choose this course?

Enjoy solving puzzles and playing strategy games? Want to develop a deep understanding of big ideas and to know 'why' and not just 'how'? Do you want to develop problem-solving, logical reasoning, communication and resilience skills? Then this course is for you.

● **What will I learn?** By studying Further Mathematics you will increase your knowledge and understanding of mathematical techniques and their applications. Further Mathematics is a full A Level qualification that you can take alongside Mathematics. The course is designed to stretch and challenge able young mathematicians by introducing you to new techniques and concepts, such as complex numbers and matrices.

● Where will it take me?

A qualification in Further Mathematics is highly valued by universities and employers. There are obvious links with Computing, Sciences and Finance based courses but the course can also be useful for sharpening up thinking skills, logical reasoning and pattern spotting. Many universities require Further Mathematics for admission to Mathematics degrees, some also prefer applicants for Engineering, Computing, Economics and Actuarial Science courses to have studied Further Mathematics.

LEVEL 3 MATHEMATICAL STUDIES - CORE MATHS 1/2 A LEVEL EQUIVALENT

● Why choose this course?

Throughout the course you will learn many new mathematical techniques and apply them to a variety of practical situations. Studying Core Maths will support the study of several other subjects, such as Physics, Chemistry, Biology, Geography, Psychology, Sport, Economics, Engineering, IT and Business Studies.

● **What will I learn?** The Core Maths course will extend some of the key ideas from GCSE Mathematics such as coordinate geometry, statistics and algebra. You will also meet material that may be new to you such as logarithms, functions and finance. You will use the core material to solve practical problems and find out about some of the background stories behind the ideas. You will also learn about statistical distributions and graphical techniques. The initial part of the course will follow similar content to A Level Mathematics and there will be a possibility at the start to switch to the two-year A Level course if it is deemed more appropriate.

● Where will it take me?

A qualification in Level 3 Mathematical Studies is valued by many universities and employers. Level 3 Mathematical Studies will be desirable if you are thinking of going on to study courses in subjects such as Computing, Economics, Engineering, Finance, Geography, Psychology or any of the Sciences at degree level.

A LEVEL MEDIA STUDIES

● Why choose this course?

The media play a central role in contemporary culture, society and politics. They shape our perceptions of the world through the representations, ideas and points of view they offer and have real relevance and importance in our lives today, providing us with ways to communicate, forms of cultural expression and the ability to participate in key aspects of society.

● **What will I learn?** You will study a wide range of media products, undertaking detailed analysis of how the media communicate meanings in a variety of forms. You will debate the social, cultural and economic relevance and impact of the media as well as the way TV, radio, film, news, music, publishing, social media, advertising and games are constructed to better understand the powerful and complex messages we receive. You will also develop photography and design skills using Adobe Photoshop and InDesign as well as developing web and film skills.

● **Where will it take me?** The course can lead to a degree in areas such as Journalism, Graphic Design, Advertising or Film and TV production. You will not only develop practical skills and a critical awareness of the media but also employability skills such as communication, interpersonal, organisational and problem-solving skills.

See page 30 for entry requirements



A LEVEL POLITICS

● **Why choose this course?** The study of politics is the study of power. Who has it? Why do they have it? How can we change this? In addition, the subject allows you to develop your skills in critical thinking and analysis, skills valued in higher education and employment.

● **What will I learn?** In your first year, you will study politics in the United Kingdom, including how our government works, the political parties within it, and the influence of the media and voters.

You will also look at key political ideas including Liberalism, Conservatism, Socialism and Feminism. In the second year, you will study the way the world is governed – from democracies to dictatorships, how nations compete and cooperate, as well as the importance and limitations of international organisations such as the United Nations.

● **Where will it take me?** Students who study this course often go on to do History, Law, Politics, International Relations, and Philosophy at university - all of which allow progression into multiple careers in different sectors, such as business, law, marketing, media, not-for-profit organisations, pressure groups and of course a career in politics.

A LEVEL PHILOSOPHY OF RELIGION & ETHICS

● **Why choose this course?** This course addresses some of the big questions that face human beings like: What is the purpose of my life? What am I? How should I live? And why should I do what is right? Is there a God? And if so, what sort of God might that be? If you are the type of person who is accused of thinking too much, if Google can't answer your questions and if you like spending time wondering whether your real life is the one in your dreams and that you are reading this in your sleep, then this course might be for you.

● **What will I learn?** The course aims to take these problems seriously and attempt to find real answers to them by attempting to apply rigorous logic, finding the right types of evidence and evaluating possible approaches. It is not about sharing opinions; it is about the meticulous analysis of the problem and scrupulous attention to detail.

● **Where will it take me?** Philosophy of Religion & Ethics is recognised as a respected entrance qualification by all universities, and employers are aware that it helps to develop an individual's ability to communicate, work with others and solve complex problems. Given the emphasis on ethics in this course it might be useful for those considering careers in law or medicine.

[See page 30 for entry requirements](#)

MEET THE STUDENT

Q&A

CAI KARSERAS SUMI

Cai is from Downderry and studies Politics, Sociology and Economics A Levels and is the Chair of the Student Council. He previously attended Tokyo Chitose High School.

● **Why did you choose Callywith College?** I chose Callywith for the lessons which are engaging, the teachers' passion and their active motivation for the students to pursue their academic achievements and educational experiences to be flourished.

● **What do you enjoy most about your courses?** The synoptic links I find between courses are very much my enjoyment from learning. Understanding how different subjects intervene each other gives me a new idea and perspective to write in my answers.

● **What's Callywith like?** In my case, I had to learn the academic side of the language from the beginning, as well as the subject content. The College has been supportive in providing an excellent environment for learning with excellent facilities and staff.



“
AN EXCELLENT
ENVIRONMENT FOR
LEARNING WITH
EXCELLENT FACILITIES

A LEVEL PHOTOGRAPHY

● **Why choose this course?**

Photography is an art of observation. It has little to do with the things you see and everything to do with the way you see them. It allows us to tell our story and show others our framing of the world around us. This course provides opportunities to engage in projects that encourage creativity, investigation, analysis and experimentation as a means of developing technical and expressive skills.

● **What will I learn?** The course encourages the development of your own visual language while improving your understanding of the broad visual, cultural and theoretical contexts in which contemporary photographers operate.

You will learn a broad range of photographic and camera skills - both analogue and digital - utilising traditional darkroom and digital Photoshop techniques. The course will teach you to appreciate photographic theory and practice and to understand the work of artists and pioneers in the development of the photographic medium.

● **Where will it take me?**

Successful completion of the course can lead to further study or employment in all areas of lens-based and visual arts including art foundation, media, film, multi-media, graphic design, journalism, advertising, illustration and PR.

A LEVEL PHYSICAL EDUCATION

● **Why choose this course?** This course is designed for students with an interest in the main theoretical components of physical education and those who display a high sporting level in at least one sport as a performer and/or coach.

● **What will I learn?** The course looks at anatomical, physiological and psychological theories and applies them to current sporting activity and performance. Everyone on the course will undertake a piece of written coursework, where you will analyse sporting performance and develop ways to improve either your own personal skill level or that of others. You are also assessed practically in one sport, concentrating on core skills and technical competence in a competitive situation. The two exams focus on applied anatomy and exercise physiology, skill acquisition and sports psychology, and sport in society.

● **Where will it take me?** You can progress directly to a wide range of degree courses in preparation for future careers including; teaching, coaching, physiotherapy, sports therapy, sports retail, journalism, sport administration in leisure and sports development. Further possibilities include Truro and Penwith College's Higher Education courses in Sports Coaching, Sports Therapy and Exercise Health and Fitness.

APPLY NOW
FIND OUT HOW ON
PAGE 94.

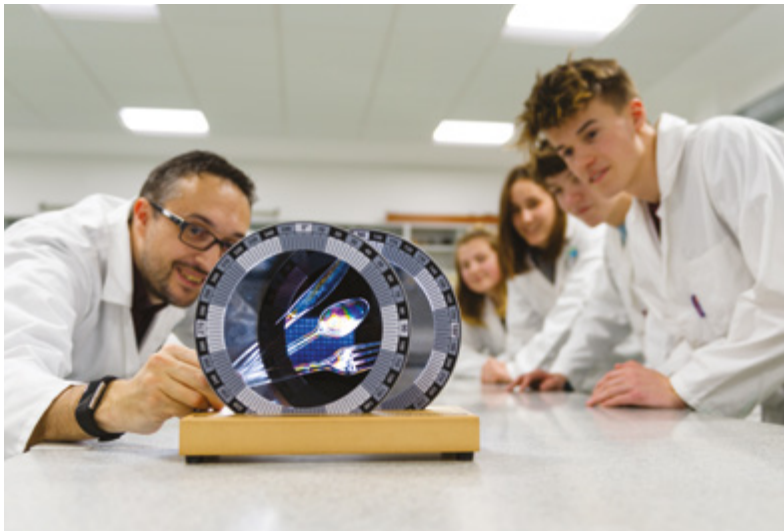


A LEVEL PHYSICS

● **Why choose this course?** If you are interested in questions like: What happens if I go into a black hole? What is a Higgs boson? And what happens if I travel near to the speed of light?, then this course will challenge you to consider these questions - and many more.

● **What will I learn?** Physics allows you to understand the fundamental structure of the universe from atoms (or smaller!) to galaxies (or bigger!) and how the matter within the universe interacts. You will discover that the same underlying physical laws can be applied from everyday situations such as electric circuits or theme park rides to complex situations like particle accelerators or black holes.

● **Where will it take me?** To study Physics, Electronics or Engineering at degree level you will need A Level Physics. However, an understanding of physics is also desirable for Mathematics, Computer Science, Chemistry, Geology, and many other university courses. Studying the physical sciences at university level provides you with problem-solving, communication, creativity and teamwork skills, as well as opportunities in careers within many exciting fields of work including meteorology, finance, law and journalism. Students who want to study a degree in Physics or Engineering at university, are also expected to study A Level Mathematics.



A LEVEL PSYCHOLOGY

● **Why choose this course?** A successful Psychology student has an appetite for understanding how scientific principles can be applied to human behaviour. If you are interested in people and inquisitive about their behaviour, this is the subject for you.

● **What will I learn?** Psychology is the science of mind and behaviour. We look at people's motivations behind different behaviours from a scientific point of view. We explore research into behaviours in an attempt to explore answers to questions such as: Are some people just born evil? Are each of the hemispheres of the brain responsible for different functions and behaviours and how would we know?

Topics range from biological explanations of behaviour to how interacting with other people can influence your behaviour.

● **Where will it take me?** Studying Psychology will equip you with numeracy, communication, IT, organisation and analysis skills and provides a valuable background for a variety of careers including management, personnel, advertising, marketing, teaching, uniformed services, nursing, health and welfare. Further training and experience beyond degree level is usually required for qualification as a professional psychologist; clinical, educational, forensic or organisational.



CHECK IT OUT. SEE THE STATE-OF-THE-ART CAMPUS AND FANTASTIC FACILITIES THROUGH OUR 360° INTERACTIVE CAMPUS TOURS

See page 30 for entry requirements



MEET THE STUDENT

Q&A

NATHAN CHIREBVU

Nathan from Liskeard studies Geography, Environmental Science and Sociology A Levels and takes part in the Rugby Academy. He previously attended Karoi High (Zimbabwe).

“

I CHOSE CALLYWITH
FOR ITS OUTSTANDING
REPUTATION OF GOOD
COURSES AND HIGH
GRADES

● **Why did you choose Callywith?** I chose Callywith for its outstanding reputation of good courses and high grades, also paving a way for students who want to go to uni or do many kinds of programmes.

● **What do you enjoy the most about your courses?** Firstly, the teachers are so supportive. Their interactions make it easier for us to understand what needs to be done. Sociology is my favourite, especially when we study how humans behave and read books like *The Criminal Man* in crime and deviance.

● **What's Callywith like?** Callywith is a college for everyone, differences respected and the outline of the courses just makes it easier. The College has large and impressive study rooms with many resources, as well as so many sports activities (including rugby, which is my favourite!)

● **What are you hoping to do in the future?** I am hoping to go into Nursing in the future.

A LEVEL SOCIOLOGY

● **Why choose this course?**

Sociology is the study of society, explanations of social behaviour and an investigation into individuals' relationships with society. Sociologists would claim that society is the single most important influence in your life and would argue that our behaviour can be largely explained by social circumstances and experiences.

● **What will I learn?** This course considers points of view on society, including those that largely approve of the way it works (Functionalism) to those that argue for change (Marxism and Feminism). You will learn to think critically and independently about society and your place in it, and develop a critical and informed understanding of the world around you. Topics include: Families and Households, Education, Theory and Methods, Beliefs and Crime and Deviance.

● **Where will it take me?**

Sociology is highly valued by many universities and employers and provides students with valuable analytical and evaluative skills. The objective and rigorous nature of this subject can lead to a range of careers, such as management, human resources, social work, the civil service, the criminal justice system, national or local government and law.

See page 30 for entry requirements

A LEVEL SPANISH

● **Why choose this course?**

Spanish is spoken in 23 countries by more than 470 million people. It is also one of the official languages of the United Nations, the European Union and numerous other international organisations. Spain is one of the UK's most important trading partners and the number of British small businesses exporting to South America has almost doubled in the last five years.

● **What will I learn?** You will develop all four language skills: speaking, reading, listening and writing through a wide range of materials, both inside and outside the classroom. You will also have the opportunity to take part in one of our language visits to Andalucía, in the south of Spain, or Valencia in the east. You will develop your knowledge of Spanish speaking countries and their culture. You will do this by studying various topics as part of your course, as well as a Spanish language film and book.

● **Where will it take me?**

Spanish can be studied alone or combined with almost any other subject including Business, Law and Science. Spanish is of huge global importance. There are ever increasing opportunities for Spanish speakers to work in Europe and Latin America. Language graduates have the highest employment rate after students of Medicine, Dentistry and Veterinary Science.

EXTENDED CERTIFICATE SPORT & EXERCISE SCIENCE A LEVEL EQUIVALENT

● **Why choose this course?**

This course is equivalent to one A Level and it has been designed to be part of a typical two-year study programme, alongside A Levels. This course will suit you if you have an interest in undertaking a sport or health related career such as sports nutrition, sports psychology, strength and conditioning, sports therapy, physiotherapy, or sports coaching, amongst many others.

● **What will I learn?** With a strong academic focus, this course will suit you if you have an interest in the scientific study of sports performance. You will discover how to apply theoretical and practical techniques to analyse and improve the sporting performance of yourself and others. There are two formal externally set assessments in Functional Anatomy and Applied Sport and Exercise Psychology, a mandatory internally assessed unit in Coaching for Performance and Fitness and one optional unit to be chosen from Specialised Fitness Training, Biomechanics or Physical Activity for Individual and Group-based Exercise.

● **Where will it take me?** You will develop a wide range of skills and knowledge that will enable you to either progress onto Higher Education or into employment in sports related industries, especially into those requiring a scientific background. The course also carries UCAS points towards studying a whole raft of different degrees at university which are not necessarily directly linked to Sports Science.

WHY CHOOSE A VOCATIONAL COURSE AT CALLYWITH COLLEGE?

- 1** Ideal for those who know the area of study or career they would like to pursue.
 - 2** Specialist modules will give you in-depth knowledge and experience.
 - 3** A widely accepted route to university where the vocational subjects are compatible.
-

LEVEL 3 EXTENDED DIPLOMA & T LEVEL



Discover more online:
Watch our Subject Spotlight videos at
callywith.ac.uk/subjectspotlights

58

LEVEL 3 EXTENDED DIPLOMA APPLIED SCIENCE

● **Why choose this course?** This course is designed to give you a detailed understanding of aspects of science with an emphasis on the skills and knowledge used in many fields of science including forensic, medical, chemical and biological sciences.

● **What will I learn?** You will study a range of core scientific and specialist units that will develop your scientific understanding. You will develop your practical skills through a series of assignments and challenging investigations that utilise techniques used by scientists in industry. These include microscopy, spectroscopy, genetic analysis, chemical and biological testing. The course also covers aspects of medical science including applications of physics, physiological investigations and diseases and infections.

● **Where will it take me?** Various careers are possible including hospital and research laboratories, school or college laboratories, forensic laboratory work, and scenes of crime work. The course can also lead to various science-based courses at higher education including Chemical and Biological Sciences, Criminology and Forensic Science, Biomedical Science, Radiography, Food and Nutrition and Pharmaceutical Science.



LEVEL 3 EXTENDED DIPLOMA ART & DESIGN

● **Why choose this course?** You will discover how artists, designers and makers see the world and learn how they develop and realise their original ideas in both gallery and commercial settings. You will be able to use art and design to communicate your innovative ideas effectively and realise your potential within the creative industries.

● **What will I learn?** Your journey will begin with experimentation and development of essential art and design skills in all the specialist areas we offer. Your diploma programme will combine nine creative areas by themes, enabling you to discover your interest, including: digital, fine art, graphic design, contextual understanding, life drawing, printmaking, textiles and three-dimensional design.

● **Where will it take me?** The Extended Diploma will provide you with the opportunity to utilise and develop broad, transferable skills, encouraging your personal and professional development. Progression to a higher education degree course is usual, allowing direct access to courses such as: Fine Art, Illustration, Interior Design, Fashion, Architecture, History of Art, Film, Prosthetics and Theatrical Make Up, Therapy and Education.



GET CONNECTED.
SEE MORE OF COLLEGE
LIFE ON SOCIAL.

See page 30 for entry requirements



LEVEL 3 EXTENDED DIPLOMA ART & DESIGN - PHOTOGRAPHY

● **Why choose this course?** If you enjoy creating photographic images, then the course will stretch and challenge you by providing an opportunity to engage in projects that encourage creativity, investigation, analysis and experimentation as a means of developing technical and expressive skills.

● **What will I learn?** You will learn a broad range of analogue and digital photographic skills using the darkroom, an industry-standard studio and appropriate software. You will also be introduced to a range of theoretical perspectives which influence the development of image making.

This will encourage you to consider how photography is relevant to wider creative practices as well as its links to political, social and cultural discourses. Divided across 13 units, the course will allow you to apply your skills to a range of contexts including advertising, editorial and fine art, while enabling you to make creative decisions to replicate the demands of the industry.

● **Where will it take me?** Completion of this course usually results in students going to university to study courses aimed at working within the wider creative industries. Completion of this course allows access to a range of creative courses including photography, documentary photography, graphic design, film and moving image production and arts education.

DISCOVER MORE AT AN
OPEN EVENT. SEE THE
INSIDE BACK PAGE FOR
DETAILS.

LEVEL 3 EXTENDED DIPLOMA BUSINESS

● **Why choose this course?**

Want to start your own business? Make your ideas happen? Create exciting advertising campaigns? Learn how to manage a team of professionals? Or ever wondered how a business operates in an ever changing environment? Then this course is for you.

● **What will I learn?** The course will provide you with an understanding of how marketing, human resources, accounts, operations, sales, project teams, management teams and directors and customer service interlink to achieve business aims and objectives, together with essential knowledge of how the business environment impacts upon successful business planning. The course will enable you to acquire vital skills and the critical awareness necessary for managing teams and creating value for a business, while preparing you for your career. There are various optional units including: Recruitment and Selection, Events Management and Creative Product Promotion.

● **Where will it take me?** Business is such a diverse subject that there are a wide number of progression opportunities available ranging from studying the subject further at higher education, securing a business-related Apprenticeship or even starting your own small business.

See page 30 for entry requirements

MEET THE STUDENT

Q&A

CHARLIE HOYLE

Charlie is from Bodmin and studies the Level 3 Extended Diploma in Business. He previously attended Jose Maria College in the Philippines.

● **Why did you choose Callywith College?** I chose Callywith College because of the great facilities and the friendly teachers and staff.

● **What do you enjoy most about your course?** I love the high level of detail of the business course and the variations of the lessons.

● **What's Callywith like?** Callywith is full of opportunities and unique courses.

● **What are you hoping to do in the future?** With the knowledge I have obtained here at Callywith, I would love to be a property manager in the future.

● **What advice would you give future students?** Take all the opportunities here at Callywith while you can.



“

**CALLYWITH
IS FULL OF
OPPORTUNITIES
AND UNIQUE
COURSES**

T LEVEL EDUCATION & EARLY YEARS

● **Why choose this course?** If you have an interest in education and early years, then this T Level may be the right course for you. In addition to your college studies, you will undertake a placement within a childcare/education setting for a minimum of 45 days.

● **What will I learn?** In 2024, the Education pathway and Early Years pathway will be offered. These pathways will consist of studying core topics to gain knowledge and understanding, an industry placement and occupational specialist topics. Core topics include: an overview of childcare and education (0-19), child development, supporting education, safeguarding, health and safety and wellbeing, behaviour, observation and assessment, equality and diversity, Special Educational Needs and disability, English as an additional language, parents, families and carers, working with others and reflective practice. Students will study and be assessed on occupational specialism topics.

● **Where will it take me?** On successful completion of the Technical Level 3 Certificate in Childcare and Education, you will be ideally placed to seek employment in a variety of roles, such as a children's centre worker, nursery nurse, nanny, teaching assistant, or learning assistant. Alternatively, you may continue on to higher education courses in Early Years and Family Studies, or Primary Teaching.

See page 30 for entry requirements



LEVEL 3 EXTENDED DIPLOMA CREATIVE MEDIA PRODUCTION & TECHNOLOGY

● **Why choose this course?** The media is a powerful entity that plays a significant role within society. The centrality of the media to human experience - from the conduct of everyday life to the exercise of power, to the creation of culture - is inescapable. We live in an intensely mediated world, as philosopher Marshall McLuhan famously said, "The Medium is the Message."

● **What will I learn?** The course provides an opportunity for you to engage with a diverse range of media - TV, filmmaking, radio, animation, photography, graphic design, social media, marketing - often in the form of 'live' or 'real-world' briefs and assignments where you will explore, develop and test your creativity within a stimulating and demanding environment.

The course will provide you with opportunities to develop and utilise broad, transferable skills through encouraging an ethos of personal and professional development.

● **Where will it take me?** This course is about progression: it is designed to build up your portfolio of work and provide you with the knowledge, skills and understanding necessary to enable you to apply to a higher education course, or gain employment in the exciting and dynamic creative media industries.

CHECK IT OUT. SEE THE STATE-OF-THE-ART CAMPUS AND FANTASTIC FACILITIES THROUGH OUR 360° INTERACTIVE CAMPUS TOURS.



LEVEL 3 EXTENDED DIPLOMA GAMES, ANIMATION & VFX SKILLS

- **Why choose this course?** If you want to make your passion for gaming into a career this is an exciting opportunity to study and develop your skills in three key industries.
- **What will I learn?** The Diploma covers all the fundamental skills required in art, animation, visual effects, games design, principles of 3D design, visual scripting and knowledge of the ecosystem of the industries. The Extended Diploma develops more sophisticated technical skills, industry working practice, project and production management including the common practice of Agile and Scrum techniques, as well as the opportunity to engage in specialism pipeline workflows of pre-production design, development production and post-production refinement. Both years incorporate a Final Major Project, where you write your own briefs which build into a professional portfolio for university and career progression.
- **Where will it take me?** A clear understanding of how the games, animation and VFX industries work in practice and experience of working to a specific industry brief in a way that replicates industry methods of project management, will ensure that any learner choosing to progress their learning and career path through a Higher Level Apprenticeship or a Degree Apprenticeship will be able to start work immediately, without necessarily requiring any industry understanding preparation programme.

MEET THE TEAM Q&A

SAM WILLS IT AND GAMES, ANIMATION & VFX SKILLS LECTURER



- **What is your background in education?** Following A Levels at Truro College and studying Games Development at Penwith College, progressed onto Falmouth University to study Computer Science and Games Development. Overall, my journey has been one of flexibility, bouncing from programming to art, psychology, and design, all contributing to the better problem-solving skills and sources of game design inspiration.
- **What does your role involve?** I support students in their desire to become artists, game designers and IT professionals. These industries have captured the attention of the world, with an explosion of lucrative and evolving positions to respond to emerging technologies and interest. These skills taught are transferrable to a range of industries including architecture visualisation, graphics design, advertising, games development, etc. I guide students through workshops in games engines such as Unreal Engine 5, to build 2D and 3D games, where students are encouraged to incorporate their own ideas. These games are then developed through asset creation in 3D software such as 3Ds Max and textured using Substance Painter.
- **What about working at Callywith College do you enjoy the most?** Callywith College is a wonderfully supportive place for staff and students alike. With a dedicated student support team, students are given the personal and academic support to ensure the best experience.
- **What advice would you give students considering applying for IT and Games at Callywith College?** Consider what personal skills and goals you would like to set for yourself. By reviewing your current skill set and opening yourself up to learning something that may be challenging but ultimately rewarding and taking on board all the feedback you receive, this will set you up for success and personal satisfaction. Your time at Callywith College is a time of new beginnings and personal growth, so if you are unsure of your aims and ambitions, your lecturers will be there to assist and guide you.

MEET THE STUDENT

Q&A

KIERAN FINNEGAN-VYSE

Kieran is from Liskeard and studies the Health and Social Care Level 3 Extended Diploma. He also runs the the British Sign Language Club. Kieran was previously home schooled.

“

IT'S SUCH A
SUPPORTIVE AND
ENCOURAGING
PLACE, WITH
REALLY AMAZING
LECTURERS

● **Why did you choose Callywith College?** My brother studied at Callywith before I arrived, which encouraged me to choose the College due to how highly he spoke of the available services and level and quality of the teaching.

● **What do you enjoy most about your course?** My course has been really fun. I have enjoyed the diverse topics of the units on my course, including anatomy and physiology, psychological perspectives, and much more. A memorable part of the course was my work placement with Hft Cornwall who support people with learning disabilities, where I now work.

● **What's Callywith like?** Callywith for me has been such a supportive and encouraging place, with really amazing lecturers.

● **What are you hoping to do in the future?** I will be going to Bristol UWE to study psychology.

LEVEL 3 EXTENDED DIPLOMA HEALTH & SOCIAL CARE - HEALTH STUDIES

● **Why choose this course?**

Are you interested in working in a health care setting? A career in health care is challenging, rewarding, interesting and exciting, requiring you to have a variety of skills, knowledge and expertise to succeed.

● **What will I learn?** This course will provide you with a broad scientific base and an opportunity to study health care issues. You will need to prepare to work hard independently, carry out in-depth research and use a variety of information sources. You will study modules in Psychology, Working in the Health Care Sector and Human Anatomy. You will have the opportunity to undertake a work placement (a mandatory part of the course) in a variety of settings including hospitals, dentists, early years settings, residential homes for the elderly and day centres for clients with mental health problems or learning disabilities.

● **Where will it take me?**

Successful completion of the course allows entry into higher education, including Nursing and Midwifery degrees and/or employment or training in the health sector. Students can also progress into nutrition, dental nursing and other allied health care professions including OT, paramedicine and health care assistants.



LEVEL 3 EXTENDED DIPLOMA HEALTH & SOCIAL CARE - SOCIAL CARE

● **Why choose this course?** Are you interested in working in social care? This career is challenging, rewarding, interesting and exciting, requiring you to have a variety of skills, knowledge and expertise to succeed. This course will provide you with a broad scientific base and an opportunity to study social care issues.

● **What will I learn?** An experienced team of lecturers, many of whom have worked in the health and social care profession, will support your learning. You will study modules in Sociology, Working in the Social Care Sector, Psychology and Equality and Diversity.

You will need to prepare to work hard independently, carry out in-depth research and use a variety of information sources. You will have the opportunity to undertake a work placement (a mandatory part of the course) in a variety of settings including hospitals, dentists, early years settings, residential homes for the elderly and day centres for clients with mental health problems or learning disabilities.

● **Where will it take me?**

Successful completion of the course allows entry into higher education, including Teaching, Social Work, Psychology, Youth Work degrees and/or employment or training in the care sector.

See page 30 for entry requirements

LEVEL 3 EXTENDED DIPLOMA INFORMATION TECHNOLOGY

● **Why choose this course?** If you enjoy learning about computers and information technology, then this course will be of great interest to you.

● **What will I learn?** Covering a diverse set of subjects, you will study modules in IT Systems, Programming, Cyber Security, Website Development, Games Development, Creating Systems to Manage Information, Using Social Media in Business, Data Modelling, The Internet of Things, Digital 2D and 3D Graphics, IT Service Delivery and IT Project Management. By the end of this course, you will be confident in planning, designing and writing computer programs, building websites and developing mobile phone apps. You will understand how to configure and protect an IT system from attack. You will be able to describe the impact that IT systems are having on our world and how businesses are using the latest technologies to gain a competitive edge.

● **Where will it take me?** You could continue on to computing and IT related degree courses at university, such as Computer Science, Computer Forensics, Game Development, Software Development, Cyber Security, 2D and 3D Graphics, IT Management and Systems Administration and Artificial Intelligence.

[See page 30 for entry requirements](#)

LEVEL 3 EXTENDED DIPLOMA PERFORMING & PRODUCTION ARTS

● **Why choose this course?** This course is designed to provide you with the knowledge, skills and understanding necessary to access and progress to degree level study or employment in the performing arts. It provides an opportunity to explore, develop and test your creativity within a qualification structure which is stimulating, demanding and provides a supportive transition from general to more specialised study.

● **What will I learn?** You will learn a vast array of skills including how to develop and deliver a performance; how to convey a message through a performance and how to critically examine the influence of historical and contemporary influences. You will also have opportunities to explore activities and competencies within the performing arts, encouraging a personal dialogue in terms of ambitions, preferences and future progression opportunities. You will take increasing responsibility for your own learning and ambitions.

● **Where will it take me?** This course can equip you for progression onto a university or drama/stage school degree. If you do not wish to go into Higher Education you may be able to go into employment in an area of the performing arts, whether it be as a trainee or apprenticeship in backstage operations with a theatre company, front of house or teaching assistant.

LEVEL 3 EXTENDED DIPLOMA UNIFORMED PROTECTIVE SERVICES

● **Why choose this course?** This course has been developed in consultation with academics and employers to ensure that it supports progression to higher education. Employers from the uniformed protective services sector have also been consulted so that the qualification content is appropriate and consistent with current practice for those who choose to enter direct employment in the sector.

● **What will I learn?** The course content will help to develop essential skills and knowledge, such as research, presentation, and report-writing. The building of confidence, through understanding and improving ability in outdoor activities, physical fitness, discipline, teamwork, and communication is a core aim. The demonstration that sensitivity and openness are equally important assets when working with diverse groups is also explored. The course will develop career aspirations, with trips to military bases, fire stations, police stations, universities, multi-day expeditions and various guest speakers from relevant industries.

● **Where will it take me?** This qualification is recognised by universities as providing the admission requirements for many relevant courses. The course also develops the individual for direct progression into employment, including uniformed protective services such as the armed services, the emergency services, and the prison service.

MEET THE STUDENT

Q&A

AMY THOMAS

Amy is from St Austell and studies the Uniformed Protective Services Level 3 Extended Diploma. Amy is also taking the Duke of Edinburgh (DofE) Award. She previously attended Bodmin College.

● **Why did you choose Callywith College?** I chose Callywith as it is a new college with a smaller campus which is much easier to ease into. I also heard great feedback and it's close to home.

● **What do you enjoy most about your course?** I enjoy the course as I get to complete my assignments which count towards my A Level throughout the year rather than a test at the end of my final year.

● **What's Callywith like?** Callywith is a great campus with so many different opportunities and different academies to choose from, it feels really friendly and I look forward to coming into College.

● **What are you hoping to do in the future?** I'm looking at joining the fire service as an on-call firefighter or maybe going to uni straight after college to look into more depth in the protective services.



“

CALLYWITH IS A
GREAT CAMPUS
WITH SO MANY
DIFFERENT
OPPORTUNITIES



“

ACADEMIES ARE A GREAT WAY TO BUILD NEW SOCIAL GROUPS AND FRIENDSHIPS

MEET THE STUDENT

Q&A

RACHEL HICKS

Rachel is from Camelford and studies the Sport Level 3 Extended Diploma. Rachel also takes part in the Netball and Rugby Academies. She previously attended Sir James Smith's School.

● **Why did you choose Callywith College?** I had heard great things about Callywith from people I went to school with. When I came for a tour and all the lecturers I met made me feel really welcome. I enjoyed the atmosphere, and I felt the size of the College was perfect especially for building friendships.

● **What do you enjoy most about your course?** The lecturers work hard with the students to help them with exams and assignments but also keep it fun.

● **What's Callywith like?** Callywith is great. It's a really inviting environment that always encourages students in the best ways.

● **What are you hoping to do in the future?** In the future, I hope to be doing a career in sport. At the moment, I'm looking at sport rehabilitation or psychology for athletes in rugby.

● **What advice would you give to future students?** I would suggest joining academies. It's a great way to build up new social groups and friendships. I would also recommend staying on top of work, otherwise it builds up and becomes overwhelming. And if anything were to go wrong, always talk to a teacher about it as they can understand and give you help.

LEVEL 3 EXTENDED DIPLOMA SPORT

- **Why choose this course?**

This course includes elements of both theory and practical sport and will allow you to investigate the diversity within sport, health and the leisure industry. The course will particularly suit you if you enjoy learning in a practical environment, but will also stretch you academically.

- **What will I learn?** The course will teach you to apply your sporting knowledge, as well as test your practical ability, by covering a range of units including Anatomy and Physiology, Professional Development, Sports Coaching and Leadership, Fitness Testing and Programming, Sports Development and Practical Sports Performance. Classes are taught through classroom lectures, group discussions as well as a variety of practical sessions using the extensive facilities at the College, including a purpose-built sports hall and 3G AstroTurf pitch. There are two externally assessed units in each year marked by the exam board. The remaining units are internally set and assessed by the lecturers. All your work counts towards your final grade profile.

- **Where will it take me?** This course prepares you for both employment and progression onto higher education courses. Common career paths include sports coaching, teaching, strength and conditioning coach, sports therapist and personal trainer.



LEVEL 3 EXTENDED DIPLOMA TRAVEL & TOURISM

- **Why Choose this Course?** If you want to work in the world's fastest growing industry, providing over 330 million jobs, then studying Travel and Tourism will help you take off on your journey. You will learn about every aspect of the industry, as well as gain valuable enterprise and employment skills to prepare you for your future aspirations.

- **What will I learn?** The course will give you an insight into the world of travel and tourism including the importance of the UK and global destinations and the transport industry. You will learn about working overseas and develop the skills required of a holiday representative.

You will also learn about specialist tourism and how sustainability is influencing the industry from a local to global scale. You will develop your understanding and demonstrate key business skills including customer service and marketing, how to plan for a travel enterprise and organise events. Although most of the course is assessed internally, there is some examination content in Year 1 of the course.

- **Where will it take me?** Successful students progress to higher education, studying International Tourism Management and Events Management or may choose to specialise in more specific areas of Tourism such as Sustainable Tourism Management. Since the course equips learners with a wide range of skills, other students find employment or apprenticeships in hospitality, tourist attractions and a wide range of other businesses.

See page 30 for entry requirements

WHY CHOOSE ACADEMIES AT CALLYWITH COLLEGE?

1 More of what you love. Academies are open to all students and are included in your timetable.

2 They encourage development and excellence and can offer additional breadth to your studies.

3 The skills you acquire will stay with you as you progress to university, your career and into life as an enriched individual.

ACADEMIES

PLEASE NOTE THAT ACADEMIES CAN ONLY BE JOINED
IN CONJUNCTION WITH A FULL-TIME PROGRAMME OF STUDY.

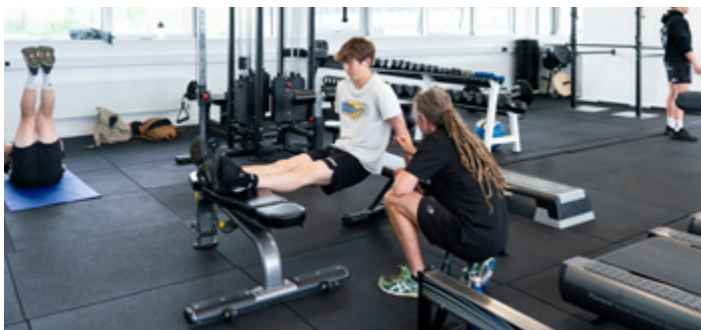


70



See more academy details online:
callywith.ac.uk/academies

As a full-time student, you could join one of our academies. These have been set up to encourage development and excellence. Whether your interest is sporting, academic or artistic, we have created programmes and support to help you excel.



As part of any academy you can expect to enjoy success during your time at Callywith College, but the skills you acquire will stay with you as you progress to university, a career and into life as an enriched individual. Academy activities are included into your timetable, enabling you to access as much as possible without interfering with your studies.



“ The sports academies are a fantastic opportunity to train and play competitive sport within your College day. Whatever your interest, the academies allow you access to experienced members of staff who can aid your development and support your future goals. ”

Julie Penprase
Sport and Business
Programme Team Leader



ACADEMIC ACADEMY

● **Why choose this academy?** Do you enjoy being introduced to new ideas, or want to learn about topics beyond the curriculum? If so, the Academic Academy is for you!

● **What can I expect?** The Academic Academy is a 25-week programme of lectures and seminars designed to stretch, challenge and provide support for students who want to apply for competitive universities. It is taken alongside your full-time programme and only requires a commitment of one hour a week. The programme is fun and exciting and aims to increase your intellectual curiosity and confidence. You will be introduced to new ideas and different ways of looking at the world. Lectures are held every Wednesday afternoon.

Presentations are given by a combination of College staff and invited external guests. Previous speakers have included a Forensic Clinical Psychologist and a PhD student working at the University of Exeter. Lectures are cross-curricular and cover a range of topics including science, the arts and cultural topics.

The Academic Academy is aimed at students who are excited by new ideas and by the opportunity to be stretched intellectually.

DISCOVER MORE AT AN
OPEN EVENT. SEE THE
INSIDE BACK PAGE FOR
DETAILS.



BASKETBALL ACADEMY

● **Why choose this academy?**

Players of all abilities are welcome in the Basketball Academy where you will be able to train in our sports hall and gym to develop your basketball ability and improve your game related fitness.

● **What can I expect?**

Players will have up to four hours a week of basketball related activities, which will include skills work, fitness sessions, match play training, and competitive matches on a Wednesday afternoon.

The College will look to arrange local friendly fixtures and, if available, teams will be entered into leagues, cups and tournaments. Players may also be given the chance to develop leadership, coaching and officiating skills through additional qualifications and experience in local schools and clubs.

DIGITAL ACADEMY

- **Why choose this academy?**

If you're passionate about the digital world, then this academy may be for you.

- **What can I expect?** Throughout the year, we will provide opportunities for you to work on a variety of projects to enhance your digital skills and develop valuable soft skills. Potential projects include a near space mission, creating a college weather station, interacting with the latest AI models using our dedicated AI computers and creating new computer hardware using a 3D printer. We're keen to respond to any ideas or ambitions that students may have to develop your computing skills even further. It's your academy and you can help choose its direction.

The intention of this academy is to provide you with ways of developing your digital skills in a fun and practical way. The activities you choose to complete, will give you the opportunity to really challenge and extend your skills in many areas. Completion of projects provides practical experience that can really help you stand out when applying for jobs, apprenticeships, or university.

CHECK IT OUT. SEE THE STATE-OF-THE-ART CAMPUS AND FANTASTIC FACILITIES THROUGH OUR 360° INTERACTIVE CAMPUS TOURS.



ESPORTS ACADEMY

- **Why choose this academy?**

Not only is this academy a great opportunity to meet new friends who also share your enjoyment of gaming, you will develop a whole range of valuable soft skills prized by employers including effective teamwork, communication skills, leadership, management, strategy and resilience. Games are played on modern, dual screen, purpose-built gaming computers capable of achieving the highest graphical settings at rock solid framerates.

- **What can I expect?** There will be try-outs at the start of the year to decide the teams. Non-playing roles such as Team Manager will also be available.

The games played will be confirmed by the national body British Esports Association in September. Previous games have included Overwatch, League of Legends and Rocket League with more being added each year. Fixtures are weekly against other colleges across the country. The grand finals are held at the Insomnia Gaming Festival at the NEC in Birmingham.

FOOTBALL DEVELOPMENT PROGRAMME - MALE

● **Why choose this academy?** The Football Development Programme will provide the opportunity to take part in a comprehensive football programme designed to develop you physically, technically and psychologically.

● **What can I expect?** Players will have up to five hours a week of football-related activities, which will include theory sessions, coaching, fitness sessions, skills work, post-match analysis and competitive matches on Wednesday afternoons. All students will have the opportunity to train on the purpose-built, all weather 3G pitch and compete for a place in one of our four teams. There may also be the opportunity to access recreational football through the HWS programme.

The College expects to enter the first and second team into the Association of Colleges South West league and cup competitions, with the third and fourth team playing in the county participation league, as well as playing in friendly fixtures. There should be over 15 games per season depending on the level of team and success in the cups. Players will also be given the chance to develop leadership, coaching and officiating skills through additional qualifications and experience in local schools and clubs.



FOOTBALL DEVELOPMENT PROGRAMME - FEMALE

● **Why choose this academy?** Players of all abilities are welcome in the Female Football Development Programme where you will be able to develop your football ability and improve your game related fitness.

● **What can I expect?** Players will have up to five hours a week of football related activities, which will include skills work, fitness sessions, match play training, and competitive matches on a Wednesday afternoon.

The College will look to arrange local friendly fixtures and, if numbers allow, a team will be entered into the AOC league, cup and tournaments. Players may also be given the chance to develop leadership, coaching and officiating skills through additional qualifications and experience in local schools and clubs. There are possibilities of progressing onto Apprenticeships in football coaching and scholarships to universities in the USA.

HIGH PERFORMANCE ACADEMY

● **Why choose this Academy?** The High Performance Academy offers specialist training and support to exceptional athletes who compete as individuals within their sporting arena.

● **What can I expect?** This academy will complement existing training taking place within a club or squad setting, by helping to develop an athlete's functional movement skills, strength and conditioning, to help create the 'whole' athlete.

This academy will focus on providing the opportunity to access outstanding functional movement advice, focusing on sport specific based biomechanics, whilst delivering expert strength and conditioning programmes to help athletes reach their potential. The academy will also offer support to athletes who may be in the process of recovering from injury by carrying out rehabilitation and recovery programmes.



HOCKEY ACADEMY

- **Why choose this academy?**

Players of all abilities are welcome to attend the male/female Hockey Academy where you will be able to develop your hockey ability and improve your game related fitness.

- **What can I expect?**

Players will have 2 hours a week with sessions running on Tuesday and Thursdays of hockey related activities, which will include game-based drills, skills work, fitness activities and competitive but friendly local matches (numbers dependent).

Players will also be given the chance to develop leadership, coaching and officiating skills through additional qualifications and experience in local schools and clubs.



GET CONNECTED.
SEE MORE OF COLLEGE
LIFE ON SOCIAL.

MEET THE TEAM

Q&A

TIM NIXON

PE/SPORT LECTURER
& FOOTBALL ACADEMY
COACH



Tim, who undertook his teacher training (Post-16 PGCE) at Truro College, is involved in the delivery of the Level 3 Extended Diploma in Sport and A Level Physical Education at Callywith College. In addition to this, Tim is the Football Academy Coach.

- **What inspired you to pursue a career in education?** PE was always my favourite lesson at school and I competed in a wide range of sports growing up such as football, rugby and athletics. Sport has played a huge role throughout my life and I continued my studies in sport at further and higher education. I wanted to pursue a career in sport since an early age, however it wasn't until I was at university that I realised it was within education. I thoroughly enjoyed the university experience at Cardiff Metropolitan and at Truro College, where I studied to become a PE/Sports Lecturer in further education. I find teaching the 16 - 19 age group very rewarding as I am able to shape young people's futures, and I hope to continue teaching PE/sport in further education throughout my career.

- **What part of working at Callywith College do you enjoy the most?** I have enjoyed being part of the team since the very start and helping to develop the sports provision at the College. The staff are friendly and helpful and everything about the College is exciting as we continue to grow. I particularly enjoy being able to teach/coach on our fantastic sporting facilities such as the 3G pitch and sports hall.

- **What advice would you give students considering applying for Sport at Callywith?** Go for it! Callywith College is an exciting opportunity for your further education studies in Cornwall, where you will be able to experience our fantastic sport facilities with experienced members of staff who deliver a variety of courses to suit your interests.

LAW ACADEMY

● Why choose this academy?

If you have an interest in pursuing a career in the legal profession, or are simply fascinated by how the law operates within society, then this is a great opportunity to explore your interest further. And if you'd like the opportunity to flex your legal knowledge in a real courtroom then this is the academy for you!

● **What can I expect?** Expect a mixture of discussion and debate, videos, teamwork activities, guest speakers and trips to explore the world of Law from a range of angles. You will have the opportunity to take part in the Bar Mock Trial Competition working as part of a team to prepare roles for mock court cases and competing against other teams in the region. This is an exciting and challenging way to gain an insight into how the legal justice system works and meet judges and barristers.

Additionally, there will be opportunities to learn about career routes through guest speakers and visits (e.g. local courtrooms and police headquarters). Other sessions will focus on the reasons why people offend and the success (or otherwise) of post-conviction rehabilitation, the legal processes we use to catch offenders (forensics, eyewitness evidence and interview techniques) and consideration of human rights in the UK and across the world.

MEDICS' ACADEMY

● Why choose this academy?

If you are considering a career in any health care role such as radiology, physiotherapy, medicine, veterinary or dentistry, then the Medics' Academy is for you. Making a successful application to the highly competitive university courses that lead to these professions is a long and potentially difficult process. In addition to the large range of destination choices, there are a whole range of entrance tests, work experience requirements and application scoring systems that need to be understood. While it is possible to succeed without the academy, learning to understand the system will really help.

The Medics' Academy is taken in addition to our A Levels or an Extended Diploma and will support students to build the necessary skills and experience to succeed. It is a fun and interactive programme that is designed to confirm your interest in these challenging careers and inspire you to achieve your goals.

● **What can I expect?** Medics' Academy sessions will take place on Wednesday afternoons and will predominantly be delivered at Callywith College, although some sessions may take place off-site. Sessions involve guest lectures, practical workshops and tutorials that enhance students' knowledge of the health care professions. Sessions also support students with the application process and interview preparation. The programme utilises links with Exeter Medical School, the RCHT, local GPs and other health care professionals.





NETBALL ACADEMY

- **Why choose this academy?**

Players of all abilities are welcome in the Netball Academy where you will be able to play fixtures and train in our sports hall and fitness suite.

- **What can I expect?** Players will have up to five hours a week of netball-related activities, which will include skills work, fitness sessions, match play training, post-match analysis and competitive matches on a Wednesday afternoon. The College expects to enter the first team into the Association of Colleges South West league and cup competitions, with the second and third team playing in the county participation leagues, cups and tournaments, as well as playing in friendly fixtures.

There should be over 15 games per season depending on the level of team and success in the cups. Players will also be given the chance to develop leadership, coaching and officiating skills through additional qualifications and experience in local schools and clubs. There may also be the opportunity to play recreational netball through the HWS programme.



RUGBY ACADEMY - MALE

- **Why choose this academy?**

The Rugby Academy caters for a range of abilities, providing the opportunity to play in all formats of the game including touch, 7's, 10's and 15 a side.

- **What can I expect?** Players will have up to five hours per week of rugby related activities, which will include coaching sessions, video analysis, fitness sessions, weight training and competitive matches on a Wednesday afternoon. The College expects to enter the Association of Colleges South West league and cup competitions, as well as local county and regional tournaments and friendly fixtures.

There may also be the opportunity to travel further afield to national competitions like the National Schools 7's at Rosslyn Park. Players will also be given the chance to develop leadership, coaching and officiating skills through additional qualifications and experience in local schools and clubs.

RUGBY ACADEMY - FEMALE

- **Why choose this academy?**

Players of all abilities are welcome in the Female Rugby Academy where you will be able to develop your rugby ability and improve your game related fitness.

- **What can I expect?** Players will have up to five hours a week of rugby related activities, which will include skills work, fitness sessions, match play training, and competitive matches on a Wednesday afternoon. As women's rugby is a developing sport, the College academy programme is dependent on the numbers recruited each year, so if you love rugby, join with your friends.

When numbers allow, the College will enter the Association of Colleges Sport League and cups as well as festivals, friendly matches and tournaments at 15s, 10s and 7s. Players will also join other colleges across the South West to train and play a number of barbarian style festivals and fixtures. Players are also given the opportunity to represent the College at a South West Colleges level and are encouraged to play in the county and regional set up within the Rugby Football Union.

THE LOW DOWN

INFORMATION FOR NEW STUDENTS AND PARENTS

STUDENT LIFE & OPPORTUNITIES

Enrichment Opportunities

In addition to your course and as part of your timetable, you can choose from a range of enrichment opportunities offered throughout the week. As well as adding to your CV or university application, these can give you a break from your studies and enable you to meet people from other courses.

You can follow an activity that complements your existing study or use it to discover something entirely new. There are many activities you can choose from including the Extended Project Qualification (EPQ), Culture Cafe and Creative Writing, multiple support groups, plus the opportunity to gain work experience. If we don't offer an activity that interests you, let us know and we'll see if we can add it to the programme.

Work Experience

All first year students will be required to arrange and complete a work experience placement as part of 'Your Future Week' in June. The process is supported by your Personal Development Tutor and the Work Experience Coordinator.

Callywith Active

Callywith College is committed to providing an environment where students can grow and develop by offering a wide range of free physical activities across the College through our Callywith Active student programme. The menu of activities which fit around student timetables, include gym sessions, basketball, badminton, table tennis and astro pitch activities. The gym sessions take place in our new Fox Gym where our Callywith Active Lead, who is Master Practitioner in Personal Training, will be available to offer students guidance and advice on planning gym sessions and how to exercise in the most appropriate way for them to achieve their goals.

The menu of opportunities is fully inclusive and has been established for all students to access regardless of their ability, previous experiences and goals. The programme is provided to support positive mental health and physical wellbeing, and to help create healthy active lifestyles.

The Duke of Edinburgh's Award

The Duke of Edinburgh's Award is universally recognised as one of, if not the best, programme for the personal development of young people. If you participate in the award you will experience an enjoyable, challenging and rewarding programme of personal development. Taking part builds confidence and develops self-esteem. It requires persistence, commitment and will have a lasting impact on your attitudes and outlook. On the DofE programme you will complete different types of activities to achieve an award e.g. volunteering, physical, skills, expedition and residential.

Ten Tors

Ten Tors takes place every year on Dartmoor. All those who attempt Ten Tors will undoubtedly remember it for the rest of their lives and for many it will be a life-changing experience. We will train you during the course of the year to allow you to take part in the Ten Tors 45 Mile challenge in May. Its tough, and it will push you mentally and physically - you will learn so much about yourself!

The National Citizen Service (NCS)

NCS is designed to boost not only your career prospects, but also to develop valuable life skills needed in your studies and future careers. During the programme, you will take part in a range of activities that will develop your skills in teamwork, leadership and event planning, amongst others. You will plan, design and deliver a social action project on a local issue that you feel most passionate about, in order to give something back to your community.

Campus Life

As you can see, there are many chances for you to thrive, explore, develop and learn, but some days you may just like to enjoy campus life, meet your friends and relax in one of the cafés and outdoor areas around the campus.

Academies

As a full-time student you could join one of our academies. These have been set up to encourage development and excellence in a wide range of sports as well as academic study and for those interested in the medical profession. Academy activities are included in your timetable enabling you to access as much as possible without interfering with your studies. Find out more on page 74.

Creative Arts

If you have an interest in the creative arts you may be able to contribute to one of the many performances or exhibitions throughout the year, both at College and outside venues.

Fundraising

You may want to take part in some fundraising activities while at the College. You and your friends can select charities to support, for example Shelterbox, CLIC, Lamin Appeal, Heart Foundation, Breast Cancer Care, Cancer Relief, Comic Relief and Children in Need. Fancy dress, hair dyeing and shaving are just some of the antics you could be involved with in order to raise funds as well as the more formalised events such as Ten Tors, fun runs and marathons.

Geography students can take part in the annual visit to Eswatini for the Shewula Orphan Project, run in association with Truro and Penwith College. The Shewula Project is committed to building schools and providing education for AIDS orphans. All the money raised goes directly to support the orphans and it is the students themselves who decide which aspect of the project the money is used on. You will spend days in the orphan schools playing with the children and assisting in classrooms. In addition, the trip affords various stops to view the beautiful landscape and cultural sights of Eswatini.

Travel Opportunities

Travel opportunities exist either as part of your studies or for enrichment, with many offered in association with Truro and Penwith College. Our students have been far and wide with destinations including Toronto, London, Eswatini and Iceland.

There are also language exchange opportunities and local field trips.

Student Ambassadors

You can help us spread the word about the amazing experience you have at Callywith College to future students. You can become a student ambassador and gain experience visiting schools around the county, attending open events, as well as helping new students at the start of term.

Student Representation

Student representatives from all tutor groups advise the College management of educational and recreational matters that are of interest to students of the College. The tutor reps meet monthly with members of the senior management team to ensure issues are discussed and addressed in a timely way.

Student Council

Students will have the opportunity to put themselves forward for nomination to become part of the newly formed Student Council with a range of positions within the council on offer including Chair, EDI representative and social secretary to name a few.



THE COLLEGE CAMPUS & RESOURCES

The College Campus

Callywith College is a state-of-the-art, purpose-built campus designed to enhance your studies and give you the best possible learning experience. There are numerous subject-relevant labs, classrooms, art studios, IT facilities and a theatre and drama studio, to provide the standard of education you would expect from one of the top colleges in the country.

Our excellent facilities support a varied programme of performances, workshops and external classes across the College as a whole, which you will be able to access as part of your studies.

We have excellent sports facilities that you can access during the day including a well-equipped gym and sports hall for a range of sports and our new dual use football and rugby 3G AstroTurf pitch will no doubt play host to many of your outdoor sporting achievements.

Through our Learning Centres and IT suites, you will have access to a comprehensive range of contemporary books, journals, audio-visual and online materials that will provide inspiration for studying and improve your results.

Learning and leisure are blended successfully. There are cafés and social spaces across the campus to enable you to enjoy your time outside of taught classes.

Access

The buildings and facilities at Callywith College are accessible to all students. All parts of the College may be accessed by people with limited mobility and within the College there are lifts designated for their use.

Refreshments

Callywith College has dedicated eating areas in the Temple and Garrow buildings where a wide variety of reasonably priced meals, sandwiches, drinks and snacks are all available. Details of opening times and menus can be found on the Intranet. The College operates a cashless catering system or you can use a credit/debit card.

Learning Centres (Libraries & IT Suites)

The College has three Learning Centres across the campus. These are areas where traditional printed resources sit alongside our expanding electronic provision.

The open-access computers in each IT suite offer a wide range of software and there are staff available to support your use of the facilities.

Necessary books are provided by the College and must be returned in good condition. Students are asked to pay an enrolment fee. The Learning Centres hold relevant collections of books, journals, DVDs and CDs, and there is increasing electronic access to books, as well as online journals and databases via the College Intranet Virtual Learning Centre.

Information Technology

The College has a large number of computers capable of using an extensive range of software, available for students to use on a drop-in basis.

Students are expected to improve their awareness of, and skills in, information technology (IT). There are College IT champions who can advise you in your use of IT. The College has campus-wide Wi-Fi, which enables students to access the Internet and complete College work using their own devices. You will also have access to Office 365 accounts to allow learning to take place from anywhere in the world.

Art Shop

Many of the materials needed for your course should be available through the shop. Prices are very competitive.

SUPPORT SERVICES

Support given is wide ranging and any problems experienced by students during their course, either personal or academic, will be addressed as quickly as possible.

GCSEs & Functional Skills

All students yet to achieve GCSE Grade 4 or above in English and/or Maths will have to study an appropriate level course as part of their programme of study at College. This will be either GCSE or Functional Skills and will be determined by previous qualifications and an initial assessment. For students who have already achieved a Grade 4 or above there are opportunities available to improve to a higher grade. In many cases, progression opportunities will be dependent on achievement of English and Maths. Students can access this type of programme by speaking with their Personal Development Tutor.

Learning Services

At Callywith College, we offer a comprehensive support service to help students achieve their academic goals. Our Learning Resource Centres are a friendly and open environment that enables students to study at a pace and style of their choosing. Garrow Library is where you will find course textbooks as well as supplementary texts to enrich your learning. Garrow Library is a silent study area, we ask that voices are always kept to a minimum to allow those around you to study in peace. Temple Learning Resource Centre (LRC) is a quiet study area, we ask that voices are kept low, and we welcome collaborative work. To facilitate this, we have a comprehensive reference section, we ask that the books are not removed from this room to enable other students to benefit from the resources.

Special Educational Needs and Disabilities (SEND)

We can offer one-to-one support for identified high needs students, small group support, learning needs assessment on referral from lecturing staff and liaison with outside agencies. Appropriate provision is put in place for young people with Education, Health, and Care Plans (EHCPs) and that information is shared with lecturing staff so that they are able to cater for your requirements, helping you to effectively access your learning and enable you to achieve your very best.

Personal Development Tutor

You will be assigned a Personal Development Tutor who you will see weekly. Your tutor will get to know you well and will usually be the first person you go to if you need advice or help.

Students will have regular meetings with their tutor and will have contact with them at other times both in and outside the classroom.

Student Services

The Student Services team offer a wide range of services and pastoral support for any non-academic issues you may be experiencing, no matter how big or small. They are fully trained in trauma-informed approaches and welfare support and can help you with things such as mental health and counselling, careers and next step planning, finance and benefits, housing, sexual health, drugs and alcohol, relationships and more. They offer a mix of one-to-one and small group support depending on a student's needs, ranging from counselling and anxiety workshops through to our young carer and LGBTQ+ support groups. They also have a chaplaincy service and a therapy dog.

To find out more, please email studentservices@callywith.ac.uk or call 01208 224460.

Careers Guidance

We know that making decisions about your future can be a bit daunting. That's why we are committed to helping and guiding you through those all-important choices about what to do next. All students can discuss their personal progression routes and receive support in making decisions appropriate to their needs with a fully trained and dedicated L6 Careers Advisor. They can help with things like LMI information, CV writing, researching and applying for jobs, apprenticeships and university, interview techniques, mock interviews and more. A range of careers' resources including guidance, templates and software are available to all students via the college's SharePoint and through our tutorial programme.

There are also a range of careers related trips and events over the year which you can access, including visits to universities, apprenticeship shows and the UCAS fair, as well as more subject specific visits, guest speakers and other activities. To find out more, please visit our 'Careers Hub' at www.callywith.ac.uk/careers or email careers@callywith.ac.uk

Mental Health, Welfare & Counselling Support

We recognise the link between emotional wellbeing and achievement; therefore, we have our own on-site counselling service and Mental Health Advisor and work closely with external mental health agencies, such as CAMHS, when required. Mental health and emotional wellbeing are also key topics within our tutorial curriculum, designed to raise awareness and promote our positive mental health culture. Additionally, students can also talk to a member of the safeguarding team or their Personal Development Tutor.

Callywith College Bursary Fund

This fund is to assist students with travel and essential equipment. Applicants are means tested. An online bursary form can be completed at callywith.ac.uk/ transport

Attendance Advice

Advice is given by Personal Development Tutors on procedures to keep your attendance record accurate and up-to-date.

EQUALITY & SAFEGUARDING

At Callywith College, we recognise our duty to ensure arrangements are in place for safeguarding and promoting the welfare of young people and we carry out this duty through our teaching and learning, pastoral care and extended activities.

Equality of Opportunity

Callywith College is committed to meeting its duties contained in the Equality Act 2010. We aim to create a culture of inclusiveness and to challenge discrimination, taking positive action in order to remove barriers to the educational and personal progression of individual learners. To achieve this aim, the College will not tolerate unfair or unlawful discrimination.

The College's Equality, Diversity and Inclusion policy demonstrates that the College will seek to remove any existing barriers to all staff, students, trustees and visitors, irrespective of age, disability, gender reassignment, marriage or civil partnerships, pregnancy and maternity, race, religion or belief, sex and sexual orientation. Callywith College endeavours to promote an inclusive working and learning environment, which supports the individuals within its community irrespective of their background. The College aims to promote equality of opportunity by providing full and equal access to all students who can benefit from its provision, and by encouraging and enabling all members of the College to build and contribute to a society that values cultural and social diversity. A focus on learner voice and involvement in instigating change reflects this commitment.



The College achieved the Investors for Diversity in Schools Award in March 2023. This demonstrates the College's commitment to an all-encompassing approach to equality, diversity and inclusion.

Learning Difficulties & Disabilities

The College welcomes applications from students with learning difficulties and disabilities. Learning support and specialist equipment are provided as required.

Safeguarding Children, Young People & Vulnerable Adults

The College is committed to safeguarding and promoting the welfare of children, young people and vulnerable adults and expects all staff and volunteers to share this commitment. This means that we have a child protection and safeguarding policy and appropriate procedures in place. All staff, including visitors, volunteers and governors, must ensure that they are aware of these procedures.

Sometimes we may need to share information and work in partnership with other agencies, for example when there are concerns about a child's, young person's or vulnerable adult's welfare. We will always ensure that our concerns are discussed with parents/carers/next of kin first, unless we have

reason to believe that such a move would be contrary to the child's, young person's or vulnerable adult's welfare.

If students are concerned about their, or the safety of someone else, they can speak to the College's Designated Safeguarding Lead Jen Temple, Designated Safeguarding Lead Jamie Crowle or a member of the safeguarding by emailing safeguarding@callywith.ac.uk

Operation Encompass

We are proud members of Operation Encompass, a joint project between local schools, colleges and Devon and Cornwall Police. Operation Encompass is the reporting to schools and colleges, prior to the start of the next college day, when a child or young person has been exposed to, or involved in, any domestic incident.

Operation Encompass will ensure that a member of staff, known as a Key Adult, is trained to allow them to liaise with the police and to use the information that has been shared, in confidence, while ensuring that the college is able to make provisions for possible difficulties experienced by young people, or their families. Assistant Principal Jen Temple is our Operation Encompass Key Adult.

COLLEGE POLICIES & PROCEDURES

Your Application

Before you become a student at Callywith College, we aim to provide you with information about the courses we offer and the practicalities of being a student here. We will let you know about transport, finance, equipment and progression. If you have any additional needs, we will give you details of the individually tailored support you can expect at Callywith College.

Once you apply, you can expect us to process your application fairly and efficiently and, normally within four weeks of receipt of your application form, provide you with a date and time for an interview. The interview is a good opportunity for both you and the College to ensure you are choosing a course that is right for you and you have all the information you need. After your interview, a decision about a place at Callywith College can usually be made.

Student Life

Callywith College has very few rules, but both you as a student and all College staff work to ensure everyone has the most positive and beneficial experience possible.

When you start as a Callywith College student, we will give you a thorough induction. You will receive a lot of new information including details on learning resources, dates, security, health and safety, safeguarding, attendance, assignments and College rules, procedures and policies.

You will also be provided with this information by email, which will give you a record of all the information for you to refer back to.

As a student at Callywith College, you will accept more responsibility for your work and your progress than during your time at school. Many courses require you to work extensively on your own in College and at home. First-class study facilities are available in the College and successful students use these effectively. We will help you to organise your work, but you will be responsible for ensuring that you meet deadlines. The College requires that you attend regularly and punctually, and that you meet the demands of your course. We hope that you will enjoy your time at Callywith College and the staff at the College will work with you to help you achieve success.

College Day

The College day for full-time students will usually last from 9.10am to 4.20pm. Students will have more private study time than is the case with pupils in school.

Drugs, Alcohol & Smoking Policy

Callywith College does not condone the use of drugs or alcohol. We seek to educate students about drugs and alcohol-related issues and provide help to those who ask for it. The College has a no smoking policy except within the designated smoking areas.

Data Protection Act

Any information that you provide during the application process is protected under GDPR 2018.

Fees

If you are aged 16 to 18 years and a student under the age of 19 on 31 August, you will not normally be charged fees for tuition. Overseas students will be liable for fees and details will be available from the College.

Examination Fees

Full-time students who do not pay tuition fees would not normally be asked to pay for examinations that are taken as part of the course, with the College's approval. Students who pay tuition fees will need to pay.





YOUR JOURNEY TO COLLEGE

For the vast majority of students, travelling to College by bus is a great option. Public transport is an environmentally friendly and reliable way to get here. We understand that you may be anxious about travel, after all this might be a big change from your normal school journey, but rest assured that the bus service will get you to your lectures on time. Many of you will travel from all over Cornwall and so some journeys will take longer than you are used to. That's ok, you can use this time to study, relax and make friends. Wherever you are travelling from, your journey to Callywith College is the road to an inspiring future.

BUSES

The Callywith College bus pass provides travel on your nominated route into and out of college at the beginning and end of the College day, and also allows travel on any Go Cornwall bus outside of these hours, including evenings, weekends and holidays (excluding Central Plymouth).

Callywith students can now also use buses between Bodmin town centre, Bodmin Parkway Station, and the College during college hours free of charge using the Go Cornwall Mobile App - this pass must be applied for in the same way as a paid-for bus pass.

Students whose household income is less than £31,000, may receive a discount off the full cost of the bus pass. Please contact the College for up-to-date details.

For continuing students, it will be dependent on a minimum of 90% attendance during the previous term, as recorded on the College's MIS database.

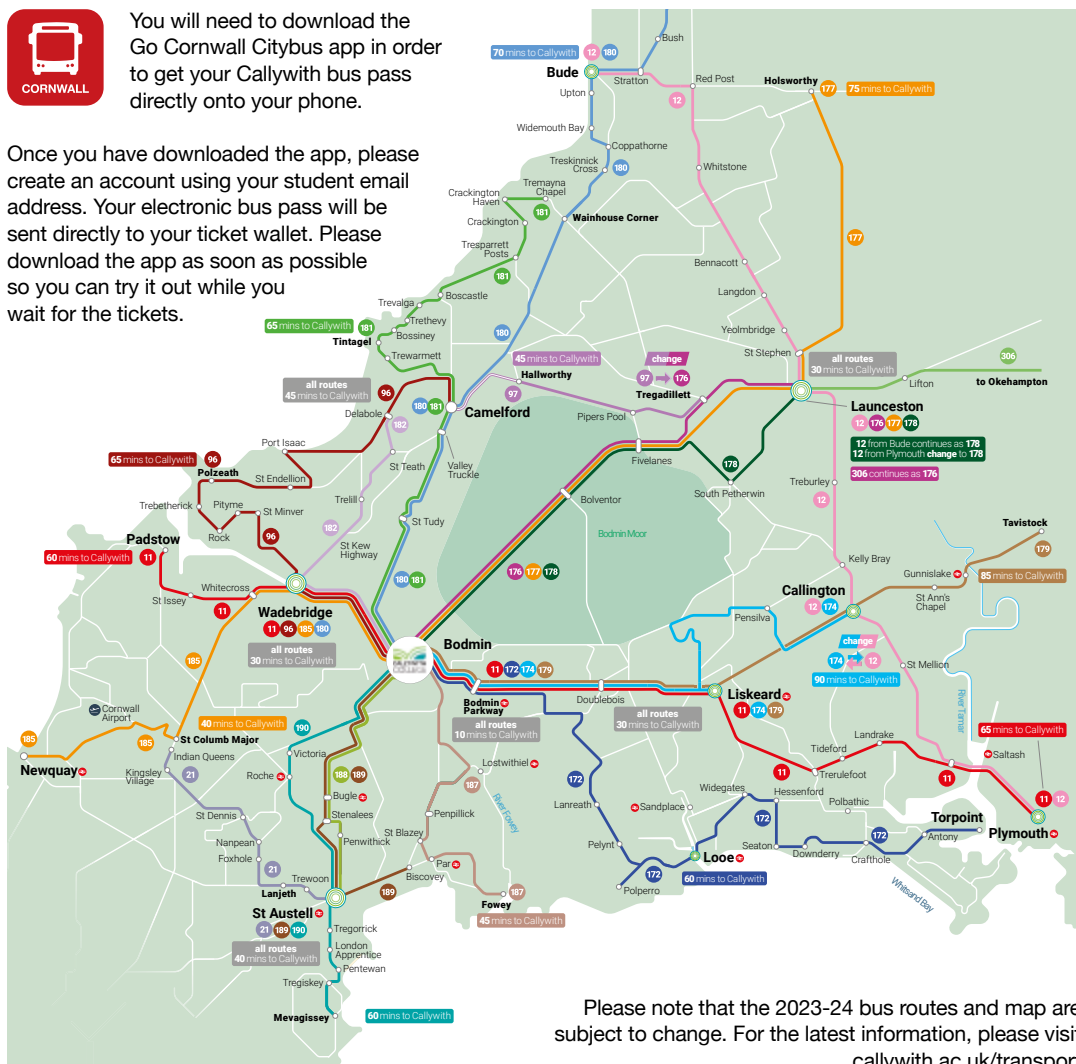
Details of our College services, timetables and any financial support available can be found at callywith.ac.uk/transport

All other Go Cornwall timetables for local services which can be used by students can be found at transportforcornwall.co.uk



You will need to download the Go Cornwall Citybus app in order to get your Callywith bus pass directly onto your phone.

Once you have downloaded the app, please create an account using your student email address. Your electronic bus pass will be sent directly to your ticket wallet. Please download the app as soon as possible so you can try it out while you wait for the tickets.



Please note that the 2023-24 bus routes and map are subject to change. For the latest information, please visit callywith.ac.uk/transport



SUSTAINABLE TRAVEL

CALLYWITH COLLEGE IS WORKING IN PARTNERSHIP WITH CORNWALL COUNCIL AND SUSTRANS (THE UK'S SUSTAINABLE TRANSPORT CHARITY - [SUSTRANS.ORG.UK](https://sustrans.org.uk)) TO PROMOTE ACTIVE, SUSTAINABLE TRAVEL TO COLLEGE AND TO REDUCE CONGESTION.

Choosing to travel on foot or by bicycle reduces air pollution and traffic congestion, while saving you money and keeping you fit. Using public transport also helps reduce your carbon footprint, so check out your travel options below and play your part in making Bodmin a better place to study.

Walking & Cycling to College

Walking or cycling is a simple, environmentally friendly and free way to fit exercise into your day. Recent improvements in Bodmin have made it easier to travel in these ways. A shared-use footway/cycle path connects the College to the town centre along Launceston Road and Priory Road. The town centre is only a 10-15 minute walk or cycle away, so why not beat the traffic and give it a try? This route can be found in the Bodmin active travel map - download the map at cornwall.gov.uk/activetravel

There is covered cycle storage at the campus and showers/changing facilities and a bike work station are available (shown on the cycle facilities map available on the College website).

Dedicated traffic-free routes serving the town's colleges are marked on the Bodmin active travel map cornwall.gov.uk/activetravel. Other traffic-free connections to College include the Camel trail from Padstow, Wadebridge and St Breward. Details of the cycle routes and trails that cross the county are available at cornwall.gov.uk/environment/countryside/cycle-routes-and-trails and sustrans.org.uk/national-cycle-network

Buses

Buses are a great, environmentally friendly way to get to College. We are continuing our partnership with Go Cornwall for 2023/24 to provide the College bus services. Please refer to the previous pages for details.



Trains

Frequent trains serve Bodmin Parkway station with connecting buses to Bodmin. Alternatively, why not bring your bike on the train and use the cycle routes between the station and the College (approximately 25 minutes' ride)? You'll need to make a booking for your bike if it's a high-speed train, non-bookable bike spaces are available on local trains.

Driving to College

Callywith College promotes the use of sustainable travel to get to your place of study. However, we recognise the fact that sometimes car travel is unavoidable. Carshare Cornwall provides a free service for passengers and drivers to link up and share car journeys.

Click on the 'cost calculator' oncarsharecornwall.com to work out how much you could save.

Students parking at Callywith College will need a Parking Permit which are available from Reception. To apply for a permit, students will need to provide copies of their drivers licence and insurance and are issued on a case-by-case basis. Parking Permits cost £30 per annum.



Image courtesy
of J Blewley/Sustrans

LIFELONG LEARNING

WITH PARTNERS, TRURO & PENWITH COLLEGE

FOUNDATION ART & DESIGN

The Foundation Diploma in Art and Design is an opportunity for individuals to develop their creative skills, explore a wide range of disciplines, learn new techniques and challenge their imagination. This course provides a year of practical study, enabling learners to make informed decisions about potential future prospects as an artist or designer, as well as possible applications to degree courses.

The course explores a broad range of creative ideas, starting with a series of workshops that include graphic design, illustration, painting, 3D, sculpture, photography, printmaking and textiles. As the year progresses, students will specialise in the area of their choice.

Entry Requirements

Students will normally be 18 years old when starting this course, having achieved A Level qualifications or an Extended

Diploma within art-based subjects. Mature students with or without formal qualifications are welcomed. All applicants are interviewed with a supporting portfolio of creative work.

For more information and an application form, please contact Truro College on 01872 305000.

ACCESS TO HIGHER EDUCATION

A great course for adults returning to education.

Truro College

Art & Design
Computing & IT
Creative Media & Photography
Engineering
Humanities, Teaching & Law
Medicine
Nursing & Human Sciences
Psychology & Social Work
Science

We are committed to lifelong learning. By studying with Callywith College you can progress on to Higher Education degrees, foundation degrees, HNDs, education qualifications or a Foundation Art & Design course. Our partner, Truro and Penwith College, offers a range of Part-time Courses, Business Services and Higher Education opportunities accessible to all ages. If you are returning to education, the Access to Higher Education courses provide an ideal progression route.

Penwith College

Creative Arts
Humanities
Health & Social Care

In preparation for higher education, students complete core units, such as study skills, as well as subjects relating to their chosen pathway.

Access to Higher Education courses are designed to give students the necessary grounding to succeed in higher education. The majority of British universities will accept Access to Higher Education courses as an alternative to A Levels and other more traditional routes. Students are usually aged 19 or over at the beginning of the course and all applicants will be expected to attend an interview. Courses normally start mid-September and finish at the end of May. Taught hours will be approximately 15 hours per week depending on the pathway chosen. Courses usually run over three days per week (9.15am to 4.15pm) to offer flexibility.

For a leaflet, please contact Truro College on 01872 305000 or Penwith College on 01736 335000.

HIGHER EDUCATION

Local University Courses with both full-time and part-time routes are available at Truro and Penwith College.

Do you want to gain a full degree, a foundation degree or an HNC/D? If so, the College offers a wide range of University Courses delivered in a friendly environment with excellent teachers and modern facilities. You will be taught in small groups and receive significant personal support from our team of tutors and support staff.

Top-up degrees: BA (Hons) Applied Media, BA (Hons) Business, Enterprise and Leadership, BA (Hons) Education and Training, BA (Hons) Human Behavioural Studies, BA (Hons) Silversmithing and Jewellery, BSc (Hons) Applied Computing Technologies, BSc (Hons) Applied Social Science, BSc (Hons) Applied Sport and Health Science, BSc (Hons) Archaeology.

Foundation degrees & HND/C:
Subject areas include: Art Practice, Business and Law, Computing and IT, Education, English, Humanities, Media and Photography, Science, Social Science, Sport and Health, Initial Teacher Training courses and university short courses.

For more information about the exciting range of Higher Education opportunities and a copy of the latest prospectus, just call us on 01872 305746 or email heenquiry@truro-penwith.ac.uk

Alternatively discover more online at truro-penwith.ac.uk/uni or attend one of our College Open Events. See our website for dates.

ADULT LEARNING

If you are looking to re-train, gain a new qualification, find a new hobby or learn a new skill, the College has something for everyone.

If you are looking to develop your career or boost your current skills, our wide range of Career and Professional Development qualifications and courses could help you to achieve your goals. With courses in industry-relevant areas including administration, accounting, construction, education, HR, law and leadership and management, there are lots of opportunities for you to upskill and progress in future careers.

If you are interested in improving your Maths and English qualifications we have a range of Functional Skills and GCSE courses to offer you.

The College also offers a variety of Part Time Leisure Courses. If you would like to try a new hobby or activity, with options including art, craft, dance, DIY, fitness, languages, music and photography.

Full and partial funding for your adult learning course may be available depending on your individual circumstances so please contact our Future Skills and Adult Learning Team to discuss your eligibility.

For further information and advice, please contact:

t: 01872 308000

e: futureskills@truro-penwith.ac.uk

w: truro-penwith.ac.uk/futureskills

BUSINESS PARTNERSHIPS & APPRENTICESHIPS

The Truro and Penwith College Business Partnership team works with companies across Cornwall to deliver high-quality training solutions for their current and future workforce.

We aim to improve business and individual performance by working with businesses to:

- Bring talent into businesses through traineeships, apprenticeships and professional training programmes
- Provide industry-relevant training and qualifications for employees to progress their careers, including leadership and management, coaching and business skills seminars
- Design and deliver bespoke training to directly respond to business needs

If you would like to find out more about working with our Business Partnerships team please contact:
t: 01872 308000
e: futureskills@truro-penwith.ac.uk
w: truro-penwith.ac.uk/futureskills

FAQ

YOUR QUESTIONS ANSWERED

What is a 16 to 19 Free School?

16 to 19 free schools are stand-alone educational institutions for the education of 16 to 19 year-olds. They are funded directly by the ESFA on the basis of the national funding formula for 16 to 19 provision.

Why is Callywith College a Free School? Truro and Penwith College has chosen to work with the Department for Education to deliver Callywith College as a Free School. Callywith College is part of the Truro and Penwith College Bodmin campus. This ensures that the College has the necessary support both educationally and financially to deliver the proposed vision.

Is Callywith College part of Truro and Penwith College? Callywith College is run in association with Truro and Penwith College, which also owns the Callywith College site.



Why should I choose Callywith College? There are many reasons why Callywith College is a great place to study after you have finished school. With state-of-the-art facilities and resources, a diverse range of courses and enrichment activities, exceptional teaching and student support and a track record of student achievement, Callywith College is your stepping-stone to a bright future. See our 'Why choose us' section of this prospectus beginning for more information.

My school has a sixth form, do I have to stay there? Although you now have to stay in full-time education until the end of the academic year in which you turn 18, it's your choice where you want to study.

Can I have a look around the College? Callywith College run a number of Open Events throughout the year. You can hear from staff, view the fantastic facilities and find out about your life as a student. See the inside back page for full details.

I can't decide what type of course to take; what might help me choose? The 'What to Choose' section gives details about the types of courses we offer and what they entail. There is a wide range of A Levels and vocational courses to choose from, so there is bound to be something to suit you here.

Do courses have entry requirements? Yes, all courses do. Please refer to the 'What to choose' section for details of what grades you need to start your chosen course.

Can I go to university if I don't take A Levels? Vocational courses provide a proven route to university providing the subjects are compatible. College Open Events are a great opportunity for you to find out whether the course you want to follow is suitable for applying to university, as is your interview.

How do I apply for a course? The applications process is covered in the 'How to Apply' section inside the back page of this prospectus. Firstly, you will need to complete an online application form at callywith.ac.uk/how-to-apply.

Can I just enrol in an academy?

No. Academies are offered only in conjunction with a full-time programme of study. They are intended as a supplement for, and not an alternative to, the qualifications the College runs.

When can I apply and when will my interview take place?

You can send in your application from October onwards. Once your application has been checked by our admissions team, you will receive an email confirming your interview date and time with your specialist interviewer. Confirmation of your selected appointment will be sent to you by email, and can be checked via the online portal.

What questions will I be asked at my interview?

Your interview is not a test, it's more of an informal chat that provides a chance for you to discuss your plans for your future, both in and beyond education. You will be asked what course[s] you are planning on studying and why, about your career aspirations, as well as your personal interests and hobbies.



Your course choices will then be looked at in relation to your own aspirations to ensure that the two match up well. You will also be asked about any learning support you may require when starting College.

What if I don't get the GCSE grades I was expecting?

If you don't achieve the GCSE results provided in your offer, don't panic. Please ensure you enter your results into the online portal ASAP. This will then notify us that we need to contact you to discuss whether pursuing your selected course is the right choice for you, or if another course might suit

you better in light of your recent results. A member of staff will call you or you may be invited into the College.

How will I get to College?

Callywith College has partnered with Go Cornwall to provide the College bus service. Subsidised travel is available to students from low income families. Details of our College timetables and any financial support available can be found at callywith.ac.uk/transport.

What are Enrichment

Opportunities? Enrichment opportunities are an opportunity to further your current interests, or develop new ones. Options on offer can assist you in gaining further qualifications such as the Duke of Edinburgh's Award, or they can simply be a way for you to enjoy your hobbies. Further information can be found in 'The Low-down' section of this prospectus.

How can parents/carers get involved in running the College?

The College has two Parent Trustees ensuring the views of parents/carers is a key consideration for the College. Parents/carers will also be invited in to the College in September to meet key staff and ensure their full involvement throughout their child's time at the College.



INDEX

A	Academies 14, 70 & 79	M	Make the most of it 12
	Access 80		Meet the Team 18
	Access to Higher Education 88		Mental Health, Welfare & Counselling Support 81
	Adult Learning 89		More of what you love 6
	Art Shop 80	O	Open Events 95
	Attendance Advice 81		Operation Encompass 82
B	Business Partnerships & Apprenticeships 89		Outstanding Education 10
C	Callywith Active 78		Outstanding opportunities 16
	Callywith College Bursary Fund 81		Outstanding outcomes 26
	Campus Life 79	P	Personal Development Tutor 81
	Careers Guidance 81	R	Refreshments 80
	College Day 83	S	Safeguarding Children, Young People & Vulnerable Adults 82
	College Policies & Procedures 83		Special Educational Needs and Disabilities (SEND) 81
	Courses 28		Student Ambassadors 79
	Creative Arts 79		Student Council 79
D	Data Protection Act 83		Student Destinations 24
	Discover More 08		Student Life & Opportunities 78 & 83
	Drugs, Alcohol & Smoking Policy 83		Student Representation 79
E	Entry Requirements 30		Student Services 81
	Equality of Opportunity 82		Study Plus 78
	Equality & Safeguarding 82		Supporting You 20
	Examination Fees 83		Support Services 80
F	FAQ 90		Sustainable Travel 86
	Fees 83	T	Ten Tors 79
	Foundation Art & Design 88		The College Campus & Resources 80
	Fundraising 79		The Duke of Edinburgh's Award 78
G	GCSEs & Functional Skills 80		The Low Down 78
	Get Results Go places 22		The National Citizen Service (NCS) 79
H	Higher Education 89		Travel Opportunities 79
	How to Apply 94	W	Welcome 4
I	Index 92		What to Choose 30
	Information Technology 80		Work Experience 78
L	Learning Centres (Libraries & IT Suites) 80	Y	Your Application 83
	Learning Difficulties & Disabilities 82		Your Journey to College 84
	Learning Services 81		
	Lifelong Learning 88		



HOW TO APPLY



HAVE A THINK & DO YOUR RESEARCH



What subjects are your favourites, which do you enjoy the most? What is your dream career and what subjects or courses will help you get there?



ATTEND AN OPEN EVENT



Our Open Events are a great way to hear from teaching staff, see our fantastic facilities, find out about the subjects you are interested in and discover new options.



COMPLETE YOUR APPLICATION ONLINE



Please use the online application system, available through our website callywith.ac.uk/how-to-apply to apply for your place.



ATTEND A SHORT INTERVIEW



After completing your application you will be invited to attend a short interview. This is a chance for you to discuss your options and narrow down your course choices. At the interview you will receive useful information and contacts.



ACCEPT YOUR COURSE OFFER



You will be given the course entry requirements and a course offer via email.



WE'LL BE KEEPING IN TOUCH



In early summer, we will email to check you are still happy with your course choices and to provide more information about the start of term, bus passes and bursaries.



LET US KNOW YOUR GCSE RESULTS



In late summer, you will receive information on how to enter your results online on GCSE results day and enrolment day information.



ATTEND YOUR ENROLMENT & START COLLEGE



You will have been given a date and time to attend an enrolment event, which is normally a few days before the official start of term. We look forward to welcoming you.



OPEN EVENTS

DISCOVER WHY WE ARE OUTSTANDING AT ONE OF OUR OPEN EVENTS.

SATURDAY 18 NOVEMBER 2023 OPEN DAY 10AM - 3PM

SATURDAY 27 JANUARY 2024 OPEN MORNING 10AM - 1PM

All dates and times correct at the time of publication.

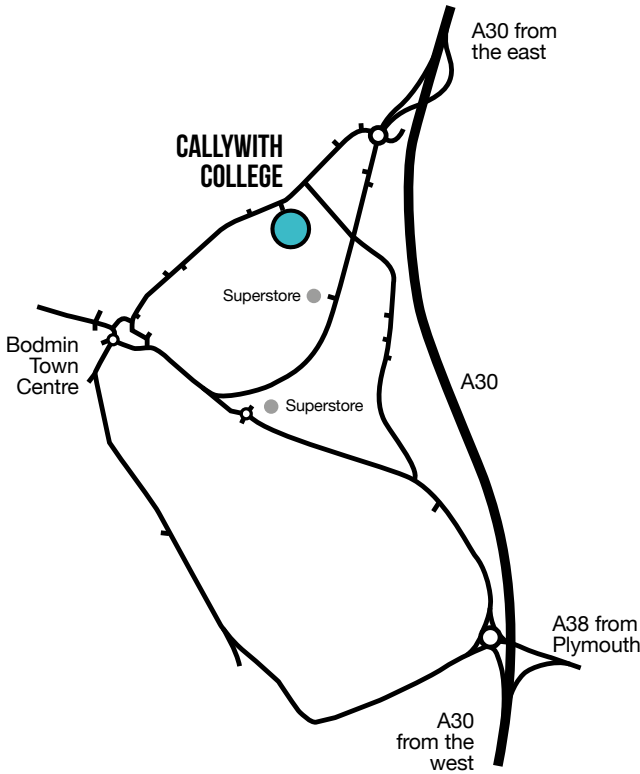
DISCOVER THE DIFFERENCE



We look forward to sharing our College with you. Find out more online: callywith.ac.uk/open-events

HOW TO GET TO CALLYWITH COLLEGE

Callywith College, Old Callywith Road, Bodmin, Cornwall PL31 2GT



OPEN EVENTS

We look forward to sharing our College with you. See our fantastic facilities, learn more about our courses and discover the exciting opportunities available at Callywith College.

SATURDAY 18 NOVEMBER 2023 OPEN DAY 10AM - 3PM

SATURDAY 27 JANUARY 2024 OPEN MORNING 10AM - 1PM

GET IN TOUCH

Call us
01208 224000

Visit us
callywith.ac.uk

Email us
enquiry@callywith.ac.uk

Find us on social



All open event dates and times correct at the time of publication.

Correct at time of print. Prospective students should check with the College for up-to-date information. This document is a guide for students and parents. It is not intended to create any contractual relationship. Courses and other details may be modified if necessary. Programmes of study leading to a qualification are subject to the approval and regulations of awarding bodies.

Many thanks to all our students, past and present, who appear in this prospectus.

If you require this document in any other format please contact Callywith College on 01208 224000.

In association with Truro & Penwith College

