



Callywith College

Further Education Prospectus



2017

In association with
Truro & Penwith College



Welcome



Callywith College has been developed in association with the Ofsted 'Outstanding' Truro and Penwith College. As Director of Curriculum at the College, I have been closely involved with the project from its inception and I am delighted to have been appointed Callywith College Principal Designate.

We will ensure that Callywith College shares the same values and goals of Truro and Penwith College, providing you with the best possible learning experience, and supporting you every step of the way in your progression to Higher Education or employment. You will receive the highest quality teaching and learning in a supportive and caring environment, which will both nurture and challenge you.

The College will deliver state-of-the-art facilities and we look forward to welcoming you to the campus during the next year so that you can see its development for yourselves as we prepare to open in August 2017.

I look forward to meeting you at one of our upcoming events as you make the decision to join Callywith College and take the next exciting step in your future.

Mark Wardle

Callywith College Principal Designate
Truro & Penwith College Director of Curriculum



I am delighted to be able to introduce Callywith College and the great new opportunities it will provide for learners in North and East Cornwall. Additionally, many hundreds of learners already travel daily to Truro College from these areas, and I am delighted too that in Callywith College we are able to bring the education they seek closer to them.

We are one of the very best colleges in the country and everyone involved has been rewarded for their continued hard work with Ofsted designating us 'Outstanding'. Callywith College will be based on these same outstanding foundations ensuring you have the best possible post-16 experience.

Our students have achieved record-breaking results across the board and our tutors have excelled in the delivery of the highest standard of education. By joining Callywith College you can expect the same experience.

As you explore our prospectus you will see the level of passion we bring to all aspects of the College life. I hope you will decide to become part of this exciting new College and create your own outstanding experiences, achievements and future.

David Walrond

Truro & Penwith College Principal



Contents

Your future starts here...

Choose us	4
Campus & Facilities	8
Student Life	10
Academies	12
Your Options Explained	14

A Levels 16

Level 2 Progression 30

Level 3 Extended Diplomas 34

Academies	42
The Low-down	46
Frequently Asked Questions	50
Your Journey to College	52
Lifelong Learning	54
How to Apply	56
Information Events	57
Index	58

A Levels 16

Art & Design: Fine Art	17
Art & Design: Illustration/Graphics	17
Biology	18
Business Studies	18
Chemistry	19
Computer Science	19
Drama & Theatre Studies	20
Economics	20
English Language	21
English Language & Literature	21
English Literature	22
French	22
Geology	23
Geography	23
History	24
Law	24
Mathematics	25
Mathematics (Further)	25
Media Studies	26
Philosophy of Religion & Ethics	26
Photography	27
Physics	27
Physical Education	28
Psychology	28
Sociology	29
Spanish	29

Level 2 Progression 30

Art & Design	31
Business	31
Health & Social Care	32
Information & Creative Technology	32
Sport	33

Level 3 Extended Diplomas 34

Applied Science	35
Art & Design	35
Art & Design: Photography	36
Business	37
Children's Play, Learning & Development	37
Computing	38
Creative Media Production & Technology	38
Games, Animation & VFX Skills	39
Health & Social Care (Health Studies)	40
Health & Social Care (Social Care)	41
Sport & Physical Activity Development	41



Choose us

We know that making decisions about your education can sometimes feel like a daunting prospect. The impact of making the right choice can be dramatic, not only on your results, your progress and your experiences, but importantly, on the life you want to live.

Sharing the values and vision of Ofsted Outstanding Truro and Penwith College, Callywith College will motivate, develop and nurture you whatever course or option you decide. All this in an environment where inspiration and quality permeates everything, from the foundations of the purpose-built, state-of-the-art buildings to the highly-skilled and dedicated tutors and staff.

By choosing to study at Callywith College, we believe you are making the very best choice you can.

Students can make **excellent progress during their time at the College**. There is a shared culture of **striving for excellence and continuous improvement** across the whole organisation.

Extensive **student support services** include career and progression guidance, learning support and health, welfare and counselling services each with **dedicated, friendly tutors and staff**.

Transport links between the College and **North and East Cornwall**.

A range of **A Levels, Level 2 Progression** and **Level 3 Extended Diplomas** all taught by highly qualified, specialist teachers.

A range of Academies covering Sport, Medics and Academics **to support students who are gifted and talented**, and to promote excellence and academic success.

State-of-the-art buildings, facilities and resources. Study in the best possible surroundings **designed just for you**.



Results

The Truro & Penwith College Formula

Your education and your future couldn't be in better hands when you choose to join Callywith College.

Callywith College has been developed in association with Truro and Penwith College, officially recognised as one of the best colleges in the country and awarded Ofsted 'Outstanding' status as a result of its inspection in 2016.

Not only is Truro and Penwith College the best performing state A Level provider in Cornwall, it is also one of the highest performing colleges nationally on all courses at all levels. Nearly 900 students successfully completed their two-year Level 3 vocational courses in 2016 with again, most students achieving very high grades.

By sharing the same goals and values as Truro and Penwith College, you will get the best opportunity to achieve your educational goals studying at Callywith College. So whether you have a career in mind, or you are still exploring your options, we have the perfect course for you.



Truro & Penwith College students achieved **100% A Level pass rate** in 39 subjects

A Levels

More students than ever have achieved outstanding A Level results at Truro and Penwith College, which once again has beaten the national average with more than a 99% pass rate.

Additionally, students achieved a 100% pass rate in a total of 39 A Level subjects across the College's campuses in Truro and Penzance.

On the 'points per student score' for A Level, which effectively measures the university "currency" students have earned, the College's score of 819.4 was not only well above any other state provider in Cornwall but also exceeded the national average score by over 40 points.

Students achieved significantly higher grades than those predicted by their GCSE results and on this value-added measure the College

outperforms not only the rest of Cornwall but over 98% of the 2,300 state school and college providers in England.

A record-equalling 87% of students passed with the higher grades of A-C (compared to the national A-C grade pass rate of 78%).

Very high numbers of students were successful in STEM (Science, Technology, Engineering and Maths) A Level subjects:

- Biology: 128 students
- Chemistry: 122 students
- Physics: 113 students
- Mathematics: 203 students

Very high numbers were also successful in other traditional "facilitating" subjects:

- English: 387 students
- Geography: 147 students
- History: 119 students

Vocational

Nearly 900 students successfully completed their two-year Level 3 vocational courses this summer with again most students achieving very high grades. These figures make Truro and Penwith College one of the largest providers of higher level vocational qualifications nationally, as well as one of the most successful in terms of achievement levels.

More than four hundred students gained diplomas in occupational areas such as Administration, Beauty Therapy, Construction, Hairdressing, Professional Cookery and Light Vehicle Maintenance with around a hundred of these being at Level 3 (A Level equivalent).

Nearly 200 students achieved the highest BTEC Level 3 grade possible, the coveted triple Distinction star.

A record number of 126 students successfully completed their two-year Level 3 Extended Diploma courses this summer at Penwith College. Students excelled on Extended Diplomas including Sport, Health & Social Care, Business and Art with 43 students achieved at least a triple Distinction.

Mark Arnold, Director of Quality at Truro and Penwith College, said:

"The fact that the College offers many full time, specialist occupational and skills-based courses alongside over 20 different Extended Diploma courses ensures that students are able to choose the right course for them. These exceptional achievements ensure that our students have the best possible progression opportunities onto university, into employment or Apprenticeships."



Campus & Facilities

At Callywith College your studies will take place in an inspiring location, with modern, purpose-built buildings and facilities designed specifically for you. You will meet like-minded students, all keen to be among the first to experience the very best.

When you first arrive, no matter your interests, talent or ambitions, you will become part of a College community that is focussed on the future and you will make friends quickly and be supported by highly-motivated and inspirational tutors.

You will choose your favourite places to hangout as you become familiar with the fantastic facilities. Whether relaxing in the wildflower meadow under the sun, grabbing a bite to eat before heading to the Mac computer suite, or throwing on your trainers and playing sport on the latest 3G Astroturf pitch, life around lectures is rich, varied and a lot of fun.



Back in the classrooms, the quality of teaching and modern, industry-standard equipment across the curriculum will inspire you to make continued progress throughout your studies.

Getting to the College couldn't be easier, with cycling routes from Bodmin and convenient and quick transport links to and from North and East Cornwall.

You will love experiencing your own transformation, as time at College prepares you for the next stage of your life. We know that universities and employers look for talented, well-rounded individuals who know how to excel in an adult environment.

It's exciting, challenging and rewarding, and the College is here to support you every step of the way.



Student Life

As a student at Callywith College you will be a key part of a diverse and thriving student community.

We believe each student is unique and we welcome the individuality you will bring to the groups of new and old friends you will make, your classmates and the College as a whole.

Should you need it, you will find help around the College, both practically and in the form of guidance from our dedicated and approachable staff. Student Services is on hand to help with all kinds of advice from University, careers to health and wellness, while our Learning Services support can help with additional study or IT needs.

It is important to us that you get the most out of your time at Callywith College and the support you'll get will ensure you have a positive learning experience and enjoy student life to the full.



Academies

Whether it is sporting, academic or medical, by joining an Academy in association with Truro and Penwith College, you will love being immersed in an environment that will see your skill-levels soar.

The achievements of current and past Academy students are a huge source of pride for all involved, with many representing their country in sport, gaining national recognition with their music or breaking new ground in their chosen field of study.

Your time with your chosen Academy doesn't interfere with your full-time course studies and will lead to incredible opportunities.

Just ask Jack Nowell, England RFU player or Andrew Henderson, professional football freestyler who claimed the Red Bull Street Style World Final title in Brazil 2014, about how Academies have helped change their lives and how Callywith College can help you take that step from Cornwall to the world stage.

Find out more on page 42.





A photograph of three young people, two men and one woman, sitting outdoors on a stone ledge. They are all smiling and looking towards the camera. The woman on the left is wearing a denim jacket. The man in the middle is wearing a red and black plaid shirt. The man on the right is wearing a yellow jacket over a white shirt. In the top right corner, there is a decorative graphic of overlapping green and yellow triangles.

Your Options Explained

Are you aware just how many options there are for you?
You have so much choice.

If you want to stay in full-time education, you can choose subjects that interest you, either a variety at A Level or specialising in one area on a vocational course. You may decide classroom based learning isn't for you anymore - many of our full-time vocational courses are practically based.

All of these options will give you an advantage whether you want to find a job or go on to university. We'll help you make the choice that's right for you.

For more information and to discuss your options in further detail make sure you come along to one of our many open events. Here you will also get the opportunity to see our fantastic facilities and find out about your life as a student at one of the best colleges in the country. Please refer to page 57 for our open event dates.

Please note at the time of going to print the College is awaiting clarification from awarding bodies regarding provision which will be approved to run from 2017.

Progression Level 2

How long is it? One year

What do you need? Three GCSEs at grade 3 or 4 including English Language or Literature and/or mathematics.

What is it? These courses are focused on progression, either to further study or into employment. You will develop knowledge and understanding by applying your learning and skills in a work-related context.

Progression 2 is the pathway to Level 3 courses including Extended Diplomas and in specific instances, to A Levels. Progression 2 involves Level 2 English and maths plus a vocational qualification. This provides the platform for progression to a wide range of courses. Assessment will be through a combination of external examination and coursework.

Extended Diploma Level 3

How long is it? Two years - In Year 1 you will complete a Level 3 Foundation Diploma before progressing to gain the full Extended Diploma at the end of Year 2 unless otherwise stated.

What do you need? Four GCSEs at grade C or above or a Level 2 Diploma in appropriate subjects (to include English Language or Literature and/or mathematics at grade 5 or above).

What is it? Previously known as the National Diploma, the 180 credit, 18-unit qualification is referred to as the Extended Diploma. This Diploma is equivalent to three subjects at A Level. It is an excellent route if you have decided on the broad area of employment you wish to pursue. The combination of a range of specialist modules with the depth of knowledge acquired enables you to progress successfully into higher education or into employment. You will also be required to undertake several hours of independent study. Assessment is through coursework, external written assessments and evaluation of practical skills.

A Level (Level 3)

How long is it? AS Level: One year / A2 Level: Two years

What do you need? Five GCSEs at grade C or above including grade B or above in appropriate subjects (to include English Language or Literature and/or mathematics at grade 5 or above).

What is it? Advanced Level programmes consist of formal lectures, class activities and assessments, set homework and problem solving. For each subject, you will also be required to undertake several hours of independent study. Modern study facilities are available in the College and successful students use these effectively.

Students who successfully complete the AS Level units in Year 1 may progress to A2 Level in Year 2 where further units are assessed. We strongly encourage a broad programme for A Level students. Most subject specifications will contain a combination of examinations and coursework assessment.

From 2017, all A Levels will be delivered in the new linear format with no qualification at the end of year one. Unlike old modular A Levels, academic assessment for Linear A Levels will take place at the end of two years of study.

A Levels are however, also available as a stand alone one-year AS Level qualification. These AS Level qualifications do not lead on to the second year of study and a full A Level qualification.





A Levels



A Level

Art & Design: Fine Art

Do you enjoy drawing? Would you like to improve your skills and knowledge? Would you like the opportunity to see and understand the world in a different way? This course offers you the opportunity to develop creatively, either as a personally enriching interest or as part of a progression towards a career within the creative industries.

The AS course starts with a range of varied and challenging workshops which develop key skills and knowledge fundamental to the world of Art and Design. The course gradually builds around each student, to meet your creative interests and needs.

We begin the year with varied approaches to observation and drawing through which your visual understanding will improve. During a series of workshops you will explore a range of two-dimensional materials and approaches, such as tone, mark making, ink, mixed media, colour and painting.

The workshops are structured to encourage personal confidence in your own preferences and interests. You will explore how a range of modern and historic artists have communicated ideas through their imagery and techniques.

Your sketchbook documents your evolving skills and knowledge along with new artistic terms and ideas, which you will record through your own style of note taking. By the end of the first year you will have developed a body of coursework which explores personal ideas through to a final outcome.

The A2 Fine Art course builds on your learning in the AS Fine Art year. There is one personally negotiated, more focused coursework project and one exam project. Experimental drawing practical workshops are held throughout the year, encouraging you to take risks and work in new and different ways.

As well as being creative, there is a small written element. The A2 year is supported by group presentations, strengthening your analytical skills through both discussion and written work, preparing you well for Higher Education. Towards the end of the A2 course you are given eight weeks lecture time to prepare for a 15 hour exam. The preparation time forms a personal project responding to a chosen exam theme; the 15 hour exam time is used to create a final piece which resolves this project.

A Level

Art & Design: Illustration/Graphics

Do you possess a lively, enquiring mind? Do you enjoy developing your ideas through drawing and utilising a range of processes towards a final product? During the Illustration/Graphics course you will learn to develop design solutions, exploring the power of visual communication as an invaluable commercial tool. The course is structured to support and develop your confidence and individual strengths, from illustrative and traditional studio-based skills through to more graphic and digitally-based practice, allowing for a broad and creative approach to design.

You will begin the AS course with range of varied and challenging workshops, developing fundamental skills and knowledge integral to the world of illustration and design. Workshops are a mix of traditional and contemporary processes; these include experimental drawing and playful image making for students who wish to take the more traditional approach. Digital workshops offer all students access to develop skills in industry-standard software including Adobe Photoshop, Illustrator and InDesign. Other aspects you will explore include typography, thumbnail sketches, layout design, mixed media, extending these further through digital media. You will research a range of illustrative and graphic styles, applying this knowledge to develop your individual practice.

The research and development of your concepts and designs are gathered in your sketchbook. Documenting and constantly reflecting on your creative development, you will become skilled in communicating ideas visually, to meet your clients' needs. By the end of the AS year you will have produced a body of coursework that documents your creative thinking and design process.

The A2 Illustration/Graphics course builds on your learning in the first year. There is one personally negotiated, more focused coursework project and one exam project. As well as building on your evolving visual identity, there is a small written element; this is supported by group presentations, strengthening your analytical skills through both discussion and written work.

Towards the end of the A2 course you are given eight weeks lecture time to prepare for a 15-hour exam. The preparation time forms a personal project responding to a chosen exam theme; the 15 hour exam time is used to create a final piece which resolves this project.



A Level

Biology

If you enjoy learning about life and living organisms, and want to delve deeper into concepts that you have been introduced to at GCSE, from biochemistry and cell biology through to behaviour and ecology, then A Level Biology will offer you an exciting, challenging and stimulating area of study.

Biology encompasses the cellular basis of living things, the transformation of energy that underlies the activities of life, and the genetic basis for inheritance in organisms. You will study the evolutionary relationships between organisms and the diversity of life on earth, to include microorganisms, plants, animals and fungi. The structural and functional relationships studied in biology draws on the sciences of chemistry and physics for its foundations and applies the laws of these disciplines to living things.

In your first year of study you will begin by gaining an understanding of the biological molecules which make up living things. This will enable you to understand how these molecules build up into cells, the fundamental unit of life. You will explore the ultrastructure of cells and learn the different roles of different parts of the cell, as well as how cells are organised in organisms and how they exchange substances with their environment and other cells. You will explore the need for specialised exchange surfaces and transport mechanisms in multicellular organisms including humans, fish, insects and plants. You will also learn about the fundamental role of DNA, its role in protein synthesis and how it can be used to make sense of the great diversity of life on earth.

In your second year of study you will build upon the concepts introduced in the first year to develop an understanding of the complex biochemistry of photosynthesis and respiration, and the detailed mechanisms of the nervous and endocrine systems. You will study the latest advances in genetic technologies and discover how genes are inherited and influence populations. You will also conduct your own ecological investigation during a field course.

A Level

Business Studies

Do you plan on joining the world of work and industry during your lifetime? Whether it is setting up your own small business or working for a global multinational, many of the key areas of understanding and useful skills are introduced within the A Level Business Studies course. You will be provided with a valuable insight into the world of industry and why businesses make the decisions that they do, and how this impacts upon markets and individuals.

The course will also help you develop numerical and literacy skills in an applied setting through class work and assessments. Perhaps most importantly, the course will require you to reflect upon the commercial world around you and how it impacts your daily life and future.



Find out how to
apply on page 56.

You will begin by exploring how a variety of different businesses interact with their consumers and competitors, and how they make many of their everyday decisions. You will then go on to look at people within the workplace and how a business can get the best out of its employees. Within the second half of your first year you will consider many of the more operational and financial

decisions facing businesses. This will help build on your understanding of what it takes to manage a business, the importance of the everyday decisions facing a business and how it is critical to consider a business' finances.

Within the second year you will begin to adopt a more holistic approach to business decisions and consider all internal elements of the business together and how a business will develop a strategy from these. You will gain a greater appreciation of the choices businesses face every day and how having a future focus is critical. During the final stages of your course you will consider the global environment that businesses now operate within and how a business' strategy must consider technological, social, environmental and ethical consequences.



A Level

Chemistry

If you enjoy the study of the substances that make both us and our surroundings then Chemistry is a subject you should consider. Chemistry is everywhere; in the food we eat and the water we drink, from the clothes we wear and our mobile phones to the medicines that keep us healthy.

Chemistry is truly the “central science”. New breakthroughs in fields such as genetics, biochemistry, medicine and pharmacy, materials science (including nanotechnology), forensics, the environment and next-generation computer hardware are all driven by chemistry. Emphasis throughout the course is on developing your knowledge, competence and confidence in practical skills and problem solving, together with enhancing your understanding of key chemical ideas and how they link to each other. All this makes A Level Chemistry a challenging and interesting course.

Chemistry is a fascinating and fundamental subject. You will study 13 topic areas; each will allow you to explore a topic containing different key concepts. Once the features of a chemical topic have been developed, you will consider the applications and relevance to everyday life.

Examples of topics you will study in the first year include the study of fundamental areas such as organic chemistry, energy, quantitative chemistry and chemical bonding alongside contemporary issues such as atmospheric chemistry. In the second year these topics are studied in more depth and new areas introduced such as ^{13}C NMR spectroscopy. A variety of teaching methods are used with an emphasis on practical experimentation.

A Level

Computer Science

If you enjoy learning about the fundamental principles and concepts behind Computer Science and how software is engineered, then the Computer Science specification will stretch and challenge you. You will be provided with valuable skills in a range of programming environments, how we use programming languages to solve a range of problems and how digital technology is used by others, particularly the moral, ethical, legal and cultural opportunities and risks. It will also help you to think creatively, innovatively, analytically, logically and critically, as well as allowing you to apply practical mathematical skills.

The basis of this course is computation, both in theory and practice. Computer Science is an academic subject that requires you to be systematic and logical, and so often lends itself to the more technically minded student. You'll start off by developing practical skills in a range of programming languages, principally C#, Delphi and Python. You will have the opportunity to perform systems analysis, software engineering and program construction.

Then, you'll move on to learn how software interacts with hardware, in particular the role of the operating system, data structures and processes, and how the principles of hardware impact on software and data communication. Later, you will discover how different types of software drive the digital economy and the implications of the digital revolution on the rest of society. You will also examine issues with digital security and undertake a major piece of independent coursework on a software problem of your own choice.

As computers are now such an integral part of society, people with A Level Computer Science skills are in extremely high demand. Many career possibilities are available to you with Computer Science including system analysis, computer programming, animation and many more.



A Level

Drama & Theatre Studies

If you enjoy learning about all aspects of drama and theatre then this course will really suit you. It is a practical course that explores the theoretical work of playwrights, directors and theatre companies that make theatre so exciting and diverse.

It will provide you with the necessary skills to analyse and appreciate any play text or performance recognising how historical and cultural contexts inform all areas of theatre making whilst developing your performance skills. We have an excellent learning environment; classes will take place in a purpose built theatre space. This dedicated space encourages you to develop your understanding of professional working theatre.

We approach the study of Drama and Theatre from three key viewpoints:

Actor - As an actor you will develop your acting skills - interpretation of character, exploration of style, voice, physicality and stage relationships with others.

Director - As a director you will develop your interpretative skills when working with plays. You will instigate ideas for performance and develop a directorial vision when working on original material or text.

Designer - As a designer you will develop your design skills and consider how design impacts upon an audience. You will develop ideas for set creation, costume, lighting and sound design.

This course is designed to provide a balance between performance, research, analysis and design. It is a collaborative course and will help you to develop important communication skills, confidence, imagination, creativity and promote personal and social development. Group work is at the heart of the course and you will enjoy working closely with others, responding to and giving supportive feedback.



A Level

Economics

Economics relates to every aspect of our lives, from the decisions we make as individuals to the policies of firms and governments. The study of Economics enables you to develop a deeper understanding of the world around us that is as valuable as it is interesting.

Economics has been defined as the study of the allocation of scarce resources between competing claims and needs. The subject deals with a multitude of problems facing modern societies and governments. Economics has connections to many other subjects such as Politics, Geography, History, Business, Psychology and Statistics.

You will begin by exploring the nature of markets and their role in allocating resources in a modern economy. You will use the concepts of supply and demand to analyse markets. You will also investigate the central role of the government when markets fail.

Next, you will examine the performance of the UK economy. Here you will be introduced to how levels of macro-economic activity are determined and also investigate key national and international economic indicators, policies and problems.

Later, in Year 2 you will focus on an understanding and analysis of the labour market and business structures. You will investigate the role of the government and examine key issues and policies effecting economic performance.

Finally the performance of the national and global economy is studied, which gives an overall context and framework for economic analysis in an integrated and globalised world. Key topics here include international trade, development, sustainability, the financial sector and globalisation.

A Level

English Language

Imagine you could take your innermost thoughts and insert them into someone else's mind. Well, you already have the ability to do this: it is called language. How do we learn how to speak and write? Where do words come from? Is the language currently being corrupted or is linguistic change good? By studying English Language you will explore these questions and more...

You will learn to analyse texts effectively while applying a range of theories and using detailed linguistic terminology. As well as texts studied in class, you will also be encouraged to select your own texts! You will explore how spoken, written and multimodal texts are influenced by context and both reflect and construct personal identities. The language analysed will be incredibly diverse including everything from a short informal text message between friends to a formal speech by the Prime Minister in the House of Commons.

You will also explore the exciting and controversial area of child language acquisition. How can children learn to form words and sentences within just a few years? Do children have an innate ability to learn language or do they simply imitate others? We will explore the views of theorists in response to such questions and we will analyse a range of texts both by and featuring children.

How has the English language changed since 1550? From the influence of Caxton's printing press, the *King James Bible* and Shakespeare's plays all the way through to the influence of the Internet, text speak (or 'txtspk!') and Americanisation, you will investigate how English varies globally, regionally and socially and consider attitudes towards language change.

You have plenty of opportunity to pursue your own interests in this subject. You will produce your own creative writing in a genre of your choice and you will also conduct an independent investigation which can focus on topics such as gender, power and journalism.



See our **fantastic new facilities** being built at one of our information events. Check out page 57 for dates.



A Level

English Language & Literature

Love writing? Like to analyse...well, everything? The English Language and Literature A Level allows you to be creative - not only in the fiction and non-fiction writing you will produce - but also in the creative approach you can take in your analytical work. How? This multi-disciplinary A Level imposes no rules as to how you should approach your analysis of a text. Word class? Sure. Imagery? Of course!

This A Level also differs from those focused primarily on literature by extending its coverage to explore non-literary and non-fiction texts. You can expect to study prose, drama and poetry, but also a range of texts such as articles, online copy and adverts.

Ever wondered how some politicians are so persuasive? How do misunderstandings occur when you text? This course has the answers. You will explore the nature of spoken and multimodal language: how people talk and why they talk in the way they do.

Opportunities abound to develop your creative writing in different genres, reflecting on your practice in order to become a critical reviewer of your own as well as others' works. What's great is that you get to choose what you write and discuss the texts which have inspired this creativity.

Writing is often more than a ripping yarn or interesting characters. You will explore how literature represents 'Society and the Individual' through the study of the prose classic, *Great Expectations* by Charles Dickens. Alongside this you will delve into the cynical, yet beautiful poetry of Philip Larkin. Through these texts you will explore visions and versions of the world different to your own - and interrogate how these writers use their work to comment on the role and the abuses of the state, the responsibility of the individual and the struggle we all face in discovering who we really are versus who society asks us to be.

This course will not only prepare you for a variety of higher education courses, but also develop your ability to think, to create, to speak, to read and to write - with flair.



A Level

English Literature

If you enjoy reading and analysing literary texts, then this is the course for you. You will study a range of challenging and stimulating works from a variety of periods from 1610 to 2010. The course offers opportunities for comparisons between texts and genres and considers works of literature in their historical and cultural contexts. You will learn the skills of close textual analysis and literary criticism.

In Year 1 you will be introduced to dystopian fiction. A dystopia is a nightmarish society, and writers use this genre to comment on and criticise the society in which they write. You will study George Orwell's *Nineteen Eighty-Four*, a terrifying vision of the future where everyone is controlled by an oppressive government. In Year 2 you will compare this to Margaret Atwood's *The Handmaid's Tale*, a feminist dystopia which shares many themes with Orwell such as power and identity.

In Year 1 you will also study Tennessee Williams' 1940s play *A Streetcar Named Desire*; the 19th century poems of Christina Rossetti, including her most famous poem 'Goblin Market', and Shakespeare's last solo play, *The Tempest*, which combines magic and innovative theatrical spectacle with political commentary on Renaissance society.

In Year 2, in addition to *The Handmaid's Tale*, you will study Ibsen's *A Doll's House*, a 19th century play with an ending so controversial Ibsen had to rewrite it in order to have it performed in Germany! In Year 2 you will also write two pieces of coursework. You will have a large degree of independence in your choice of texts and tasks (with guidance from your teacher).

A Level

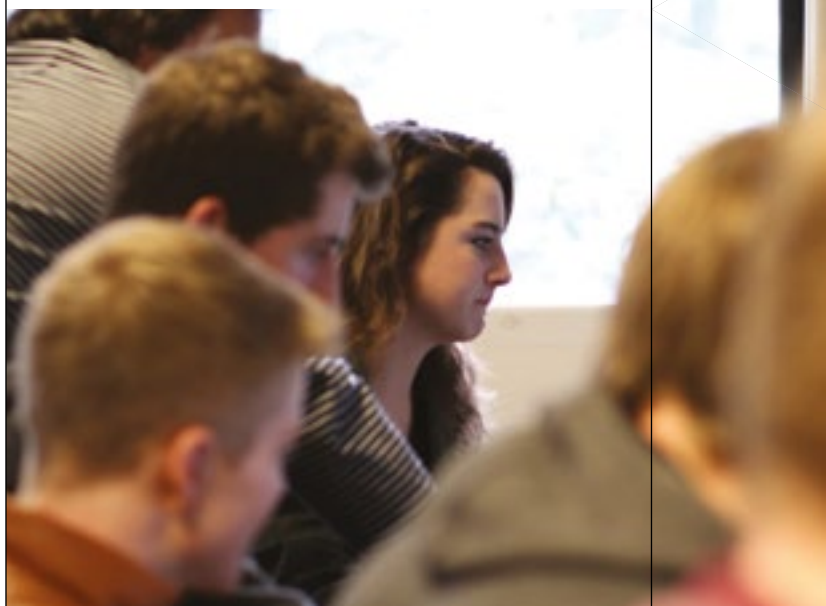
French

An ability to speak French is an advantage on the international job market. A knowledge of French opens the doors of French companies in France and other French-speaking parts of the world (Canada, Switzerland, Belgium and North and sub-Saharan Africa). As the world's fifth biggest economy and number-three destination for foreign investment, France is a key economic partner. That makes learning French an excellent choice for young people wanting to maximise their employment chances. The course at Callywith College will give you the opportunity to build on your knowledge of French that you have acquired at GCSE. One aspect of the course will be to improve your language skills, which means that you will learn vocabulary based on a variety of topic areas as well as grammar rules, which will enable you to make sense of the language and to use the language accurately.

You will develop all four language skills: speaking, reading, listening and writing. You will do this by using a wide range of materials, both in and outside the classroom. Your lessons will be conducted in specialist language rooms. You will also have access to our Languages Centre, where you can get help with your homework or any other aspect of your studies. Once a week, you will have a conversation session with our French Assistant to help you improve your confidence in speaking.

The second aspect of your course will be to develop your knowledge of French-speaking countries and their culture. You will do this by studying various topics as part of your course, as well as a French film and a French book.

At the time of writing, the changes to this specification are still under review, which means that specific topic choices have not been finalised. However, we will be able to provide you with this information during all open events at College.



A Level

Geology

Do you know which forces drive volcanoes, earthquakes and tsunamis? Are you fascinated by fossils and their evolutionary roots? Have you ever wondered where gold, diamonds and other natural resources come from? Are you concerned about the environmental consequences of the extraction of oil and gas or radioactive materials?

Geologists need a good grounding in physics and chemistry, and biology underpins the study of fossils, so if you are considering studying other sciences and would like to see different ways that they can be applied to the world around you (both in the laboratory and through fieldwork), then A Level Geology may be the subject for you.

In your first year you will investigate the Earth from its meteorite origins through to the range of rocks found in its different layers and surface environments. You will study the immense forces that circulate rocky material through the inside of the Earth and move the surface plates around, leaving huge cracks and folds behind as evidence of past activity. You will discover how geologists need a multitude of different skills to accurately measure and describe features in the environment. Through field trips you will develop these skills for yourself.

By the time you reach your second year you will be able to apply your basic knowledge and skills to many geological situations. You will use geological maps and cross sections to investigate the difficulties of finding and extracting resources, from water and gas to oil and metals. You will study how and where to construct dams and reservoirs, analyse and debate the problems of constructing roads, tunnels and coastal defences, and consider the comparative benefits of different sources of power from coal to geothermal sources.

In your second year you will also study the evolution of life on Earth and how geologists can use this knowledge to reconstruct a geological timescale stretching back a billion years. The evolution of life has constantly reacted to changes in environment and climate so you will also study the causes and driving forces behind changes in Earth's climate and the evidence we have for these changes, locked away beneath your feet. All this information is written in the rocks and you will learn how to read them!



A Level

Geography

AS/A Level Geography offers you an exciting issues-based approach to studying both physical and human aspects of the subject. Applying your geographical knowledge, understanding and skills to the world around you, you will engage critically with a wide range of complex contemporary issues such as tectonic hazards, climate change, resource insecurity, globalisation and superpowers.

You will make links between such varied geographical concepts through three synoptic themes embedded in the subject content. These three themes are:

- **Players:** Who are the different players involved in geographical issues and decisions? Why do some players have greater influence than others?
- **Attitudes and actions:** Why do attitudes to geographical issues vary so greatly? How does this influence actions?
- **Futures and uncertainties:** There are contrasting approaches when making decisions about geographical issues that will affect people in the future. The outcomes of choices made today are uncertain for a range of reasons

These over-arching themes will allow you to achieve a holistic understanding of Geography. Throughout the course, you will develop confidence in geographical skills (including fieldwork), which are embedded in teaching and learning. The assessment of your geographical skills will be integrated with the assessment of your knowledge and understanding of Geography.

Michael Palin (former President of the Royal Geographical Society) has written that "Geography explains the past, illuminates the present and prepares us for the future. What could be more important than that?". Inspired by your understanding of the importance of Geography as one of the key disciplines relevant to understanding the world's changing places and peoples, you will also develop a sense of achievement as you grow as a critical, independent thinker and as an informed and engaged citizen.



A Level

History

The study of History helps us to understand and explain the past and, as such, is a fascinating subject in its own right. In addition, the skills that you acquire as an historian, the ability to think clearly, to weigh up arguments and to analyse problems, are highly desirable in Higher Education and employment. History is a popular GCSE subject and AS/A Level allows students to develop their enjoyment and understanding of major world events.



Find out **how to apply** on page 56.

At Callywith College, we have developed two exciting and thought provoking courses to choose from. During the two years you will either study Modern or Medieval History. In Modern, you will study the British Empire between 1857 and 1967. How did Britain come to assume a vast Empire upon which the sun never set? Why, having amassed such a vast Empire, did

Britain relinquish much of it in a 20-year period after the end of World War Two? The rise and fall of the British Empire provides an interesting contrast to the other examined module - the rise and fall of Weimar and Nazi Germany, 1918-1945.

The final component of the History A Level comprises an historical investigation, looking at the history of the USA from 1754 to 1865, during which the USA won its freedom from the British - ending Britain's first empire - and then went on to descend into Civil War as the new nation attempted to define its political identity.

For the Medieval course, you will study the Crusades from 1071 to 1149 and the Angevin kings - a tumultuous period during which the authority of the monarch was challenged by Barons and Church alike. The third component of the Medieval course looks at Tudor England's emergence as a modern nation state.

A Level

Law

Law pervades every aspect of our lives, ranging from the personal decisions we make as individuals to purchase that concert ticket, to the perhaps more fundamental question of whether a person suspected of historic child abuse should stand trial, despite suffering from dementia.

Studying Law will encourage you to engage more fully and critically with current affairs and to develop relevant skills in research, communication, analysis and information and communication technology. In particular, there will be opportunities to hone your debating skills as well as a chance to experience the practical aspects of advocacy. Law is a natural partner to the study of English Language and Literature and other modern foreign languages at A Level, but the syllabus content also connects well with other subjects such as Politics, Psychology and Sociology.

You will begin by examining how the English Legal System works. This will give you an understanding of how our law has developed over the centuries to provide us with different sources of law, how these laws are made and applied, and by whom. We will also consider why it is necessary to keep the law up to date to accommodate the changing views of our society and how this can be effected.

During the course of the year, there will be the opportunity to visit the Westminster Parliament and the Supreme Court of Justice. On a more local level, at the end of the first year, all students will benefit from opportunities to attend the Crown Court to witness the criminal process in action.

Later, in the second year, your focus will be on Criminal Law and Justice. You will examine the different forms of homicide and will consider the circumstances which can lead to a charge of, for example, Actual Bodily Harm (ABH) or Grievous Bodily Harm (GBH). At the same time, we will look at a range of different defences and evaluate the effect of successfully raising a particular defence on the charge. Alongside this, you will learn about the role of the police during the different stages of the criminal investigation and will gain an appreciation of the various sentences which may be imposed on a convicted defendant.



A Level

Mathematics

Mathematics is a challenging and stimulating course that will encourage you to develop your mathematical skills, improve your ability to think logically and enable you to determine solutions to a wide range of problems. If you enjoyed studying GCSE Maths, particularly the more algebraic topics, and would like to significantly improve your mathematical skills, then this would be an ideal subject for you to study at AS/A Level.

The majority of the course is algebra based. By studying the course your algebraic skills will improve significantly as you progress through the core modules. You will learn many mathematical techniques and their applications to a variety of practical situations. This will benefit the study of other subjects, such as Physics, Chemistry, Biology, Geography, Psychology, Economics and Business Studies.

The course provides an excellent preparation for a wide range of university courses such as Engineering, all of the Sciences, Medicine, Accountancy, Architecture and Computer Science. It is also considered to be a facilitating subject for many other courses. It is a versatile qualification that is well respected by employers.

If you are still not convinced then you may be interested to know that Mathematics is the only A Level proven to increase earnings in later life - by an average of 10%, although hopefully your motivation to study the course is one of interest in learning about mathematics as opposed to being purely financial!

A Level

Mathematics (Further)

Do you enjoy solving puzzles and playing strategy games? Do you want to develop a deep understanding of big ideas? Do you want to know 'why' and not just 'how'? Do you want a stimulating and challenging course that will develop key skills such as problem-solving, logical reasoning, communication and resilience? If the answer is yes, this could be the course for you.

Further Mathematics provides an excellent preparation for a wide range of university courses as well as being a versatile qualification that is well respected by employers. Further Mathematics is an essential requirement for many degree-level Mathematics courses. By studying Further Mathematics you will increase your knowledge and understanding of mathematical techniques and their applications as well as enhancing your study of other subjects, in particular Physics, Chemistry, Biology, Geography, Psychology, Economics, Business Studies and PE.

Further Mathematics is a full AS or A Level qualification that you can take alongside Mathematics. You will need to be studying (or have already achieved) the corresponding level in Mathematics. Taking A Level Mathematics and Further Mathematics will give you two A Levels and will mean that you spend about half your time at College studying on your Mathematics courses. It is also possible to take AS Further Mathematics alongside either AS Mathematics or the second year of A Level Mathematics, which will give you one and a half A Levels.

Further Mathematics is designed to stretch and challenge able young mathematicians by introducing you to new techniques and concepts, such as complex numbers and matrices, as well as studying material from A Level Mathematics in greater depth. You will be taught by highly-qualified, specialist subject tutors in classes consisting exclusively of Further Mathematics students.

If you are still not convinced then you may be interested to know that Mathematics is the only A Level proven to increase earnings in later life - by an average of 10% - although hopefully your motivation is based on your desire to study a course that is satisfying, interesting, well respected, useful, fun and full of surprises.





A Level

Media Studies

The media is a powerful entity which plays a significant role within society. The centrality of the media to human experience - from the conduct of everyday life, to the exercise of power, to the creation of culture - is inescapable. We live in an intensely mediated world, as philosopher Marshall McLuhan famously said, "The medium is the message".

Media Studies is now a well-established field of academic study. There is a long history of academic research in this area, dating back to the 1920s. This research draws on other academic disciplines, but has increasingly developed its own distinctive methods, concepts and theories. Indeed, Media education is an essential requirement for active participation in contemporary society: it teaches you to be a critical consumer of mass media and a more informed and engaged citizen.

Media Studies is not about watching films and reading newspapers, it is about actively engaging with media practice and production, social and cultural theory and critical thinking. This course will enhance your enjoyment and appreciation of the media and its role in your daily life by providing you with the ability to deconstruct, analyse, evaluate and create media texts. You will study the way media - TV, radio, film, news, music, publishing, social media, advertising, games - are constructed through technical, visual and audio codes to better understand the powerful and complex messages we receive as an audience.

You will also explore production processes and develop skills in photography and layout and design, using programmes such as Adobe Photoshop and InDesign, when producing your own print products. In the second year you will develop camerawork and editing skills in the production of audio-visual work including short films and music videos.

Drawing on the best academic traditions from the arts, humanities and social sciences whilst incorporating practical vocational skills, AS/A Level Media Studies offers a challenging and exciting course of study that will enable you to develop skills and knowledge that are crucially important to our contemporary world.

A Level

Philosophy of Religion & Ethics

You might not be quite sure what Philosophy is. Don't worry, many people aren't! In a general sense Philosophy, Religion and Ethics addresses some of the big questions that face human beings:

- What is the purpose of my life?
- What am I?
- What can I know?
- How should I live?
- Why should I do what is right?
- What are my obligations to other people?

We try to take these problems seriously and attempt to find real answers to them. This means attempting to apply rigorous logic, finding the right types of evidence and evaluating possible approaches. It is not about sharing opinions; it is about the meticulous analysis of the problem and scrupulous attention to detail.

The course will explore three areas of study:

- The Philosophy of Religion - In this unit we will consider the types of evidence that are offered for belief in God, we will evaluate both this evidence and evidence offered for rejection of religious belief. We will also consider the nature of religious argument by considering a number of possible approaches
- Ethics - In this unit we will learn how to evaluate a number of different ethical theories as well as considering the extent to which we are free to make our own moral choices and are responsible for our actions
- Buddhism - We will learn about the Buddhist tradition in some detail, studying the lives and contributions of important religious figures as well as the important texts and practices that form the basis of this philosophy. We will also learn about different types of Buddhism and the history of Buddhist practice

Our classes often involve lots of discussion, but in order to be able to discuss these ideas we have to read short but challenging texts. If you are the type of person who is accused of thinking too much, if Google can't answer your questions and if you like spending time wondering whether your real life is the one in your dreams and that you are reading this introduction in your sleep, then this course might be for you.



A Level

Photography

Photography is an art of observation. It has little to do with the things you see and everything to do with the way you see them. It is a powerful language which speaks to our emotions. It allows us to tell our story and show others our framing of the world around us.

If you enjoy creating photographic images, then the photography course will stretch and challenge you by providing an opportunity to engage in projects that encourage creativity, investigation, analysis and experimentation as a means of developing technical and expressive skills. The course encourages the development of your own visual language while improving your knowledge and understanding of the broad visual, cultural and theoretical contexts in which contemporary photographers operate.

You will learn a broad range of photographic and camera skills - both analogue and digital - utilising traditional darkroom and digital Photoshop techniques, working with industry-standard equipment and workspaces to support you from image capture through to exhibition. You will learn how to develop your contextual understanding and record your progress and workflow in the form of a sketchbook. The course will provide you with the skills and understanding for you to develop the ability to create innovative and individual work. It will teach you to appreciate photographic theory and practice and understand the work of important artists and pioneers in the history and development of the photographic medium.

AS/A Level Photography will offer you the chance to take risks, discover ideas and realise your creative potential. The course aims to create perceptive, resourceful and creative photographers with strong transferable skills that can be applied to a range of commercial and art based careers.

A Level

Physics

If you are interested in questions like “what happens if I go into a black hole?”, “what is a Higgs boson?” and “what happens if I travel near to the speed of light?”, then the A Level Physics specification will challenge you to consider these questions and many more.

Physics allows you to understand the fundamental structure of the universe from atoms (or smaller!) to galaxies (or bigger!) and how the matter within the universe interacts. You will discover that the same underlying physical laws can be applied from everyday situations such as electric circuits or theme park rides, to complex situations like particle accelerators or black holes!

In your first year of study you'll begin by exploring classical (Newtonian) mechanics, allowing you to understand how objects move and interact in terms of everyday forces. You'll then progress into explaining electric circuits in terms of current, potential difference and resistance, by considering the motion of charge carriers. You will also learn about material properties and how different materials behave when exposed to different forces before moving on to consider classical wave theory, followed by more contemporary physics, such as using observational evidence to argue for a quantum mechanical treatment of light.

In your second year of study you will build upon the concepts already met by initially considering more complex mechanics such as circular motion and momentum transfer, followed by a thorough analysis of electric and magnetic fields (and their applications). This content is then brought together to consider how particle accelerators and detectors function, and the particles we have discovered as a result. You then move on to studying a more mathematical representation of oscillations, followed by the physics of nuclear decay and thermodynamic systems, which are then brought together (with an understanding of gravitational fields) to consider how stars are formed. From this you will then consider star life-cycles (including neutron stars and black holes), astronomical measurements and galaxy motion, leading to the idea of an expanding universe - culminating in addressing current astrophysical concepts such as the Big Bang, dark matter, dark energy and the ultimate fate of the universe.



A Level

Physical Education

The Physical Education course is designed for those students who have an interest in the main theoretical components of physical education and also for those who display a high sporting level in at least one sport as a performer and/or coach. The course looks at anatomical, physiological and psychological theories and applies them to current sporting activity and performance. Everyone on the course will undertake personal study, where you will analyse sporting performance and develop ways to improve either your own personal skill level or that of others. You are also assessed in personal skill levels and in competitive practical situations.

This gives an introduction to physical education, including anatomy and physiology, acquisition of skills, and sport and society relating to participation in physical activity. The aim is to ensure that all the basic concepts are covered and then be able to apply these to practical situations to enhance performance and skill levels. The practical element of the course is covered through Non-Exam Assessment (NEA): Practical Performance in Physical Activity and Sport. This includes a practical assessment and written coursework in one activity as a performer or coach.

The second year of the course further develops the principles learnt in Year 1 and covers the topics of applied physiology, biomechanics and technology in sport. The NEA component in the second year of study includes assessment in one practical activity as either a performer or coach, and must be linked to the full competitive sporting environment. You will also complete a written coursework component based on a self-analysis of key skills in the chosen activity area.



A Level

Psychology

Psychology is the science of mind and behaviour. We look at people's motivations behind a range of different behaviours from a scientific point of view, looking at data in a rigorous way. We explore research into a variety of behaviours in an attempt to find answers such as 'Are some people just born evil?', 'How do you diagnose OCD?', 'Are each of the hemispheres of the brain responsible for different functions and behaviours and how would we know?'.

A successful Psychology student has an appetite for understanding how scientific principles can be applied to human behaviour. If you are interested in people and inquisitive about their behaviour, this is the subject for you. High-achieving Psychology students develop good analytical and problem solving skills, have a keen eye for detail and enjoy using evidence to develop academic arguments.

Psychology is unique in that it "fits" well with a wide range of other subjects from the Arts and Sciences. Whatever your career path, from medicine to law, media to business, sport to teaching or criminology, Psychology provides you with an excellent foundation and many skills.

The course involves an exploration of human behaviour and the mind. You cover topics ranging from biological explanations of behaviour to how interacting with other people can influence your behaviour. You use a scientific approach, looking at research evidence. In the second year this is applied to specific topics such as Schizophrenia, Gender and Forensic Psychology. You will learn by lectures, class discussions, working in groups, individual note taking and by carrying out your own research. It is fascinating, but hard work.

A Level

Sociology

Sociology is the study of society, explanations of social behaviour and an investigation into individuals' relationship with society. It focuses on the social world, to include the influence of families, mass media, education, religion, criminal justice system, social class, race and gender. Sociologists would claim that society is the single most important influence in your life, and would argue that our behaviour can be largely explained by social circumstances and experiences.

A Level Sociology will introduce you to points of view on society, including those which largely approve of the way it works (Functionalism) to those which argue for change (Marxism and Feminism). In Sociology much of what we investigate is open to interpretation; it is therefore desirable if students enjoy discussions and debates. You must also like reading and writing as these are essential elements of the course. By studying Sociology you will learn to think critically and independently about society and your place in it, gain the tools to think for yourself, and develop a critical and informed understanding of the world around you. As such, it is essential that you are interested in current affairs and you will benefit from keeping up to date with the news.

You will study a range of sociological theories, perspectives and methods in order to understand the nature of social life. You will answer questions, such as:

- Why do working-class students achieve lower GCSE grades than upper-class students?
- Why has the definition of childhood changed over time?
- Why are there many more men in prison than women?
- Why are some countries richer than others?

You will study the following key subject areas: Families and Households, Education, Research Methods, Global Development, Crime and Deviance and the relationship between Theory and Methods. Sociology is 100% exam-based assessment; there is no coursework.



See our **fantastic new facilities** being built at one of our information events. Check out page 57 for dates.



A Level

Spanish

Did you know that Spanish is spoken in 23 countries by more than 400 million people and that it is the second most important global language with regard to international communication? It is also one of the official languages of the European Community, the United Nations and Spain is one of the UK's most important trading partners.

The course at Callywith College will give you the opportunity to build on your knowledge of Spanish that you have acquired at GCSE. One aspect of the course will be to improve your language skills; you will learn vocabulary based on a variety of topic areas as well as grammar rules, which will enable you to make sense of the language and to use the language accurately.

You will develop all four language skills: speaking, reading, listening and writing through a wide range of materials, both inside and outside the classroom. Once a week, you will have a conversation session with one of our Spanish language assistants to help you improve your confidence in speaking. You will also have the opportunity to take part in one of our language visits to Andalucía, in the south of Spain.

The second aspect of your course will be to develop your knowledge of Spanish speaking countries and their culture. You will do this by studying various topics as part of your course, as well as a Spanish language film and book.

At the time of writing, the changes to this specification are still under review, which means that specific topic choices have not yet been finalised. However, we will be able to provide you with this information during all open events at College.



Level 2 Progression



UAL Level 2 Diploma

Art & Design

If you are interested in creative study, then the Progression 2 Art and Design course will provide you with a range of skills and knowledge of the art and design area.

On the Level 2 Art and Design you will develop practical art and design skills in drawing and painting, graphics, mixed media, stitch and three dimensional materials such as wire, as well as researching historical and contemporary art and design.

This course will develop your confidence to enable you to make personal creative choices through a range of themed projects. This will involve your discovery through the processes of making and designing within the context of art and design.

You will gain experience of working through project briefs with a variety of media, materials and processes in the areas of fine art painting and sculpture, design, graphics and textiles. The projects delivered will provide you with the opportunities to explore and develop your creative skills and knowledge.

During this course you will explore the potential of technology, a range of tools, processes, equipment and techniques. You will develop your knowledge and understanding by applying your learning and skills in a work-related context. These skills will include: team working, working from a prescribed brief, working to deadlines, presenting information effectively and completing administrative tasks.

You will research both historical and contemporary artists and designers to inform and inspire your ideas and solutions to provided art and design problems.

English and Maths up to Level 2 is included in this programme of study. You will study GCSE and/or Functional Skills to ensure that you have the entry requirements to progress onto a Level 3 course.

Level 2 Diploma

Business

Choosing to study the Progression 2 Business qualification is a great decision for lots of reasons, particularly considering the nature of employment within Cornwall. The qualification will prepare you for many different careers by equipping you with organisational skills, marketing knowledge, the ability to present your ideas clearly and financial skills. You will gain the skills and knowledge that will be valued by employers in many different sectors. In addition the programme will help you to progress onto the next level of study.

The qualification contains a range of core, mandatory and optional units to ensure that students learn the essential knowledge and skills so that they can progress onto further study (a more specialist Level 3 Extended Diploma in Business for example), or enter into employment.

In business, you would be aiming to move into entry-level roles, such as assistants in business administration, marketing, finance, human resources, sales and customer service.

Units you will study range from marketing to customer service. This is an exciting one year opportunity to study both business and travel and tourism before specialising at the next level.

BTECs are vocationally-related qualifications, where learners develop knowledge and understanding by applying their learning and skills in work-related settings. They are effective because they engage learners to take responsibility for their own learning and to develop skills that are essential for the work place. These skills include: team working; working from a brief; working to deadlines; presenting information effectively; and accurately completing written tasks.

The Progression 2 is the equivalent to two GCSEs and as part of this course you will also be enrolled on GCSE Maths and English Language as well as functional skills, making up a four GCSE programme of study.



Level 2 Progression

Health & Social Care

This qualification aims to give you the opportunity to develop the skills and knowledge that are used within the health, social care and childcare sectors. Units you will study include an introduction to working with children and young people, introduction to a healthy lifestyle, principles of health promotion and working within social care.

BTECs are vocationally-related qualifications, where learners develop knowledge and understanding by applying their learning and skills in a work-related context. They are effective because they engage you to take responsibility for your own learning and to develop skills that are essential for the workplace. These skills include: team working; working from a prescribed brief; working to deadlines; presenting information effectively; and accurately completing administrative tasks and processes.

You will study a variety of units including:

- Effective Communication
- Human Lifespan Development
- Human Body Systems
- Healthy Living
- Social Influences on Health
- Health and Social Care Values
- Nutrition

The BTEC Level 2 First Certificate in Health and Social Care gives access to a range of education opportunities, such as a Level 3 Diploma. Alternatively students could enter straight into employment within a care organisation.

Level 2 Progression

Information & Creative Technology

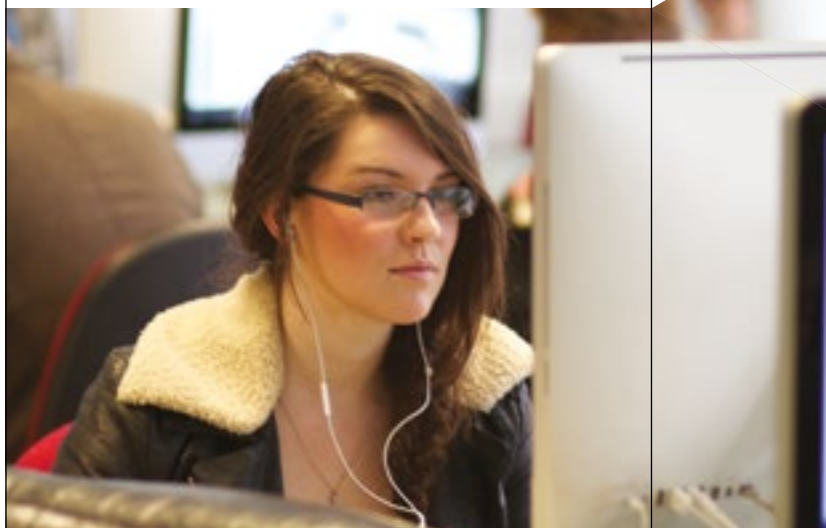
If you enjoy learning about Information and Creative Technology then the Progression 2 course in ICT will stretch and challenge you by providing valuable insights into how ICT is used in the world today. It is often the face and infrastructure of individuals, groups, businesses, organisations and events. If you enjoy working with images, using the Internet for research and like the idea of building your own website, this could be the course for you.

You'll start off by exploring how ICT is used in many different ways and understand how useful ICT can be in daily life. The ability to research effectively can save you so much time and develop your knowledge of what is required to make projects work successfully. You already use ICT in your personal life, so why not consider how it is used in business? We show you why it really is a necessity. Completing the course gives an ideal opportunity to use specialist software applications such as Photoshop Pro Flash and 'Kompozer', which you will use to build a website for your portfolio. You will also learn some coding that will give you an insight into how the professionals do things.

Then, you'll learn how websites are developed and understand the importance of high quality sites. Most companies today have their own website and there are many jobs today that incorporate the skills of website development.

A knowledge of what makes the computer work and what to look for when it doesn't is also valuable to you and you will cover this when studying hardware elements of the course. You will also experience a 3D printer and robotic arms working.

Later, you will discover the impact ICT has had on the world. ICT is constantly evolving and creates many career opportunities for the skilled professional.



Level 2 Progression

Sport

The Progression 2 Sport Pathway allows you to study the BTEC Certificate in Sport, and is broadly equivalent to two GCSEs. BTEC Firsts are vocationally-related qualifications, where you develop knowledge and understanding by applying your learning and skills in a work-related context.

This pathway will provide training and experiences for those intending to work in the sport industry and will provide the opportunity to develop a range of practical skills and techniques, personal skills and attributes essential for successful performance in working life in this area.

If you enjoy studying a variety of subjects chosen to help develop your confidence, understanding and abilities and then applying them in and out of the classroom, this progression could be for you. Units such as: Fitness Testing and Training, Practical Sport, Anatomy & Physiology, Planning and Leading Sports Activities, Sport & Active Leisure Industry and Sport & Active Leisure Industry are some of the units you will study over the one year course.



Find out **how to apply** on page 56.

You will learn through a range of methods including practical experiences and theory-based lessons. You will be taught in classroom lectures, presentations, practical sessions and group discussions.

All Progression 2 Pathways will include English and maths up to Level 2. You will study either GCSE or Functional skills to ensure that you achieve at Level 2. Skills in both maths and English will be of assistance in your future, supporting you with assignment writing, research, job applications, presentations, managing your own finances and interpretation of data, to mention just a few.





Level 3 Extended Diplomas

Level 3 Extended Diploma

Applied Science

Scientists use the same skills on a daily basis to attempt to solve current issues. This course is designed to give you a detailed understanding of aspects of science with an emphasis on the skills and knowledge used in the fields of forensic and medical sciences.

Over the two years of study you will develop the scientific knowledge and practical and problem solving skills to enable you to progress into employment or onto a range of Higher Education courses. You will study a range of core scientific units and specialist units with a particular emphasis on the knowledge, skills and techniques used in the vast fields of forensic and medical science. Throughout the course you will develop your scientific understanding and practical skills through a series of assignments and challenging investigations which utilise some of the techniques used by scientists in the workplace, including collecting evidence from crime scenes and analysis of evidence through chemical spectroscopy, fingerprint analysis, chemical and biological testing.

During your course you will complete a project on an area of science where you have to plan an investigation and conduct an experiment you have designed.

You will start by completing a Foundation Diploma in Applied Science (equivalent to one and a half A levels) in your first year. The first year will enhance your understanding of the key chemical and biological topics. You will relate your practical science activities to the relevant theory and develop your skills in laboratory experimentation, analysis of results and evaluation of methods - key skills for any working scientist. You will build a portfolio of practical techniques and use your knowledge and understanding to complete a series of assignments on which you will be assessed. You will complete the Extended Diploma in Year 2 (equivalent to three A levels) where your focus will be on units covering aspects of forensic science including crime scene investigation using forensic evidence and units covering aspects of medical science including medical physics applications, physiological investigations and diseases and infections.



See our **fantastic new facilities** being built at one of our information events. Check out page 57 for dates.



UAL Level 3 Extended Diploma

Art & Design

If you enjoy art and design and want to experience a broad range of creative activities, the Art and Design Extended Diploma will provide you with these learning opportunities. You will discover how artists, designers and makers see the world and learn how they develop and realise their original ideas in both gallery and commercial settings. You will be able to use art and design to communicate your innovative ideas effectively and realise your potential within the creative industries.

Your journey will begin with experimentation and development of essential art and design skills in all the specialist areas we offer. Your Diploma programme will combine a range of creative areas by themes, enabling you to discover your interest, including: digital, fine art, graphic design, contextual understanding, life drawing and textiles.

For your second year, you will choose a specialist pathway to extend your skills and understanding, and assist with the building of your portfolio for a Higher Education degree course, a foundation course or employment. A career within the creative industries could include: painter, printmaker, sculptor, graphic designer, illustrator, textile or fashion designer, photographer, jeweller, ceramicist, model maker, filmmaker or animator and many more related roles.

All your assignments will have broad starting points, allowing you to investigate and produce work based on your individual interests. You will use a visual journal/sketchbook to record and explain your thoughts, ideas and discoveries, and to follow your journey towards your unique outcomes as part of a substantial art and design project. It will enable you to clarify your longer-term goals through your choice of a creative pathway and future.

Art & Design: Photography

Photography is an art of observation. It has little to do with the things you see and everything to do with the way you see them. It is a powerful language which speaks to our emotions. It allows us to tell our story and show others our framing of the world around us. If you enjoy creating photographic images, then the course will stretch and challenge you by providing an opportunity to engage in projects that encourage creativity, investigation, analysis and experimentation as a means of developing technical and expressive skills. It encourages the development of your own visual language while improving your understanding of the broad visual, cultural and theoretical contexts in which contemporary photographers operate.

You will learn a broad range of photographic and camera skills - both analogue and digital - utilising traditional darkroom and digital Photoshop techniques, working with industry-standard equipment and workspaces to support you from image capture through to exhibition. You will learn how to develop your contextual understanding and record your workflow in creative sketchbooks. The course will provide you with the skills and understanding to create innovative work. It will teach you to appreciate photographic theory and practice and understand the work of important artists and pioneers in the history and development of the photographic medium.

Photography offers you the chance to take risks, discover ideas and realise your creative potential. The course seeks to nurture perceptive, resourceful and creative photographers with strong transferable skills, that can be applied to a range of commercial and art-based careers.

The UAL Level 3 Extended Diploma in Art & Design: Photography has been designed for those who want to study Photography full time, providing you with the skills, knowledge and understanding necessary to progress to degree level study in visual arts, into further education and training or into employment.

The course is delivered over 14 hours per week. There is an expectation that you should devote the same amount of time to independent study outside of the classroom. You will complete the Extended Diploma over a two year period.

Level 3 Extended Diploma

Business

Want to start your own business? Make your ideas happen? Create exciting advertising campaigns? Learn how to manage a team of professionals? You can start developing your career in this sector by studying a Diploma in Business. If you have ever wondered how a business operates in an ever-changing environment then the Diploma in Business is the course for you! It will provide you with an understanding of how marketing, human resources, accounts, operations, sales, project teams, management teams, directors and customer service interlink to achieve business aims and objectives.

The Diploma in Business will provide you with essential knowledge of how the UK environment impacts upon how a business plans and operates to ensure its success.

It will enable you to acquire vital skills and the critical awareness necessary for managing teams and creating value for a business, whilst preparing you for your career. The course can provide a pathway both directly into a career in Business as well as to Higher Education studies in this and related subjects.

There is a range of diverse optional units including: Recruitment and Selection, which will develop your understanding of the complex legal process involved in recruiting new staff, as well as the cost and time implications; Events Management, where you will plan and carry out your own business event, taking control of every aspect including gaining the finance required; Creative Product Promotion, which will further develop your understanding of marketing and, in particular, the creation of promotional materials. Each optional unit studied will encourage you to discover how the different functions combine in order to ensure operational success.

The course aims to give you a varied learning experience and will be a combination of a student-centred approach to learning, involving research for assignments guest speakers, lectures, group work and discussions and, where possible, visits.



Level 3 Extended Diploma

Children's Play, Learning & Development

As an early years educator your role will include providing a safe, secure and stimulating environment that enables children to reach their full potential. You will plan for a curriculum that is aimed at ensuring high quality education for children aged from birth up to seven years and eleven months.

A career within the early years sector can be challenging but equally very rewarding. As an early years educator you will hold many qualities and have the necessary skills to observe, plan and assess children's individual care and learning needs. This course will offer you the opportunity to develop those skills over a period of two years, both within the College and out in a practical work placement setting.

If you are looking to work with children and their families, and enjoy working in a challenging but highly rewarding environment then this course is for you. The course offers a range of units that provide opportunities for you to learn through a range of different activities including lectures, practical sessions in our practical-based work room and visits from outside agencies. You will also be expected to keep up to date with the current changes in the early years sector in line with government policy.

Assessment is continuous throughout the course and consists of written tasks, presentations, demonstrations and a research project. You will also be required to sit an external exam as part of the course requirements. This will aid your time management, organisational and research skills that contributes to effective practice when working within the early years sector.



Find out **how to apply** on page 56.





Level 3 Extended Diploma

Computing

If you enjoy learning about computers and Information Technology, then the Extended Diploma in Computing will be of great interest to you. Based on our hugely successful Extended Diploma for IT, this course has been completely revamped to cover the very latest subjects in Computer Science. Building on your existing knowledge, this course will stretch and challenge your IT knowledge and skills. Covering thirteen different subjects over two years, you will study a wide range of topics including the Principles of Computer Science, Computer Hardware and Networking, Digital Graphics and Animation, Computer Programming and Games Development.

You will work on a wide variety of interesting practical and theoretical projects. By the end of this course you will be confident in planning, designing and writing computer programmes, building websites, developing mobile phone apps, configuring and managing networks, and analysing and designing complex computer systems for business. You will understand how to configure and protect an IT system from attack and subsequent data loss. You will be able to describe the impact that IT systems are having on our world and how businesses are using the latest technologies to gain a competitive edge.

Upon successful completion of this course you will have a comprehensive understanding of modern Computer Science. You will be well prepared to enter the work place as an IT professional or to go on and study a Computer Science degree at university.

Lessons take place in specialist IT rooms with networked PCs. Your lecturers will be specialists in their field who will teach you through a variety of demonstrations, lectures and by helping you undertake a variety of practical tasks. You will have access to hardware and networking lab facilities for the practical parts of the course.

UAL Level 3 Extended Diploma

Creative Media Production & Technology

The media is a powerful entity which plays a significant role within society. The centrality of the media to human experience - from the conduct of everyday life, to the exercise of power, to the creation of culture - is inescapable. We live in an intensely mediated world, as philosopher Marshall McLuhan famously said, "The Medium is the message".

UAL Creative Media Production and Technology (CMPT) has been designed for those who want to study media full time and will provide you with the knowledge, skills and understanding necessary to progress to degree level study or employment in the exciting & dynamic creative media industries.

The course is delivered over 15 hours per week. There is an expectation that you should devote the same amount of time should to independent study outside of the classroom. There is also a one hour Tutorial slot. It may also be possible to study an additional A Level alongside this qualification.

You will complete the Extended Diploma in CMPT over a two year period. The course provides an opportunity for you to engage with a diverse range of media - TV, filmmaking, radio, animation, photography, graphic design, social media, marketing - often in the form of 'live' or 'real-world' briefs and assignments where you will explore, develop and test your creativity within a stimulating and demanding environment.

The course will provide you with opportunities to develop and utilise broad, transferable skills through encouraging an ethos of personal and professional development. We expect you to demonstrate initiative, independent inquiry, creative thinking, reflective learning, team-working, self-management, effective participation, problem solving and communication in order to reach your creative potential.





AIM Level 3 Extended Diploma

Games, Animation & VFX Skills

NextGen Skills Academy, a pioneering organisation backed by both government and industry funding, has launched its first course, the Level 3 Diploma in Games, Animation and VFX Skills with its partner awarding organisation AIM Awards.

The diploma will provide you with a Level 3 qualification, which is equivalent to three A Levels. As well as the delivery of relevant and up-to-date course content that has been written by the industry to replicate today's real-world work environment, you will have unprecedented access to industry mentors and industry-designed live briefs, set and assessed by a group of leading companies from the sectors being studied. Over two years, you will build a portfolio relevant to industry needs and as preparation for either working in these sectors or as a progression to Higher Education or higher Apprenticeships.

The essential feature of this qualification is that the content is being driven by industry. The design of the qualification has been in response to direct input from an industry representative group of employers from across the games, animation and VFX industries. The qualification structure has been designed on the principle of a two-year, full-time Diploma (1080 hours) that covers all of these elements: the fundamentals, industry working practice and technical learning about each and all of the games, animation and VFX industries. By studying all three areas, you will be able to make the connections between them and acquire transferable skills so that, towards the end of the Diploma, you will be equipped to make a more considered career decision.

Due to the content, the style of delivery and the assessment methodology that underpins this qualification, there are a number of possible progression routes available to you. The inclusion of research, presentation, essay writing and exams as assessment tools will ensure that, if you progress to a degree-level course, you will be well served with the acquisition of study skills that will support you to be able to cope with the independent learning that will be required of you at any Higher Education institute.

A clear understanding of how the games, animation and VFX industries work in practice, and experience of working to a specific industry brief in a way that replicates industry methods of project management, will ensure that any student choosing to progress their learning and career path through a Higher Level Apprenticeship or a Degree Apprenticeship will be able to start work immediately. Abilities in the basic concepts of art, maths and programming will be of great support to students, Apprentices and new employees whatever their progression route.

Health & Social Care (Health Studies)

Are you interested in working in a healthcare setting? A career in healthcare is challenging, rewarding, interesting and exciting, requiring you to have a variety of skills, knowledge and expertise to succeed. This course will provide you with a broad scientific base and an opportunity to study health care issues. It is also designed to prepare you to work in health-related careers in a professional capacity and provides the knowledge, skills and understanding required for working in a health environment or a progression route for Higher Education.

One of the great strengths of the Diploma is the integration of theory and practice, as you have the opportunity to apply what you have learnt at College to your work placements. The course aims to give you a varied learning experience and will be a combination of a student-centred approach to learning, involving research for assignments, visits, guest speakers, lectures, group work and discussions.

An experienced team of lecturers, many of whom have worked in the health and social care profession, will support your learning. You will need to prepare to work hard independently, carry out in-depth research and use a variety of information sources.

Throughout the programme lecturers and personal tutors will actively encourage you to develop as individuals and provide ongoing pastoral and academic support.

An important part of this course is work experience. You will have the opportunity to be placed in a variety of settings totalling a minimum of 200 hours, which is a mandatory part of the course. This will include at least three different settings including hospitals, dentists, early year's settings, residential homes for the elderly and day centres for clients with mental health problems or learning disabilities.

Please note: A clear DBS certificate will be required in order to complete this course.



Find out **how to apply** on page 56.



Level 3 Extended Diploma

Health & Social Care (Social Care)

Are you interested in working in social care? This career is challenging, rewarding, interesting and exciting, requiring you to have a variety of skills, knowledge and expertise to succeed. This course will provide you with a broad scientific base and an opportunity to study social care issues. It is also designed to prepare you to work in care-related careers in a professional capacity and provides the knowledge, skills and understanding required for working in a health environment or a progression route for Higher Education.

The BTEC Foundation Diploma in Health & Social Care is equivalent to one and a half A Levels and forms part of the Extended Diploma, which is equivalent to three A Levels. This is a full-time course which requires you to attend placement one day per week. It is essential that you progress to Year 2 to achieve the Extended Diploma for employment and university progression.

Throughout the programme lecturers and personal tutors will actively encourage you to develop as individuals and provide ongoing pastoral and academic support.

One of the great strengths of the Diploma is the integration of theory and practice, as you have the opportunity to apply what you have learnt at College to your work placements. The course aims to give you a varied learning experience and will be a combination of a student-centred approach to learning, involving research for assignments, visits, guest speakers, lectures, group work and discussions. An experienced team of lecturers, many of whom have worked in the health and social care profession, will support your learning. You will need to prepare to work hard independently, carry out in-depth research and use a variety of information sources.

An important part of this course is work experience; you will have the opportunity to be placed in a variety of settings totalling a minimum of 200 hours, which is a mandatory part of the course. This will include at least three different settings including hospitals, dentists, early year's settings, residential homes for the elderly and day centres for clients with mental health problems or learning disabilities.

Please Note: A clear DBS certificate will be required in order to complete this course.



Level 3 Extended Diploma

Sport & Physical Activity Development

This National Extended Diploma in Sport and Physical Activity Development includes elements of both theory and practical sport and will allow you to investigate the diversity within sport, health and the leisure industry.

The course will teach you to apply your sporting knowledge, as well as test your practical ability, by covering a range of units including Sports Coaching & Leadership, Fitness Testing and Programming, Sports Development and Practical Sports Performance. During the course you will take on the role of being employed within the sport and active leisure industry when completing assignments and activities. Each assignment will be based around a scenario which reflects tasks/projects that sports employees would be undertaking in the workplace. For example, a health fitness instructor conducting client health and fitness assessments.

Classes are taught through classroom lectures, group discussions as well as a variety of practical sessions using the extensive facilities at the College, including a purpose-built sports hall and 3G astro. There is also an opportunity to take part in industry recognised additional qualifications which will enhance your experience, skills and employability.

The course will particularly suit you if you enjoy learning in a practical environment, but also stretch you academically. It is an ideal route if you want to pursue a career in health and fitness, sports coaching or teaching. It is broadly equivalent to three GCE A Levels.



Academies

As a full-time student you could join one of our Academies. These have been set up to encourage development and excellence. Whether your interest is sporting, academic or artistic, we have created programmes and support to help you excel.

As part of any Academy you can expect to enjoy success during your time at Callywith College, but the skills you acquire will stay with you as you progress to university, career and into life as an enriched individual. Academy activities are included into your timetable, enabling you to access as much as possible without interfering with your studies.

Please note that Academies can only be taken in conjunction with a full-time programme of study.



Academic Academy

Do you enjoy being introduced to new ideas, or want to learn about topics beyond the curriculum? If so, the Academic Academy is for you!

The Academic Academy is a 30-week programme of lectures and seminars designed to stretch, challenge and provide support for students who want to apply for selective universities. It is taken alongside your full-time programme and only requires a commitment of two hours a week. The programme is fun and exciting and aims to increase your intellectual curiosity and confidence in ways that will support applications to the most competitive universities. We will introduce you to new ideas and new ways of looking at the world: every Wednesday afternoon you will have a lecture followed by a choice of seminar.

"I have really enjoyed going to the Academy. I thought that all the lectures were interesting and informative and I particularly enjoyed the chance to continue learning about subject areas that I had rejected when choosing my A Levels."

Presentations are given by our own staff and external guests. Previous speakers at Truro and Penwith College included a Lord, an Oxford professor and Director of Experiments at CERN. Lectures are cross curricular and cover a range of topics including science, literature, maths, culture, gender, philosophy, religion, history, art, psychology and politics. After the lecture you can choose from a number of seminar groups.

These include a follow up discussion on the presentation, a debating group which enters the Oxford and Cambridge Union debating competitions or stretch and challenge activities in science and mathematics.

"I really enjoy the Academic Academy, especially meeting new people in a less formal environment in the seminars."

The Academy is aimed at students who will meet the post 16 national gifted and talented criterion of achieving 58 points in their best eight GCSEs (six A grades and two A* grades or better at GCSE). However, we are aware that sometimes GCSE grades do not reflect your true ability, so this is not a rigid entry requirement. It is more important that you are excited by new ideas and by the opportunity to be stretched intellectually.

Football Development Programme

The Football Development Programme caters for a range of abilities giving the opportunity to play in one of the College teams either at Callywith or Truro. Callywith students will be able to benefit from Truro and Penwith College's new initiative for 2016 with the introduction of a partnership with Chelsea FC Foundation. This exciting venture will give participants the opportunity to gain an outstanding education whilst being part of one of the most comprehensive football development programmes in the country. The football training programme will closely mirror that of full-time professional players and will be based on Chelsea's philosophy of using the power of football to develop the next generation of sporting professionals.

The coaching methodology will be based on the FA's Four Corner Model and will include a strength and conditioning programme, support with nutrition and hydration, and advice on sports injuries through our physiotherapy clinic. This comprehensive educational initiative is designed to inspire students to achieve their academic and personal development goals through the power of sport.

Players who are not selected to be part of the above programme will have the opportunity to compete for places in any of the teams who play weekly. There will also be the opportunity to play recreational football through the college Health, Wellbeing and Sport programme. Players will have up to six hours a week of football-related activities, which will include theory sessions, coaching, fitness sessions, skills work and post-match analysis, in addition to competitive matches.

The College enters teams in all major ESFA and Association of Colleges Sport leagues, cups and tournaments, as well as the Cornwall Schools Leagues and Cups, and friendlies. There are normally more than 15 games per season depending on the level of team and success in the cups. Footballers aiming for the top of the game will work with top UEFA - A and B licensed coaches and use some of the best facilities in the region. Players will also be given the chance to develop leadership, coaching and officiating skills through additional qualifications and experience in local schools. There may be the opportunity to participate in a variety of trips and tours with a focus on playing and developing skills. Past tours have included the Sanix World Championship Tournament in Japan, Valencia CF in Spain as well as a range of English venues. In 2015 & 2016 the team were invited to play in the Dallas Cup, USA.

Truro and Penwith College Players' Honours

- 2013 - Harry Evans Final BCS England trial
- 2013 - Joe Stone and Harry Evans SW Colleges team Alumni
- Cody Cooke was signed on a Semi-Professional contract with Truro City
- James Ward represented Welsh Universities v England.
- Kieran Conibear-Trathen & Danny Carne signed professional contracts with Bodens BK in Sweden.
- Chloe Richards has recently been voted top female player in the North American Colleges League (at University of Alabama)

Medics' Academy

The Callywith College Medics' Academy is run in partnership with Peninsula Medical School students as part of the Widening Access to Medical School (WAMS) initiative.

This is a wholly student-led organisation with the aim of informing, encouraging and inspiring students into medicine.

The Medics' Academy prepares students for a future application to a degree in medicine.

Term 1

The work covered in this term will build your awareness of what universities look for in students who apply to medicine. This will include:

- The academic qualifications needed and the use of university entrance tests
- The relevant work experience needed
- The personal qualities they seek, and how to evidence such qualities
- The link between academic study and medical issues/ethics
- Additional qualities that the universities will assess
- An appreciation of what a degree and career in medicine entails

Lectures delivered include external speakers from a range of medical schools and relevant disciplines as well as College staff.

Term 2

Work covered in this term will include:

- A course delivered over the term by the WAMS students in years four and five at the Peninsula Medical School. Through individual sessions and group work the course will address and take forward the foundation work covered in Term 1
- A course delivered over the term, which will address the breadth of work experience needed for an application to medicine

Term 3

The work covered in this term will prepare you for your actual application to medicine, which will take place at the start of Term 4. This will include:

- Revision lectures for the university entrance exams for medicine, which include the UKCAT and BMAT tests
- Lectures to support you in writing your personal statement for an application to medicine
- Small group sessions run by the Peninsula Medical School WAMS students to prepare students for an interview at medical school
- Lectures on how to optimise your choice of medical school in relation to your individual strengths



See our **fantastic new facilities** being built at one of our information events. Check out page 57 for dates.

Netball Academy

The Netball Academy caters for a range of abilities, providing the opportunity to play in one of the College teams.

Most players tend to play for local clubs, many of them in regional leagues, although the third team tend to play more for the social side of the game and are not always connected to local clubs. However we are proud that many players have progressed from third team status to first team over the two year programme.

The Callywith College Netball Academy provides fixtures where possible for our squads with local sides, schools competitions and in the Association of Colleges Leagues and tournaments. Our teams play in the AoC South Superleague, AoC SW 1 League and AoC SW 2 League.

Players have the opportunity of netball-related activities including work on skills, tactics, fitness, match play, and match analysis. All students have the opportunity to develop their own personal performance. There is a real club feeling to the Academy with a friendly atmosphere where everyone, regardless of experience or ability, is valued. Students are also encouraged to be involved in coaching and umpiring opportunities.

During the summer term many Netball Academy players help to run a Little League for the local primary schools. The players gain experience in coaching and leadership. Some students also gain experience working in a local secondary school assisting with coaching their school teams.

Training for the Academy starts during the summer holidays. Players attend one day a week giving them an opportunity to develop their skills, fitness and match play, and also helping them to make new friends before the College year starts in September.

Truro and Penwith College Team honours

- 2011/12 BCS Superleague South Winners and BCS Superleague National Final Runners Up
- 2011 - 2014 Cornwall County Netball U19 Champions
- 2011 - 2014 British Colleges South West Champions
- 2012/13 U19 South West Schools Champions
- 2015 - Bronze Medal winners at AoC National Finals
- 2016 - Cornwall County Netball U19 Champions
- 2016 - Super League Playoff Winners

Rugby Academy

The Rugby Academy caters for a range of abilities giving the opportunity to play in one of the teams at Truro and Penwith College. With more than 80 students in the Academy across the Colleges there are teams playing in over 70 fixtures and tournaments per season.

All students will have the opportunity to compete for places in any of the teams which play weekly, although players in the first team squad will normally be of county standard or higher.

Players will have up to eight hours per week of rugby-related activities, which will include theory sessions, coaching, video analysis, fitness sessions, skills work and weight training. In addition to this there is an extensive fixture list on Wednesday afternoons, where games are played both locally and nationally at U18 and U19 levels.

The College competes in the AASE league along with the other premiership academies (Wasps, Leicester, Sale, London Irish and Gloucester), the Association of Colleges Sport Leagues and Cups, as well as friendly matches against local schools and colleges. In recent seasons the College has won the Daily Mail Cup, British Colleges U19 Knock-Out Cup, National 10s and 7s, South West Colleges League and Samurai 7s. The most recent success was winning the AASE League Plate at Allianz Park in 2014 and were AoC Premier Cup Finalists in 2016.

The Academy has also toured to South Africa and Dubai, as well as competing at The Sanix Junior World Rugby Tournament in Japan in 2010, 2012 and 2015. The College were finalists in both tournaments, where the best teams from South Africa, Australia, France, Canada, Tonga, Fiji, Korea and Japan competed making them the highest placed British team since the tournament began. Due to these successes the Truro College Rugby Academy was invited for the fourth time and travelled to Japan in April 2016 for the Sanix Youth Championships.

The Cornwall RFU has been very successful in developing players in the under 16 age groups. These players at post-16 have been faced with difficult choices. Often they have left the county to relocate and continue with both their rugby and their education. This joint initiative between Truro and Penwith College and Exeter Chiefs' Rugby Academy provides players with the real opportunity of a first-class education, coupled with first-class rugby coaching, whilst staying in Cornwall. As well as these links with Exeter Chiefs many players will also play for Cornish Pirates, Plymouth, Redruth and the Cornish All Blacks in the National Leagues.



The Low-down

Information for new students

The College Campus & Resources

The College Campus

Mac suites and media studios are just some of the facilities you will find around the state-of-the-art, purpose-built campus to enhance your studies. There are numerous subject-relevant labs, classrooms, studios, performance space and IT suites that you would expect from an association with one of the top colleges in the country.

You can use our theatre and studio spaces for drama performances or, if your interests are more behind the scenes, our technical theatre equipment forms a great learning tool. As you enjoy the arts you will be supported by our dedicated technicians. Due to our excellent facilities, there is a varied programme of performances, workshops and external classes across the College as a whole, which you will be able to access.

We have excellent sports facilities which you can access during the day. There will be a well-equipped sports hall for a range of sports and our new 3G Astroturf pitch will no doubt play host to many of your outdoor sporting achievements.

Through our libraries and IT suites you will have access to a comprehensive range of contemporary books, journals, audio-visual and online materials that will provide inspiration for studying and improve your results.

Learning and leisure are blended successfully. There are cafés and social spaces across the campus to enable you to enjoy your time outside of taught classes.

Access

The buildings at Callywith College are almost unique amongst colleges because the facilities are accessible to all students. All parts of the College may be accessed by people with limited mobility and within the College there are lifts designated for their use.

Refreshments

Callywith College has a dedicated eating area where a wide variety of reasonably priced meals, sandwiches, drinks and snacks are all available. Details of opening times will be published in the student diary, available at the start of the academic year. The College operates a cashless catering system.

Learning Centres (Libraries & IT Suites)

The College has many Learning Centres right across the campus. These are areas where traditional printed resources sit alongside our expanding electronic provision. The open-access computers in each IT Suite offer a wide range of software and there are staff available to support your use of the facilities.

Necessary books are provided by the College and must be returned in good condition. Students are asked to pay a resources deposit which will be refunded if all text and library materials are returned. The Learning Centres hold relevant collections of books, journals, DVDs and CDs, and there is increasing electronic access to books, as well as online journals and databases via the College Intranet Virtual Learning Centre.

Information Technology

The College has a large number of computers capable of using an extensive range of software, available for students to use on a drop-in basis. Students are expected to improve their awareness of, and skills in, information technology (IT). There are many IT workshops with staff who can support you in your use of IT. The College has campus-wide Wi-Fi which enables students to access the Internet and complete College work using their own network-enabled device.

College Shop

Almost all of the materials needed for your course should be available through the shop. Prices are very competitive compared to retail outlets. Products available include photographic, electronic and computer consumables. It also has a wide range of art and stationery materials. All money for trips and visits is collected here.

Support Services

GCSEs & Functional Skills

All students yet to achieve GCSE Grade C or above in English and/or maths will have to study an appropriate level course as part of their programme of study at college. This will be either GCSE or Functional Skills and will be determined by previous qualifications and an initial assessment. For students who have already achieved a grade C there are opportunities available to improve to a higher grade. In many cases progression opportunities will be dependent on achievement of English and Maths.

Students can access this type of programme by speaking with their Programme Team Leader (PTL).

Learning Support

Many students find they need support with their course at some point. Our friendly tutors can work with you on a one to one, small group and/or workshop basis on literacy, numeracy, revision skills, exam technique and essay writing. Whether you need regular support or just a one-off, we can tailor to your needs through individualised targets and sessions scheduled to suit you. Simply visit our staff in the Learning Centre to discuss your options.

The Learning Centres are a learning resource provided for all students; these multi-purpose, open access environments enable students to study at a pace and style appropriate to their needs.

Each Learning Centre is equipped with computers and printers and staffed by friendly learning assistants and e-learners who can help you with general queries, finding/accessing appropriate resources, and IT support. These are interactive, comfortable working environments so feel free to pop in to discuss what's available in more detail, we are here to help.

Tutor Support

At Callywith College you will get to know many members of staff and other students easily. You will be assigned a tutor who will usually be one of the people who teach you. Your tutor will get to know you well and will usually be the first person you go to if you need advice or help. You will also join a tutor group of students for which a senior member of staff will be responsible.

Student Services

If you are in need of advice, guidance and support, the Student Services team is dedicated to helping you. We want you to successfully complete your course and our professional team of staff will work with you, to support you in progressing into your future career or into Higher Education.

Careers Guidance

We have a commitment to offer impartial, supportive, timely and informal careers guidance to all students. Students have entitlement to careers education and guidance from tutors and course lecturers, PTLs and the careers adviser. We conduct individual careers interviews with students and offer workshops to tutor groups.

Students have the opportunity to discuss their personal progression routes and receive support in making decisions appropriate to their needs. You will find a range of careers literature and software available in the Student Services area. College careers staff are well-qualified, receive regular training and participate in many initiatives in this fast changing field.

Student Support

Support given is wide ranging and any problems experienced by students during their course, either personal or academic, will be addressed as quickly as possible.

Mental Health, Welfare & Counselling Support

If there are any issues that a student feels they need advice and support with, such as anxiety, relationships or drugs and alcohol they can see a member of the Student Services Team. They can also advise on benefits and help with housing matters. Additionally, students can also talk to a mental health nurse and safeguarding person within the team. Tutors will also support students with any of these matters.

Some students, whilst studying, may experience emotional and personal issues that would benefit from sharing with a trained counsellor. Callywith College offers a completely confidential counselling service which is free of charge to students.

Callywith College Bursary Fund

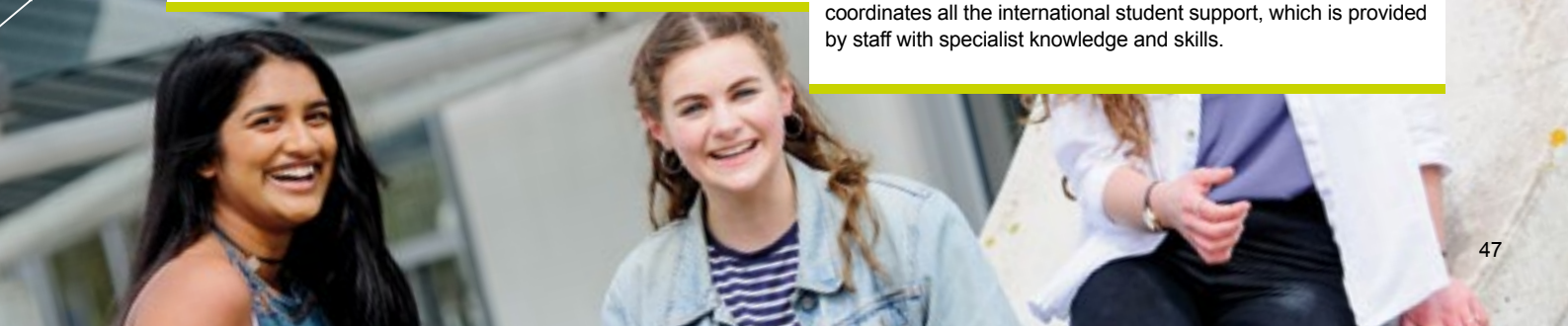
This fund is to assist students with travel, essential equipment and trips. Applicants are means tested. Forms can be collected from the Student Services area.

Attendance Advice

Advice is given by Personal Tutors on procedures to keep your attendance record accurate and up-to-date.

International Students

Callywith College aims to enrich the student and community experience by increasing the number of overseas students studying here in Cornwall. There will be an induction day for international students before the start of term. Student Services coordinates all the international student support, which is provided by staff with specialist knowledge and skills.



Equality & Safeguarding

Equality of Opportunity

Callywith College is committed to meeting its duties contained in the Equality Act 2010. We aim to create a culture of inclusiveness and to challenge discrimination, taking positive action in order to remove barriers to the educational and personal progression of individual learners. To achieve this aim the College will not tolerate unfair or unlawful discrimination.

The College's Equality, Diversity and Inclusion policy and commitment to the Investors in Diversity standard, demonstrates that the College will seek to remove any existing barriers to all staff, students, governors and visitors, irrespective of age, disability, gender reassignment, marriage or civil partnerships, pregnancy and maternity, race, religion or belief, sex and sexual orientation.

Callywith College endeavours to promote an inclusive working and learning environment, which supports the individuals within its community irrespective of their background. The College aims to promote equality of opportunity by providing full and equal access to all students who can benefit from its provision, and by encouraging and enabling all members of the College to build and contribute to a society which values cultural and social diversity. A focus on learner voice and involvement in instigating change reflects this commitment.

Learning Difficulties & Disabilities

The College welcomes applications from students with learning difficulties and disabilities. Students can access a wide range of externally accredited and College certificated courses through programmes that are developed to meet individual needs. Learning support and specialist equipment are provided as required.

Safeguarding Children, Young People & Vulnerable Adults at Callywith College

The College is committed to safeguarding and promoting the welfare of children, young people and vulnerable adults and expects all staff and volunteers to share this commitment. This means that we have a child protection and safeguarding policy and appropriate procedures in place. All staff, including volunteers and governors, must ensure that they are aware of these procedures.

Sometimes we may need to share information and work in partnership with other agencies, when there are concerns about a child's, young person's or vulnerable adult's welfare.

We will ensure that our concerns about our children, young people and vulnerable adults are discussed with their parents/carers first (as appropriate); unless we have reason to believe that such a move would be contrary to the child's, young person's or vulnerable adult's welfare.



College Policies & Procedures

Student Life

Callywith College has very few rules, but both you as a student and all College staff work within the Charter to ensure everyone has the most positive and beneficial experience possible.

Before you become a student at Callywith College we aim to provide you with information about the courses we offer and the practicalities of being a student here. We will let you know about transport, finance, equipment and progression. If you have any additional needs we will give you details of the individually tailored support you can expect at Callywith College.

Once you apply, you can expect us to process your application fairly and efficiently and, normally within three weeks of receipt of your application form, provide you with a date and time for an interview. The interview is a good opportunity for both you and the College to ensure you are choosing a course that is right for you and you have all the information you need. After your interview, a decision about a place at Callywith College can usually be made.

When you start as a Callywith College student we will give you a thorough induction. You will receive a lot of new information including details on learning resources, dates, security, health and safety, safeguarding, attendance, assignments and College rules, procedures and policies. You will also be given a student handbook and diary which will give you a record of all the information for you to refer back to.

As a student at Callywith College you will accept more responsibility for your work and your progress than during your time at school. Many courses require you to work extensively on your own in College and at home. First-class study facilities are available in the College and successful students use these effectively. We will help you to organise your work, but you will be responsible for ensuring that you meet deadlines. The College requires that you attend regularly and punctually, and that you meet the demands of your course. We hope that you will enjoy your time at Callywith College and the staff at the College will work with you to help you achieve success.

College Day

The College day for full-time students will usually last from 9.15am to 4.15pm. Students will have more private study time than is the case with pupils in school.

The Callywith College Charter

Just as we expect our students to aim at achieving a high standard, so students should have expectations that the College will deliver high quality learning programmes and services. The College Charter, available from receptions and online, sets out in more detail the standards we will achieve.

Drugs, Alcohol & Smoking Policy

This College does not condone the use of drugs or alcohol. We seek to educate students about drugs and alcohol-related issues and provide help to those who ask for it. All Callywith College sites have a no smoking policy except within the designated smoking areas.

Data Protection Act

Any information that you provide during the application process is protected under the 1984 Data Protection Act.

Fees

If you are aged 16 to 18 years and a student under the age of 19 on 31 August, you will not normally be charged fees for tuition. Overseas students will be liable for fees and details will be available from the College.

Examination Fees

Full-time students who do not pay tuition fees would not normally be asked to pay for examinations which are taken as part of the course, with the College's approval. Students who pay tuition fees will need to pay their own examination fees.



Frequently Asked Questions



What is a 16-19 Free School?

Sixteen to 19 free schools are stand-alone educational institutions for the education of 16 to 19 year-olds. They are funded directly by the EFA on the basis of the national funding formula for 16 to 19 provision.

Why is Callywith College a Free School?

Truro and Penwith College has chosen to work with the Department for Education to deliver Callywith College as a Free School. Callywith College will be part of the Truro and Penwith College Bodmin campus. This will ensure that the College has the necessary support both educationally and financially to deliver the proposed vision.

Is Callywith College part of Truro and Penwith College?

Callywith College is run in association with Truro and Penwith College, which also owns the Callywith College site. Senior staff from Truro and Penwith College will lead Callywith College, implementing common systems and processes, ensuring the same high levels of quality, so that students will enjoy the same outstanding experience.

Will Callywith College definitely open in 2017?

The College will open in August, 2017. Opportunities to visit the campus and to see its development will be offered throughout the year before opening.

Why should I choose Callywith College?

There are many reasons why Callywith College is a great place to study after you have finished school. See our section 'Choose us' on page 6 of this prospectus for information.

My school has a sixth form, do I have to stay there?

Although you now have to stay in full-time education until the end of the academic year in which you turn 18, it's your choice where you want to study.

I can't decide what type of course to take; what might help me choose?

The 'Your options explained' section in this prospectus gives details about the types of courses we offer and what they entail. There is a wide range of A Levels and vocational courses to choose from, so there is bound to be something to suit you here.

Can I go to university if I don't take A Levels?

Vocational courses provide a proven route to university providing the subjects are compatible. College open events are a great opportunity for you to find out whether the course you want to follow is suitable for applying to university, as is your interview.

Do courses have entry requirements?

Yes, all courses do. Please refer to the 'Your options explained' section for details of what grades you need to start your chosen course.

Can I just enrol in an Academy?

No. Academies are offered only in conjunction with a full-time programme of study. They are intended as a supplement for, and not an alternative to, the qualifications the College runs.

How do I apply for a course?

The applications process is covered in the 'How to apply' section of this prospectus. You firstly complete an application form. These can be obtained from schools in Cornwall or by telephoning the College. They can also be downloaded from the College website.

When can I apply and when will my interview take place?

You can send in your application from September onwards. Interviews take place at different times for everyone; this is because each application is looked at and assessed individually. Don't panic if your friend has an interview date sent to them before you do - you haven't been forgotten!

Are there limited places at Callywith College?

There are a maximum of 660 places for September 2017. Offers will be made at interview and a place can be secured by accepting the offer.

What questions will I be asked at my interview?

Your interview is not a pass/fail test. It is a consultation where you discuss your plans for your future both in and beyond education. Your course choices are looked at relative to your own aspirations, to ensure that the two things match up reasonably well. Parents or carers can attend their child's interview if they wish. At the interview, once a suitable course has been agreed, you will be given an offer card. You need to fill this out and return it to us as soon as possible.



What if I don't get the GCSE grades I was expecting?

Firstly, don't panic! You will be asked to attend an advice day, to discuss whether pursuing your selected course is the right choice for you, or if another course might suit you better in light of your recent results.

How will I get to College?

Subsidised travel is available to full-time students under the age of 19 who live further than three miles from the College. A College transport system is also available for those who do not qualify for this; a bus pass can also be arranged for First routes. Buses on a direct pickup route should run to the College daily.

What is Study Plus?

Study Plus is an opportunity to further your current interests, or develop new ones. Courses on offer can assist you in gaining further qualifications such as the Duke of Edinburgh Award, or they can simply be a way for you to enjoy your hobbies. Further information can be found in 'The low down' section.

How can parents/carers get involved in running the College?

The College will be seeking to appoint two parent governors once open. This will be through an election process held in the Autumn term. Parents/carers will also be invited in to the College in September to meet key staff and ensure their full involvement throughout their child's time at the college.





Your Journey to College



Callywith College is working in partnership with Cornwall Council and Sustrans (the UK's sustainable transport charity - www.sustrans.org.uk) to promote active, sustainable travel to College and to reduce congestion.

Choosing to travel on foot or by bicycle reduces air pollution and traffic congestion, whilst saving you money and keeping you fit. Using public transport also helps reduce your carbon footprint, so check out your travel options below and play your part in making Bodmin a better place to study.

Walking & Cycling to College

Walking or cycling is a simple, environmentally friendly and free way to fit exercise into your day. The town centre is only a 10-15 minute walk or cycle away, so why not beat the traffic and give it a try? There is covered cycle storage at the campus and showers/ changing facilities are available.

Dedicated traffic-free routes serving the town's colleges are marked on the Bodmin active travel map www.cornwall.gov.uk/activetravel. Other traffic-free connections to College include the Camel trail from Padstow, Wadebridge and St Breward. www.cornwall.gov.uk/cornishway

Buses

Callywith College will be served by public service buses from the town centre. In addition, there are a number of College buses that travel directly onto campus at the start and the end of the day serving routes from main towns in the east and centre of the county.

Students may be entitled to a Cornwall Council or College bus pass, which also offers unlimited travel across the county. Subsidised travel is available to students from low income families.





Research shows that regular adult cyclists have **fitness levels of someone 10 years younger**

Source: Sustrans (2007) the health benefits of walking and cycling to school.

Trains

Frequent trains serve Bodmin Parkway station with connecting buses to Bodmin. Alternatively, why not bring your bike on the train and use the cycle routes between the station and the College (approximately 25 minutes' ride)?

You'll need to make a booking for your bike if it's a high-speed train, otherwise the carriage of bikes is at the operator's discretion.

On average, commuters that **car share save themselves £100 a year** compared to driving alone.

Source: DFT (2008).

Driving to College

Callywith College promotes the use of sustainable travel to get to your place of study. However, we recognise the fact that sometimes car travel is unavoidable.

Carshare Cornwall provides a free service for passengers and drivers to link up and share car journeys. Click on the 'cost calculator' on www.carsharecornwall.com to work out how much you could save.

Students that wish to drive to College need to apply for a parking permit. These are issued on a case-by-case basis. Parking spaces are prioritised to those with the greatest need and may be limited.

Lifelong Learning

We are committed to lifelong learning.

Callywith College is the foundation for your life of learning and by studying with us you can progress on to Higher Education degrees, foundation degrees, HNDs, education qualifications or a Foundation Art and Design course. Our partner, Truro and Penwith College, offers a range of Part-time Courses, Business Services and Higher Education opportunities accessible to all ages. If you are returning to education, the Access to Higher Education courses provide an ideal progression route.

Foundation Art & Design

Are you keen to develop your creative skills, explore a wide range of specialist areas, learn new techniques, and challenge your imagination to discover where your creative talents lie? This Foundation Diploma course provides a year of practical study, enabling you to make informed decisions about your future prospects as an artist or designer, as well as possible applications to degree courses.

The course is broad-based, starting with a series of assignments that embrace a wide range of approaches, materials and techniques. As the year progresses you will specialise in the area of your choice. The emphasis throughout will be on research experimentation and creative exploration. Through a Contextual Studies Programme you will study the work of other artists and designers relevant to your own studio practice, which will be supported by an (optional) study trip abroad to visit museums and contemporary galleries. Life Drawing is taught on a weekly basis in order to help develop your observational skills.

You will be fully supported through the degree application process with preparation for specialist presentations and the development of portfolios of work.

Entry Requirements

Students will normally be 18 years when starting this course, having achieved A Level qualifications or an Extended Diploma within art-based subjects. Mature students with or without formal qualifications are welcomed. All applicants are interviewed with a supporting portfolio of creative work.

This course is also offered as part time over a two year period. For an application form please contact Truro College on 01872 267000.

Access to Higher Education

A great course to get you back into studying.

Truro College

- Access to Higher Education: Humanities, Teaching and Law
- Access to Higher Education: Nursing/Human Sciences
- Access to Higher Education: Psychology, Counselling & Social Work
- Access to Higher Education: Science
- Access to Higher Education: Teaching

Penwith College

- Access to Higher Education: Creative Arts
- Access to Higher Education: Humanities
- Access to Higher Education: Health and Social Care

All students will study the core subjects in addition to their chosen pathway: Preparation for Higher Education (study skills, oral communication, evaluation) and information technology.

Access to Higher Education courses are designed to give students the necessary grounding to succeed in Higher Education. The majority of British universities will accept Access to Higher Education courses as an alternative to A Levels and other more traditional routes. Students are usually aged 19 or over at the beginning of the course and all applicants will be expected to attend an interview. The majority of students who have followed Access programmes at Truro and Penwith College have been successful in gaining places at colleges and universities of their choice. Courses normally start mid-September and end in mid-June. Taught hours will be approximately 15 hours per week depending on the pathway chosen. Courses usually run over three days and offer parent friendly hours (ie 9.30am to 3.15pm). For a leaflet please contact Truro College on 01872 267000 or Penwith College on 01736 335000.

Truro & Penwith College Business

The Truro and Penwith College Business team works with businesses across Cornwall to deliver high quality learning solutions for their staff. The team is based across all Truro and Penwith College sites including Penwith, Truro, Newquay and its four-storey Training Centre in Truro City Centre, Haven House. The business training is delivered by a range of expert delivery staff in departments across the College.

We aim to improve business and individual performance through working in partnership with businesses to:

- Bring talent into businesses through traineeships, apprenticeships and individual training programmes
- Provide professional qualifications and courses for individuals to progress their careers
- Design bespoke training delivered where and when a business needs it

Support for the business could include management training, business skills seminars, professional qualifications, tailored training, apprenticeships, coaching and mentoring and development programmes incorporating groups of staff. The College has a huge variety of courses to support businesses ranging from engineering to hospitality, child care to construction, health and social care to IT and carpentry to leadership development. The team are here to help provide advice and support to individuals and businesses in order to upskill and progress in future careers.

If you are a young person and would like to find out more about Apprenticeships, our team of experienced advisers are available to discuss them with you. They can also show you how to access the Apprenticeship Vacancy Matching Service to help you to find the right job. You can download our free guide on how to get an Apprenticeship from our website.

If you are a parent or an employer, we can explain how Apprenticeships work and the benefits that businesses and Apprentices achieve through the programme.

For further information and advice please contact:
Truro and Penwith College Business
telephone: 01872 242711
email: business@truro-penwith.ac.uk
web: www.truro-penwith.ac.uk/business

Higher Education

Local university courses with both full-time and part-time routes are available at Truro and Penwith College.

Do you want to gain a full degree, a foundation degree or an HNC/D? If so the College offers a wide range of university courses delivered in a friendly environment with excellent teachers and modern facilities. You will be taught in small groups and receive significant personal support from our team of tutors and support staff.

Top-up degrees: BA (Hons) Applied Media, BA (Hons) Education & Training, BA (Hons) Human Behavioural Studies, BA (Hons) Silversmithing & Jewellery, BSc (Hons) Applied Computing Technologies, BSc (Hons) Applied Social Science, BSc (Hons) Applied Sport & Health Science, BSc (Hons) Archaeology

Foundation degrees & HND/C: Subject areas include: Art & Design, Business & Law, Education, Community & Counselling, Health, Humanities, Initial Teacher Training, IT & Computing, Media & Photography, Science, Sport & Public Services, ITT courses and University short courses.

For more information about the exciting range of Higher Education opportunities and a copy of the latest prospectus just call us on 01872 267122 or email heenquiry@truro-penwith.ac.uk

You can also ring 01872 267122 to book a place at the HE Open Day on Saturday 5 November 2016, 10.00 am until 3.00 pm.

Part-time Courses

Get more from your favourite hobby, or discover a new one with our extensive range of recreational courses. From exploring your creative side with a variety of arts and crafts courses, including life drawing, watercolour painting, dressmaking and flower arranging to discovering the world's cuisine through a selection of cookery programmes, with dance, fitness and music classes in between, there is bound to be something for you.

Looking to boost your skills or change career? We offer plenty of qualification courses to enhance your employability. With courses in administration, accounting and personnel, to law and teaching, as well as hair and beauty programmes, there are lots of opportunities available to improve your prospects, whether you are just starting out or aiming higher up the career ladder.

If you would like to find out further information or enrol, please contact our friendly Part-time Courses team on 01872 265800 / 01736 335149 or email ptinfo@truro-penwith.ac.uk

Your next steps: How to Apply



Have a think and do your research
What subjects are your favourites, which do you enjoy the most? What is your dream career and what subjects or courses will help you get there?



Fill out an application form
You'll find application forms for download on the College website, or ask for one at the College. If you need any help completing your form just get in touch with our helpful team. You can also complete a 16+ Option Form at your current school.



Come along to an Information Event
Our events are a great way to meet and speak to our staff and find out more about the exciting opportunities available at Callywith College. See the opposite page for dates and times.



Attend a short interview
Once you've applied we'll invite you in for a short interview to talk through your course choices and options. When everyone's happy you will get your course offer and entry requirements.



Get your GCSE results
Whatever your results we know you'll have done your very best. We will send you a letter explaining how to tell us your results.

That's it

All that's left is to come along to your induction at the College in September. We look forward to seeing you then.



Get in touch
Call us to confirm your place or if you're not sure of your next move we can help. Talk to our friendly advisers who are here to help you work out the best path to that dream career.



Come & See us

Between October 2016 and May 2017 the Application Suite at Callywith College, Bodmin is open two Saturdays each month from 10am - 2pm. Pop in and talk to an advisor about the College and its courses. No appointment necessary. We're Open:



Saturday 1 & 15 October 2016
Saturday 5 & 19 November 2016
Saturday 3 & 17 December 2016
Saturday 7 & 21 January 2017

Saturday 4 & 18 February 2017
Saturday 4 & 18 March 2017
Saturday 8 & 22 April 2017
Saturday 6 & 20 May 2017

You can also book an appointment to talk to an advisor any Tuesday or Thursday between October 2016 and May 2017 from 4.30pm - 8pm. Please get in touch to arrange a suitable date and time.

Callywith College will hold further open and information events throughout the year at a location near you. Get in touch to find out more or check local press, 'Like' us on Facebook and 'Follow' us on Twitter to keep up-to-date.

Open Event
Saturday
19 August 2017

*Come and be the first to look around.
Take a campus tour, see the
facilities, meet tutors and
experience first-hand the new
Callywith College.*

Index

A

Academies	12 & 42
Access	46
Access to Higher Education	54
Attendance Advice	47

C

Callywith College Bursary Fund	47
Campus & Facilities	8 & 46
Careers Guidance	47
Choose us	4
College Day	49
College Policies & Procedures	49
College Shop	46
Contents	3

D

Data Protection Act	49
Drugs, Alcohol & Smoking Policy	49

E

Equality of Opportunity	48
Equality & Safeguarding	48
Examination Fees	49

F

Fees	49
Fees Waiver	49
Foundation Art & Design	54
Frequently asked questions	50

G

GCSEs & Functional Skills	47
---------------------------	----

H

Higher Education	55
How to Apply	56

I

Information Events	57
Information Technology	46
International Students	47

L

Learning Centres (Libraries & IT Suites)	46
Learning Difficulties & Disabilities	48
Learning Support	47
Lifelong Learning	54

M

Mental Health, Welfare & Counselling Support	47
--	----

P

Part-time Courses	55
-------------------	----

R

Refreshments	46
--------------	----

S

Safeguarding Children, Young People & Vulnerable Adults	48
Student Life	10 & 49
Student Services	47
Student Support	47
Support Services	47

T

The Callywith College Charter	49
The College Campus	46
The Low-down	46
Truro & Penwith College Business	55
Tutor Support	47

W

Welcome	2
---------	---

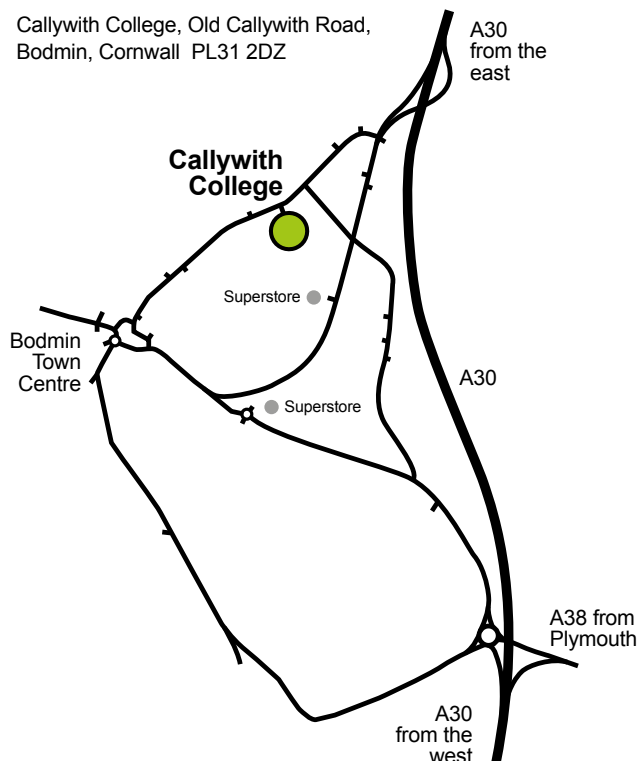
Y

Your Journey to College	52
Your Options Explained	14



How to get to Callywith College

Callywith College, Old Callywith Road,
Bodmin, Cornwall PL31 2DZ



Information Events

Our events are a great way to meet and speak to our staff and find out more about the exciting opportunities available at Callywith College. Discover more on page 57.

Get in touch



Call us on
01208 224000



Find us on Facebook
www.facebook.com/callywithcollege



Follow us on Twitter
[@callywith](https://twitter.com/callywith)



Visit us online
www.callywith.ac.uk



Email us on
enquiry@callywith.ac.uk

Correct at time of print. Prospective students should check with the College for up-to-date information. This document is a guide for the information of students and parents. It is not intended to create any contractual relationship. Courses and other details may be modified if necessary. Programmes of study leading to a qualification are subject to the approval and regulations of awarding bodies. Many thanks to all our Truro and Penwith College students, past and present, who appear in this prospectus.

If you require this document in any other format please contact Callywith College on 01208 224000.

In association with
Truro & Penwith College



THE ROYAL SOCIETY
Associate Schools and Colleges

