

**YOUR FUTURE
STARTS HERE**



**2026
CALLYWITH
COLLEGE**



A LEVELS | DIPLOMAS | T LEVELS | ACADEMIES

CONTENTS

04

WHY CHOOSE US?

Discover our fantastic Ofsted Outstanding college. With state-of-the-art facilities and resources, a diverse range of courses and enrichment activities, exceptional teaching and student support and a track record of student achievement, Callywith College is your stepping-stone to a bright future.

30

COURSES

All of our courses are listed by type. Once you've narrowed down your options here, be sure to find out more course details on our website or at one of our Open Events (see inside back page for dates).

32

WHAT TO CHOOSE & ENTRY REQUIREMENTS

Discover all your options and view course entry requirements. With the widest choice of A Levels and vocational courses in North and East Cornwall, there's bound to be something perfect for you.

76

ACADEMIES

More of the things you love. Choose academic or sporting options as an additional pathway alongside your full-time studies.

84

THE LOW DOWN

Everything else you need to know including how to get to the college, how to apply and our Open Event dates.

A LEVEL COURSES 34

ART & DESIGN: FINE ART	35
ART & DESIGN: ILLUSTRATION/GRAPHICS	35
ART & DESIGN: TEXTILES	37
ART HISTORY: CRITICAL & CONTEXTUAL STUDIES	37
BIOLOGY	38
BUSINESS STUDIES	38
CHEMISTRY	40
CLASSICAL CIVILISATION	41
COMPUTER SCIENCE	41
CRIMINOLOGY A LEVEL EQUIVALENT*	42
DRAMA & THEATRE STUDIES	42
EARLY CHILDHOOD DEVELOPMENT A LEVEL EQUIVALENT*	43
ECONOMICS	43
ENGLISH LANGUAGE	45
ENGLISH LANGUAGE & LITERATURE	45
ENGLISH LITERATURE	46
ENVIRONMENTAL SCIENCE	47
EXTENDED PROJECT QUALIFICATION - EPQ 1/2 A LEVEL EQUIVALENT*	47
FILM STUDIES	48
FRENCH	48
GEOGRAPHY	50
GEOLOGY	51
GERMAN	51
HEALTH & SOCIAL CARE A LEVEL EQUIVALENT*	52
HISTORY	52
LAW	53
MATHEMATICS	54
MATHEMATICS - FURTHER	54
MATHEMATICAL STUDIES - CORE MATHS 1/2 A LEVEL EQUIVALENT	57
MEDIA STUDIES	57
MEDICAL SCIENCE A LEVEL EQUIVALENT*	58
PHILOSOPHY OF RELIGION & ETHICS	58
PHOTOGRAPHY	59
PHYSICS	59
POLITICS	61
PSYCHOLOGY	61
SOCIOLOGY	62
SPANISH	63
SPORT & EXERCISE SCIENCE A LEVEL EQUIVALENT*	63

* These A Level equivalent courses are designed to be part of a typical two-year study programme, alongside other A Levels.

DIPLOMA & T LEVEL COURSES 64

LEVEL 2 WITH MATHS & ENGLISH L2	65
APPLIED SCIENCE L3 EXT DIP	65
ART & DESIGN L3 EXT DIP	66
ART & DESIGN - PHOTOGRAPHY L3 EXT DIP	66
BUSINESS L3 EXT DIP	66
CREATIVE MEDIA PRODUCTION & TECHNOLOGY L3 EXT DIP	68
EDUCATION & EARLY YEARS T LEVEL	68
GAMES ART, ANIMATION & DEVELOPMENT L3 EXT DIP	69
HEALTH & SOCIAL CARE L3 EXT DIP	71
INFORMATION TECHNOLOGY L3 EXT DIP	71
PERFORMING & PRODUCTION ARTS L3 EXT DIP	72
SPORT L3 EXT DIP	72
TRAVEL & TOURISM L3 EXT DIP	75
UNIFORMED PROTECTIVE SERVICES L3 EXT DIP	75



WELCOME



I am delighted that you are interested in studying at Callywith College. By choosing Callywith, you will be joining one of the best colleges in the country. A college that puts students first in everything we do. A college that marries academic success with personal development centred on our college values of Compassion, Resilience, Respect and Success.

Our students achieve excellent results, participate in everything the college has to offer including a broad range of trips, visits, academies and enrichment activities; inspiring them to progress onto exciting destinations at top universities or apprenticeships and employment with excellent employers.

Callywith College provides a state-of-the-art learning environment for specialist 16-19 education, where students thrive on a broad choice of academic and classroom based vocational courses enriched by meaningful extra-curricular experiences.

Our high-quality provision was recognised as Outstanding by Ofsted in January 2020 and again in March 2024. Inspectors in 2024 said: "Students' work is frequently of an exceptionally high standard. This is because of the high-quality teaching they receive from the highly qualified, expert lecturers who teach them". And "College staff are very ambitious and have high expectations of their students. They have provided exceptional resources to assist in delivering high-quality education".

If you join our college, you will receive the highest quality teaching and learning in a supportive and caring environment, that will both nurture and challenge you to achieve your ambitions and aspirations.

I look forward to meeting you soon at an open event as you make the decision to join Callywith College and take the next step into your future.

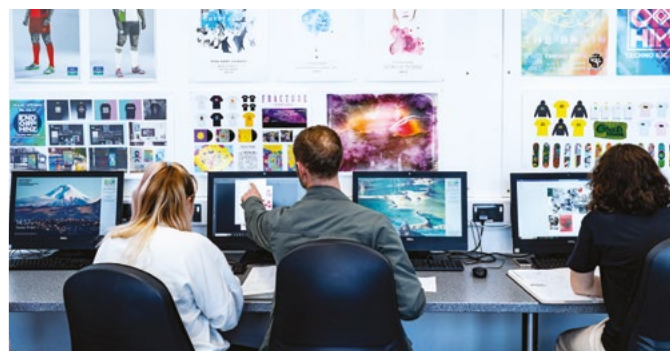
Dr Jon Grey
Principal
Callywith College

YOUR FUTURE STARTS HERE





CHECK OUT
CALLYWITH
COLLEGE
LIFE ON
INSTAGRAM



WHY CHOOSE US?

MORE OF WHAT YOU LOVE

At Callywith College, we're big believers in choice. **YOUR** choice.

Studying here means you get to choose from an exciting range of subjects. Whether you are academic or prefer to learn by doing, it's easy to find the course that matches your interests, university goals or career aspirations. Our students tell us they have the time of their lives and make best friends here. You'll see why, surrounded by those who have made similar choices and opening doors to new opportunities you never knew you had. It's why we love our students having a choice.

This is **YOUR** time, and choosing Callywith College could be one of the best choices you ever make.

KEEP UP-TO-DATE
WITH ALL THE LATEST
NEWS AND EVENTS
ON SOCIAL.



@callywithcollege/@callywith



WHATEVER YOUR PASSION, PURSUE YOUR DREAMS
AT CALLYWITH COLLEGE.



“

I LOVE HAVING
THE FREEDOM TO
TAKE CONTROL
OF MY OWN
FUTURE AND THE
OPPORTUNITIES
YOU GET.

DISCOVER MORE



DISCOVER MORE. VISIT [CALLYWITH.AC.UK](http://callywith.ac.uk) FOR MORE COURSE INFORMATION & APPLY ONLINE

Once you've had a taste of what's on offer at Callywith College, head on over to our website and discover more. You'll find detailed course information, student testimonials, interactive virtual campus tours, 360 aerial views and lots of useful information to help you decide on the best course for you and make the most of your college experience.

Of course, once you've done your research, our open events are the next step. There are many opportunities each year to join us where you can explore the campus, meet the staff and find out about your future at one of the best college's in the country. See the back page or our website callywith.ac.uk/open-events for open event dates.



Take the tour online:
callywith.ac.uk/360callywith

360° INTERACTIVE CAMPUS TOURS & AERIAL VIEWS

Get hands on with amazing, fully interactive campus tours. Take control to zoom around buildings, click information points to find out more and explore the fantastic spaces, resources and facilities on offer.

You can also soar above our campus for a real birds eye view. See the scale of the whole site, the impressive state-of-the-art facilities made just for you and the fantastic location in the beautiful Cornish landscape. Discover a world of opportunity.



OUTSTANDING EDUCATION

YOUR EDUCATION AND YOUR FUTURE COULDN'T BE IN BETTER HANDS WHEN YOU CHOOSE TO STUDY WITH **OFSTED OUTSTANDING** CALLYWITH COLLEGE.

We are officially recognised as one of the best colleges in the country and Callywith College was awarded a Grade 1, 'Outstanding Provider' in every category by Ofsted in 2020. When inspectors returned for our inspection in March 2024, they re-confirmed their judgement.

This makes us one of the highest quality colleges nationally for the standard of our teaching, student support, facilities and student experience.

Not only are we one of the best performing state A Level providers in Cornwall, we are also one of the highest performing colleges nationally across a range of benchmarks.

The thriving, supportive community and positive, encouraging environment, combined with world-class facilities and exceptional staff, provides you with the best opportunity to achieve your educational goals.

“

STUDENTS' WORK IS FREQUENTLY OF AN **EXCEPTIONALLY HIGH STANDARD.**

Ofsted 2024

COMMENTS FROM OFSTED INSPECTORS INCLUDE:

“Students' work is frequently of an exceptionally high standard. Their course and practical work reflects this, as does their theory and examination preparation. This is because of the high-quality teaching they receive from the highly qualified, expert lecturers who teach them.”

“Students are extremely well supported by the lecturers and other college staff. They undertake an excellent tutorial programme, which is well planned and flexible enough to adapt quickly to a changing world.”

“College staff are very ambitious and have high expectations of their students. They have provided exceptional resources to assist in delivering high-quality education.”

“All students are exceptionally well motivated, demonstrate very positive behaviours and work well independently. As a result, outcomes are high.”

“Leaders and managers have created an inclusive environment, where the small number of high needs students flourish.”

“Those with additional needs are very well supported in a holistic manner, with lecturers having extensive knowledge of how to support them individually.”

“Lecturers plan exciting sessions and maximise the opportunities for learners to recall prior knowledge... as a result, all students have a confident understanding of a wide range of curriculum content over time, building well on their prior knowledge.”

“Managers ensure that staff receive highly effective professional development in, for example, effective questioning and classroom management. As a result, staff are very well trained on how best to teach their students and subjects.”

“Leaders and managers ensure that all students receive high-quality information on what they can do next. This includes individualised careers advice and guidance, and meaningful work experience or interactions with the world of work.”

“Leaders, managers and trustees know the college strengths well and understand the areas they need to improve.”

MEET OTHER STUDENTS
DEVELOP NEW SKILLS
IMPROVE PHYSICAL HEALTH
& MENTAL WELLBEING
BUILD CONFIDENCE & RESILIENCE
PREPARE FOR YOUR NEXT STEPS

ENRICHMENT FOR ALL

WHETHER YOUR INTEREST IS
ACADEMIC, SPORTING, CREATIVE,
OR SOCIAL, ENRICHMENT ADDS
TO OUR FANTASTIC STUDENT
EXPERIENCE!

OUR ENRICHMENT PROGRAMME IS DIVIDED INTO FOUR GROUPS:

01

SPECIALIST ACADEMIES

Improve your chances of securing that place at a selective university and enhance your employability. Encompassing Academic, Medics', Digital and Law academies. Find out more about our academies on page 76.



02

COMPETITIVE SPORT ACADEMIES

Competitive sport for those students who want to train, improve their skills, knowledge and fitness. Includes High Performance, Football, Hockey, Netball, Rugby, Esports and Basketball academies. Find out more about our academies on page 76.



EXTRA CURRICULAR ENRICHMENT

Developing additional skills beyond an academic programme. Includes the Extended Project Qualification (EPQ), Networking Lunches, DofE, Ten Tors, Student Executive Programme, Creative Writing, Lingua Lounge, Sustainability, Music and Pride groups. Find out more in The Low Down section on page 84.

03

04

PHYSICAL HEALTH & MENTAL WELLBEING

Non-competitive, fun and social activities. Includes our Callywith Active Programme - gym sessions, badminton, table tennis, yoga, boxing fitness, Mindfulness Trail walks and outdoor exercise equipment, and Dungeons & Dragons, and Chill & Chat social groups. Find out more in The Low Down section on page 84.

“

The enrichment activities provide a great opportunity to get out of the classroom and develop new skills that you can't get elsewhere. I have had the chance to meet many new people, make lasting friendships and most importantly, have a laugh!

”

OUR VALUES

Chosen by staff and students, our values of Compassion, Resilience, Respect and Success define Callywith College, where we put students first in everything we do, combining academic achievement with personal development.



RESILIENCE



MISSION

Our mission is to provide the best learning experience with exceptional teaching and student support leading to the highest level of achievement by our students.

COMPASSION



SUCCESS



RESPECT



ETHOS

Callywith College has established and maintained an ethos that fosters academic success whilst providing balanced, well-rounded support and pastoral care conducive to significant personal development and onward progression for our students. This ethos and culture have been built by focusing on three key pillars of Curriculum, Pastoral Support and Personal Development.

PERSONAL DEVELOPMENT



WHAT IS PERSONAL DEVELOPMENT?

At Callywith College, we recognise the importance of not only supporting you to achieve your qualifications, but also nurturing your personal growth, helping you to become the best version of yourself.

Your weekly Personal Development session will cover a range of topics to support you in becoming a well-rounded and resilient young adult. The sessions are a safe space in your week where you can learn about, discuss, and explore essential topics as you transition into adulthood and become more independent.

PERSONAL DEVELOPMENT CAN HELP YOU TO:

- Build a toolbox full of skills and knowledge that will help you to navigate through life's ups and downs.
- Think critically about the world around you by accessing unbiased, factual, and reliable information from a range of perspectives.
- Empower you to make informed decisions, handle challenges, and feel more confident and fulfilled.
- Set you up for success in college, relationships and the future.
- Develop your communication, teamwork, problem solving, resilience and empathy skills - vital transferable skills for workplace success.
- Understand your emotions, build strong relationships, take care of your health, manage your money and set and achieve goals.



THE PERSONAL DEVELOPMENT SESSIONS COVER A RANGE OF TOPICS, FROM LIGHT-HEARTED ACTIVITIES TO LIFE SKILLS AND STAYING SAFE IN ALL AREAS OF LIFE.

TOPICS COVERED:

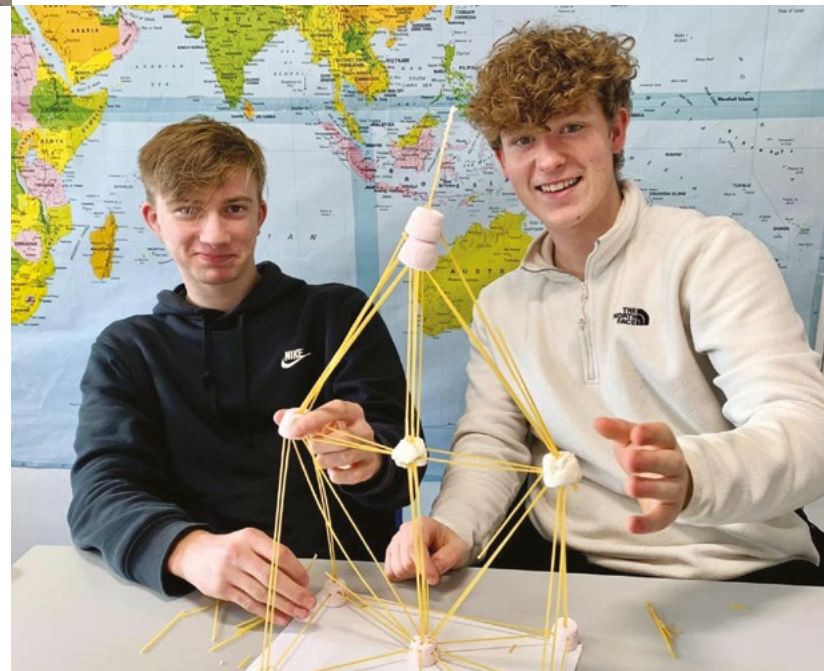
The Personal Development curriculum aims to prepare you for adult life by providing you with a variety of opportunities for learning about the world around you, developing your critical thinking skills, and engaging in self-reflection. The content is shaped by student feedback and needs, current affairs and the local context, as well as national guidance.

Topics include preparing for life after college, developing independence and life skills, managing health and wellbeing, understanding relationships and consent, building resilience and critical thinking, exploring careers and next steps, and learning how to stay safe and respectful both online and offline.

STUDENT FEEDBACK:

"The sessions have helped me gain some really important life skills and knowledge. I received plenty of support and guidance when making my UCAS choices and writing my personal statement. This led to me receiving all my sought-after offers really quickly."

"All the PDTs really dedicate a lot of time and effort into the weekly sessions. The PDTs are always there in whatever way you reach out to them to offer support and guidance. When tough times occurred, whether it affected just me or the wider community, they always guide you through the whole way and are really supportive."



THE ROLE OF THE PERSONAL DEVELOPMENT TUTOR:

All students are allocated a Personal Development Tutor (PDT). Their role is to have oversight of the student journey. Your PDT will meet with you every week and deliver the personal development curriculum, as well as ensuring you stay on track by monitoring your wellbeing, attendance and progress.



JESS DEAN
PERSONAL DEVELOPMENT TUTOR

What support do you offer?

As your Personal Development Tutor, I'm here to be your constant support throughout your time at college. That means being someone you can come to if you're struggling with anything from attendance and motivation to personal challenges or just feeling overwhelmed. I'll always listen, work with you to find solutions, and help connect you with the right support, whether that's in college or from external services. I'm also here to be your cheerleader: to encourage you when things are going well, and to help you get back on track when they're not.

How will it help me?

The Personal Development sessions are designed to help you grow in confidence and feel more prepared for life after college. The sessions will also support you in planning your next steps.

OUTSTANDING OPPORTUNITIES

OUR STUDENTS ARE HAVING THE MOST INCREDIBLE EXPERIENCES.

A world of opportunity - Discover where in the world you could go with Callywith College: Students at the college have been on a wide range of trips to Iceland, Spain, France, Canada, London, Poland, Iceland, Eswatini, Honduras, Italy and Germany through trips in their subject area.



SPANISH TRIP GRANADA

Students who study Spanish visit the beautiful and historic city of Granada, soaking up the Andalusian culture and putting their spoken Spanish skills into practice. Students enjoy a range of cultural activities including a flamenco show in the caves of Sacromonte, visits to the Arabic quarter and a guided tour of the Alhambra.



GEOGRAPHY TRIP ESWATINI

Students learned about African culture as well as helping the college's Shewula Orphans' Fund charity and visiting local schools. Students could see what an impact education can have on life chances for children in the developing world.



HOLOCAUST PROJECT POLAND

A Level History students went on a harrowing trip to Krakow, Poland to visit Auschwitz 1 and Auschwitz Birkenau. The trip was part of Holocaust Educational Trust's 'Lessons from Auschwitz' project which is an opportunity for students to learn more about the Holocaust and share what they have learnt and experienced with the college and wider community through a 'Next Steps' project.

GEOGRAPHY TRIP ICELAND

Students got a taste of adventure in Iceland. This remote sub-arctic nation afforded students diverse experiences including exploring the snowy foot of the notorious Eyjafjallajökull volcano, glacier ice hiking and an off-road excursion into Þórsmörk.



RUGBY ACADEMY TRIP ROSSLYN PARK, LONDON

Male and Female Rugby Academy students took a trip to the Rosslyn Park National Schools Sevens tournament in London - the largest schools tournament in the world for different age groups and genders.



SKI TRIP ITALY

Students hit the slopes, polishing up their ski skills with the help of local instructors in the beautiful mountains of Ponte Di Legno, Italy, with some students learning for the very first time!

MEET THE TEAM

OUR **HIGHLY EXPERIENCED TEAM** IS COMMITTED TO ENSURING STUDENTS RECEIVE THE **HIGHEST POSSIBLE LEVELS OF TEACHING EXCELLENCE**, COMBINED WITH **UNRIVALLED STUDENT SUPPORT**.

Teaching & Support Staff

Our teaching and support staff are committed to ensuring students have an outstanding learning experience in a caring and supportive atmosphere.

The Callywith teaching team are of the highest quality having a wealth of post-16 experience together with a range of support staff including our Personal Development Tutors and Student Services, Academic Services, Learning Support and Destinations/Careers teams who ensure the college provides the highest level of pastoral care.

Senior Management Team

Callywith Principal Dr Jon Grey leads a dedicated senior management team consisting of Assistant Principals Allyn Jefferies and Jen Temple and Business Manager Rae Loom, along with 10 Programme Team Leaders (PTLs) - in delivering teaching and learning and student support services at Callywith College.

Callywith Principal Dr Jon Grey is responsible for ensuring that the subject specialists delivering the college's courses are given the best possible environment to help students achieve outstanding results.

Jon and the Callywith Senior Management Team played a key role in Callywith College achieving Ofsted Outstanding status' in January 2020 and March 2024.

Assistant Principals Allyn Jefferies and Jen Temple play vital roles in ensuring our students have an outstanding experience. Allyn leads on teaching and learning, ensuring that all students receive the highest quality of teaching; helping them to achieve outstanding results. Jen leads on the Callywith College student experience, ensuring students receive the best possible support.

TALK TO OUR TEAM AT ONE OF OUR OPEN EVENTS.

[See the inside back page for dates.](#)



SUPPORTING YOU

WHATEVER YOU CHOOSE TO STUDY, WE'RE HERE TO SUPPORT YOU THROUGHOUT YOUR TIME AT CALLYWITH COLLEGE.



JULIAN WILLIS
CALLYWITH ACTIVE LEAD

What support do you offer?

We deliver a number of programmes for students that offer free physical activity opportunities every day.

How will it help me?

Callywith Active offers non competitive, relaxed and friendly physical activity opportunities including gym sessions, fitness classes and sports sessions to help promote good physical health and mental wellbeing.

How do I find out more?

You can find out more by emailing callywithactive@callywith.ac.uk



LUCY CLACK
ACADEMIC SERVICES SUPPORT

What support do you offer?

The Academic Services Team offer support with a variety of academic study skills including essay structure, organisation and time management, revision and exam prep, research, note taking, referencing and managing mental health in academia.

How will it help me?

We are here to ensure your transition from GCSE into post-16 education is as smooth as possible, and that you feel supported and confident in your studies.

How do I find out more?

Stop by either of the Learning Centres, or simply ask your Personal Development Tutor to refer you. Alternatively, contact academicservices@callywith.ac.uk for more information or to make an appointment.



DAVID SELLARS
DESTINATIONS LEAD TEACHER

What support do you offer?

Our Destinations Team are here to guide you through those all-important choices about what to do next and help you make sense of your future options.

How will it help me?

If you are uncertain about your career plan, our careers team can help you with choosing between different options. If you already have a progression route in mind, we can also advise you on how to get there.

How do I find out more?

You can visit our Destinations Space in Temple T303 or callywith.ac.uk/careers for more information and links to helpful resources for students and their parents/carers or email careers@callywith.ac.uk



JAMIE CROWLE
STUDENT SERVICES TEAM LEADER

What support do you offer?

Our Student Services team are here to support you with any issues you may be experiencing outside of your academic studies. You can talk to us confidentially about anything that is troubling you and access a variety of information, advice, guidance and personal support.

We have a dedicated team of staff who are trained, trauma-informed practitioners and can help you with issues such as mental health, bereavement, sexual health, money, housing, identity, young carers, drugs & alcohol, personal safety, relationships and more. Our support offer is diverse and includes a mixture of confidential one-to-one support, peer support groups, a chaplaincy, and drop-in clinics with a wide range of specialist agencies. We even have our very own therapy dog, Macy!

How will it help me?

We are a trauma-informed and mentally healthy college. This means we recognise the links between academic achievement, personal development and wellbeing, and how barriers out of our control can impact on these things. We also understand that coming to college isn't just about getting qualifications – it's also about supporting and empowering you to become a well-rounded and resilient young adult. We do this by taking a holistic approach, which means we aim to support you in all aspects of your life.

How do I find out more?

Pop in to speak to us at any time in the Temple building, room T010 or email studentservices@callywith.ac.uk or call 01208 224460.



JOHN RATCLIFFE
SPECIAL EDUCATIONAL NEEDS AND DISABILITIES COORDINATOR

What support do you offer?

We can offer one-to-one support for identified high needs students, small group support, learning needs assessment on referral from lecturing staff and liaison with outside agencies. It is my role to ensure that appropriate provision is put in place for young people with Education, Health and Care Plans (EHCPs) and that information is shared with lecturing staff so that they are able to cater for their requirements.

How will it help me?

It will help you to effectively access your learning and enable you to achieve your very best.

How do I find out more?

Call me on 01208 224127 or email johnratcliffe@callywith.ac.uk

GET RESULTS GO PLACES

WE KNOW YOU WILL HAVE **THE TIME OF YOUR LIFE AT CALLYWITH COLLEGE**, AND YOUR RESULTS ARE A BIG PART OF IT.

Callywith remains one of the top non-selective colleges in the country, where students consistently achieve outstanding results compared to local and national averages.

In Summer 2025, our full-time A Level student cohort of around 400 students received results that collectively secured a 98% pass rate, with more than three quarters of entries being awarded A*-C grades. Students studying Level 3 Extended Diploma and Diploma courses (equivalent to three A Levels) achieved equally excellent results, with 90% of the college's cohort of approximately 250 passing with Merit grades or higher.



ALEX PETERS-TRAIN - DISTINCTION

Previous School: Budehaven Community School

UAL Level 3 Art & Design Extended Diploma student Alex is going on to study Graphic Design at University of Edinburgh.

"My experience at Callywith was great, I'd recommend it to anyone. It's different to secondary and is like an extra step between uni and school. I like the mature atmosphere here and it's an overall cool place!"

"Staff have helped me grow and directed me down the path I wanted to follow, by being involved with my work, without using force."



ALICE RILEY - A*A*A*B

Previous School: Wadebridge School

Extra Activities: Extended Project Qualification (EPQ)

Alice studied A Levels in History, Geography and Environmental Science and the EPQ and is going on to study Global Sustainable Development at the University of Warwick.

"I am over the moon with my results, I got into my first-choice uni. The staff at Callywith were amazing and highly attentive. The college gave off a mature and work-like atmosphere where I thrived."



THEO MCKAY - A*A*A*A

Extra Activities: Duke of Edinburgh

Theo studied A Levels in Maths, Further Maths, Computer Science and Psychology and is going on to do a degree apprenticeship in Aerospace Software Engineering with BAE.

"I'm very happy with my results. The staff at Callywith are so hard working and always on hand for any troubles you may have. I'm incredibly thankful and I couldn't have achieved my results without them."



RETS ZAVNERS - A*A*A*

Previous School: Penrice Academy

Extra Activities: Law Academy

A Level Law, Politics and Business Studies student Rets is going on to study Law at University of Nottingham.

"I'm feeling very excited about my results and extremely grateful to Callywith College for the excellent teaching and support, the staff have been extremely helpful during my time here."



CADAN CHENOWETH - D*D*D*

Previous School: Sir James Smith's Community School

Extra Activities: Football Academy

BTEC Level 3 Sport Extended Diploma student Cadan plans to take a gap year before pursuing a career teaching within the sports industry, which he intends to study at Plymouth Marjon University.

"I am very pleased with my results, these will help me a lot in the future to gain jobs in a career sector that I enjoy."

"Callywith, for me, was above other colleges, the facilities are always clean, the staff are very friendly and go the extra mile to help with coursework and exams. Overall, I have really enjoyed everything about Callywith and I am very pleased that I chose to go here."

STUDENT DESTINATIONS

STUDENTS AT CALLYWITH COLLEGE **MAKE EXCELLENT PROGRESS, OFTEN WELL ABOVE PREDICTED OUTCOMES.** IT'S YOUR FIRST STEP TO AN INSPIRING FUTURE.

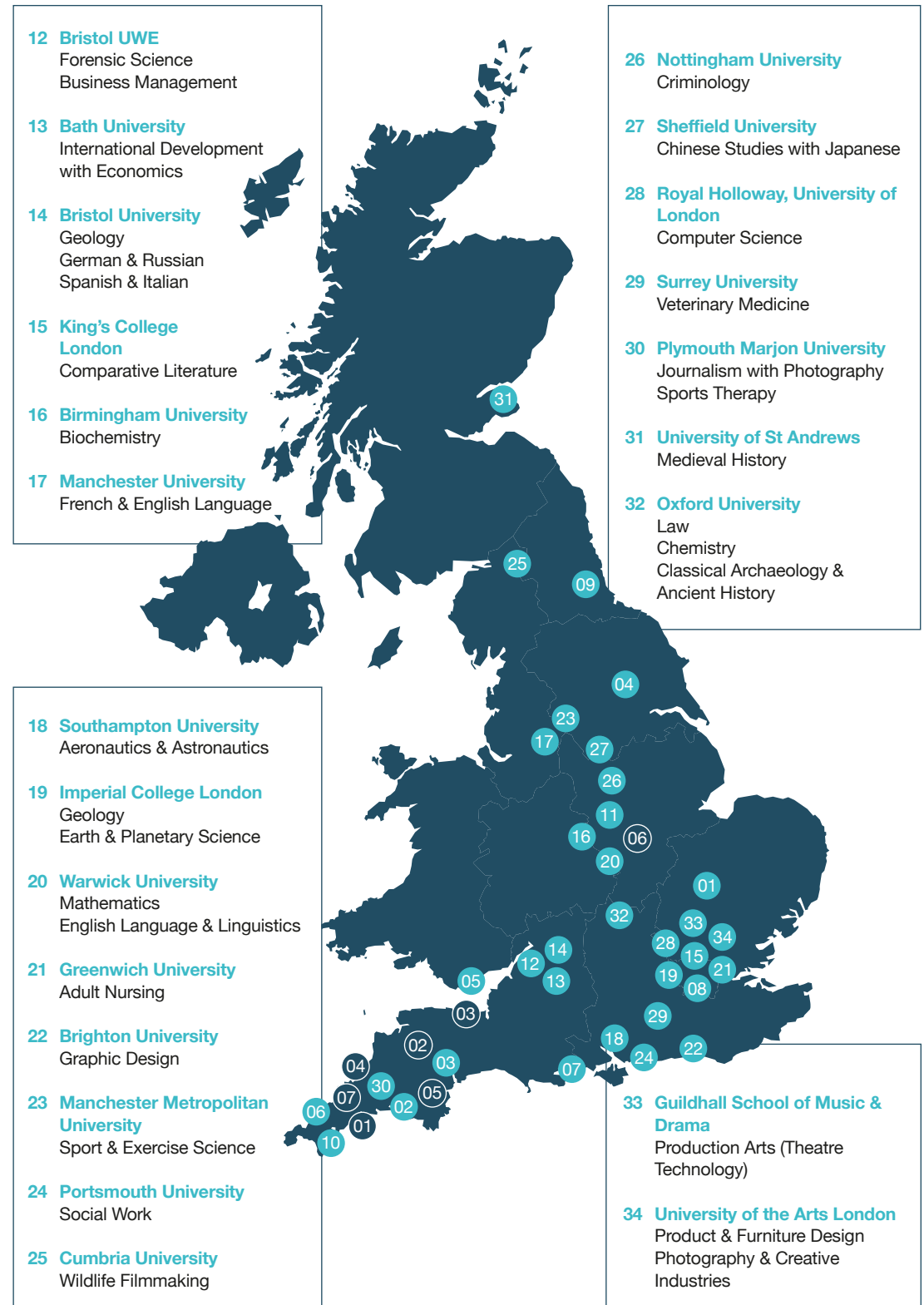
Your studies here are a perfect stepping-stone, preparing you for progression onto an apprenticeship, into employment or like many of our students, to university. Here is a small taster of our student destinations and subject areas:

APPRENTICESHIP DESTINATIONS:

- 01 Cornwall Partnership NHS Foundation Trust**
L6 Adult Nursing
- 02 Seasalt**
L4 Buying & Merchandising
- 03 EDF Hinkley Point**
L4 Project Management
- 04 BAM Construct UK**
L4 Construction Management
- 05 CACI**
L6 Digital & Technology Solutions
- 06 Environment Agency**
L6 Environmental Practitioner
- 07 Bishop Fleming**
L7 Accountancy

UNIVERSITY DESTINATIONS:

- | | |
|--|--|
| 01 Cambridge University
Education & Psychology
Human, Social & Political Science
Natural Science | 06 University Centre Truro & Penwith
Children & Young People's Workforce |
| 02 Plymouth University
Maritime Studies
Midwifery | 07 Bournemouth University
Operating Department Practice |
| 03 Exeter University
Maths & Politics
Zoology
Medicine | 08 London South Bank University
Children's Nursing
Law |
| 10 York University
History
Genetics | 09 Durham University
Ancient History
Physics |
| 05 Cardiff University
Architecture
Civil Engineering
Diagnostic Radiography | 04 Falmouth University
Fine Art
Games Development
Film |
| | 11 Loughborough University
Business Economics & Finance |



OUTSTANDING OUTCOMES

OUR STUDENTS NOT ONLY HAVE **THE MOST INCREDIBLE EXPERIENCES**, BUT ALSO **EXCEL IN THEIR CHOSEN FIELDS.**

With a little ambition and the support from Callywith College, we'll help you get where you want to go, no matter where in the world that may be. Here is just a taster:



Meet our alumni Former students talk about their experiences, what they are up to now and what they plan to do next.

callywith.ac.uk/careers



ARBENNIK WEBSTER
ACTING - MOUNTVIEW ACADEMY OF THEATRE ARTS

Previous school: Bodmin College
Course/s studied: Level 3 Performing & Production Arts Extended Diploma

"My Performing Arts lecturers at Callywith supported me to apply for prestigious drama schools and gave me the skills and confidence to audition effectively.

"I have recently performed in my first professional show, 'The Bakery is Closed Again' at the Barbican Theatre, Plymouth, which is now touring across the country."

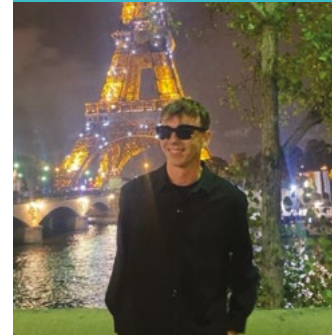


TENEISHA DUGUID
MEDICINE - ASTON UNIVERSITY

Previous school: Fowey River Academy
Course/s studied: A Level Biology, Chemistry, Psychology and AS Physics
Extra activities: Medics' Academy, Student Ambassador

"My time at Callywith really helped to make my decision about where to study. It gave me the advice and resources to be able to pick the universities that were best suited to me.

"Callywith really helped prepare me for the jump from school to university and encouraged me to become an independent learner. I was able find the ways in which I best learn, setting me up for the best possible start at uni."



KYLE HOLLISTER
UNIVERSITY OF LONDON INSTITUTE, PARIS - FRENCH

Previous school: Saltash Community School
Course/s studied: A Level French, English Literature and Media Studies

"When I started university, I didn't feel as though there was much of a jump from A Levels and I think it's because at Callywith we are treated as mature students rather than school kids.

"Callywith is an amazing place to find support for university. In terms of applications and interviews, the staff couldn't have been more helpful in preparing us and guiding us through the process! I'm now studying a masters degree at Coventry University in Automotive Journalism which is a pretty niche degree being the only one of its kind in the world."



GEORGIA STEVENS
LAW - OXFORD UNIVERSITY

Previous school: Holsworthy Community College
Course/s studied: A Level Law, Geography and History
Extra activities: Extended Project Qualification, Holocaust Ambassador

"My time at Callywith was pivotal in applying for Oxford. I attended weekly Oxbridge sessions where the application process was explained and I was guided on how to make my application stand out. I've now accepted a role as a corporate lawyer in London at one of the world's top law firms, following an internship."

OLLI SANDERCOCK
CIVIL ENGINEER / MASTER'S IN CIVIL ENGINEERING - SWANSEA UNIVERSITY

Previous School: Sir James Smith Community School
Course/s studied: A Level Maths, Physics, Geography
Extra activities: Rugby Academy

"Callywith prepared me exceptionally well for university. My lecturers were extremely supportive during the application process and provided lots of guidance and support. I am now starting my career as a Civil Engineer working in the Bridges and Structures division."



AIMEE WALTERS
LEVEL 6 ENVIRONMENTAL PRACTITIONER DEGREE APPRENTICESHIP - ENVIRONMENT AGENCY

Previous School: Penrice Academy
Course/s studied: A Levels in Maths, Geography and Psychology

"I attended an informative tutorial session at Callywith where we discussed other further education opportunities that weren't university. My Geography Lecturer also held a session where degree apprentice students at Arup did a Teams online call with us and talked about their experience as apprentices, why they think it's a good route, and answered any questions we had.

"The best thing about a degree apprenticeship is the ability to obtain a degree whilst working and earning and gaining experience in my chosen sector. When I graduate, I will already have five years work experience with a huge, influential company in the environmental sector."

COURSES

WHAT TO CHOOSE & ENTRY REQUIREMENTS
A LEVEL COURSES
DIPLOMA & T LEVEL COURSES
ACADEMIES

32
34
64
76

30



WHAT TO CHOOSE & ENTRY REQUIREMENTS

ACADEMIC OR MORE HANDS ON;
THERE'S A ROUTE FOR YOU.

If you want to stay in full-time education, you can choose subjects that interest you, either a variety at A Level or specialising in one area on a vocational course.

All of these options will give you an advantage. Whether you want to find a job or go on to university or an apprenticeship, we'll help you make the choice that's right for you.

For more information about your options, make sure you attend one of our many Open Events.

You will get the opportunity to see our fantastic facilities and find out about your life as a student at our Ofsted Outstanding college. See the inside back page for our open event dates.

32

Choose three A Levels from over 30 subjects. It's a good way of keeping your options open.

A LEVEL LEVEL 3

How long is it? Two years

What do you need? Five GCSEs at Grade 4 or above in appropriate subjects, to include English Language or Literature and/or Maths at Grade 5 or above and with specific relevant subjects related to your A Level choices at Grade 6 and above.

What is it? Advanced Level programmes consist of formal lectures, class activities and assessments, set homework and problem-solving. For each subject, you will also be required to undertake several hours of independent study. Modern study facilities are available in the college and successful students use these effectively.

We strongly encourage a broad programme for A Level students. Most subject specifications are assessed by examination but some include coursework assessment. All A Levels at the college will be delivered in the new linear format with no qualification at the end of year one. Academic assessment for Linear A Levels will take place at the end of two years of study. Students must study a combination of three A Levels or A Level equivalents.

A one-year programme to help you build the skills and qualifications to progress to further study or employment.

LEVEL 2 WITH MATHS & ENGLISH LEVEL 2

How long is it? One year

What do you need? You are required to achieve a minimum of three GCSEs at Grade 3 including English Language (or English Literature) and Maths.

What is it? These courses are focused on progression, either to further study or into employment. You will develop knowledge and understanding by applying your learning and skills in a work-related context.

Our Level 2 offer is the pathway to Level 3 courses including Extended Diplomas and T Levels and in specific instances, to A Levels. Level 2 involves Level 2 English and Maths plus a vocational qualification. This provides the platform for progression to a wide range of courses. Assessment will be through a combination of external examination and coursework.

A full-time vocational course in a single specific subject that is equivalent to three A Levels.

EXTENDED DIPLOMA LEVEL 3

How long is it? Two years - In year one you will complete a Level 3 Foundation Diploma before progressing to gain the full Extended Diploma at the end of Year 2 unless otherwise stated.

What do you need? Four GCSEs at Grade 4 to include either English Language or Literature and/or Maths. A Level 2 Diploma at Merit in an appropriate subject can also be considered (plus English and/or Maths).

What is it? The Extended Diploma is equivalent to three subjects at A Level. It is an excellent route if you have decided on the broad area of employment or higher education you wish to pursue.

The combination of a range of specialist modules with the depth of knowledge acquired enables you to progress successfully into higher education or into employment. You will also be required to undertake several hours of independent study. Assessment is through coursework, external written assessments and evaluation of practical skills.

This qualification combines classroom theory and practical learning with an extended industry placement of 45 days.

T LEVEL LEVEL 3

How long is it? Two years.

What do you need? Four GCSEs at Grade 4 to include either English Language or Literature and Maths. A Level 2 Diploma at Merit in an appropriate subject can also be considered (plus English and Maths).

What is it? T Levels are equivalent to three A Levels. T Levels combine classroom theory, practical learning and a three-month industry placement with an employer to make sure you have real experience of the workplace. T Levels have been developed in collaboration with employers so that the content meets the needs of industry and prepares you for work. They provide the knowledge and experience needed to open the door to highly skilled employment, an Apprenticeship or higher level study.

Around 80% of your time will be spent at college with the remaining 20% being spent at your placement. This differs to an Apprenticeship, which is typically 80% on-the-job and 20% in the classroom. Experience with a real employer in a real workplace will allow you to apply the skills and knowledge you learn in the classroom to the job, giving you a taste of the world of work you can expect once you complete your studies.

WHY CHOOSE A LEVELS AT CALLYWITH COLLEGE?

- 1 Want to study more than one subject area? Choose a variety of courses that you love with A Levels.
- 2 Study your favourite subjects in greater depth than ever before.
- 3 Enthusiastic lecturers dedicated to helping you achieve the very best you can.

A LEVEL COURSES

34



A LEVEL ART & DESIGN: FINE ART

● **Why choose this course?** Do you enjoy drawing? Would you like to improve your skills and knowledge? Would you like the opportunity to see and understand the world in a different way? This course offers you the opportunity to develop creatively, either as a personally enriching interest or as part of your progression towards a career within the creative industries.

● **What will I learn?** You will develop key skills and knowledge fundamental to the world of art and design. During a series of workshops, you will explore a range of two-dimensional materials and approaches, such as tone, mark making, ink, mixed media, colour and painting.

You will explore how a range of modern and historic artists have communicated ideas through their imagery and techniques. Year two builds on your learning. Experimental drawing practical workshops are held throughout, encouraging you to take risks and work in new and different ways.

● **Where will it take me?** A qualification in Fine Art is highly valued by many universities and employers. As a 'Classical' 'creative' subject, it is applicable to almost any progression in art and design and an excellent subject to complement courses such as Architecture, History of Art, Film, Prosthetics and Theatrical Make Up, Art Therapy and Education.

APPLY NOW
FIND OUT HOW ON
PAGE 98.

A LEVEL ART & DESIGN: ILLUSTRATION/ GRAPHICS

● **Why choose this course?** Do you possess a lively, enquiring mind? Do you enjoy developing your ideas through drawing and utilising a range of processes towards a final product? You will learn to develop design solutions, exploring the power of visual communication as an invaluable commercial tool.

● **What will I learn?** You will begin with a range of varied and challenging workshops developing fundamental skills and knowledge integral to the world of illustration and design including a mix of traditional and contemporary processes. You will develop skills in industry-standard software including Adobe Photoshop, Illustrator and InDesign. Other aspects include typography, thumbnail sketches, layout design and mixed media. You will research a range of illustrative and graphic styles, applying this knowledge to develop your individual practice.

● **Where will it take me?** You can progress directly from A Level to an arts degree such as Graphic Design, Visual Communication, Illustration, Games Design and Multi-Media Design. Employment as a graphic designer is the clearest route but this course also offers a way into illustration or, with further study, animation; you could work for the media, an advertising company or design agency.



MEET THE STUDENT Q&A

JEMMA from Delabole studies Fine Art, English Literature and History A Levels and the Extended Project Qualification (EPQ). Jemma also takes part in the Academic Academy, Duke of Edinburgh Gold Award, Book Club, Japanese Online Exchange Programme, is a member of the Student Executive and a Student Ambassador. She previously attended Sir James Smith's School.

● **Why did you choose Callywith College?** I chose Callywith as it is well-kept and has up-to-date facilities, all the staff are friendly and always willing to help.

● **What's Callywith like?** At Callywith, you are treated as young adults, and you are expected to keep up with your courses and complete work outside of scheduled lectures. You have a flexible schedule that you control, giving you time to meet with friends, study, relax, or go off campus.

● **What are you hoping to do in the future?** I am hoping to study Interior Architecture at University.

● **What advice would you give future students?** Study courses that you find interesting as this will help to make your time at college more enjoyable.



A LEVEL ART & DESIGN: TEXTILES

● **Why choose this course?** Do you love the tactile qualities of fabrics and stitch? Do you enjoy drawing and visualising your ideas through a hands-on approach to materials? The textiles course encourages you to explore the breadth of approaches available within contemporary textiles today.

● **What will I learn?** You will develop your skills in stitched, printed and constructed textile processes. You will have the opportunity to design one-off textile art pieces (both two and three dimensional), interior products or wearable accessories. Starting by exploring stitch (both hand and machine) as a drawing medium, you will build a comprehensive textiles vocabulary to help you find your own voice within the subject.

Workshops are structured to familiarise you with different techniques and we will also explore how contemporary and historic textile makers communicate ideas. In addition to designing and making, there is a written element to the second year of the course where your learning will be supported by group presentations and contextual lectures preparing you well for higher education.

● **Where will it take me?** You can progress directly to a wide range of degree courses in preparation for a career in textiles, fashion or interior design.

SEE MORE COURSE
DETAILS ONLINE.



A LEVEL ART HISTORY: CRITICAL & CONTEXTUAL STUDIES

● **Why choose this course?** It is an open and welcoming course for those who appreciate art in which, after an induction into the main ideas, issues and methods of art history, you can explore your own interests and focus on areas that arise as you learn more about the subject. This fascinating subject explores works of art that have been produced through the ages and, through these, what artists have tried to tell us about their worlds and lives.

● **What will I learn?** You will discover through formal lectures how art history reflects comments and interprets social and historical events. Through practical assignments, you will develop innovative opportunities to acquire critical, contextual and curatorial knowledge, understanding and skills in appreciating artefacts, texts and images within particular cultural environments, alongside relevant practical investigations. The option provides for a broad range of intellectual and practical learning experiences through a variety of lively and creative strategies for developing and presenting personal, practical, critical and contextual responses.

● **Where will it take me?** Art History is considered as an academic A Level; the equivalent of other humanities subjects such as History, English Literature, Philosophy etc. Therefore, alongside art courses, it can support university entry into a wide range of degree options.



A LEVEL BIOLOGY

● **Why choose this course?** If you enjoy learning about life and living organisms and want to delve deeper into concepts that you have been introduced to at GCSE, from biochemistry and cell biology to behaviour and ecology, then this course will offer you an exciting and challenging area of study.

● **What will I learn?** Biology encompasses the cellular basis of living things, the transformation of energy that underlies the activities of life, and the genetic basis for inheritance in organisms. You will study the evolutionary relationships between organisms and the diversity of life on earth, to include microorganisms, plants, animals and fungi.

● **Where will it take me?** A Level Biology is a highly respected qualification that is valued for many degree subjects and by employers worldwide. If you aspire to study biology or a biology-related subject at university, it is recommended that you also study A Level Chemistry, as together these broaden your options. Biology opens up a wide range of opportunities for university level study, including, but not limited to, medicine, nursing, dentistry, physiotherapy, veterinary science, zoology, radiography, agriculture and horticulture, marine biology, biochemistry, genetics, dietetics, nutrition, applied biology, botany, forensic science and many other possibilities.

A LEVEL BUSINESS STUDIES

● **Why choose this course?** Plan on joining the world of work and industry? Whether it is setting up your own small business or working for a global multinational, many of the key areas of understanding and useful skills are introduced within this course.

● **What will I learn?** You will reflect upon the commercial world and how it impacts your daily life and future. You will explore how different businesses interact with consumers and competitors and how they make operational and financial decisions. This will help build on your understanding of what it takes to manage a business, the importance of the everyday decisions facing a business and how to consider a business' finances. You will consider the global environment that businesses now operate within and how a business' strategy must consider technological, social, environmental and ethical consequences.

● **Where will it take me?** Many universities highly value the qualification and it is a stepping stone to related topics such as Business Management, Economics, Marketing and Accountancy. The course provides a grounding into initial business concepts that will assist you within the industry, whether running your own business or as an employee.

See page 32 for entry requirements



MEET THE STUDENT Q&A

THALIA from Par studies Biology, Chemistry, and Geography A Levels and the Extended Project Qualification (EPQ). Thalia also attends the Medics' Academy. She previously attended Penrice Academy.

● **What's Callywith like?** All the lecturers display a passion for the subjects they teach which is reflected in the engaging class content and delivery. They seem to have a genuine interest in how the subjects they teach are going to aid your future and always do their best to support you in getting there. This may include answering questions outside of classroom hours, marking self-directed practice exams, encouraging participation in extracurricular events such as the Chemistry and Biology Olympiad competitions that can be utilised to enhance your student portfolio - especially important if you are applying for competitive university courses.

● **What are you hoping to do in the future?** I am planning to study Medicine at Exeter University in September.

● **What advice would you give future students?** Choose courses that you have a genuine interest in. Be proactive in engaging with the extra opportunities Callywith offers. This will really help when it comes to writing your personal statement or CV.

MEET THE TEAM Q&A

PETE MAUNDER
SCIENCE DEPUTY TEAM
LEADER



Pete is the Science Deputy Team Lead (DTL) at Callywith, as well as the course lead for the Applied Science Diploma and Lecturer in Chemistry.

● **What inspired you to pursue a career in education?** After fifteen years working in the chemical industry, with a particular focus on drug discovery, circumstances with the economic climate resulted in a re-evaluation of my career. During my industrial employment, I was increasingly involved in staff recruitment and development, having a key role in training of new staff members. This paved the way to my route into teaching, what better way to share my passion for chemistry with my enjoyment of teaching people?

● **What does your role involve?** My main role is teaching chemistry, both on the applied science diploma and the A Level programme. In addition to this I plan and oversee the management of the Diploma, ensuring that the course is delivered to the deadlines imposed by the awarding bodies. My DTL role is to help run the Science Department alongside the Programme Team Leader. I am never surprised about what the DTL role brings, every day is different, with new challenges introduced by the students as they progress through Callywith.

● **What about working at Callywith College do you enjoy the most?** The best part of Callywith is interacting with the brilliant students we have. We take them from all over North Cornwall and West Devon, they make new friends and bring energy and enthusiasm to their studies. It is an honour to help guide them through their A Level and BTEC studies and then celebrate their success as they depart and go on to university and future amazing careers. To be part of their success and journey is a rare privilege.

● **What one thing about you might surprise people?** I have discovered a new class of antibiotic and my research has contributed to the fortification of bread with folic acid, a micronutrient that helps prevent spina bifida in the foetus.

A LEVEL CHEMISTRY

● Why choose this course?

Throughout the course you will be challenged in the three main disciplines within the subject. Physical chemistry encompasses the behaviour of matter and how we can measure and dispense chemicals accurately, to allow our desired reactions to take place safely and successfully. Inorganic chemistry follows the intricate patterns of Mendelev's masterpiece, the periodic table. You will learn to interpret the subtle rules that allow us to make sense of the known 118 chemical elements and begin to understand how and why they are arranged in their specific order. Finally, you will study organic chemistry, the specific chemistry of carbon and how it ranges from simple compounds found in crude oil, petrol and gas, to extremely complicated molecules of life such as condensation polymers and peptide chains.

● **What will I learn?** You will develop your practical skills through plenty of laboratory-based experiments; you will use your mathematical skills to solve problems in a classroom or workshop environment and you will also be introduced to modern analytical techniques such as mass spectrometry, infra-red spectroscopy and nuclear magnetic resonance spectroscopy to elucidate unique chemical structures. The real-life applications of these skills are numerous.

● **Where will it take me?** If you want to study Medicine, Dentistry, Pharmacy or Veterinary Science then Chemistry is essential. An understanding of chemistry is desirable for the study of many subjects and is valued highly by universities.

See page 32 for entry requirements

A LEVEL CLASSICAL CIVILISATION

● **Why choose this course?** To study Classical Civilisation is to understand the backdrop to the modern Western world: its art; its comedy; its philosophy; its words; its politics, its calendar - even its films and festivities. Combined with the influence of Africa and Asia - the events and artefacts of Ancient Greece and Rome still frame current events and modern Western culture. Many of the philosophical, cultural, political and ethical issues which began there, still resonate and unfold today. Studying Ancient Greece and Rome also has an intrinsic vitality and value: at times shocking, funny, beautiful or terrific - but always fascinating.

● **What will I learn?** You will study both Greek and Roman Epic; Homer's 'Odyssey', the ever popular foundation stone of western literature and Virgil's 'Aeneid', Rome's sequel to the fall of Troy and the subsequent creation of the Roman race. You will study Greek Theatre and also the art of archaic and classical Greece, including vases, sculpture and architecture. You will also look at Greek religion and the nature of the Olympian Gods. This appreciation of the classical world will develop your understanding of world events and understanding of wider culture.

● **Where will it take me?** An A Level qualification in Classical Civilisation is a popular and highly regarded qualification by both Higher Education establishments and employers. Students of Classical Civilisation gain access to a wide variety of careers including business, law, marketing, media, art and politics; as well as career pathways specifically involving historical skills, e.g. archaeologist, archivist, author, researcher, curator and academic.



A LEVEL COMPUTER SCIENCE

● Why choose this course?

If you enjoy learning about the fundamental principles and concepts behind computer science and how software is engineered, then this course will stretch and challenge you. You will gain skills in a range of programming environments, how we use programming languages to solve problems, how digital technology is used, and the moral, ethical, legal and cultural opportunities and risks.

● **What will I learn?** You will develop practical skills in a range of programming languages, principally C#. You will use your programming skills to create a game of your choice using the Unity development platform.

You will learn how software interacts with hardware, data structures and processes and how the principles of hardware impact on software and data communication. You will also discover how software drives the digital economy and the implications of the digital revolution on society.

● Where will it take me?

Computer Science complements many courses, such as Physics, Electronics, Mathematics, Technology-related courses, and other sciences and could lead to a degree in Computer Science or Computing-related subjects or a future in programming, networking, business, engineering or banking.

APPLIED DIPLOMA CRIMINOLOGY A LEVEL EQUIVALENT

● **Why choose this course?** This course and the qualification you will achieve is equivalent to one A Level and it has been designed to be part of a typical two-year study programme, alongside A Levels. An understanding of criminology is relevant to many job roles within the criminal justice sector, social and probation work and sociology and psychology.

● **What will I learn?** This course gives learners the opportunity to study different types of crime, the criminal justice system and criminological theories. Learning will be related to authentic case studies. The content of this course allows learners to concentrate on the development of their knowledge and understanding of Criminology. There are four units on this course including Changing Awareness of Crime, Criminological Theories, Crime Scene to Courtroom and Crime and Punishment.

● **Where will it take me?** Successful completion of the course could allow entry into higher education, including Criminology, Criminology and Sociology, Law with Criminology and Psychology and Sociology. Alternatively, the qualification allows learners to gain the required understanding and skills to be able to consider employment within some aspects of the criminal justice system, e.g. the National Probation Service, the Courts and Tribunals Service or the National Offender Management Service.



A LEVEL DRAMA & THEATRE STUDIES

● **Why choose this course?** If you enjoy learning about all aspects of drama and theatre then this course is for you. It is largely a practical course but we always consider the work of the influential playwrights, directors and theatre companies that make theatre so exciting and diverse.

● **What will I learn?** The course will provide you with the necessary skills to analyse and appreciate any play text or performance, recognising how historical and cultural contexts inform all areas of theatre-making while developing your performance skills.

We have an excellent learning environment; our classes take place in a drama rehearsal room or a theatre space. This dedicated space encourages you to develop your understanding of professional working theatre.

● **Where will it take me?** The research, analytical and reflective writing, presentation and communication skills developed on this course are transferable to all areas of further study such as a degree in Drama or English, Media, Education and Humanities based subjects or a vocational route such as drama school to study Acting, Musical Theatre or Design. Drama also complements many courses, such as English Literature, Dance, Classics, any Media-related course and Education.

See page 32 for entry requirements



AAQ EXTENDED CERTIFICATE EARLY CHILDHOOD DEVELOPMENT A LEVEL EQUIVALENT

● **Why choose this course?** The Level 3 Alternative Academic Qualification (AAQ) Early Childhood Development (Extended Certificate) is equivalent to one A Level. It is suitable for students looking to develop their applied knowledge and skills in Education and Early Years as part of a study programme alongside other A Levels. The course provides a solid foundation for careers in education and early years. It is designed for those interested in child development and going into education or early years-related careers, such as primary teaching, or related industries such as speech and language therapy, among many others. There will also be a vocational placement carried out in an early years setting.

● **What will I learn?** You will study four units over two years, this includes two externally assessed units and two internally assessed units. The qualification has four mandatory units covering Children's Development, Keeping Children Safe, Play and Learning, and Research and Reflective Practice.

● **Where will it take me?** You will develop a wide range of skills and knowledge that will enable you to progress to Higher Education, into early years settings and education facilities, or pursue courses in children's nursing and social work. The course also carries UCAS points towards studying a whole range of different degrees at university which are not necessarily directly linked to education or early years.

A LEVEL ECONOMICS

● **Why choose this course?** Economics relates to every aspect of our lives, from the decisions we make as individuals to the policies of firms and governments. The study of economics enables you to develop a deeper understanding of the world around us that is as valuable as it is interesting.

● **What will I learn?** Economics has been defined as the study of the allocation of scarce resources between competing claims and needs. You will explore the nature of markets and their role in allocating resources in a modern economy. You will use the concepts of supply and demand to analyse markets. You will also investigate the central role of the government when markets fail and examine the performance of the UK economy. You will focus on an understanding and analysis of the labour market and business structures and investigate the role of the government and examine key issues and policies affecting economic performance.

● **Where will it take me?** The qualification is highly valued by many universities and employers. Employers value Economics graduates for their analytical way of thinking and problem-solving skills. Economics graduates are amongst the highest paid graduates and there are numerous career options in public and private sectors.

DISCOVER MORE AT AN
OPEN EVENT. SEE THE
INSIDE BACK PAGE FOR
DETAILS.



MEET THE STUDENT

Q&A

NOAH from Holsworthy studies English Language and Literature, Law and Politics A Levels and the Extended Project Qualification (EPQ). Noah also takes part in the Law Academy, is a Student Ambassador and member of the Student Council. He previously attended Holsworthy Community College.

● **Why did you choose Callywith College?** Callywith came highly recommended by close family and friends who had been previous students. When I visited on open days, I loved the feel of the campus and the keen and passionate lecturers. It also just felt right for me.

● **What do you enjoy most about your course?** The passionate lecturers and fun lessons are always engaging.

● **What's Callywith like?** Callywith is fun and enjoyable and feels like a great community.

● **What advice would you give future students?** Don't put off consolidation and revision, but make sure you also have a good balance of fun with friends.



A LEVEL ENGLISH LANGUAGE

● **Why choose this course?** Imagine you could take your innermost thoughts and insert them into someone else's mind. Well, language allows you to do this. You will explore questions like: How do we learn how to speak and write? Is language being corrupted or is linguistic change gr8?

● **What will I learn?** You will learn to analyse texts effectively while applying a range of theories and using detailed linguistic terminology. You will explore how spoken, written and multimodal texts are influenced by context and both reflect and construct personal identities.

The language analysed will be incredibly diverse from an informal text message between friends to a formal speech by the Prime Minister. You will also have plenty of opportunity to pursue your own interests in this subject and produce your own creative writing in a genre of your choice and conduct an independent investigation, which can focus on topics such as gender, power and journalism.

● **Where will it take me?** This course is highly valued by universities and employers and is an excellent subject to complement many courses, such as English Literature, Psychology, Sociology, Media Studies and Education. Some university courses also require English Literature.

A LEVEL ENGLISH LANGUAGE & LITERATURE

● **Why choose this course?** Love writing? Like to analyse...well, everything? This course allows you to be creative - not only in the fiction and non-fiction writing you will produce - but in your analytical work by imposing no rules as to how you should approach your analysis of a text. Word class? Sure. Imagery? Of course!

● **What will I learn?** Explore both non-literary and non-fiction texts and expect to study prose, drama and poetry as well as a range of texts such as articles, online copy and adverts. You will also explore the nature of spoken and multimodal language: how people talk and why they talk in the way they do. You will develop your creative writing in different genres, reflecting on your practice in order to become a critical reviewer of your own, as well as others' works. You will also explore how literature represents 'Society and the Individual' by studying Fitzgerald's 'The Great Gatsby' and Hansberry's 'A Raisin in the Sun'.

● **Where will it take me?** This A Level enables you to develop the key critical, creative and analytical skills required both for progression to higher education and for enhanced employability. The course provides a grounding for either Language or Literature at degree level and is an excellent subject to complement many courses, such as Psychology, Sociology, any media-related course, Communication and Education.

MEET THE TEAM Q&A

TRACEY WHITE
ENGLISH, LANGUAGES
& PERFORMING ARTS
PROGRAMME TEAM LEADER



Tracey, is the Programme Team Leader for English, Languages and Performing Arts at Callywith, ensuring that a high standard of provision is available to all students.

● **What part of working at Callywith College do you enjoy the most?** I am lucky to work alongside so many talented colleagues who are instrumental in making sure that we maintain the high standards we set for ourselves when Callywith first opened and are prepared to go 'above and beyond' in supporting our students and enabling them to receive the best possible education. We have a beautiful campus with wonderful facilities, and we strive to create a vibrant but hard-working atmosphere that we hope students will enjoy.

● **What one thing about you might surprise people?** I restore and upcycle furniture, pots, anything really! I like the idea of giving a new lease of life to something that no one else wants.

● **What advice would you give students considering applying for Callywith College?** First and foremost, know that your lecturers and personal development tutors want the best for you and will always be willing to help you in any way they can whether this be in the classroom or for extra support. Secondly, your studies will be more difficult and more demanding than at GCSE, but you will have time to complete work at college and I would use this time wisely, especially in creative subjects, to make full use of the college facilities. Finally, enjoy your time at Callywith, make new friends and fully participate in the many opportunities that will come your way.

A LEVEL ENGLISH LITERATURE

● **Why choose this course?** If you enjoy reading and analysing literary texts, then this is the course for you. You will study a range of challenging and stimulating works from a variety of periods from 1610-2010. The course offers opportunities for comparisons between texts and genres and considers works of literature in their historical and cultural contexts. You will learn the skills of close textual analysis and literary criticism.

● **What will I learn?** You will be introduced to dystopian fiction. A dystopia is a nightmarish society; writers use this genre to comment on and criticise their society. You will study Orwell's Nineteen Eighty-Four and (in Year 2) Atwood's The Handmaid's Tale. You will also study Williams' play A Streetcar Named Desire; the 19th century poems of Rossetti and Shakespeare's The Tempest. You will also study Ibsen's A Doll's House, a 19th century play with an ending so controversial Ibsen had to rewrite it in order to have it performed in Germany. You will also have a large degree of independence in your choice of texts and tasks for coursework.

● **Where will it take me?** This A Level is highly valued by universities. It provides an excellent grounding for studying English or other courses such as Modern Languages, Law and Teaching/ Education.

SEE MORE COURSE
DETAILS ONLINE.



See page 32 for entry requirements

A LEVEL ENVIRONMENTAL SCIENCE

● **Why choose this course?** The biosphere is an essential component in creating and maintaining life processes on Earth, unfortunately many species and biomes are under threat and you will be able to evaluate how effective management strategies are in trying to save many species from extinction. In your second year, we will examine further how humans affect the planet through our demand for energy sources, release of pollutants and need for biological resources.

● **What will I learn?** In the first year, you will study The Living Environment, The Physical Environment and Research Methods. You will then study the atmosphere, hydrosphere and mineral resources. In the second year you will study Energy Resources and Pollution, Biological Resources, Sustainability and remaining aspects of Research Methods. You will learn about the importance of energy resources and suggest solutions to minimise current and future pollution problems. You will study agricultural and aquatic food production systems and investigate how humans have increased productivity.

● **Where will it take me?** The course could lead you to a career with an environment agency, The National Trust, The Forestry Commission, local wildlife trusts, environmental consultancies, National Parks, recycling organisations, waste management and water quality organisations.



EXTENDED PROJECT QUALIFICATION - EPQ 1/2 A LEVEL EQUIVALENT

● **Why choose this course?** The Extended Project Qualification (EPQ) provides a unique opportunity to gain a qualification whilst studying a topic entirely of your own choice. It is equivalent to half an A Level and to be taken in addition to 3 other A Levels, rather than as a stand-alone subject. You will develop a range of functional and transferable skills to enhance university or job applications and be able to demonstrate passion for your intended degree and career path.

● **What will I learn?** The EPQ allows you to explore in depth a subject which you find interesting and engaging. Providing it can be researched in an academic way, anything is possible: you really are limited only by your imagination. You will research a topic that significantly extends your knowledge in your other subject(s), or one based on personal interests.

With the help of a dedicated supervisor, you will identify a focused title and aims then learn how to plan, research and carry out your project. Expect to become an expert in your chosen field! The outcome may be a 5000-word report or an artefact (a practical outcome) with an accompanying 1000+ word report. Additionally, you will provide evidence of your process and deliver a presentation.

● **Where will it take me?** Skills gained from the EPQ will not only benefit your other courses, but they are highly sought after by employers and universities. You will be able to discuss what you have learnt in personal statements and at interviews, really helping you to stand out in applications. The EPQ is worth up to 28 UCAS points and many universities lower course entry requirements based on a successful outcome (e.g. AAA or AAB with an EPQ). In fact, research suggests completing one enhances your chances of not only completing your degree but also obtaining a 1st or 2:1 (Southampton University, 2018).



A LEVEL FILM STUDIES

● Why choose this course?

Many consider film to be the main cultural innovation of the 20th century and the major art form of the last 100 years. Those who study it characteristically bring with them a high degree of enthusiasm for what is a powerful and culturally significant medium and this course offers the chance to gain hands-on experience of filmmaking and explore film language, history, theory and criticism. You will never see a film the same way again.

● **What will I learn?** You will begin by exploring how aspects of film language are motivated for expressive affect.

This includes an examination of the creative decisions involved in mise-en-scene, cinematography, editing, special effects and sound and a consideration of how the structuring concepts of narrative and genre control, meaning and spectator response. Film contexts are also explored, examining how social, cultural, political, historical and institutional factors shape meaning. Production work is a crucial part of the course and is integral to your study of film. Studying a diverse range of films from different contexts is designed to give you the opportunity to apply your knowledge and understanding of how films are constructed to your own filmmaking and screenwriting.

● **Where will it take me?** A qualification in Film Studies is highly valued by many universities and employers alike. Film Studies is also an excellent subject to complement many courses, such as Media, English, Psychology, Sociology, Photography, Art and Design.

A LEVEL FRENCH

● **Why choose this course?** A knowledge of French opens the doors to companies in France and other French-speaking parts of the world. As the world's fifth biggest economy and number-three destination for foreign investment, France is a key economic partner. That makes learning French an excellent choice for young people wanting to maximise their employment chances.

● **What will I learn?** You will be able to improve your language skills and learn vocabulary based on a variety of topic areas as well as grammar rules, which will enable you to make sense of the language and to use it accurately. You will have regular conversation sessions to help you improve your confidence in speaking. You will develop your knowledge of French-speaking countries and their culture, by studying various topics as part of your course, as well as a French film and a French book. Students will have the opportunity to take part in a visit to France during the course.

● **Where will it take me?** A qualification in French is highly valued by universities and employers alike. At university, French can be studied alone or combined with almost any other subject. Employment prospects are very good for graduates with a language qualification.



GET CONNECTED.
SEE MORE OF COLLEGE
LIFE ON SOCIAL.

See page 32 for entry requirements



MEET THE STUDENT

Q&A

ANGELUS from near Liskeard studies Film Studies, Photography and English Literature A Levels. He is a member of the Student Executive and a Student Ambassador. He was previously home educated.

● **Why did you choose Callywith College?** Callywith seemed like one of the best colleges in Cornwall based on reviews alone, but once I came for my first open day I was sold. The campus is so new and open and efficient, I basically fell in love!

● **What do you enjoy most about your course?** The best thing about my courses are my lecturers. I know it's cliché, but every one of them is so engaged in my progress and that of others I always feel supported- a far cry from my experience of secondary school, short as that was.

● **What are you hoping to do in the future?** In the future I hope to direct films. It's a big goal but step by step is the way. I have opportunities at Callywith to use professional cameras and equipment, speak to actual cinematographers, and meet directors themselves through all the copious careers events and networking lunches available. I am fully confident I have made the right step to working towards my dream.

MEET THE TEAM

Q&A

KAY TAYLOR PERSONAL DEVELOPMENT TUTOR



Kay is one of the college's Personal Development Tutors (PDT); providing pastoral support to students during weekly personal development sessions.

● **What inspired you to pursue a career in education?** I have been lucky enough to have had some great teachers growing up - they showed me the impact a supportive, interested educator can have. After my PGCE I taught for several years on both A Levels and on diploma courses. I love helping students, especially seeing that moment when something clicks for them. The energy of the classroom, the chance to learn from students, and sharing my passion for my subject all make teaching deeply rewarding.

● **What does your role as a PDT involve?** The Personal Development Tutor role is full and varied. I spend half my week in the classroom with my different tutor groups delivering the Personal Development programme. We look at topics such as young people and the law, independent living, financial literacy, mental health and digital wellbeing to name just a few. One lesson we could be sewing on a button or taking part in a duvet challenge, and then another lesson working out tax, National Insurance and payslips or learning about UK law. Each weekly topic is designed to support our students here at Callywith to become well rounded, resilient, informed individuals who are prepared for their next steps after college. The rest of my week is spent supporting students individually through their learner journey whether that be with attendance, progress on their courses, supporting them in overcoming any barriers to success, or by guiding them in their university, apprenticeship or career applications.

● **What do you enjoy most about working at Callywith?** The people I work with - both students and staff. The whole atmosphere at Callywith College is one of aiming high and striving to become the best version of yourself but all within a supportive, friendly and kind environment. The staff are fantastic - knowledgeable, dedicated and supportive and the students are respectful, kind and hardworking.

A LEVEL GEOGRAPHY

● Why choose this course?

This course offers an exciting issues-based approach to studying both physical and human aspects of the subject. Applying your geographical knowledge, understanding and skills to the world around you, you will engage critically with a wide range of complex contemporary issues such as tectonic hazards, climate change, resource insecurity, globalisation and superpowers.

● **What will I learn?** You will make links between varied geographical concepts through synoptic themes embedded in the subject content including the different players involved in geographical issues and decisions, why attitudes to geographical issues vary so greatly and how this influences actions as well as futures and uncertainties. Inspired by geography as one of the key disciplines relevant to understanding the world's changing places and people, you will also develop a sense of achievement as you grow as a critical, independent thinker and as an informed and engaged citizen.

● **Where will it take me?** A qualification in geography is highly valued by many universities and employers alike. Geography is also an excellent subject to complement many other A Level courses, such as Environmental Science, Geology and History.

DISCOVER MORE AT AN
OPEN EVENT. SEE THE
INSIDE BACK PAGE FOR
DETAILS.



A LEVEL GEOLOGY

● **Why choose this course?** If you are fascinated by fossils and their evolutionary roots, which forces drive volcanoes and tsunamis, or perhaps you are concerned about the environmental consequences of the extraction of oil and gas and radioactive materials, then A Level Geology may be for you.

● **What will I learn?** You will investigate the Earth from its meteorite origins through to the range of rocks found in its different layers and surface environments. You will discover how geologists need a multitude of different skills to accurately measure and describe features in the environment and develop these skills through field trips in the UK and abroad.

You will use geological maps and cross sections to investigate the difficulties of finding and extracting resources as well as studying the evolution of life on Earth and how geologists can use this knowledge to re-construct a geological timescale stretching back a billion years.

● Where will it take me?

Geologists are required in the oil industry, mining, materials science, hydrogeology (water resources), civil engineering, geotechnical engineering, public services, geohazard prediction and mitigation, scientific research (e.g. climate change, seismology) and education.

A LEVEL GERMAN

● Why choose this course?

Did you know that Germany is the UK's second largest trading partner after the USA? In fact, approximately 75% of UK international trade is with non-English speaking countries. It is therefore not surprising that British businesses are looking for linguists, and, in particular, for people who can speak German. That makes learning German an excellent choice for young people wanting to maximise their employment chances.

● **What will I learn?** You will develop all four language skills: speaking, reading, listening and writing by using a wide range of materials, both in and outside the classroom. You will also have the opportunity to take part in our exchange to Göttingen, which includes five days of work experience. You will develop your knowledge of German-speaking countries and their culture by studying various topics as part of your course, as well as a German film and a German book.

● **Where will it take me?** A qualification in German is highly valued by universities and employers alike. At university, German can be studied alone or combined with almost any subject. Employment prospects are very good for graduates with a language qualification.

APPLY NOW
FIND OUT HOW ON
PAGE 98.

See page 32 for entry requirements



AAQ EXTENDED CERTIFICATE HEALTH & SOCIAL CARE A LEVEL EQUIVALENT

● Why choose this course?

This course is equivalent to one A Level and has been designed to be part of a typical two-year study programme, alongside A Levels. This course provides a solid foundation for careers in healthcare, social work, and allied health professions. It integrates theoretical knowledge with real-world applications, preparing students for both higher education and employment. With a growing demand for skilled professionals, this course offers a rewarding path to making a positive impact on people's lives.

● What will I learn?

This course provides the knowledge, understanding and skills that will prepare learners for further study. You will study four units over two years, this includes two externally assessed units and two internally assessed units. The four units are Human Lifespan and Development, Human Biology and Health, Health and Social Care Practice and Health Science.

● Where will it take me?

This course provides students with a comprehensive exploration of the health and social care sector. This qualification is designed to complement A Levels as part of a study programme and aligns well with subjects like Psychology, Biology, or English. It is ideal for students aiming to pursue higher education as a pathway to future employment.

A LEVEL HISTORY

● Why choose this course?

The study of history helps us to understand and explain the past and is a fascinating subject in its own right. The course allows students that have studied GCSE History to develop their enjoyment and understanding of major world events.

● What will I learn? You will study the British Empire between 1857 and 1967 as well as the rise and fall of Weimar and Nazi Germany, 1918-1945. The final component comprises a historical investigation, looking at the history of the USA from 1763 to 1865. You will examine primary sources, extracts from historians and complete a 3,500 word piece of research.

● Where will it take me? History is a popular and highly regarded qualification by both universities and employers. The skills that you acquire as a historian, the ability to think clearly, to weigh up arguments and to analyse problems, are highly desirable. History students gain access to a wide variety of careers including business, law, marketing, media, and politics as well as career pathways including archaeologist, archivist, curator and teacher.



GET CONNECTED.
SEE MORE OF COLLEGE
LIFE ON SOCIAL.



**CHECK IT OUT. SEE
THE STATE-OF-THE-
ART CAMPUS AND
FANTASTIC FACILITIES
THROUGH OUR 360°
INTERACTIVE
CAMPUS TOURS.**



A LEVEL LAW

● Why choose this course? Law pervades every aspect of our lives; from a personal decision to purchase a concert ticket to encompassing major constitutional issues such as the complexities involved in the triggering of Article 50 in respect of our departure from the European Union. Law is an excellent choice for students who are keen to branch out and learn something new while developing a highly desirable skill set.

● What will I learn? You will have the opportunity to examine the various sources of law within our English legal system and explore both private (tort) and public law (criminal & human rights).

You will be encouraged to engage fully and critically with current affairs, develop high-level skills in research, communication, analysis, ICT and debating and will experience the practical realities of advocacy. There will be opportunities to visit the local Crown and Magistrates Courts. Guest speakers include judges, solicitors, barristers and court reporters, who visit the college to help provide an insight into careers within the legal system. Law is a natural partner to English and History as well as Psychology and Sociology.

● Where will it take me? The study of law is for everyone, not just lawyers. Law A Level is highly valued by employers. Studying Law could not only lead to a career in the legal profession as a barrister, solicitor, coroner, legal executive or paralegal, but also to work in the commercial sector, business and finance, social welfare or politics.



A LEVEL MATHEMATICS

● Why choose this course?

Mathematics is a challenging and stimulating course that will encourage you to develop your mathematical skills, improve your ability to think logically and enable you to determine solutions to a wide range of problems. If you enjoyed studying GCSE Maths, particularly the more algebraic topics, and would like to significantly improve your mathematical skills, then this would be an ideal subject for you.

● **What will I learn?** You will need to be good at algebra before you start the course. Throughout the course, you will learn many new mathematical techniques and apply them to a variety of practical situations. At this level, mathematics is all about applying your knowledge to solve problems in real-life situations. You need to be logical so that you can follow a mathematical argument, and you need to be creative so that you can look for different ways to apply your skills to solve a problem.

● **Where will it take me?** Mathematics is a versatile qualification that is well respected by employers and will be desirable if you are thinking of going on to study courses in subjects such as Computing, Economics, Engineering, Finance, Geography, Psychology or any of the sciences at degree level.

A LEVEL MATHEMATICS - FURTHER

● Why choose this course?

Enjoy solving puzzles and playing strategy games? Want to develop a deep understanding of big ideas and to know 'why' and not just 'how'? Do you want to develop problem-solving, logical reasoning, communication and resilience skills? Then this course is for you.

● **What will I learn?** By studying Further Mathematics you will increase your knowledge and understanding of mathematical techniques and their applications. Further Mathematics is a full A Level qualification that you can take alongside Mathematics. The course is designed to stretch and challenge able young mathematicians by introducing you to new techniques and concepts, such as complex numbers and matrices.

● Where will it take me?

A qualification in Further Mathematics is highly valued by universities and employers. There are obvious links with Computing, Sciences and Finance based courses but the course can also be useful for sharpening up thinking skills, logical reasoning and pattern spotting. Many universities require Further Mathematics for admission to Mathematics degrees, some also prefer applicants for Engineering, Computing, Economics and Actuarial Science courses to have studied Further Mathematics.

SEE MORE COURSE
DETAILS ONLINE.



See page 32 for entry requirements



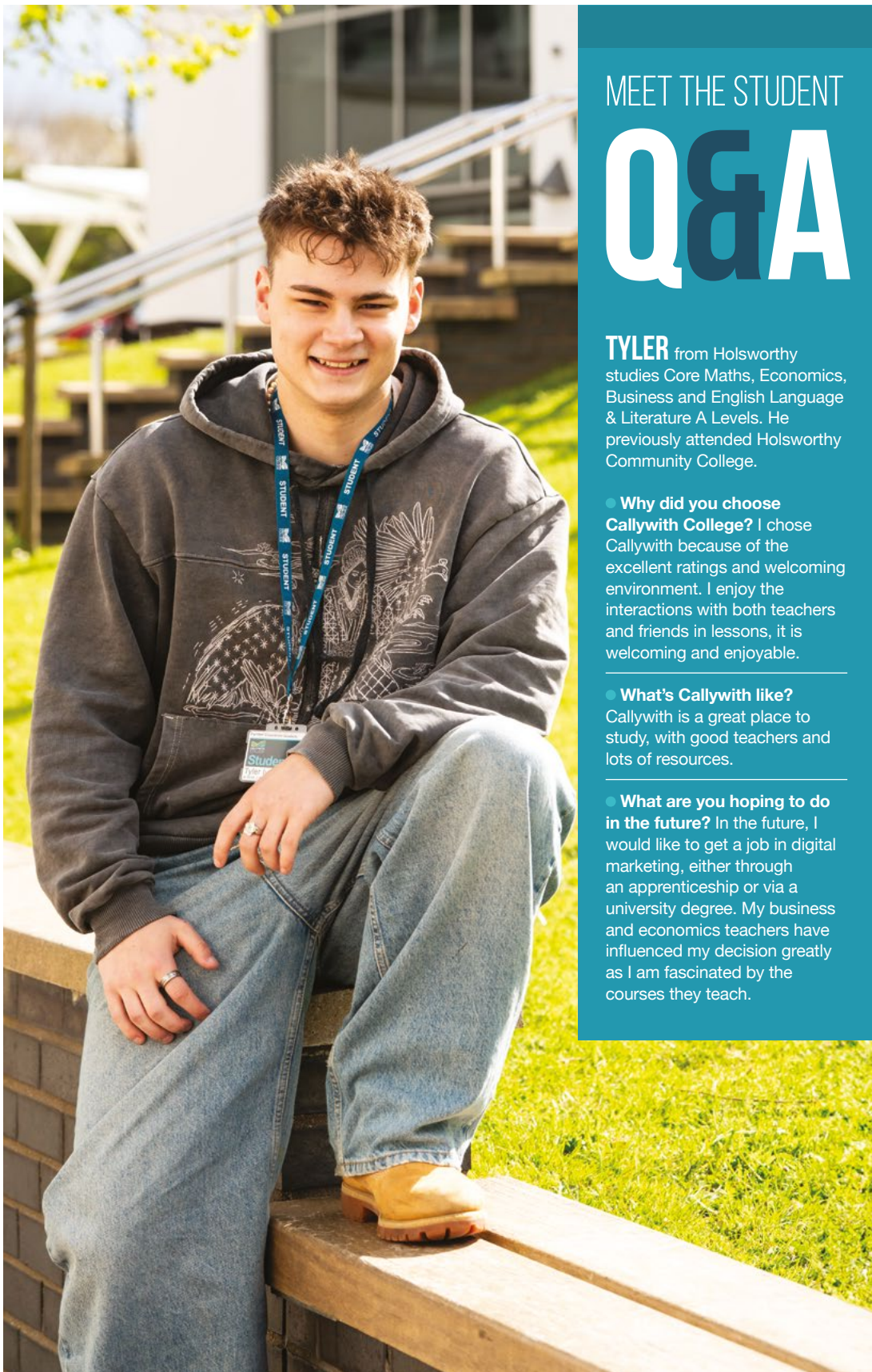
MEET THE STUDENT Q&A

KINGSLEY from St Austell studies Maths, Physics and Chemistry A Levels. He previously attended Poltair School.

● **Why did you choose Callywith College?** I like the campus and the wide range of courses available. I attended an Open Event, and the teachers seemed knowledgeable in their subjects. The college also felt like a good size in terms of the number of students. I looked at other colleges, but Callywith felt like the perfect in-between - a great step between secondary school and university.

● **What's Callywith like?** It's a great environment. Once you settle in, you start to recognise familiar faces around campus and get to know a lot of people. The teachers know who you are and are always there to support you if you're struggling. The staff genuinely have your best interests at heart and want to see you succeed.

● **What do you enjoy most about your courses?** I like that my courses challenge me, you have to put in hard work, but it pays off in the end. I especially enjoy the practicals in Physics and Chemistry. They're very interactive, you're not just learning the theory, but also understanding what you're doing and why it matters.



MEET THE STUDENT

Q&A

TYLER from Holsworthy studies Core Maths, Economics, Business and English Language & Literature A Levels. He previously attended Holsworthy Community College.

● **Why did you choose Callywith College?** I chose Callywith because of the excellent ratings and welcoming environment. I enjoy the interactions with both teachers and friends in lessons, it is welcoming and enjoyable.

● **What's Callywith like?** Callywith is a great place to study, with good teachers and lots of resources.

● **What are you hoping to do in the future?** In the future, I would like to get a job in digital marketing, either through an apprenticeship or via a university degree. My business and economics teachers have influenced my decision greatly as I am fascinated by the courses they teach.

LEVEL 3

MATHEMATICAL STUDIES - CORE

MATHS 1/2 A LEVEL EQUIVALENT

● **Why choose this course?** Throughout the course you will learn many new mathematical techniques and apply them to a variety of practical situations. Studying Core Maths will support the study of several other subjects, such as Physics, Chemistry, Biology, Geography, Psychology, Sport, Economics, Engineering, IT and Business Studies.

● **What will I learn?** The Core Maths course will extend some of the key ideas from GCSE Mathematics such as coordinate geometry, statistics and algebra. You will also meet material that may be new to you such as logarithms, functions and finance. You will use the core material to solve practical problems and find out about some of the background stories behind the ideas. You will also learn about statistical distributions and graphical techniques. The initial part of the course will follow similar content to A Level Mathematics and there will be a possibility at the start to switch to the two-year A Level course if it is deemed more appropriate.

● **Where will it take me?** A qualification in Level 3 Mathematical Studies is valued by many universities and employers. Level 3 Mathematical Studies will be desirable if you are thinking of going on to study courses in subjects such as Computing, Economics, Engineering, Finance, Geography, Psychology or any of the Sciences at degree level.



A LEVEL MEDIA STUDIES

● **Why choose this course?** The media play a central role in contemporary culture, society and politics. They shape our perceptions of the world through the representations, ideas and points of view they offer and have real relevance and importance in our lives today, providing us with ways to communicate, forms of cultural expression and the ability to participate in key aspects of society.

● **What will I learn?** You will study a wide range of media products, undertaking detailed analysis of how the media communicate meanings in a variety of forms.

You will debate the social, cultural and economic relevance and impact of the media as well as the way TV, radio, film, news, music, publishing, social media, advertising and games are constructed to better understand the powerful and complex messages we receive. You will also develop photography and design skills using Adobe Photoshop and InDesign as well as developing web and film skills.

● **Where will it take me?** The course can lead to a degree in areas such as Journalism, Graphic Design, Advertising or Film and TV production. You will not only develop practical skills and a critical awareness of the media but also employability skills such as communication, interpersonal, organisational and problem-solving skills.



AAQ EXTENDED CERTIFICATE MEDICAL SCIENCE A LEVEL EQUIVALENT

● **Why choose this course?** This qualification is equivalent to one A Level and it has been designed to be part of a typical two-year study programme, alongside A Levels. It is a great choice if you are looking for a career where you would like to make a difference to the health and lives of others. It is suitable for students looking to develop their applied knowledge and skills in medical sciences as part of a study programme alongside two other level 3 qualifications, such as physical education, sociology, chemistry and psychology (due to course similarity it would be unsuitable to study biology alongside).

● **What will I learn?** The course gives you a broad understanding of biological principles including cells, tissues, biological molecules, genetics, immunology, pathology and practical skills in microbiology as well as diseases, diagnostic techniques and treatments. You will learn how to carry out investigations using a variety of tests and techniques essential to laboratory practice. You will complete a range of written reports, projects, practical assessments and presentations.

● **Where will it take me?** This qualification is an excellent preparation for many careers such as Nursing, Sports Science, Midwifery, Occupational Health and Health & Social Care. In addition, the course can lead to progression into a range of allied health professions such as diagnostic and therapeutic radiography, paramedicine, dietetics and many other routes.

A LEVEL PHILOSOPHY OF RELIGION & ETHICS

● **Why choose this course?** This course addresses some of the big questions that face human beings like: What is the purpose of my life? What am I? How should I live? And why should I do what is right? Is there a God? And if so, what sort of God might that be? If you are the type of person who is accused of thinking too much, if Google can't answer your questions and if you like spending time wondering whether your real life is the one in your dreams and that you are reading this in your sleep, then this course might be for you.

● **What will I learn?** The course aims to take these problems seriously and attempt to find real answers to them by attempting to apply rigorous logic, finding the right types of evidence and evaluating possible approaches. It is not about sharing opinions; it is about the meticulous analysis of the problem and scrupulous attention to detail.

● **Where will it take me?** Philosophy of Religion & Ethics is recognised as a respected entrance qualification by all universities, and employers are aware that it helps to develop an individual's ability to communicate, work with others and solve complex problems. Given the emphasis on ethics in this course it might be useful for those considering careers in law or medicine.

APPLY NOW
FIND OUT HOW ON
PAGE 98.

A LEVEL PHOTOGRAPHY

● **Why choose this course?** Photography is an art of observation. It has little to do with the things you see and everything to do with the way you see them. It allows us to tell our story and show others our framing of the world around us. This course provides opportunities to engage in projects that encourage creativity, investigation, analysis and experimentation as a means of developing technical and expressive skills.

● **What will I learn?** The course encourages the development of your own visual language while improving your understanding of the broad visual, cultural and theoretical contexts in which contemporary photographers operate. You will learn a broad range of photographic and camera skills (both analogue and digital) utilising traditional darkroom and digital Photoshop techniques. The course will teach you to appreciate photographic theory and practice and to understand the work of artists and pioneers in the development of the photographic medium.

● **Where will it take me?** Successful completion of the course can lead to further study or employment in all areas of lens-based and visual arts including art foundation, media, film, multi-media, graphic design, journalism, advertising, illustration and PR.

SEE MORE COURSE
DETAILS ONLINE.



A LEVEL PHYSICS

● **Why choose this course?** If you are interested in questions like: What happens if I go into a black hole? What is a Higgs boson? And what happens if I travel near to the speed of light?, then this course will challenge you to consider these questions - and many more.

● **What will I learn?** Physics allows you to understand the fundamental structure of the universe from atoms (or smaller!) to galaxies (or bigger!) and how the matter within the universe interacts. You will discover that the same underlying physical laws can be applied from everyday situations such as electric circuits or theme park rides to complex situations like particle accelerators or black holes.

● **Where will it take me?** To study Physics, Electronics or Engineering at degree level you will need A Level Physics. However, an understanding of physics is also desirable for Mathematics, Computer Science, Chemistry, Geology, and many other university courses. Studying the physical sciences at university level provides you with problem-solving, communication, creativity and teamwork skills, as well as opportunities in careers within many exciting fields of work including meteorology, finance, law and journalism. Students are strongly encouraged to study A Level Mathematics alongside Physics. Those who want to study a degree in Physics or Engineering must study A Level Mathematics.



MEET THE STUDENT

Q&A

TALIA from Launceston studies Psychology, Sociology and English Literature A Levels. She previously attended Launceston College.

● **Why did you choose Callywith College?** The range of courses offered really suited my interests and goals for the future, I also wanted to be in a new environment and to meet new people.

● **What do you enjoy most about your course?** I enjoy how interactive the lessons are, there's a really good balance of independent work and group discussions. Each subject also offers something different, so I enjoy being able to explore the topics I'm interested about in more detail.

● **What's Callywith like?** Callywith is a really great place to study, you're treated more like an adult but still have the help you need. The lecturers are very friendly, supportive and want you to do well, whilst the lessons alone are very interesting and well structured. The campus is also modern and nice which makes studying here more enjoyable.

● **What are you hoping to do in the future?** In the future, I'm hoping to go to university to study either psychology, sociology or both and work in the mental health field.

A LEVEL POLITICS

● **Why choose this course?** The study of politics is the study of power. Who has it? Why do they have it? How can we change this? In addition, the subject allows you to develop your skills in critical thinking and analysis, skills valued in higher education and employment.

● **What will I learn?** In your first year, you will study politics in the United Kingdom, including how our government works, the political parties within it, and the influence of the media and voters. You will also look at key political ideas including Liberalism, Conservatism, Socialism and Feminism. In the second year, you will study the way the world is governed - from democracies to dictatorships, how nations compete and cooperate, as well as the importance and limitations of international organisations such as the United Nations.

● **Where will it take me?** Students who study this course often go on to do History, Law, Politics, International Relations, and Philosophy at university - all of which allow progression into multiple careers in different sectors, such as business, law, marketing, media, not-for-profit organisations, pressure groups and of course a career in politics.

DISCOVER MORE AT AN
OPEN EVENT. SEE THE
INSIDE BACK PAGE FOR
DETAILS.

See page 32 for entry requirements



A LEVEL PSYCHOLOGY

● **Why choose this course?** A successful Psychology student has an appetite for understanding how scientific principles can be applied to human behaviour. If you are interested in people and inquisitive about their behaviour, this is the subject for you.

● **What will I learn?** Psychology is the science of mind and behaviour. We look at people's motivations behind different behaviours from a scientific point of view. We explore research into behaviours in an attempt to explore answers to questions such as: Are some people just born evil? Are each of the hemispheres of the brain responsible for different functions and behaviours and how would we know?

Topics range from biological explanations of behaviour to how interacting with other people can influence your behaviour.

● **Where will it take me?** Studying Psychology will equip you with numeracy, communication, IT, organisation and analysis skills and provides a valuable background for a variety of careers including management, personnel, advertising, marketing, teaching, uniformed services, nursing, health and welfare. Further training and experience beyond degree level is usually required for qualification as a professional psychologist; clinical, educational, forensic or organisational.

MEET THE TEAM

Q&A

TOM EVANS
SOCIAL SCIENCES
PROGRAMME TEAM LEADER



Tom is the Programme Team Leader (PTL) for Social Sciences.

● **What does your role involve?** Making sure that all social sciences students have an excellent experience, make outstanding progress, and get the resources and guidance they need to move onto the next stage of their lives after college. I work with an amazing team of lecturers to understand each student as an individual and create the right environment for a challenging, supportive, and inspiring academic experience.

● **What inspired you to pursue a career in education?** I think everyone wants their life to have meaning, you just have to work out how your talents can allow you to do that. It turns out that teaching was my thing. Learning is such a fundamental and essential part of an individual's experience in life and if you work in education, you are always learning. It is a lot of fun.

● **What about working at Callywith College do you enjoy the most?** It is a community of people who are unique and interesting in their own individual ways. It celebrates and nurtures that.

● **When you're not working, what is your favourite thing to do?** Be in or by the sea.

● **What advice would you give students considering applying for social sciences courses at Callywith?** Visit the college on one of our open days, talk to our lecturers, ask them questions, get a feel for the environment you will be working in. Like all academic disciplines, people want to study a subject because they have a genuine interest and enthusiasm for it. Whatever aspect of social sciences inspires you, read something, watch something, listen to something. Think about what you think. Social sciences work much better when people come with their own views, beliefs and opinions and are willing to listen to others.

A LEVEL SOCIOLOGY

● Why choose this course?

Sociology is the study of society, explanations of social behaviour and an investigation into individuals' relationships with society. Sociologists would claim that society is the single most important influence in your life and would argue that our behaviour can be largely explained by social circumstances and experiences.

● **What will I learn?** This course considers points of view on society, including those that largely approve of the way it works (Functionalism) to those that argue for change (Marxism and Feminism). You will learn to think critically and independently about society and your place in it, and develop a critical and informed understanding of the world around you. Topics include: Families and Households, Education, Theory and Methods, Beliefs and Crime and Deviance.

● Where will it take me?

Sociology is highly valued by many universities and employers and provides students with valuable analytical and evaluative skills. The objective and rigorous nature of this subject can lead to a range of careers, such as management, human resources, social work, the civil service, the criminal justice system, national or local government and law.



GET CONNECTED.
SEE MORE OF COLLEGE
LIFE ON SOCIAL.

A LEVEL SPANISH

● Why choose this course?

Spanish is the official language in 20 countries and, with more than 480 million native speakers, is the second most widely spoken mother-tongue language in the world. Spanish is one of the official languages of the United Nations, the European Union and numerous other international organisations. A language qualification is highly valued by universities and employers alike and there are ever increasing opportunities for Spanish speakers to work in Europe, Latin America and the US.

● **What will I learn?** You will gain fluency, develop skills in speaking, reading, listening, writing and translation, and build knowledge of the culture of the Spanish-speaking world through the study of various topics, as well as a Spanish language film and book. Once a week, you will have a conversation session to help you gain confidence in speaking and prepare for the oral exam. There will also be an opportunity to take part in a study visit to Granada in Andalucía.

● **Where will it take me?** Spanish can be studied alone or combined with almost any other subject including Business, Law and Science. Spanish is of huge global importance and your language skills could lead to a career in a wide range of sectors, including teaching, translation, interpreting, subtitling, journalism, academic research, government, diplomacy, international development, hospitality, business and marketing.



EXTENDED CERTIFICATE SPORT & EXERCISE SCIENCE A LEVEL EQUIVALENT

● Why choose this course?

This course is equivalent to one A Level and it has been designed to be part of a typical two-year study programme, alongside A Levels. This course will suit you if you have an interest in undertaking a sport or health related career such as sports nutrition, sports psychology, strength and conditioning, sports therapy, physiotherapy, or sports coaching, amongst many others.

● **What will I learn?** With a strong academic focus, this course will suit you if you have an interest in the scientific study of sports performance. You will discover how to apply theoretical and practical techniques to analyse and improve the sporting performance of yourself and others.

There are two formal externally set assessments in Functional Anatomy and Applied Sport and Exercise Psychology, a mandatory internally assessed unit in Coaching for Performance and Fitness and one optional unit to be chosen from Specialised Fitness Training, Biomechanics or Physical Activity for Individual and Group-based Exercise.

● **Where will it take me?** You will develop a wide range of skills and knowledge that will enable you to either progress onto Higher Education or into employment in sports related industries, especially into those requiring a scientific background. The course also carries UCAS points towards studying a whole raft of different degrees at university which are not necessarily directly linked to Sports Science.

SEE MORE COURSE
DETAILS ONLINE.



WHY CHOOSE A VOCATIONAL COURSE AT CALLYWITH COLLEGE?

- 1 Ideal for those who know the area of study or career they would like to pursue.
- 2 Specialist modules will give you in-depth knowledge and experience.
- 3 A widely accepted route to university where the vocational subjects are compatible.

DIPLOMA & T LEVEL COURSES

64

LEVEL 2 WITH MATHS & ENGLISH

● Why choose this course?

Our Level 2 offer provides a valuable opportunity for students who did not meet the entry requirements for Level 3 study to continue their education in a supportive and structured environment.

● What will I learn?

This one-year programme is designed to help students build the skills and qualifications needed to progress onto a Level 3 course the following year. The course includes a range of Level 2 qualifications including GCSE English and Maths, with a strong focus on developing study skills and independent learning.

● Where will it take me?

With dedicated guidance and support, students are prepared both academically and personally for the demands of further study. Entry requirements for the course are a minimum of three GCSEs at grade 3, including English and Maths.



LEVEL 3 EXTENDED DIPLOMA APPLIED SCIENCE

● Why choose this course?

This course is designed to give you a detailed understanding of aspects of science with an emphasis on the skills and knowledge used in many fields of science including forensic, medical, chemical and biological sciences.

● What will I learn?

You will study a range of core scientific and specialist units that will develop your scientific understanding. You will develop your practical skills through a series of assignments and challenging investigations that utilise techniques used by scientists in industry.

These include microscopy, spectroscopy, genetic analysis, chemical and biological testing. The course also covers aspects of medical science including applications of physics, physiological investigations and diseases and infections.

● Where will it take me?

Various careers are possible including hospital and research laboratories, school or college laboratories, forensic laboratory work, and scenes of crime work. The course can also lead to various science-based courses at higher education including Chemical and Biological Sciences, Criminology and Forensic Science, Biomedical Science, Radiography, Food and Nutrition and Pharmaceutical Science.

LEVEL 3 EXTENDED DIPLOMA ART & DESIGN

● Why choose this course?

You will discover how artists, designers and makers see the world and learn how they develop and realise their original ideas in both gallery and commercial settings. You will be able to use art and design to communicate your innovative ideas effectively and realise your potential within the creative industries.

● What will I learn?

Your journey will begin with experimentation and development of essential art and design skills in all the specialist areas we offer. Your diploma programme will combine nine creative areas by themes, enabling you to discover your interest, including: digital, fine art, graphic design, contextual understanding, life drawing, printmaking, textiles and three-dimensional design.

● Where will it take me?

The Extended Diploma will provide you with the opportunity to utilise and develop broad, transferable skills, encouraging your personal and professional development. Progression to a higher education degree course is usual, allowing direct access to courses such as: Fine Art, Illustration, Interior Design, Fashion, Architecture, History of Art, Film, Prosthetics and Theatrical Make Up, Therapy and Education.

LEVEL 3 EXTENDED DIPLOMA ART & DESIGN - PHOTOGRAPHY

● Why choose this course?

If you enjoy creating photographic images, then the course will stretch and challenge you by providing an opportunity to engage in projects that encourage creativity, investigation, analysis and experimentation as a means of developing technical and expressive skills.

● What will I learn?

You will learn a broad range of analogue and digital photographic skills using the darkroom, an industry-standard studio and appropriate software. You will also be introduced to a range of theoretical perspectives which influence the development of image making. This will encourage you to consider how photography is relevant to wider creative practices as well as its links to political, social and cultural discourses. Divided across 13 units, the course will allow you to apply your skills to a range of contexts including advertising, editorial and fine art, while enabling you to make creative decisions to replicate the demands of the industry.

● Where will it take me?

Completion of this course usually results in students going to university to study courses aimed at working within the wider creative industries. Completion of this course allows access to a range of creative courses including photography, documentary photography, graphic design, film and moving image production and arts education.

LEVEL 3 EXTENDED DIPLOMA BUSINESS

● Why choose this course?

Want to start your own business? Make your ideas happen? Create exciting advertising campaigns? Learn how to manage a team of professionals? Or ever wondered how a business operates in an ever changing environment? Then this course is for you.

● What will I learn?

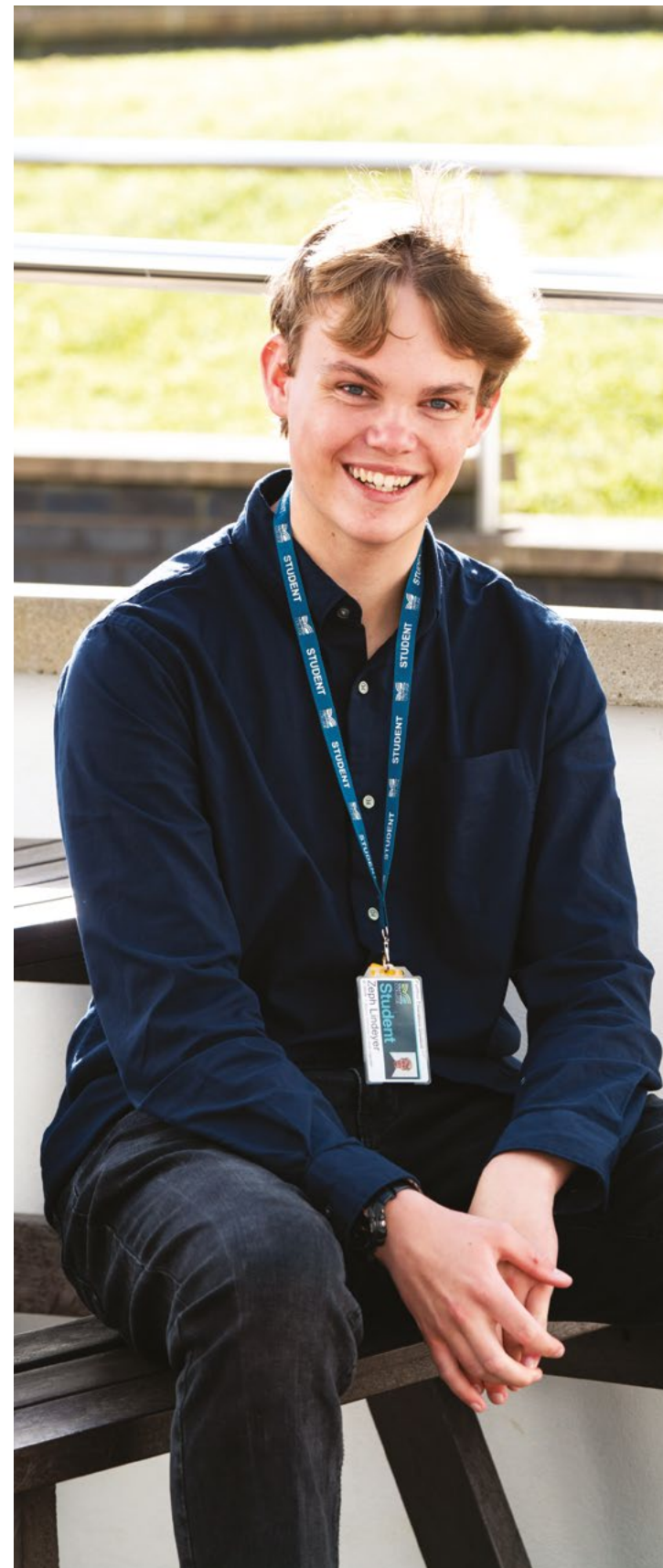
The course will provide you with an understanding of how marketing, human resources, accounts, operations, sales, project teams, management teams and directors and customer service interlink to achieve business aims and objectives, together with essential knowledge of how the business environment impacts upon successful business planning. The course will enable you to acquire vital skills and the critical awareness necessary for managing teams and creating value for a business, while preparing you for your career. There are various optional units including: Recruitment and Selection, Events Management and Corporate Social Responsibility.

● Where will it take me?

Business is such a diverse subject that there are a wide number of progression opportunities available ranging from studying the subject further at higher education, securing a business-related Apprenticeship or even starting your own small business.

APPLY NOW
FIND OUT HOW ON
PAGE 98.

See page 32 for entry requirements



MEET THE STUDENT Q&A

ZEPH from Saltash studies the Level 3 Extended Diploma in Creative Media Production & Technology. He previously attended Saltash Community School.

● **Why did you choose Callywith College?** The course offered me the chance to develop my interest in media production and the facilities on offer were up-to-date and similar to those in the wider media world. The course looked really interesting (and was 100% coursework, which appealed!) I also liked the fact that it's a halfway house between school and university.

● **What do you enjoy most about your course?** I enjoy the creative element of my course. You get given a brief on a subject to complete, a few criteria to hit but other than that, it is entirely up to you as to how you proceed. It's all practical with minimal theory and it helps prepare you for the real world of media by teaching you skills which you can apply both in and out of college.

● **What's Callywith like?** Callywith is supportive whilst encouraging us to be independent. There's a lot of trust from the leadership and tutors and I think that the students rise to the challenge.

LEVEL 3 EXTENDED DIPLOMA CREATIVE MEDIA PRODUCTION & TECHNOLOGY

● Why choose this course?

The media is a powerful entity that plays a significant role within society. The centrality of the media to human experience - from the conduct of everyday life to the exercise of power, to the creation of culture - is inescapable. We live in an intensely mediated world, as philosopher Marshall McLuhan famously said, "The Medium is the Message."

● What will I learn?

The course provides an opportunity for you to engage with a diverse range of media - TV, filmmaking, radio, animation, photography, graphic design, social media, marketing - often in the form of 'live' or 'real-world' briefs and assignments where you will explore, develop and test your creativity within a stimulating and demanding environment. The course will provide you with opportunities to develop and utilise broad, transferable skills through encouraging an ethos of personal and professional development.

● Where will it take me?

This course is about progression: it is designed to build up your portfolio of work and provide you with the knowledge, skills and understanding necessary to enable you to apply to a higher education course, or gain employment in the exciting and dynamic creative media industries.



T LEVEL EDUCATION & EARLY YEARS

● Why choose this course?

If you have an interest in education and early years, then the T Level may be the right course for you. In addition to your college studies, you will undertake a placement within a childcare/education setting for two days a week.

● What will I learn?

In 2026, the Education and Early Years pathway will be offered. This pathway will consist of studying core topics to gain knowledge and understanding, an industry placement and occupational specialist topics.

Core topics include: an overview of childcare and education (0-19), child development, supporting education, safeguarding, health and safety and wellbeing, behaviour, observation and assessment, equality and diversity, Special Educational Needs and disability, English as an additional language, parents, families and carers, working with others and reflective practice. Students will study and be assessed on occupational specialism topics and their work within placement.

● Where will it take me?

On successful completion of the Technical Level 3 Certificate in Education & Early Years, you will be ideally placed to seek employment in a variety of roles, such as an early years educator, nursery nurse, nanny, teaching assistant, or learning assistant. Alternatively, you may continue on to higher education courses in Early Years and Family Studies, or Primary Teaching.

APPLY NOW
FIND OUT HOW ON
PAGE 98.

LEVEL 3 EXTENDED DIPLOMA GAMES ART, ANIMATION & DEVELOPMENT

● Why choose this course?

If you want to make your passion for gaming, art or animation into a career, this is an exciting opportunity to build your portfolio and analysis skills.

● What will I learn?

The Diploma covers all the fundamental skills required in art, animation, visual effects, games design, principles of 3D design, visual scripting and knowledge of the ecosystem of the industries. The Extended Diploma develops more sophisticated technical skills, industry working practice, project and production management including the common practice of Agile and Scrum techniques, as well as the opportunity to engage in specialism pipeline workflows of pre-production design, development production and post-production refinement. Both years incorporate a Final Major Project, where you write your own briefs which build into a professional portfolio for university and career progression.

● Where will it take me?

After building a clear understanding of art analysis skills and technical problem solving in an array of industry standard software, you can take these skills into a range of creative fields. You can apply these core principles into the films, art, animation, games or architectural visualisation industries. Most of our students progress onto Higher Education but others decide on higher level apprenticeship or freelance work.

MEET THE TEAM Q&A

SAM WINTERS
DEPUTY TEAM LEADER
FOR MEDIA, FILM & GAMES
DESIGN



● **What is your background in education?** Following A Levels at Truro College and studying Games Development at Penwith College, I progressed onto Falmouth University to study Computer Science and Games Development. Overall, my journey has been one of flexibility, bouncing from programming to art, psychology, and design, all contributing to better problem-solving skills and sources of game design inspiration.

● **What does your role involve?** I support students in their desire to become artists, game designers and IT professionals. These industries have captured the attention of the world, with an explosion of lucrative and evolving positions to respond to emerging technologies and interest. These skills taught are transferrable to a range of industries including architecture visualisation, graphics design, advertising, games development, etc. I guide students through workshops in games engines such as Unreal Engine 5, to build 2D and 3D games, where students are encouraged to incorporate their own ideas. These games are then developed through asset creation in 3D software such as 3Ds Max and textured using Substance Painter.

● **What about working at Callywith College do you enjoy the most?** Callywith College is a wonderfully supportive place for staff and students alike. With a dedicated student support team, students are given the personal and academic support to ensure the best experience.

● **What advice would you give students considering applying for Callywith College?** Consider what personal skills and goals you would like to set for yourself. By reviewing your current skill set and opening yourself up to learning something that may be challenging but ultimately rewarding and taking on board all the feedback you receive, this will set you up for success and personal satisfaction. Your time at Callywith College is a time of new beginnings and personal growth, so if you are unsure of your aims and ambitions, your lecturers will be there to assist and guide you.

See page 32 for entry requirements



MEET THE STUDENT Q&A

CHLOE from St Austell studies the Health and Social Care Level 3 Extended Diploma. She was previously home educated.

● **What's Callywith like?**

I chose Callywith because they were more supportive around my needs. The college has been really good for me. I have enjoyed the course and have made some great friends. The students are friendly and the staff are helpful.

● **What do you enjoy most about your course?** I love my whole course, the content and the lecturers have been amazing.

● **What are you hoping to do in the future?** In the future, I am hoping to become a Nurse, I am currently looking at university/ apprenticeship routes.

● **What advice would you give future students?** Don't be afraid to ask for help.



LEVEL 3 EXTENDED DIPLOMA HEALTH & SOCIAL CARE

● **Why choose this course?**

This course provides a solid foundation for careers in healthcare, social work, and allied health professions. It integrates theoretical knowledge with real-world applications, preparing students for both higher education and employment. With a growing demand for skilled professionals, this course offers a rewarding path to making a positive impact on people's lives.

● **What will I learn?**

This course will provide you with a broad base and an opportunity to study health and social care issues. You will need to prepare to work hard independently, carry out in-depth research and use a variety of information sources.

You will study modules in anatomy and physiology, scientific techniques, understanding mental wellbeing, public health and will require 100 hours of mandatory work experience. Placement opportunities could consist of a variety of settings, including hospitals, residential homes, dental surgeries, day centres, working with people with additional needs, charities, mental health and housing.

● **Where will it take me?** This course is an ideal pathway for students aiming to progress into a health and social care related degree or higher-level apprenticeship. It is equivalent to three A Levels on completion. BTEC Nationals provide transferable skills that universities value such as the ability to learn independently, research actively and methodically and to give presentations and be active group members.

LEVEL 3 EXTENDED DIPLOMA INFORMATION TECHNOLOGY

● **Why choose this course?**

If you enjoy learning about computers and information technology, then this course will be of great interest to you.

● **What will I learn?**

Covering a diverse set of subjects, you will study modules in IT Systems, Programming, Cyber Security, Website Development, Games Development, Creating Systems to Manage Information, Using Social Media in Business, Data Modelling, The Internet of Things, Digital 2D and 3D Graphics, IT Service Delivery and IT Project Management. By the end of this course, you will be confident in planning, designing and writing computer programs, building websites and developing mobile phone apps. You will understand how to configure and protect an IT system from attack. You will be able to describe the impact that IT systems are having on our world and how businesses are using the latest technologies to gain a competitive edge.

● **Where will it take me?**

You could continue on to computing and IT related degree courses at university, such as Computer Science, Computer Forensics, Game Development, Software Development, Cyber Security, 2D and 3D Graphics, IT Management and Systems Administration and Artificial Intelligence.



LEVEL 3 EXTENDED DIPLOMA PERFORMING & PRODUCTION ARTS

● Why choose this course?

This course will provide you with the knowledge, skills and understanding necessary to progress to degree level study or employment in the performing arts.

● What will I learn?

This course offers a comprehensive exploration of the performing arts industry, with a clear emphasis on developing the craft of acting. Students will build a strong foundation in character development, script analysis, and performance techniques across a range of styles and genres.

Through intensive, hands-on training, learners refine their vocal, physical, and emotional expressiveness to deliver authentic and compelling performances. Alongside stage work, the course also introduces the unique demands of screen acting, equipping students with the skills to adapt their performance for camera. Guided by a dedicated team of experienced practitioners with strong industry backgrounds, the programme supports progression by offering insight into the performing arts business, audition techniques, CV building, and networking opportunities with actors, directors, and technicians actively working in the field.

● Where will it take me?

This course provides a strong foundation for progression into higher education, including degree or diploma courses at universities, drama schools, or specialist institutions. The course also opens pathways into related fields like Media, Journalism, Events Management, or Education.

LEVEL 3 EXTENDED DIPLOMA SPORT

● Why choose this course?

This course includes elements of both theory and practical sport and will allow you to investigate the diversity within sport, health and the leisure industry. The course will particularly suit you if you enjoy learning in a practical environment, but will also stretch you academically.

● What will I learn?

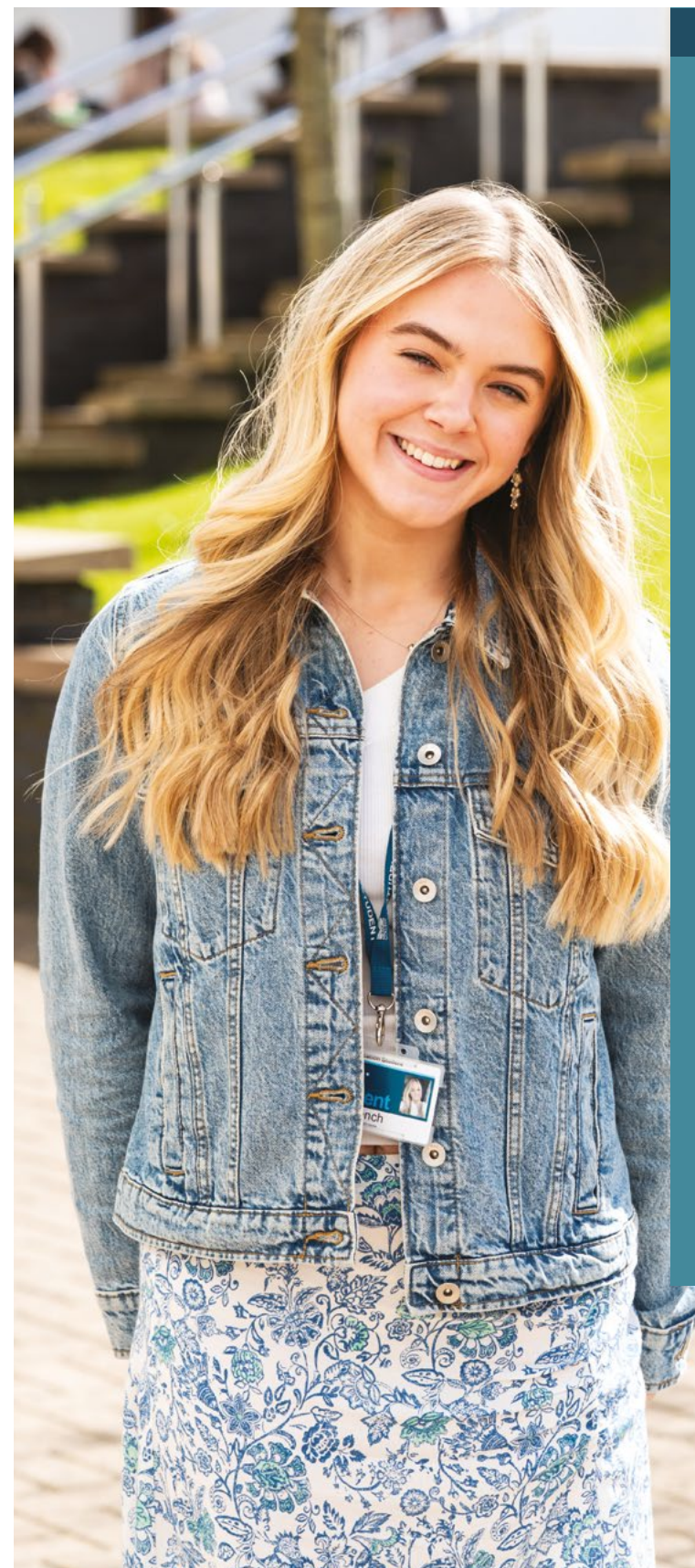
The course will teach you to apply your sporting knowledge, as well as test your practical ability, by covering a range of units including Anatomy and Physiology, Professional Development, Sports Coaching and Leadership, Fitness Testing and Programming, Sports Development and Practical Sports Performance. Classes are taught through classroom lectures, group discussions as well as a variety of practical sessions using the extensive facilities at the college, including a purpose-built sports hall and 3G AstroTurf pitch. There are two externally assessed units in each year marked by the exam board. The remaining units are internally set and assessed by the lecturers. All your work counts towards your final grade profile.

● Where will it take me?

This course prepares you for both employment and progression onto higher education courses. Common career paths include sports coaching, teaching, strength and conditioning coach, sports therapist and personal trainer.

DISCOVER MORE AT AN
OPEN EVENT. SEE THE
INSIDE BACK PAGE FOR
DETAILS.

See page 32 for entry requirements



MEET THE STUDENT

Q&A

LILLIE from St Stephen studies the Level 3 Extended Diploma in Performing and Production Arts. She previously attended Brannel School.

● **Why did you choose Callywith College?** I chose Callywith as I liked the smaller scale/number of students and modern vibe. And I liked what my course entailed and what I would be doing for the next two years.

● **What do you enjoy most about your course?** I love the people and the friends I have made on my course, as well as doing the production at the end of the year.

● **What's Callywith like?** Callywith is a place which has a positive environment with a good work and social life balance. It's a great place to study, and great place to meet new people who are interested in the same things as you.

● **What are you hoping to do in the future?** I would like to go to a Drama School in London and then go on to teach drama.



MEET THE STUDENT Q&A

JACOB from Camelford studies the Level 3 Extended Diploma in Sport. Jacob also attends the High Performance Academy. He previously attended Sir James Smith's School.

● **Why did you choose Callywith College?** I felt Callywith was a safe and secure environment with supportive lecturers. It also makes us as students feel like we are in an adult environment that gives us the opportunity to grow individually as a person.

● **What do you enjoy most about your course?** My course has been perfect, the best few things about it are the lecturers, they are so willing to help people and support us with our learning. They are always so enthusiastic and make sure we can have practical lessons to help us understand the content by physically doing it. Attending the High Performance Academy to work on my strength and conditioning also gives me the best chance to succeed in tennis which I play outside of college at a County/Regional level.

● **What are you hoping to do in the future?** My future plans are to go to Cardiff Met University to study Sports Rehabilitation, sport conditioning and massage.

LEVEL 3 EXTENDED DIPLOMA TRAVEL & TOURISM

● **Why choose this course?**

If you want to work in the world's fastest growing industry, providing over 330 million jobs, then studying Travel and Tourism will help you take off on your journey. You will learn about every aspect of the industry, as well as gain valuable enterprise and employment skills to prepare you for your future.

● **What will I learn?**

The course will give you an insight into the world of travel and tourism including the importance of the UK and global destinations and the transport industry. You will learn about the importance of customer service and develop the skills required to work at an airport check-in desk. You will also learn about visitor attractions and the importance of the UK as a tourist destination. You will develop your understanding and demonstrate key business skills including how to plan for a travel enterprise, market a new travel and tourism product or service, and organise events. Most of the course is assessed internally, however there are two exams in Year 1 of the course. In Year 2 you will also undertake a research project exploring the effect of current trends on the industry.

● **Where will it take me?**

Successful students' progress to higher education, studying International Tourism Management and Events Management or may choose to specialise in more specific areas of Tourism such as Sustainable Tourism Management. Since the course equips learners with a wide range of skills, other students find employment or apprenticeships in hospitality, tourist attractions and a wide range of other businesses.



LEVEL 3 EXTENDED DIPLOMA UNIFORMED PROTECTIVE SERVICES

● **Why choose this course?**

The uniformed protective services sector is diverse and encompasses uniformed public services such as the police service, the fire and rescue service, the armed services, and the prison service. The course has been developed in consultation with academics to ensure that it supports progression to higher education. Employers from the protective services have been involved so that the qualification content is appropriate for those who choose to enter direct employment.

● **What will I learn?**

The course content will help to develop essential skills and knowledge, such as research, presentation, and report-writing. The building of confidence, through understanding and improving ability in outdoor activities, physical fitness, discipline, teamwork, and communication is a core aim. The demonstration that respect and empathy are equally important assets when working with diverse groups is also explored. The course will develop career aspirations, with trips to military bases, fire stations, police stations, universities, multi-day expeditions and various guest speakers from relevant industries. The opportunity to complete Gold Duke of Edinburgh, the National Citizen Service Award and First Aid, to run in conjunction with the course is encouraged.

● **Where will it take me?**

This qualification is recognised by universities as providing the admission requirements for many relevant courses. The course also develops the individual for direct progression into employment.

SEE MORE COURSE
DETAILS ONLINE.



WHY CHOOSE **ACADEMIES** AT CALLYWITH COLLEGE?

- 1 More of what you love. Academies are open to all students and are included in your timetable.
- 2 They encourage development and excellence and can offer additional breadth to your studies.
- 3 The skills you acquire will stay with you as you progress to university, your career and into life as an enriched individual.

ACADEMIES

Please note that academies can only be joined in conjunction with a full-time programme of study.

76



As a full-time student, you could join one of our academies. These have been set up to encourage development and excellence. Whether your interest is sporting, academic or artistic, we have created programmes and support to help you excel.

As part of any academy you can expect to enjoy success during your time at Callywith College, but the skills you acquire will stay with you as you progress to university, a career and into life as an enriched individual. Academy activities are included into your timetable, enabling you to access as much as possible without interfering with your studies.



See more academy details online:
callywith.ac.uk/academies



“ The sports academies are a fantastic opportunity to train and play competitive sport within your college day. Whatever your interest, the academies allow you access to experienced members of staff who can aid your development and support your future goals. ”

Julie Penprase
Sport & Protective Services
Programme Team Leader



ACADEMIC ACADEMY

● Why choose this academy?

Do you enjoy being introduced to new ideas, or want to learn about topics beyond the curriculum? If so, the Academic Academy is for you!

● What can I expect?

The Academic Academy is a programme of lectures and seminars designed to stretch, challenge and provide support for students who want to apply for competitive universities. It is taken alongside your full-time programme and only requires a commitment of one hour a week. The programme is fun and exciting and aims to increase your intellectual curiosity and confidence.

You will be introduced to new ideas and different ways of looking at the world. Lectures are held every Wednesday afternoon. Presentations are given by a combination of college staff and invited external guests. Previous speakers have included a Forensic Clinical Psychologist and a PhD student working at the University of Exeter. Lectures are cross-curricular and cover a range of topics including science, the arts and cultural topics.

The Academic Academy is aimed at students who are excited by new ideas and by the opportunity to be stretched intellectually.

BASKETBALL ACADEMY

● Why choose this academy?

Players of all abilities are welcome in the Basketball Academy where you will be able to train in our sports hall and gym to develop your basketball ability and improve your game related fitness.

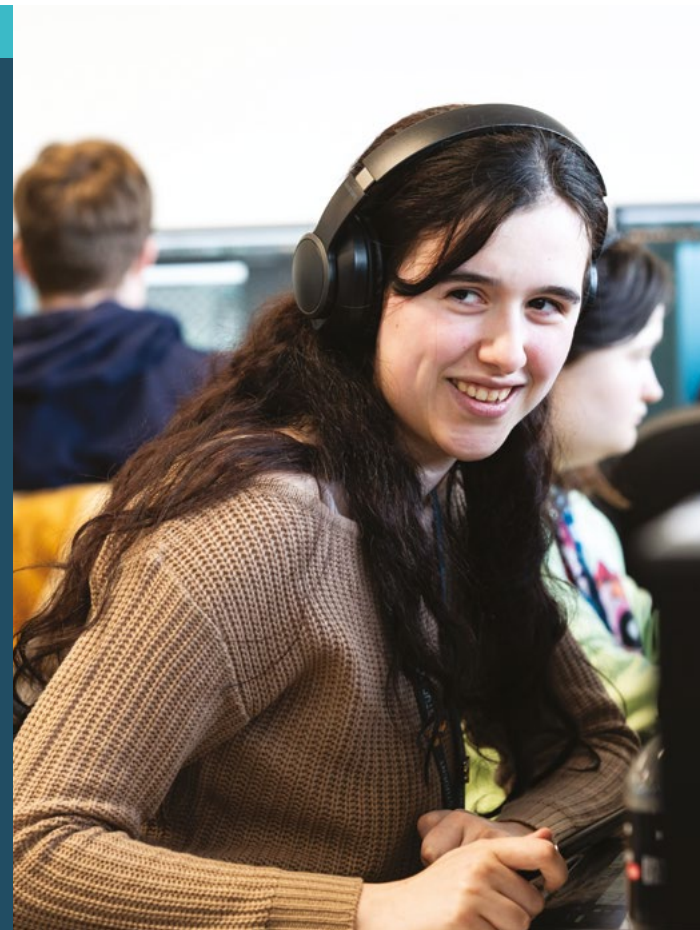
● What can I expect?

Players will have up to two hours a week of basketball related activities, which will include skills work, fitness sessions, match play training, and competitive matches on a Wednesday afternoon.

The college will look to arrange local friendly fixtures and, if available, teams will be entered into leagues, cups and tournaments. Players may also be given the chance to develop leadership, coaching and officiating skills through additional qualifications and experience in local schools and clubs.



CHECK IT OUT. SEE THE STATE-OF-THE-ART CAMPUS AND FANTASTIC FACILITIES THROUGH OUR 360° INTERACTIVE CAMPUS TOURS.



ESPORTS ACADEMY

● Why choose this academy?

Not only is this academy a great opportunity to meet new friends who also share your enjoyment of gaming, you will develop a whole range of valuable soft skills prized by employers including effective teamwork, communication skills, leadership, management, strategy and resilience. Games are played on modern, 4K UHD 31.5 inch monitors and purpose-built gaming computers capable of achieving the highest graphical settings at rock solid framerates.

● What can I expect?

There will be try-outs at the start of the year to decide the teams. Non-playing roles such as team manager, logo design, casting and streaming roles will also be available.

The games played will be confirmed by the national body British Esports Association in September. Previous games have included Overwatch 2, Valorant, League of Legends and Rocket League with more being added each year. Fixtures are weekly against other colleges across the country. The grand finals are held at the Insomnia Gaming Festival at the NEC in Birmingham.

DIGITAL ACADEMY

● Why choose this academy?

If you're passionate about the digital world, then this academy may be for you.

● What can I expect?

Throughout the year, we will provide opportunities for you to work on a variety of projects to enhance your digital skills and develop valuable soft skills. Potential projects include a near space mission, creating a college weather station, interacting with the latest AI models using our dedicated AI computers and creating new computer hardware using a 3D printer.

We're keen to respond to any ideas or ambitions that students may have to develop your computing skills even further. It's your academy and you can help choose its direction.

The intention of this academy is to provide you with ways of developing your digital skills in a fun and practical way. The activities you choose to complete, will give you the opportunity to really challenge and extend your skills in many areas. Completion of projects provides practical experience that can really help you stand out when applying for jobs, apprenticeships, or university.

DISCOVER MORE AT AN OPEN EVENT. SEE THE INSIDE BACK PAGE FOR DETAILS.

FOOTBALL DEVELOPMENT PROGRAMME - MALE

● **Why choose this academy?** The Football Development Programme will provide the opportunity to take part in a comprehensive football programme designed to develop you physically, technically and psychologically.

● **What can I expect?** Players will have up to four hours a week of football-related activities, which will include theory sessions, coaching, fitness sessions, skills work, post-match analysis and competitive matches on Wednesday afternoons. All students will have the opportunity to train on the purpose-built, all weather 3G pitch and compete for a place in one of our four teams. There may also be the opportunity to access recreational football through the HWS programme.

The college expects to enter the first and second team into the Association of Colleges South West league and cup competitions, with the third and fourth team playing in the county participation league, as well as playing in friendly fixtures. There should be over 15 games per season depending on the level of team and success in the cups. Players will also be given the chance to develop leadership, coaching and officiating skills through additional qualifications and experience in local schools and clubs.



FOOTBALL DEVELOPMENT PROGRAMME - FEMALE

● **Why choose this academy?** Players of all abilities are welcome in the Female Football Development Programme where you will be able to develop your football ability and improve your game related fitness.

● **What can I expect?** Players will have up to four hours a week of football related activities, which will include skills work, fitness sessions, match play training, and competitive matches on a Wednesday afternoon.

The college will look to arrange local friendly fixtures and, if numbers allow, a team will be entered into the AOC league, cup and tournaments. Players may also be given the chance to develop leadership, coaching and officiating skills through additional qualifications and experience in local schools and clubs. There are possibilities of progressing onto Apprenticeships in football coaching and scholarships to universities in the USA.

SEE MORE COURSE
DETAILS ONLINE.



HIGH PERFORMANCE ACADEMY

● **Why choose this Academy?** The High Performance Academy offers specialist training and support to exceptional athletes who compete as individuals within their sporting arena.

● **What can I expect?** This academy will complement existing training taking place within a club or squad setting, by helping to develop an athlete's functional movement skills, strength and conditioning, to help create the 'whole' athlete.

This academy will focus on providing the opportunity to access outstanding functional movement advice, focusing on sport specific based biomechanics, whilst delivering expert strength and conditioning programmes to help athletes reach their potential. The academy will also offer support to athletes who may be in the process of recovering from injury by carrying out rehabilitation and recovery programmes.

HOCKEY ACADEMY

● **Why choose this academy?** Players of all abilities are welcome to attend the male/female Hockey Academy where you will be able to develop your hockey ability and improve your game related fitness.

● **What can I expect?** Players will have one training session on the astro at Bodmin Leisure Centre, transport will be provided. There will be opportunity for indoor and outdoor competitive and friendly matches/tournaments throughout the year.

Players will also be given the chance to develop leadership, coaching and officiating skills through additional qualifications and experience in local schools and clubs.

LAW ACADEMY

● **Why choose this academy?** If you have an interest in pursuing a career in the legal profession, or are simply fascinated by how the law operates within society, then this is a great opportunity to explore your interest further. And if you'd like the opportunity to flex your legal knowledge in a real courtroom then this is the academy for you!

● **What can I expect?** Expect a mixture of discussion and debate, videos, teamwork activities, guest speakers and trips to explore the world of Law from a range of angles. You will have the opportunity to take part in the Bar Mock Trial Competition working as part of a team to prepare roles for mock court cases and competing against other teams in the region. This is an exciting and challenging way to gain an insight into how the legal justice system works and meet judges and barristers.

Additionally, there will be opportunities to learn about career routes through guest speakers and visits (e.g. local courtrooms and police headquarters). Other sessions will focus on the reasons why people offend and the success (or otherwise) of post-conviction rehabilitation, the legal processes we use to catch offenders (forensics, eyewitness evidence and interview techniques) and consideration of human rights in the UK and across the world.

APPLY NOW
FIND OUT HOW ON
PAGE 98.

MEET THE TEAM Q&A

LUCY MACDONALD MEDICS' ACADEMY COORDINATOR & BIOLOGY LECTURER



Lucy, who after graduating from vet school, decided to study her PGCE with Truro College, has been working at Callywith College for four years as Medics' Academy Coordinator and Biology Lecturer.

● **What inspired you to pursue a career in education?** I studied the International Baccalaureate when I was 16. The support I received during this crucial stage of my education had such a direct impact on my prospects and my route into veterinary. Being a recent university graduate, I felt my knowledge and experience were beneficial to current 16-18 year olds, and I knew the support they needed in order to achieve their goals.

● **What does your role involve?** I work directly with students to ensure they have the knowledge to achieve the qualifications they need for their progression. My role doesn't simply include delivering subject content, but supporting and inspiring students, particularly those enrolled on the Medics' Academy. These students are applying for highly competitive courses, Medics' Academy allows me to coach and prepare them for the challenge of applying to medicine, veterinary and dentistry, as well as other healthcare roles.

● **What about working at Callywith College do you enjoy the most?** I love working at Callywith - it is such a happy environment to be in for both staff and students.

● **What one thing about you might surprise people?** My whole life I worked towards getting into vet school and working in the animal field, my career change definitely surprised people (and myself), but I wouldn't look back. Veterinary is still my passion, but inspiring and supporting others is equally as important to me.

● **What advice would you give students considering applying for Science courses at Callywith?** Sciences are tough - you must be determined to work hard to be successful and achieve your goals.

MEDICS' ACADEMY

● **Why choose this academy?** If you are considering a career in a competitive health care role such as medicine, veterinary science or dentistry, then the Medics Academy is for you.

Making a successful application to the highly competitive university courses that lead to these professions is a long and potentially difficult process. In addition to the large range of destination choices, there are a whole range of entrance tests, work experience requirements and application scoring systems that need to be understood. While it is possible to succeed without the academy, learning to understand the system will really help. The Medics' Academy is taken in addition to our A Levels and will support students to build the necessary skills and experience to succeed. It is a fun and interactive programme that is designed to confirm your interest in these challenging careers and inspire you to achieve your goals.

● **What can I expect?** Medics' Academy sessions will take place on Wednesday afternoons and will predominantly be delivered at Callywith College, although some sessions may take place off-site. Sessions involve guest lectures, practical workshops and tutorials that enhance students' knowledge of the health care professions. Sessions also support students with the application process and interview preparation. The programme utilises links with Exeter Medical School, the RCHT, local GPs and other health care professionals.



NETBALL ACADEMY

● **Why choose this academy?** Players of all abilities are welcome in the Netball Academy where you will be able to play fixtures and train in our sports hall and fitness suite.

● **What can I expect?** Players will have up to four hours a week of netball-related activities, which will include skills work, fitness sessions, match play training, post-match analysis and competitive matches on a Wednesday afternoon. The college expects to enter the first team into the Association of Colleges South West league and cup competitions, with the second and third team playing in the county participation leagues, cups and tournaments, as well as playing in friendly fixtures.

There should be over 15 games per season depending on the level of team and success in the cups. Players will also be given the chance to develop leadership, coaching and officiating skills through additional qualifications and experience in local schools and clubs. There may also be the opportunity to play recreational netball through the HWS programme.

RUGBY ACADEMY - MALE

● **Why choose this academy?** The Rugby Academy caters for a range of abilities, providing the opportunity to play in all formats of the game including touch, 7's, 10's and 15 a side.

● **What can I expect?** Players will have up to four hours per week of rugby related activities, which will include coaching sessions, video analysis, fitness sessions, weight training and competitive matches on a Wednesday afternoon. The college expects to enter the Association of Colleges South West league and cup competitions, as well as local county and regional tournaments and friendly fixtures.

There may also be the opportunity to travel further afield to national competitions like the National Schools 7's at Rosslyn Park. Players will also be given the chance to develop leadership, coaching and officiating skills through additional qualifications and experience in local schools and clubs.

RUGBY ACADEMY - FEMALE

● **Why choose this academy?** Players of all abilities are welcome in the Female Rugby Academy where you will be able to develop your rugby ability and improve your game related fitness.

● **What can I expect?** Players will have up to four hours a week of rugby related activities, which will include skills work, fitness sessions, match play training, and competitive matches on a Wednesday afternoon. As women's rugby is a developing sport, the college academy programme is dependent on the numbers recruited each year, so if you love rugby, join with your friends.

When numbers allow, the college will enter the Association of Colleges Sport League and cups as well as festivals, friendly matches and tournaments at 15s, 10s and 7s. Players will also join other colleges across the South West to train and play a number of barbarian style festivals and fixtures. Players are also given the opportunity to represent the college at a South West Colleges level and are encouraged to play in the county and regional set up within the Rugby Football Union.



GET CONNECTED.
SEE MORE OF COLLEGE
LIFE ON SOCIAL.



THE LOW DOWN

INFORMATION FOR NEW STUDENTS
AND PARENTS

84

STUDENT LIFE & OPPORTUNITIES

Enrichment Opportunities

In addition to your course and as part of your timetable, you can choose from a range of enrichment opportunities offered throughout the week. As well as adding to your CV or university application, these can give you a break from your studies and enable you to meet people from other courses.

You can follow an activity that complements your existing study or use it to discover something entirely new. There are many activities you can choose from including the Extended Project Qualification (EPQ), Lingua Lounge, Creative Writing, Sustainability and Music groups, Dungeons and Dragons, multiple support groups, plus the opportunity to gain work experience. If we don't offer an activity that interests you, let us know and we'll see if we can add it to the programme. Find out more about our enrichment opportunities on page 12.

Industry Immersion

All first-year students will be required to arrange and complete a week's Industry Immersion placement at the end of the summer term. The aim is for you to test out a career idea. The process is supported by your Personal Development Tutor and the Destinations Team.

Callywith Active

Callywith College is committed to providing an environment where students can grow and develop by offering a wide range of free physical activities across the college through our Callywith Active student programme. The menu of activities which fit around student timetables, include gym and fitness sessions, badminton, table tennis and astro pitch activities.

The gym sessions take place in Fox Gym, where students can come and exercise following their own plan, or our Callywith Active Lead is available at all gym sessions to offer guidance and advice on planning a training session.

The menu of opportunities is fully inclusive and has been established for all students to access regardless of their ability, previous experiences and goals. The programme is provided to support positive mental health and wellbeing, and to help create healthy active lifestyles.

Mindfulness Trail

Our Mindfulness & Outdoor Exercise Trail is designed to create a safe journey through nature to help students to become more active, relax and unwind.

The trail, which winds around the college's 3G Astro pitch and will eventually lead to our nature reserve, allows students to immerse themselves in the beautiful surroundings we have here at the college, providing a getaway from the main campus.



The Mindfulness Trail also features a variety of outdoor fitness equipment funded by Sport England's 'Queen's Platinum Jubilee Activity Fund' to help develop physical activity opportunities at the college.

The Duke of Edinburgh's Award

The Duke of Edinburgh's Award is universally recognised as one of, if not the best, programme for the personal development of young people. If you participate in the award you will experience an enjoyable, challenging and rewarding programme of personal development. Taking part builds confidence and develops self-esteem. It requires persistence, commitment and will have a lasting impact on your attitudes and outlook. On the DofE programme you will complete different types of activities to achieve an award e.g. volunteering, physical, skills, expedition and residential.



Ten Tors

Ten Tors takes place every year on Dartmoor. All those who attempt Ten Tors will undoubtedly remember it for the rest of their lives and for many it will be a life-changing experience. We will train you during the course of the year to allow you to take part in the Ten Tors 45 Mile challenge in May. Its tough, and it will push you mentally and physically - you will learn so much about yourself!

Campus Life

As you can see, there are many chances for you to thrive, explore, develop and learn, but some days you may just like to enjoy campus life, meet your friends and relax in one of the cafés and outdoor areas around the campus.

Academies

As a full-time student you could join one of our academies. These have been set up to encourage development and excellence in a wide range of sports as well as academic study and for those interested in the medical profession. Academy activities are included in your timetable enabling you to access as much as possible without interfering with your studies. Find out more on page 76.

Creative Arts

If you have an interest in the creative arts you may be able to contribute to one of the many performances or exhibitions throughout the year, both at college and outside venues.

Fundraising

You may want to take part in some fundraising activities while at the college. You and your friends can select charities to support, for example Shelterbox, CLIC, Lamin Appeal, Heart Foundation, Breast Cancer Care, Cancer Relief, Comic Relief and Children in Need.

Fancy dress, raffles and cake sales are just some of the activities you could be involved with in order to raise funds as well as the more formalised events such as Ten Tors, fun runs and marathons.

Geography students can take part in the annual visit to Eswatini for the Shewula Orphan Project, run in association with Truro and Penwith College. The Shewula Project is committed to building schools and providing education for AIDS orphans. All the money raised goes directly to support the orphans and it is the students themselves who decide which aspect of the project the money is used on.

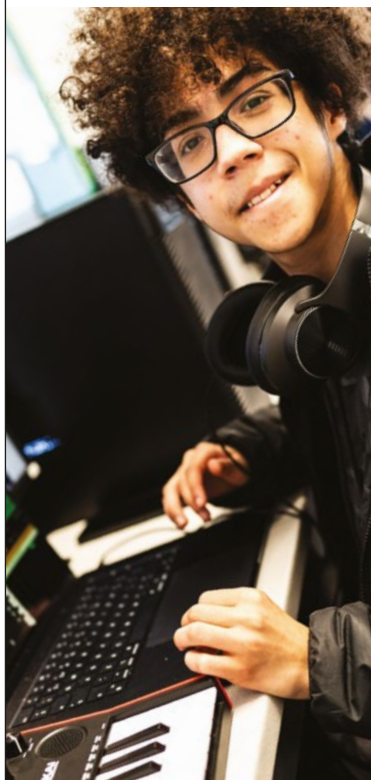
You will spend days in the orphan schools playing with the children and assisting in classrooms. In addition, the trip affords various stops to view the beautiful landscape and cultural sights of Eswatini.

Travel Opportunities

Travel opportunities exist either as part of your studies or for enrichment, with many offered in association with Truro and Penwith College. Our students have been far and wide with destinations including Toronto, London, Eswatini, Spain, Germany, Italy and Iceland. There are also language exchange opportunities and local field trips.

Student Voice

Student Voice is of great importance to us. It helps to shape the college by feeding back the student perspective of life at Callywith. At Callywith College, Student Voice is captured in a range of ways including: An Autumn Survey for Year 1 students, annual 'Course and Tutorial Evaluation Surveys' for all students, face-to-face termly group sessions with the Programme Team Leader for each curriculum area, face-to-face termly group sessions with the Assistant Principal for Student Experience and via the Student Executive.



Student Executive and Student Ambassadors

Student Executive Member and Student Ambassador roles are ways in which you can be involved in the day-to-day operations of Callywith College.

The roles will enable you to develop fantastic employability and transferable skills for your CV and next steps, whether that be university, apprenticeships or employment. They will also help you grow in confidence and meet new people.

As a member of the Student Executive, you would:

- Run various student forums throughout the year where you collate student feedback on life at Callywith and gather new ideas.
- Be available to meet students in the 'student executive weekly lunch time drop-ins' in Student Services/reception areas in college. Hear students' thoughts on any concerns about college, and opportunities they would like to see available.
- Work closely with the Assistant Principal for Student Experience on a range of cross college activities, fundraising opportunities and events promotion. This could include social media content creation.
- Contribute to the creation of new initiatives to improve college life.
- Help new students settle into college life.
- Attend half-termly meetings with the Assistant Principal for Student Experience.

As a member of the Student Executive, you will automatically be a Student Ambassador too.

As a Student Ambassador, you can volunteer at college open events to welcome prospective students and their families/carers to Callywith and help new students settle into college life.

THE COLLEGE CAMPUS & RESOURCES

The College Campus

Callywith College is a state-of-the-art, purpose-built campus designed to enhance your studies and give you the best possible learning experience. There are numerous subject-relevant labs, classrooms, art studios, IT facilities and a lecture theatre and drama studio, to provide the standard of education you would expect from one of the top colleges in the country.

Our excellent facilities support a varied programme of performances, workshops and external classes across the college as a whole, which you will be able to access as part of your studies.

We have outstanding sports facilities that you can access during the day including a well-equipped gym and sports hall for a range of sports and our dual use football and rugby 3G AstroTurf pitch will no doubt play host to many of your outdoor sporting achievements.

Through our Learning Centres and IT suites, you will have access to a comprehensive range of contemporary books, journals, audio-visual and online materials that will provide inspiration for studying and improve your results.

Learning and leisure are blended successfully. There are refectories and social spaces across the campus to enable you to enjoy your time outside of taught classes.

Access

The buildings and facilities at Callywith College are accessible to all students. All parts of the college may be accessed by people with limited mobility and within the college there are lifts designated for their use.

Refreshments

Callywith College has dedicated eating areas in the Temple and Garrow buildings where a wide variety of reasonably priced hot meals, sandwiches, drinks and snacks are all available. Details of opening times and menus can be found on the Intranet. The college operates a cashless catering system or you can use contactless via a phone or credit/debit card.



Learning Centres (Libraries & IT Suites)

The college has three Learning Centres across the campus. These are areas where traditional printed resources sit alongside our expanding electronic provision.

The open-access computers in each IT suite offer a wide range of software and there are staff available to support your use of the facilities.

Necessary books are provided by the college and must be returned in good condition. Students are asked to pay an enrolment fee. The Learning Centres hold relevant collections of books, and journals and there is increasing electronic access to books, as well as online journals and databases via the College Intranet Virtual Learning Centre.

Information Technology

The college has a large number of computers capable of using an extensive range of software, available for students to use on a drop-in basis.

Students are expected to improve their awareness of, and skills in, information technology (IT). There are college IT champions who can advise you in your use of IT. The college has campus-wide Wi-Fi, which enables students to access the Internet and complete college work using their own devices. You will also have access to Office 365 accounts to allow learning to take place from anywhere in the world.

College Shop

Many of the materials needed by our Art students are available at very competitive prices through the Online College Shop, which also sells standard stationery items like folders and pens etc.

SUPPORT SERVICES

Support given is wide ranging and any problems experienced by students during their course, either personal or academic, will be addressed as quickly as possible.

GCSEs

All students yet to achieve GCSE Grade 4 or above in English or Maths will have to study GCSE English or Maths as part of their programme of study at college. In many cases, progression opportunities will be dependent on achievement of English and Maths.

Academic Services

At Callywith College, we offer a comprehensive support service to help students achieve their academic goals. Our Learning Resource Centres (LRCs) are a friendly and open environment that enable students to study at a pace and style of their choosing. Garrow Library (G114) is where you will find course textbooks as well as supplementary texts to enrich your learning. Garrow Library is a silent study area, we ask that voices are always kept to a minimum to allow those around you to study in peace.

Temple (T205) and Garrow (G101) LRCs are quiet study areas, we ask that voices are kept low, and we welcome collaborative work. To facilitate this, we have a comprehensive reference section, we ask that the books are not removed from this room to enable other students to benefit from the resources.

Special Educational Needs & Disabilities (SEND)

We can offer one-to-one support for identified high needs students, small group support, learning needs assessment on referral from lecturing staff and liaison with outside agencies. Appropriate provision is put in place for young people with Education, Health, and Care Plans (EHCPs) and that information is shared with lecturing staff so that they are able to cater for your requirements, helping you to effectively access your learning and enable you to achieve your very best.

Trauma Informed School

We are proud to be the first and only post-16 provider in the country to be formally awarded TIS 'trauma informed school' status and recognised as a 'trauma informed mentally healthy school', following a comprehensive external assessment of our provision completed by Trauma Informed Schools UK in October 2023.



We recognise the links between academic achievement, personal development and wellbeing, and how barriers out of our control can impact on these things. This means we take a relational and holistic approach in how we support students across the college.

All staff at Callywith have been trained in the trauma-informed school (TIS) approach. The college's student support team are all TIS mental health practitioners, and the Assistant Principal for Student Experience Jen Temple is the college Senior Mental Health Lead.

Personal Development Tutor

All students are allocated a Personal Development Tutor (PDT). The role of the PDT is to have oversight of the student journey. Your PDT will meet with you every week and deliver the personal development curriculum, as well as ensuring you stay on track by monitoring your wellbeing, attendance and progress. They will be your first point of contact for any questions you may have. Find out more on page 16.

Student Services

The Student Services team is here to support you with a wide range of non-academic issues, no matter how big or small. You can drop in anytime to speak with someone in person or connect online by scanning the QR codes around campus. Our team is trained in trauma-informed and holistic approaches, recognising the vital connection between academic success, personal growth, and overall well-being. We offer confidential one-to-one support, peer support groups, and drop-in clinics with specialist agencies such as the Police, YZUP, Early Help, and Young People Cornwall. Services include help with mental health, bereavement, sexual health, money, housing, identity, young carers, drugs & alcohol, personal safety, relationships and more. We even have our own therapy dog, Macy, available for some extra comfort.



For more information, please email studentservices@callywith.ac.uk, call 01208 224460, speak to us online by scanning the QR codes across campus. You can also visit callywith.ac.uk/student-services

Parents/carers and professionals can also request support on your behalf by contacting us directly or completing our referral form.

Careers Guidance

We know that making decisions about your future can be a bit daunting. That's why we are committed to helping and guiding you through those all-important choices about what to do next. All students can book a meeting with a L6 qualified adviser to discuss their personal progression routes and receive support in making rational informed decisions. Advisers can help with searching for and evaluating university courses and apprenticeship opportunities, labour market information, CV and cover letter writing, researching and applying for jobs, mock interviews and more.

A range of careers' resources including guidance, templates and software are available to all students via the college's SharePoint and through our personal development programme.

There are also a range of careers related trips and events over the year which you can access. These include Destinations Day, when you can choose from over 60 specialist careers talks and a range of different sector networking lunches. There are also visits to universities, the National Apprenticeship Show, a Higher Education Fair, as well as more subject specific visits, guest speakers and other careers activities. To find out more, please visit callywith.ac.uk/careers or email careers@callywith.ac.uk

Mental Health, Welfare & Counselling Support

We recognise the link between emotional wellbeing and achievement; therefore, we have our own on-site counselling service and Mental Health Advisor and work closely with external mental health agencies, such as CAMHS, when required. Mental health and emotional wellbeing are also key topics within our tutorial curriculum, designed to raise awareness and promote our positive mental health culture. Additionally, students can also talk to a member of the safeguarding team or their Personal Development Tutor.

Callywith College Bursary Fund

Financial support may be available for eligible students to help with essential costs such as meals, transport, and course materials. Applications are assessed individually based on household income and personal circumstances. Please visit callywith.ac.uk/transport for further information.

Attendance Advice

Advice is given by Personal Development Tutors on procedures to keep your attendance record accurate and up-to-date.

Absences should be reported via the Parent / College Portal (callywith.ac.uk/portal) on our website. Here you can also view attendance and timetables.

EQUALITY & SAFEGUARDING

At Callywith College, we recognise our duty to ensure arrangements are in place for safeguarding and promoting the welfare of young people and we carry out this duty through our teaching and learning, pastoral care and extended activities.

Equality of Opportunity

Callywith College is committed to meeting its duties contained in the Equality Act 2010. We aim to create a culture of inclusiveness and to challenge discrimination, taking positive action in order to remove barriers to the educational and personal progression of individual learners. To achieve this aim, the college will not tolerate unfair or unlawful discrimination.

The college will seek to remove any existing barriers to all staff, students, trustees and visitors, irrespective of age, disability, gender reassignment, marriage or civil partnerships, pregnancy and maternity, race, religion or belief, sex and sexual orientation.

Callywith College endeavours to promote an inclusive working and learning environment, which

supports the individuals within its community irrespective of their background. The college aims to promote equality of opportunity by providing full and equal access to all students who can benefit from its provision, and by encouraging and enabling all members of the college to build and contribute to a society that values cultural and social diversity. A focus on learner voice and involvement in instigating change reflects this commitment.

The college achieved the Investors for Diversity in Schools Award in March 2023 and was recredited in April 2025. This demonstrates the college's commitment to an all-encompassing approach to equality, diversity and inclusion.

Learning Difficulties & Disabilities

The college welcomes applications from students with learning difficulties and disabilities. Learning support and specialist equipment are provided as required.

Safeguarding Children, Young People & Vulnerable Adults

The college is committed to safeguarding and promoting the welfare of children, young people and vulnerable adults and expects all staff and volunteers to share this commitment. This means that we have a child protection and safeguarding policy and appropriate procedures in place. All staff, including visitors, volunteers and governors, must ensure that they are aware of these procedures.

Sometimes we may need to share information and work in partnership with other agencies, for example when there are concerns about a child's, young person's or vulnerable adult's welfare. We will always ensure that our concerns are discussed with parents/carers/ next of kin first, unless we have reason to believe that such a move would be contrary to the child's, young person's or vulnerable adult's welfare.

If students are concerned about their, or the safety of someone else, they can speak to the college's Designated Safeguarding Lead Jen Temple, Deputy Designated Safeguarding Lead Jamie Crowle or a member of the safeguarding team by emailing safeguarding@callywith.ac.uk

Operation Encompass

We are proud members of Operation Encompass, a joint project between local schools, colleges and Devon and Cornwall Police. Operation Encompass is the reporting to schools and colleges, prior to the start of the next college day, when a child or young person has been exposed to, or involved in, any domestic incident.

Operation Encompass will ensure that a member of staff, known as a Key Adult, is trained to allow them to liaise with the police and to use the information that has been shared, in confidence, while ensuring that the college is able to make provisions for possible difficulties experienced by young people, or their families.



COLLEGE POLICIES & PROCEDURES

Your Application

Before you become a student at Callywith College, we aim to provide you with information about the courses we offer and the practicalities of being a student here. We will let you know about transport, finance, equipment and progression. If you have any additional needs, we will give you details of the individually tailored support you can expect at Callywith College.

The official deadline for applications is always the last day of the February half term holiday in the spring term. Given that the college may have courses which become oversubscribed, applicants are advised to apply as early as possible. If applicants miss the official application deadline, we would still encourage them to apply as there may still be remaining availability for some courses.

Once you apply, you can expect us to process your application fairly and efficiently and, normally within four weeks of receipt of your application form, provide you with a date and time for an interview.

The interview is a good opportunity for both you and the college to ensure you are choosing a course that is right for you and you have all the information you need. After your interview, a decision about a place at Callywith College can usually be made.

Student Life

Callywith College has very few rules, but both you as a student and all college staff work to ensure everyone has the most positive and beneficial experience possible.

When you start as a Callywith College student, we will give you a thorough induction. You will receive a lot of new information including details on learning resources, dates, security, health and safety, safeguarding, attendance, assignments and college rules, procedures and policies. You will also be provided with this information by email, which will give you a record of all the information for you to refer back to.

As a student at Callywith College, you will accept more responsibility for your work and your progress than during your time at school. Many courses require you to work extensively on your own in college and at home. First-class study facilities are available in the college and successful students use these effectively.

We will help you to organise your work, but you will be responsible for ensuring that you meet deadlines. The college requires that you attend regularly and punctually, and that you meet the demands of your course. We hope that you will enjoy your time at Callywith College and the staff at the college will work with you to help you achieve success.

Code of Conduct

At Callywith College our college values of compassion, resilience, respect and success are embedded in all that we do. They represent the vision, mission and culture of the college. The Student Code of Conduct reflects these values, and will be made explicit to students as part of their college induction.

College Day

The college day for full-time students will usually last from 9.15am to 4.25pm. Students will have more private study time than is the case with pupils in school.

Drugs, Alcohol & Smoking Policy

Callywith College does not condone the use of drugs or alcohol. We seek to educate students about drugs and alcohol-related issues and provide help to those who ask for it. The college has a no smoking or vaping policy.

Data Protection Act

Any information that you provide during the application process is protected under GDPR 2018.

Fees

If you are aged 16 to 18 years and a student under the age of 19 on 31 August, you will not normally be charged fees for tuition. Overseas students will be liable for fees and details will be available from the college. Students are required to pay a £35 non-refundable enrolment fee via the College Online Shop. The enrolment fee entitles students to a student ID card and lanyard (and one free card re-print), £10 printer credit, borrowing books from our onsite library, including course books and a locker.

Examination Fees

Full-time students who do not pay tuition fees would not normally be asked to pay for examinations that are taken as part of the course, with the college's approval. Students who pay tuition fees will need to pay.

FAQ

YOUR QUESTIONS ANSWERED

My school has a sixth form, do I have to stay there? Although you now have to stay in full-time education until the end of the academic year in which you turn 18, it's your choice where you want to study.

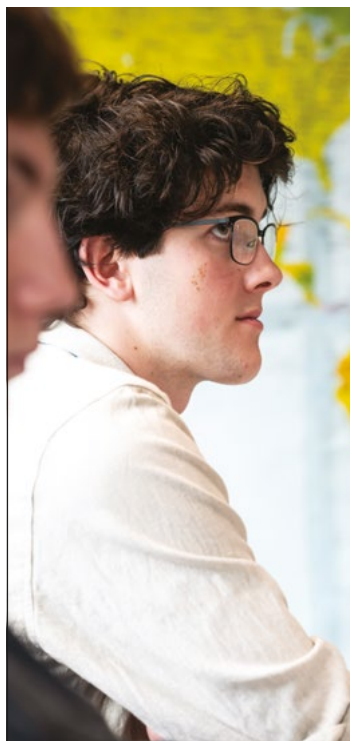
Why should I choose Callywith College? There are many reasons why Callywith College is a great place to study after you have finished school. With state-of-the-art facilities and resources, a diverse range of courses and enrichment activities, exceptional teaching and student support and a track record of student achievement, Ofsted Outstanding Callywith College is your stepping-stone to a bright future. See our 'Why choose us' section at the beginning of this prospectus for more information.

Can I have a look around the college? Callywith College run a number of Open Events throughout the year. You can hear from staff, view the fantastic facilities and find out about your life as a student. See the inside back page for full details.

I can't decide what type of course to take; what might help me choose? The 'What to Choose' section gives details about the types of courses we offer and what they entail. There is a wide range of A Levels and vocational courses to choose from, so there is bound to be something to suit you here.

Do courses have entry requirements? Yes, all courses do. Please refer to the 'What to choose' section and course information on our website (callywith.ac.uk) for details of what grades you need to start your chosen course.

Can I go to university if I don't take A Levels? Vocational courses provide a proven route to university providing the subjects are compatible. College Open Events are a great opportunity for you to find out whether the course you want to follow is suitable for applying to university, as is your interview.



How do I apply for a course? The applications process is covered in the 'How to Apply' section inside the back page of this prospectus. Firstly, you will need to complete an online application form at callywith.ac.uk/how-to-apply.

Can I just enrol in an academy? No. Academies are offered only in conjunction with a full-time programme of study. They are intended as a supplement for, and not an alternative to, the qualifications the college runs.

When can I apply and when will my interview take place? You can send in your application from October onwards. Once your application has been checked by our admissions team, you will receive an email confirming your interview date and time with your specialist interviewer. Confirmation of your selected appointment will be sent to you by email, and can be checked via the online portal on our website.

Is there a deadline for applications?

The official deadline for applications is always the last day of the February half term holiday in the spring term. Given that the college may have courses which become oversubscribed, applicants are advised to apply as early as possible. If applicants miss the official application deadline, we would still encourage them to apply as there may still be remaining availability for some courses.

What questions will I be asked at my interview? Your interview is not a test, it's more of an informal chat that provides a chance for you to discuss your plans for your future, both in and beyond education. You will be asked what course[s] you are planning on studying and why, about your career aspirations, as well as your personal interests and hobbies.

Your course choices will then be looked at in relation to your own aspirations to ensure that the two match up well. You will also be asked about any learning support you may require when starting college.



What if I don't get the GCSE grades I was expecting?

If you don't achieve the GCSE results provided in your offer, don't panic. Please ensure you enter your results into the online portal on our website ASAP. This will then notify us that we need to contact you to discuss whether pursuing your selected course is the right choice for you, or if another course might suit you better in light of your recent results. A member of staff will call you or you may be invited into the college.

How will I get to college?

Callywith College has partnered with Stagecoach to provide a bespoke bus service that brings students to and from the college at the beginning and end of the day, and to a number of major Cornish towns on a midday service. Subsidised travel is available for all our students, with additional bursaries available to students from low income families. Details of the bus timetables, and the financial support available can be found at callywith.ac.uk/transport

What are Enrichment Opportunities?

Enrichment opportunities are an opportunity to further your current interests, or develop new ones. Options on offer can assist you in gaining further qualifications such as the Duke of Edinburgh's Award or the Extended Project Qualification (EPQ), or they can simply be a way for you to enjoy your hobbies. Further information can be found in 'The Low-down' and 'Enrichment for all' section of this prospectus.

How can parents/carers get involved in running the college?

The college has two Parent Trustees ensuring the views of parents/carers is a key consideration for the college. Parents/carers will also be invited in to the college in September to meet key staff and ensure their full involvement throughout their child's time at the college.





For most students, travelling to college by bus is a great option. It's an environmentally friendly and reliable way to get here. Many students come from all over Cornwall and so some journeys will take longer than you are used to - use this time to relax, study, or make friends. Wherever you're coming from, your journey to Callywith College is the road to an inspiring future.

BUSES

The Callywith College bus pass provides travel on your nominated route into and out of college at the beginning and end of the day, and now to a number of major Cornish towns at midday. The bus network is provided by Stagecoach.

All bus travel is subsidised by the college for all students. However, students from households with an income of less than £50,000 are eligible for additional discounts.

Bursaries are dependent on a minimum of 90% attendance during the previous term, as recorded on the college's MIS database.

Details of our college services, timetables and the financial support available can be found at callywith.ac.uk/transport.



Callywith College is working in partnership with Stagecoach and RideTandem to deliver a reliable and user-friendly transport service from September 2025.

RideTandem will provide a custom ticketing app designed specifically for Callywith students. To purchase your bus pass and learn more about travel options, simply download the RideTandem app from the Google Play Store or Apple App Store.



Please note that the 2025-26 bus routes and map are subject to change. For the latest information, please visit callywith.ac.uk/transport

SUSTAINABLE TRAVEL

CALLYWITH COLLEGE IS WORKING IN PARTNERSHIP WITH CORNWALL COUNCIL AND SUSTRANS THE UK'S SUSTAINABLE TRANSPORT CHARITY [SUSTRANS.ORG.UK](https://sustrans.org.uk) TO PROMOTE ACTIVE, SUSTAINABLE TRAVEL TO COLLEGE AND TO REDUCE CONGESTION.

Choosing to travel on foot or by bicycle reduces air pollution and traffic congestion, while saving you money and keeping you fit. Using public transport also helps reduce your carbon footprint, so check out your travel options below and play your part in making Bodmin a better place to study.



Walking & Cycling to college

Walking or cycling is a simple, environmentally friendly and free way to fit exercise into your day. Recent improvements in Bodmin have made it easier to travel in these ways. A shared-use footway/ cycle path connects the college to the town centre along Launceston Road and Priory Road. The town centre is only a 10-15 minute walk or cycle away, so why not beat the traffic and give it a try? This route can be found in the Bodmin active travel map - download the map at cornwall.gov.uk/activetravel

There is covered cycle storage at the campus and showers/changing facilities and a bike work station are available (shown on the cycle facilities map available on the college website).

Dedicated traffic-free routes serving the town's colleges are marked on the Bodmin active travel map cornwall.gov.uk/activetravel. Other traffic-free connections to college include the Camel trail from Padstow, Wadebridge and St Breward. Details of the cycle routes and trails that cross the county are available at cornwall.gov.uk/environment/countryside/cycle-routes-and-trails and sustrans.org.uk/national-cycle-network



Buses

Buses are a great, environmentally friendly way to get to college especially with the launch of the first electric buses being introduced into Cornwall in summer 2025. The college is pleased to announce a new partnership with Stagecoach for 2025/26 who will provide a bespoke bus service for our students. Please refer to the previous pages for details.

Trains

Frequent trains serve Bodmin Parkway station with connecting buses to Bodmin. Alternatively, why not bring your bike on the train and use the cycle routes between the station and the college (approximately 25 minutes' ride)? You'll need to make a booking for your bike if it's a high-speed train, non-bookable bike spaces are available on local trains.

Driving to college

Callywith College promotes the use of sustainable travel to get to your place of study. However, we recognise the fact that sometimes car travel is unavoidable. Carshare Cornwall provides a free service for passengers and drivers to link up and share car journeys.

Click on the 'cost calculator' oncarsharecornwall.com to work out how much you could save.

Students parking at Callywith College will need a Parking Permit which can be applied for at callywith.ac.uk/transport. To apply for a permit, students will need to provide copies of their driver's licence and insurance and are issued on a case-by-case basis. Parking Permit fees will be released over the summer break.



Image courtesy of J Blewley/Sustrans

HOW TO APPLY

Callywith College is striving to be a completely inclusive and diverse college and we welcome all applications in order to ensure under-represented groups are fully represented in both our student and staff population.



HAVE A THINK & DO YOUR RESEARCH

What subjects are your favourites, which do you enjoy the most? What is your dream career and what subjects or courses will help you get there?



ATTEND A CALLYWITH COLLEGE OPEN EVENT

Our Open Events are a great way to hear from teaching staff, see our fantastic facilities, find out about the subjects you are interested in and discover new options. Visit callywith.ac.uk/open-events to find out more and register.



COMPLETE YOUR APPLICATION ON OUR WEBSITE

Apply online at callywith.ac.uk/how-to-apply. The official deadline for applications is the last day of the February half term holiday, although we would still encourage you to apply after the deadline. Given that the college may have courses which become oversubscribed, applicants are advised to apply as early as possible.



ATTEND A SHORT INTERVIEW

Once you've applied we'll invite you in for a short interview to talk through your course choices and options. When everyone's happy you will get your course offer and entry requirements.



ACCEPT YOUR COURSE OFFER

You will be given the course entry requirements and offered a conditional place at the college. Following your interview, the details of your offer will be sent to you by email.



WE'LL BE KEEPING IN TOUCH

In early summer, we will email to check you are still happy with your course choices and to provide more information about the start of term, bus passes and bursaries.



LET US KNOW YOUR GCSE RESULTS

In later summer, you will receive information on how to let us know your GCSE results and confirm your place online on GCSE results day.



ATTEND YOUR ENROLMENT & START COLLEGE

You will be given a date for enrolment and induction that takes place at the start of term in September. We look forward to welcoming you!



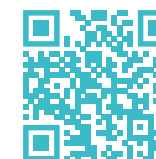
OPEN EVENTS

DISCOVER WHY WE ARE OUTSTANDING AT ONE OF OUR OPEN EVENTS.

OPEN DAY - **SATURDAY 15 NOVEMBER 2025** 10AM - 3PM

OPEN MORNING - **SATURDAY 24 JANUARY 2026** 10AM - 1PM

All dates and times correct at the time of publication.

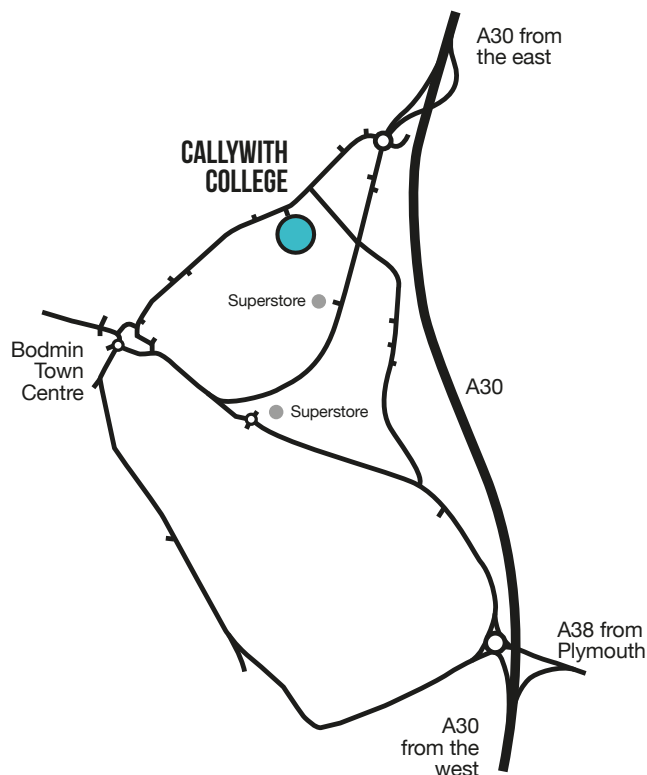


We look forward to sharing our college with you.

Find out more and register online:
callywith.ac.uk/open-events

HOW TO GET TO CALLYWITH COLLEGE

Callywith College, Old Callywith Road, Bodmin, Cornwall PL31 2GT



GET IN TOUCH

Call us
01208 224000

Visit us
callywith.ac.uk

Email us
enquiry@callywith.ac.uk

Find us on social



All open event dates and times correct at the time of publication.

Correct at time of print. Prospective students should check with the college for up-to-date information. This document is a guide for students and parents. It is not intended to create any contractual relationship. Courses and other details may be modified if necessary. Programmes of study leading to a qualification are subject to the approval and regulations of awarding bodies.

Many thanks to all our students, past and present, who appear in this prospectus.

OPEN EVENTS

We look forward to sharing our college with you. See our fantastic facilities, learn more about our courses and discover the exciting opportunities available at Callywith College.

OPEN DAY - **SATURDAY 15 NOVEMBER 2025** 10AM - 3PM

OPEN MORNING - **SATURDAY 24 JANUARY 2026** 10AM - 1PM

If you require this document in any other format please contact Callywith College on 01208 224000.



In association
with Truro &
Penwith College



Investors
in Diversity
Silver UK

Until
April
2027